



# SemaConnect Cable Management System (CMS) Installation Guide

1 — Last update: 04/12/2023

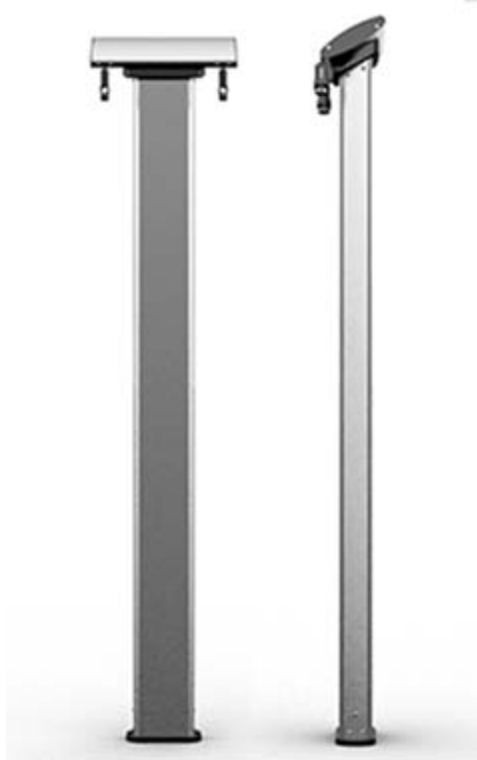
Installation Manuals

# Table of Contents

- 1. SemaConnect Cable Management: Series 6, 7, 8 EV Charging Stations ..... 3
  - 1.1. Safety and Compliance ..... 4
  - 1.2. SemaConnect Cable Management System Key Dimensions ..... 5
  - 1.3. SemaConnect Cable Management System parts (Pedestal Mount) ..... 6
    - 1.3.1. Parts List ..... 7
    - 1.3.2. SemaConnect Cable Management System Installation (with Pedestal) ..... 8
      - 1.3.2.1. Mounting CMS onto anchor plate ..... 9
      - 1.3.2.2. Preparing the clamp ..... 10
      - 1.3.2.3. Assembling CMS clamps ..... 11
      - 1.3.2.4. Tightening anchor bolts ..... 12
      - 1.3.2.5. Attaching the J1772 Cable ..... 13
      - 1.3.2.6. Removing Retention Bolt ..... 14
  - 1.4. SemaConnect Cable Management System Parts (Wall Mount)..... 15
    - 1.4.1. Parts List ..... 16
    - 1.4.2. Wall Mount Installation ..... 18
      - 1.4.2.1. Wall Mount Installation continued. .... 20

# 1. SemaConnect Cable Management: Series 6, 7, 8 EV Charging Stations

---



# 1.1. Safety and Compliance

---

## Safety and Compliance

This document provides instructions to install the SemaConnect™ Cable Management system (CMS) and should not be used for any other product. Consult a licensed contractor before installation to ensure compliance with the local building practices, climate conditions, safety standards, and state and local codes. Under no circumstances will compliance with the information in this guide relieve the installer of responsibility to comply with all applicable codes and safety standards.

This document describes the most common installation and mounting method. Contact SemaConnect where it is not possible to perform an installation using the procedures provided in this document. SemaConnect is not responsible for damages that may occur during or as a result of installation.

IN NO EVENT SHALL SEMACONNECT, INC, OR ITS AUTHORIZED DISTRIBUTORS BE LIABLE FOR ANY INDIRECT, INCIDENTAL, SPECIAL, PUNITIVE, OR CONSEQUENTIAL DAMAGES, INCLUDING WITHOUT ANY LIMITATION, LOST PROFITS, LOST DATA, LOST OF USE, COST OF COVER, OR LOSS OR DAMAGE TO THE SEMACONNECT™ CABLE MANAGEMENT SYSTEM ARISING OUT OF OR RELATING TO THE USE OR INABILITY TO USE THIS GUIDE, EVEN IF SEMACONNECT, INC OR ITS AUTHORIZED DISTRIBUTORS HAVE BEEN ADVISED OF THE POSSIBILITY OF SUCH DAMAGES.

SemaConnect™ Cable Management System is a trademark of SemaConnect, Inc. All other products or services mentioned are the trademarks, service marks, registered trademarks or registered services marks of their owners.

This material is protected by the copyright laws of the United States and other countries. It may not be modified, reproduced or distributed without the prior, express written consent of SemaConnect, Inc.

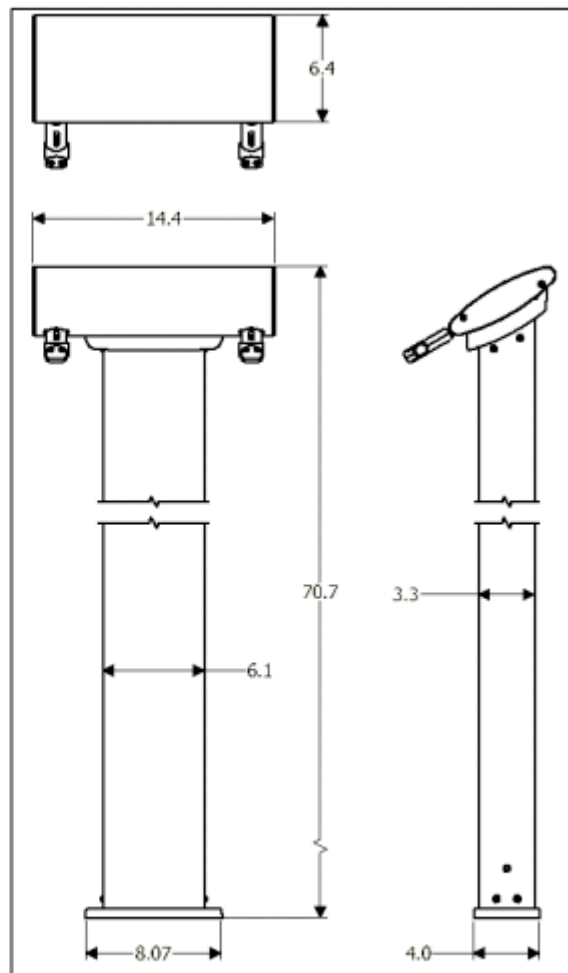
\*Copyright ©2015 SemaConnect, Inc. All rights reserved \*

# 1.2. SemaConnect Cable Management System Key Dimensions

Single Station Configuration



Dual Station Configuration



All Dimensions are in inches

## Technical Specs:

- Exterior is painted and seal coated. Material is aluminum, manufactured for long-term durability and service.
- Installed on Existing parking surface using two (2) anchor bolts at the base. Two (2) stabilizing straps are provided for vertical stability.
- Easily installed at existing station locations.

## Ordering Requirements:

- Specify single or dual configuration at time of placing order.

## **1.3. SemaConnect Cable Management System parts (Pedestal Mount)**

---

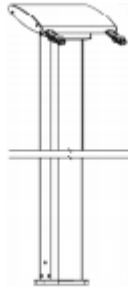
## 1.3.1. Parts List

---

Head Unit with J1772 Cable (20ft)

CMS Single Pedestal (1)

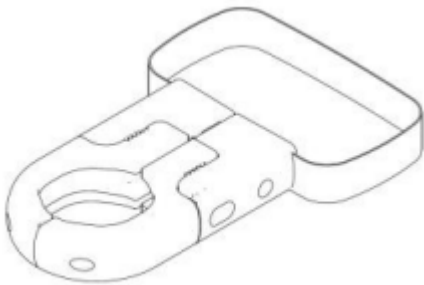
CMS Dual Pedestal (1)



CMS Clamp

CMS Single Pedestal (1)

CMS Dual Pedestal (2)



Anchor Bolts (M6×30mm – Socket screw)

## **1.3.2. SemaConnect Cable Management System Installation (with Pedestal)**

---



## 1.3.2.1. Mounting CMS onto anchor plate

---

### 1. Mounting CMS onto anchor plate

Place CMS base over the Anchor plate and secure the base with the help of anchor bolts. \*DO NOT FULLY TIGHTEN\*

Tool Used: – 5mm Allen Keys

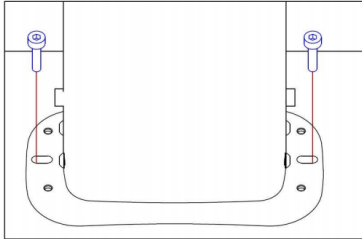


Figure 1: - CMS mounting to anchor plate

## 1.3.2.2. Preparing the clamp

---

### 2. Preparing the clamp

Remove two screws from the clamp from the locations shown in figure- 2.

Tools used: – 3mm and 5mm Allen Keys

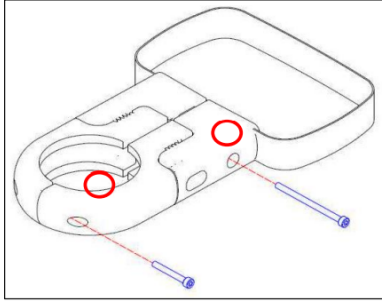


Figure 2: - Screws Locations

## 1.3.2.3. Assembling CMS clamps

### Assembling CMS clamps

Once the screws are removed, insert the clamp from rear side of the CMS (Figure 3). For mounting location see figure 5. To adjust the length of the clamp, loosen the two screws in the clamp (see figure 4 for screw location)

Tools used: – 5mm Allen Key



Figure 3:- Clamp Mounting

Once the length is adjusted tighten the screws fully.

Tools used: – 5mm Allen Key

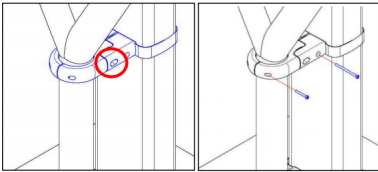


Figure 4:- Screws locations

Tighten the clamp with the help of two screws you removed in Step-2.

Tools used: – 3mm and 5mm Allen Keys

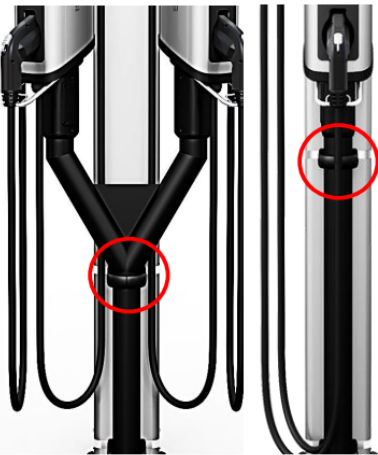


Figure 5:- Clamp mounting location

Note: Same Procedure for single pedestal

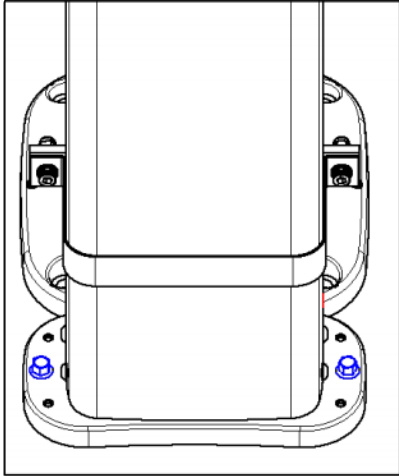
## 1.3.2.4. Tightening anchor bolts

---

### 4. Tightening anchor bolts

Tighten the anchor bolts fully

Tool Used: 5mm Allen Keys



*Figure 6: - CMS Anchor bolts*

## 1.3.2.5. Attaching the J1772 Cable

### 5. Attaching the J1772 Cable

- a) Unscrew three bolts from the J1772 holder (Figure-7).
- b) Dock the J1772 coupler in the J1772 holder area in the station (Figure-8).
- c) With charger plug secured in the storage holster, raise center of charger cable up to the clamp, ensuring none of the cable is touching the ground. Center the clamp at the upper-most loop in the cable.
- d) Secure the cable with the three screws removed in “step-a”.

Tools Used: 3mm Allen Key

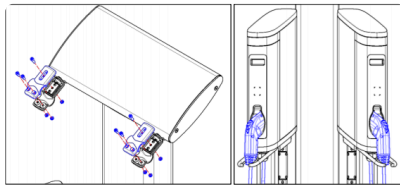


Figure 7: - Removing J1772 holder upper half

Figure 8: - J1772 docking location

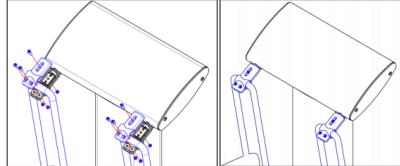


Figure 9: - Assembling J1772 cable and CMS

## 1.3.2.6. Removing Retention Bolt

---

### 6. Removing Retention Bolt

Remove Counter Weight retention bolt.

Tool required: – 5mm Allen Key

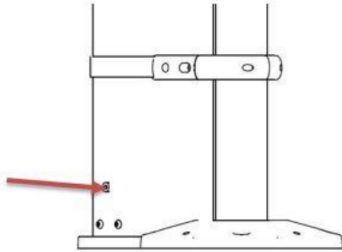


Figure 14:- Retention bolt location (On both sides)

Test for smooth cable movement.



## 1.4. SemaConnect Cable Management System Parts (Wall Mount)

---

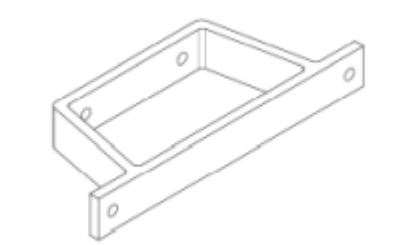
## 1.4.1. Parts List

---

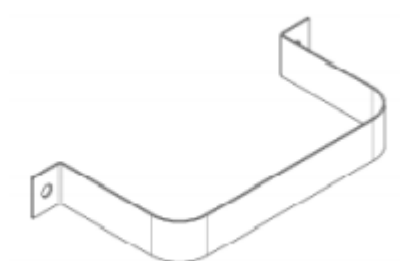
Head Unit with J1772 Cable 20ft (1)



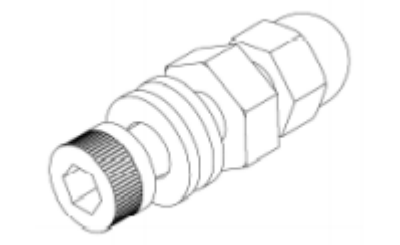
Spacer – Single Pedestal Install (2)



Stainless steel belt (2)

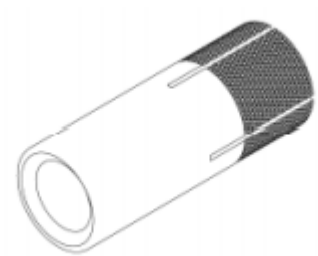


Stainless steel assembly bolt (4)

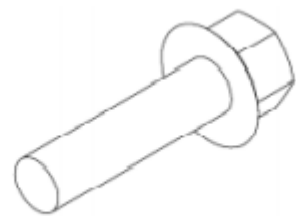




Drop-in Anchor (2)



Anchor Bolts (2)



Anchor setting tool (1)



## 1.4.2. Wall Mount Installation

### 1. Mount spacers to the wall

Mount the spacer to the wall, approximately to the specified height. (Ensure CMS is level to wall.)

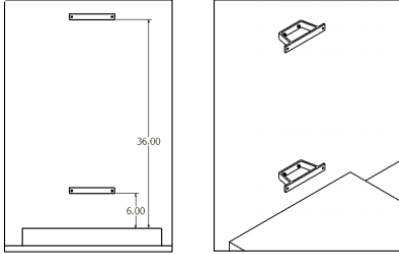


Figure 14: - Spacer mounting direction and location

### 2. Marking Drill Holes

Temporarily position the CMS flush against the wall to mark the anchoring points on the concrete.

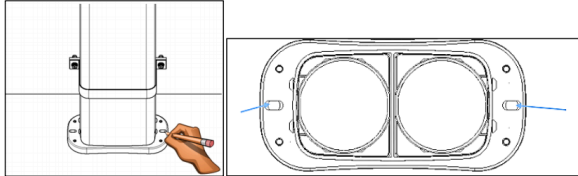


Figure 15: - Drilling marking points

### Installing Drop-in Anchors

Set aside the CMS to install the Anchors as illustrated below.

- If using a 1/4" anchor, drill a 3/8" hole; if using a 3/8" anchor, drill a 1/2" hole
- Insert anchor inside the hole. Hit it with the hammer until the anchor is plumb with the ground.
- With the help of setting tool set the anchor, by placing setting tool in the anchor and hammering it.

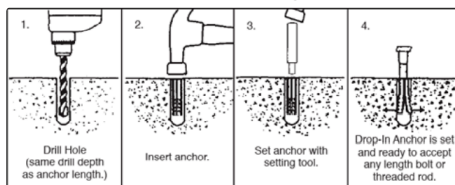
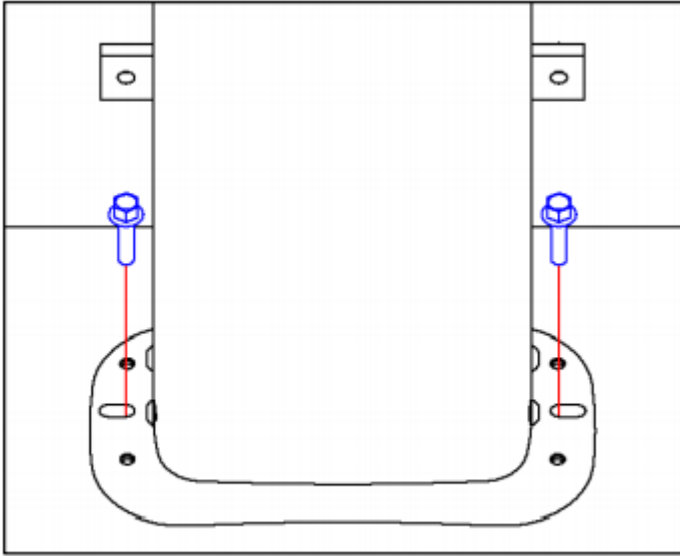


Figure 16: - Drop-in anchor installing procedure

## 4. Mounting CMS to Ground



*Figure 19: - CMS mounting to anchor plate bolt location*

## 1.4.2.1. Wall Mount Installation continued.

### 5. Securing CMS to spacer with Stainless Steel Spacer Bracket

With the help of stainless steel Spacer Bracket secure CMS to spacer.

Tools Required: 5mm Allen Key, Plyer

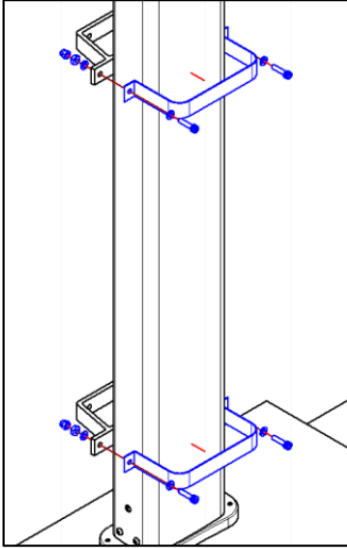


Figure 20: - Assembling SS Spacer belt

### 6. Attaching the J1772 cable

1. Unscrew three bolts from the J1772 holder
2. Dock the J1772 coupler in the J1772 holder area in the station
3. With charger plug secured in the storage holster, raise center of charger cable up to the clamp, ensuring none of the cable is touching the ground. Center the clamp at the upper-most loop in the cable.
4. Secure the clamp with the three screws removed in step-1.

Tools Used: 3mm Allen Key

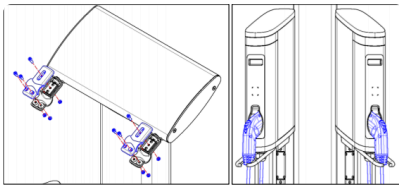


Figure 7: - Removing J1772 holder upper half

Figure 8: - J1772 docking location

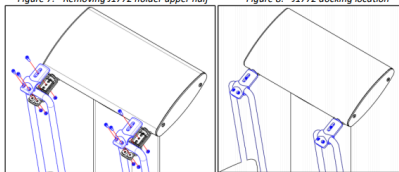


Figure 9: - Assembling J1772 cable and CMS

### 7. Removing Retention Bolt

Remove Counter Weight retention bolt.

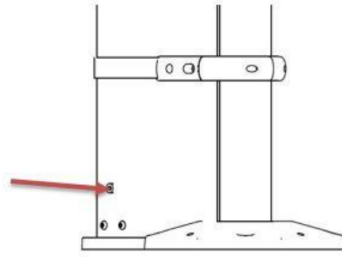


Figure 14:- Retention bolt location (On both sides)

Tool required: 5mm Allen Key

Test cable for smooth movement.

