

Osiris Manuals

Latest — Last update: Jan 29, 2024

Projective Technology GmbH

Table of Contents

1. Welcome to Osiris 2!	3
1.1. Osiris Changelog	3
2. Osiris 2 for macOS	4
2.1. System Requirements	4
2.2. Installation	4
2.3. Machine ID & Activation	9
2.4. Usage	10
2.5. Troubleshooting & Tips	15
2.5.1. Avid Media Composer: Exception caught in APlayer::Play – Exception:	
DISK_TOO_MANY_OPEN	15
2.5.2. Avid Media Composer: File Locations	16
2.5.3. Avid Media Composer: Project is locked for write	17
2.5.4. Bin Locking does not work	17
2.5.5. Bulk-Deploying Osiris	19
2.5.6. macOS: Allow Blocked System Extensions	20
3. Osiris 2 for Windows	21
3.1. System Requirements	21
3.2. Installation	21
3.3. Machine ID & Activation	22
3.4. Usage	22
3.5. Troubleshooting & Tips	23
3.5.1. Adding Osiris to Windows all users startup	23
3.5.2. Important Files & License Information	24
3.5.3. Updating Osiris 2	25
3.5.4. Upgrading from Legacy Osiris to Osiris 2	25
3.5.5. Uninstalling Osiris 2	27
4. Legacy Osiris Manuals	28
4.1. Legacy Osiris for MacOS	28
4.1.1. Osiris Changelog (macOS)	28
4.1.2. Workstation Preparation	31
4.1.3. Installation	31
4.1.3.1. Apple Silicon: Allow user management of kernel extensions from identified	
developers	38
4.1.4. Usage	42
4.1.5. Machine IDs and Activation	47
4.1.6. Adjusting the Osiris “block size” and “IO size”	50

1. Welcome to Osiris 2!

Introduction

Welcome to the official Projective Osiris manuals. Osiris is a lightweight client software that enables Avid™ editors to collaborate on Media Composer projects simultaneously. It provides Avid-style bin locking for Windows & macOS clients and on nearly any storage system, including LucidLink! To get started, please select your operating system from the below list.

Contents

- [Osiris 2 Changelog](#)
- [Osiris 2 for macOS](#)
- [Osiris 2 for Windows](#)

1.1. Osiris Changelog

Osiris for Windows v2.0.1, 30.11.2023

=====

- The official Osiris 2 production build for Windows has been released.

Osiris for Windows v2.0.0, 05.10.2023

=====

- This is a test build!
- Rewritten from scratch.
- Support for [LucidLink](#) filespace.
- New licensing scheme.

2. Osiris 2 for macOS

Welcome to Osiris 2 for macOS. The following chapters describe how to install and configure Osiris 2 for macOS.

Contents

- [System Requirements](#)
- [Installation](#)
- [Machine ID & Activation](#)
- [Usage](#)
- [Troubleshooting & Tips](#)

2.1. System Requirements

macOS Compatibility

Osiris 2 supports macOS 11, 12, 13 & 14.

Media Composer and Third-Party Bin Locking Compatibility

- Bin locking and project sharing are supported with [Media Composer Ultimate & Enterprise editions](#) only! Make sure that you are running one of these editions.
- Osiris **does not** work alongside other bin-locking solutions, such as Avid Nexis, Mimiq, SAN Fusion, DDP, etc. Please make sure to uninstall respective clients and drivers before installing Osiris.

Storage Compatibility

Osiris works with all types NAS & SAN storages as well as with LucidLink filespaces.

2.2. Installation

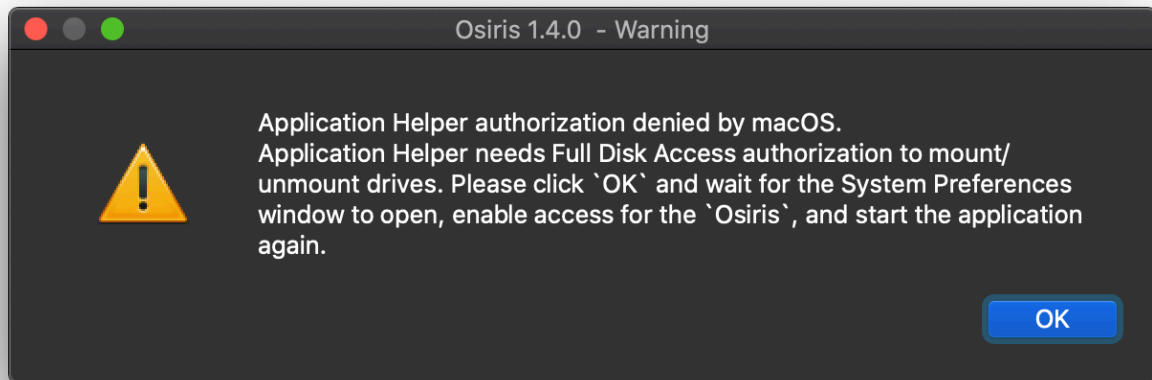
Note to Apple Silicon Users

To install Osiris 2 on Apple Silicon hardware, you first need to Allow user management of kernel extensions from identified developers. The [related manual chapter](#) will guide you through that process.

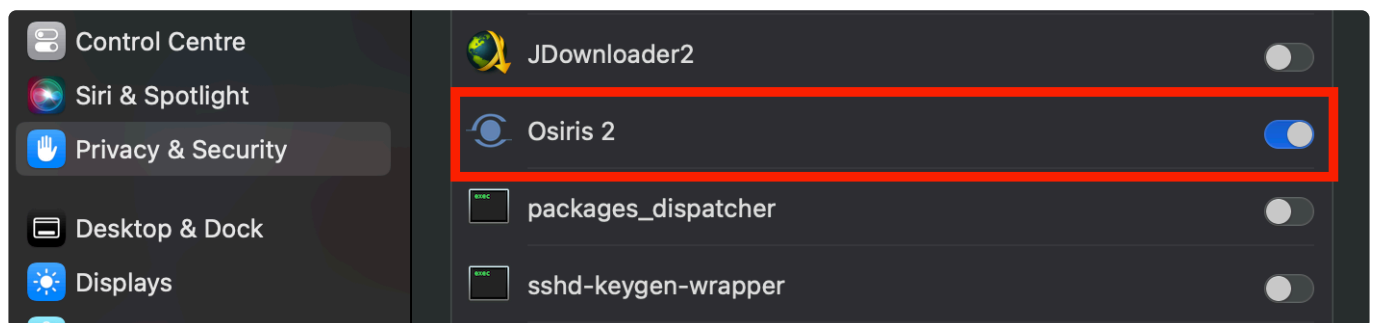
Installation

1. [Download the latest Osiris 2 version](#) for macOS.
2. Run the .pkg installer.
3. Follow the installation instructions.

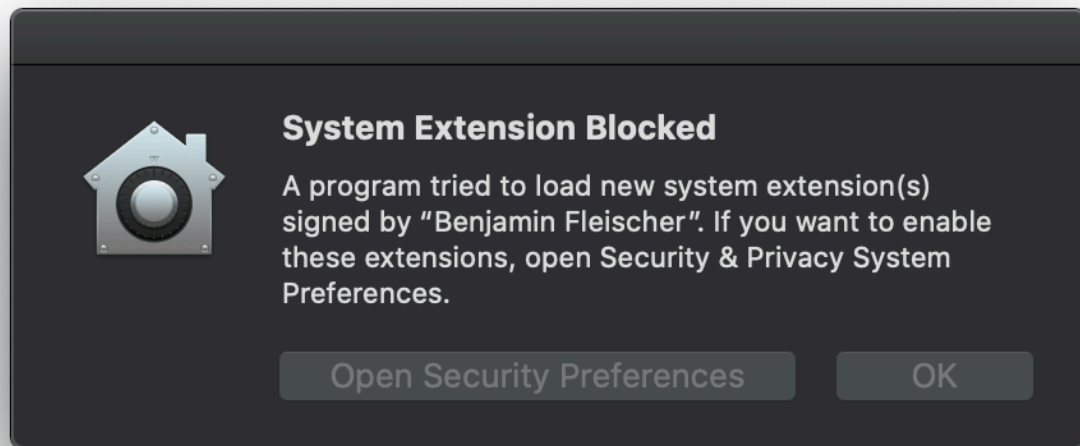
4. Start Osiris 2 via Spotlight search or the macOS “Applications” folder.
5. On the first launch, you will see this message:



6. Click OK and wait for the “System Preferences” window to open.
7. Now click `Full Disk Access` and unlock the settings by clicking the toggle button next to Osiris 2.

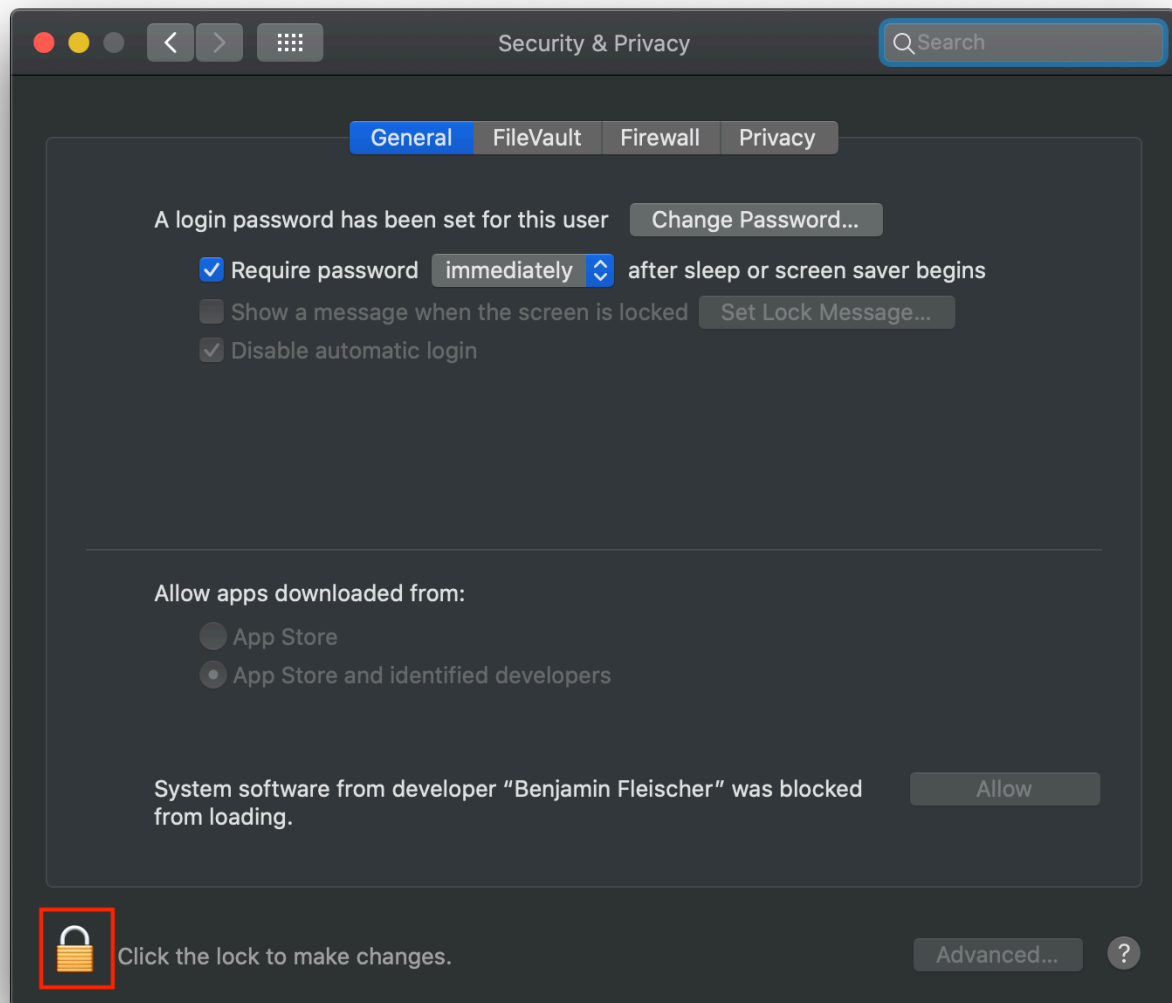


8. Start Osiris again. If you still see the message “Application Helper Authorization denied by macOS”, check the troubleshooting section at the bottom of this page.
10. Once you have created your first Osiris mount and attempted to mount it, you will see the following messages. It might be that you see two different messages for the same thing, but please focus on the message as shown here:

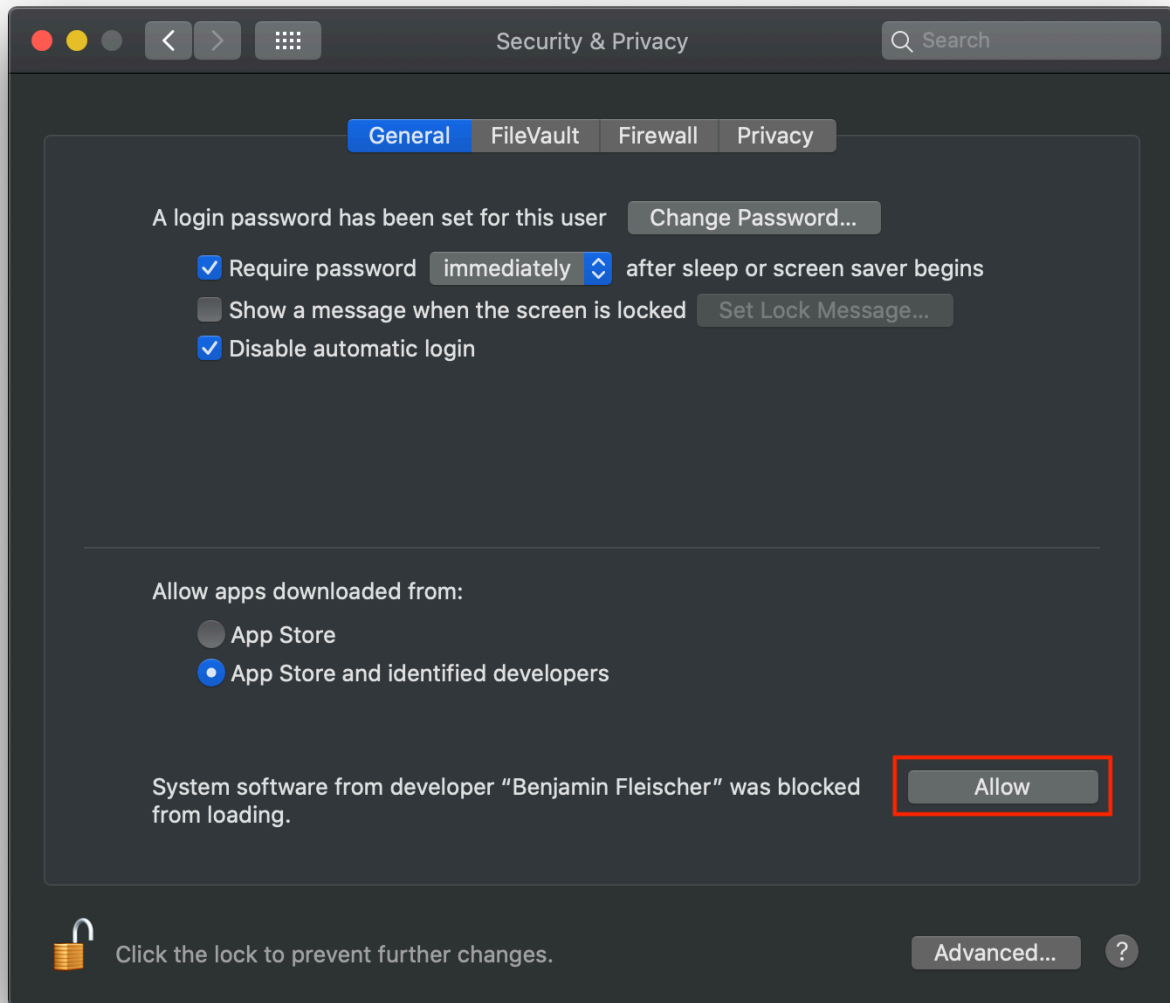


11. Click on "Open Security Preferences"

12. Once the "Security Preferences" window opens, click on the lock in the lower-left corner to unlock the settings.



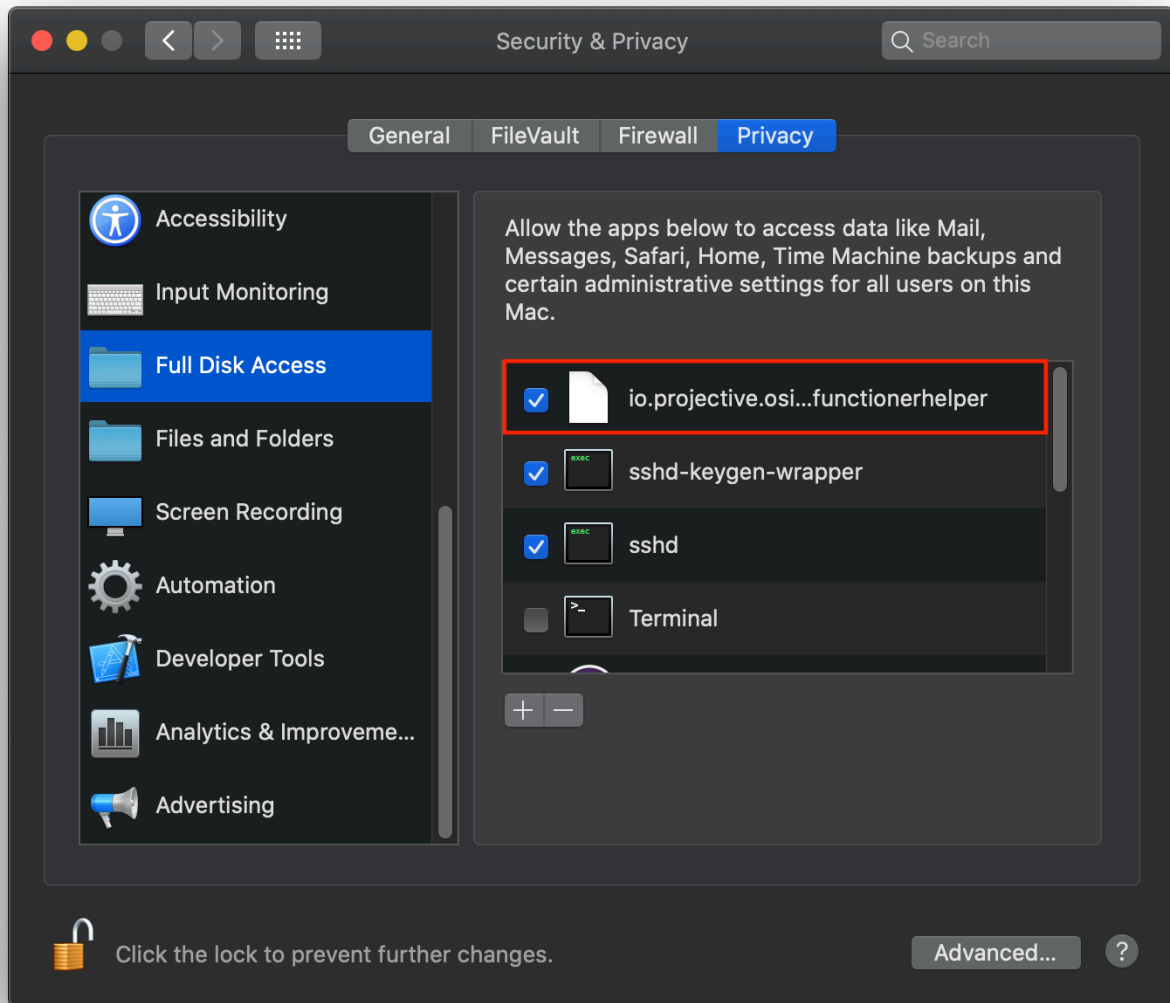
13. Once the settings are unlocked, click on the "Allow" button next to the message "System software from developer "Benjamin Fleischer" was blocked from loading".



Troubleshooting

I have granted Osiris "Full Disk Access" but I still see the message "Application Helper Authorization denied by macOS".

1. Go to "System Preferences" → "Privacy" and click on "Full Disk Access"
2. Check the box next to the entry "io.projective.osiris.continuumtransfunctionerhelper"

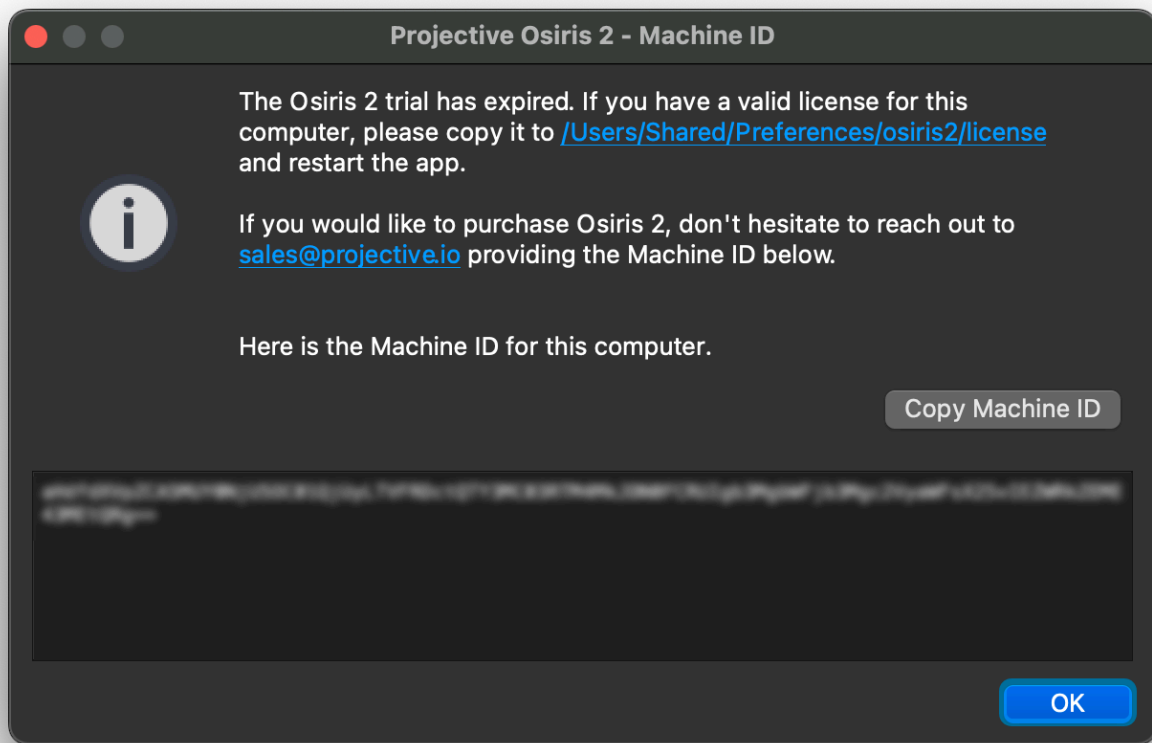


3. Start Osiris again

2.3. Machine ID & Activation

Getting the Machine ID

1. Upon startup, Osiris 2 will check whether a valid license exists. If no valid license is present, you will see the following message:



2. Copy the Machine ID and save it. Also, note the name of the Computer to which the Machine ID belongs, as you will need that info later for the activation. Computer names are typically something like `edit1` or `Mikes Laptop`. It is a name that you come up with!

3. Repeat steps 1 – 6 for all the Computers you want to license Osiris.

4. Put the Machine IDs and computer names in a spreadsheet and send it to support@projective.io. Our support will then provide you with a `.zip` file that contains all the licenses.

5. Once you have a valid license, please continue with the Activation chapter below.

Activation

1. Make sure Avid Media Composer is closed.

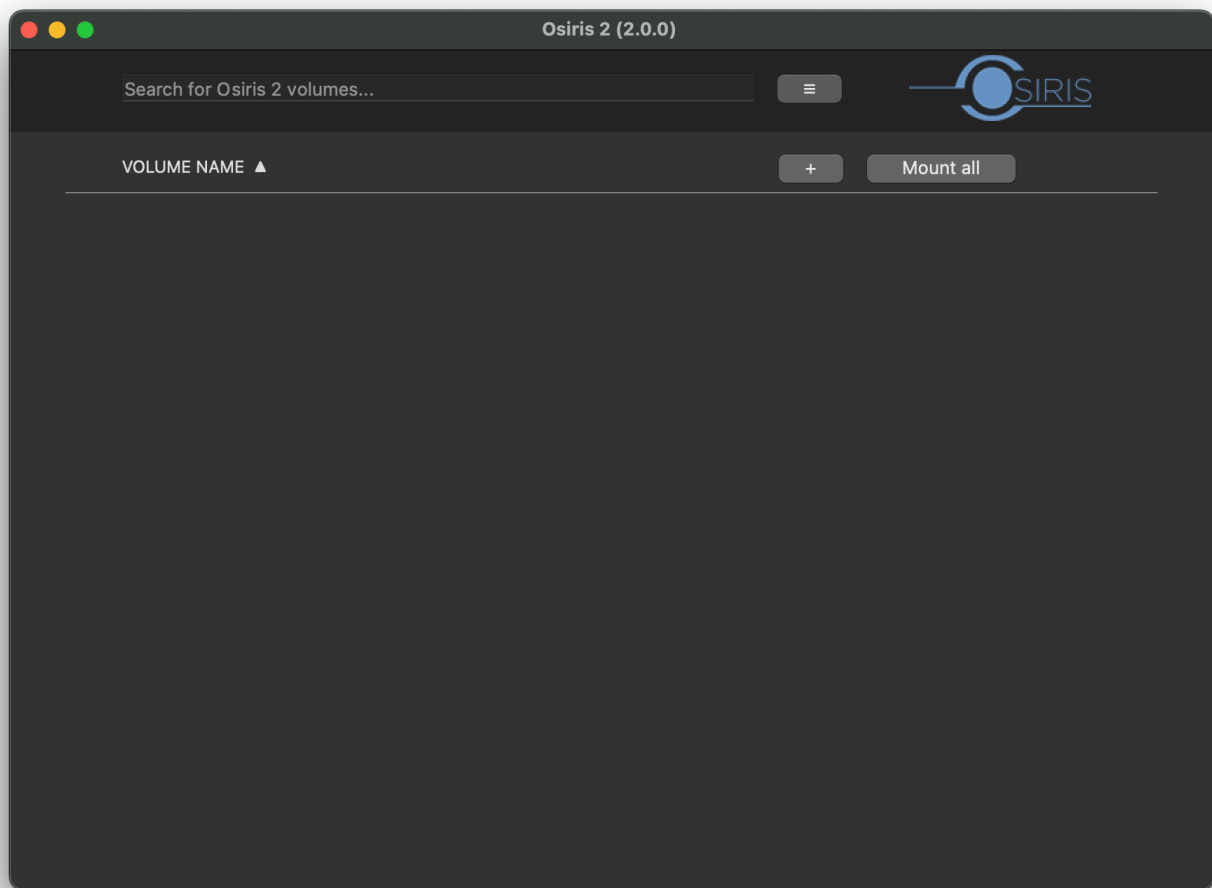
2. Copy the license file for the Computer to `/Users/Shared/Preferences/osiris2/license`.

Repeat this step for each licensed system. Each license file has the name of the Computer it belongs to in its filename.

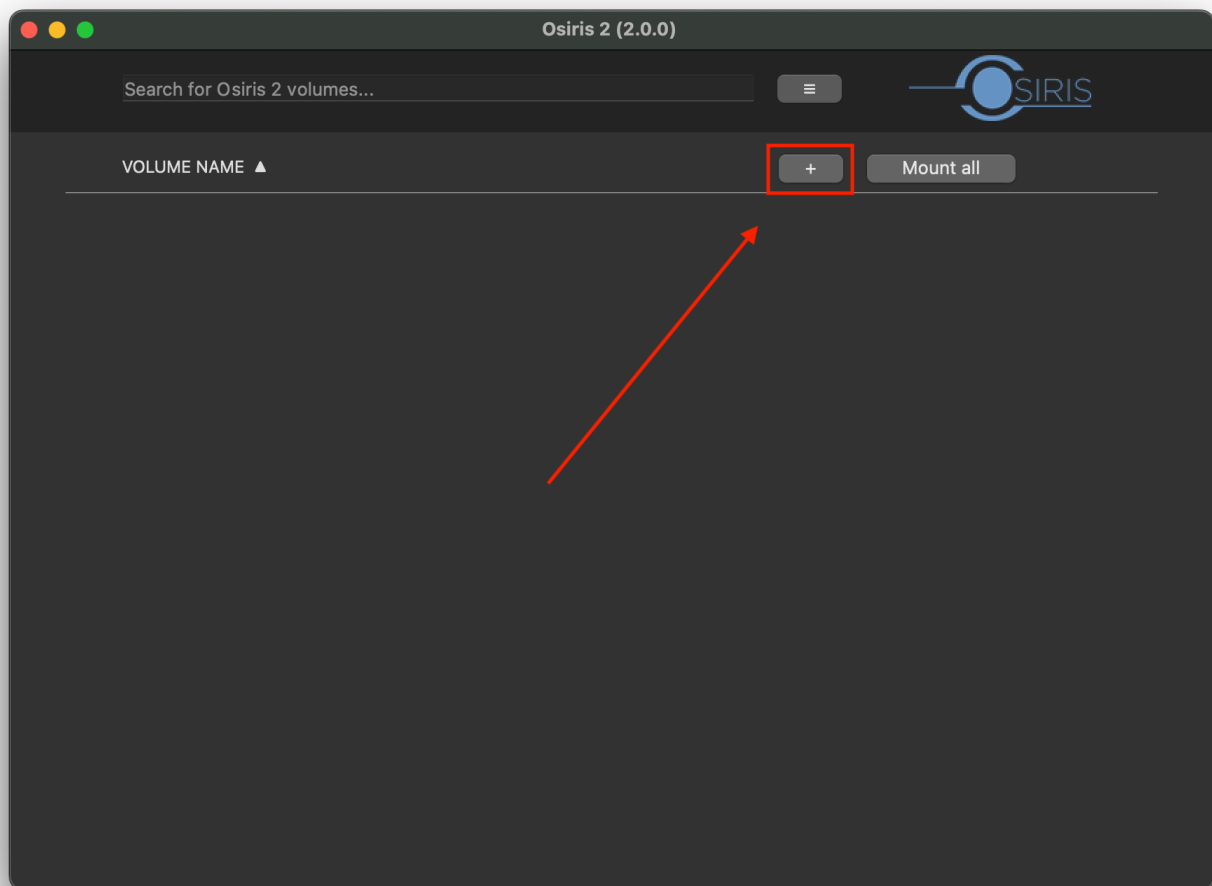
3. Proceed with the usage chapter.

2.4. Usage

1. Start Osiris



2. to create you first Osiris volume click on the + or drag and drop a folder from Finder into the Osiris 2 window.

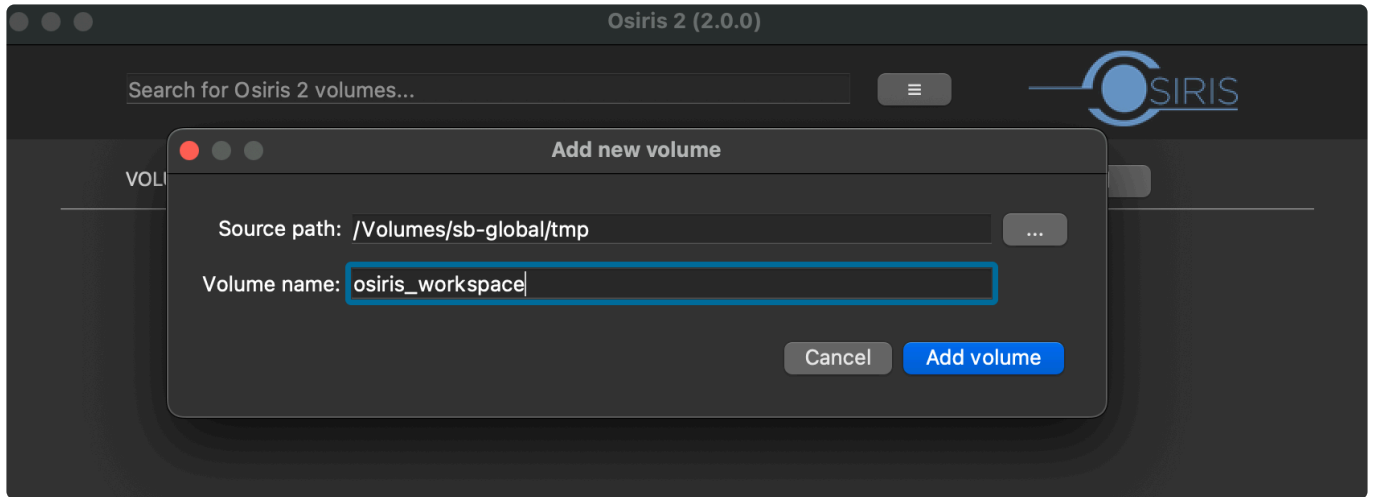


3. Click on the “...” button next to “Source path” and navigate to the network location that you would like to mount as an Osiris volume

* Osiris allows you to create multiple volumes. You may create an Osiris volume for each of your Avid projects, a workspace for multiple Avid projects or even a mixture of both.

4. In the `Volume name` field, provide a name for your new Osiris volume (Please avoid spaces in volume names but use underscores instead)

5. Now click on the `Add Volume` button.

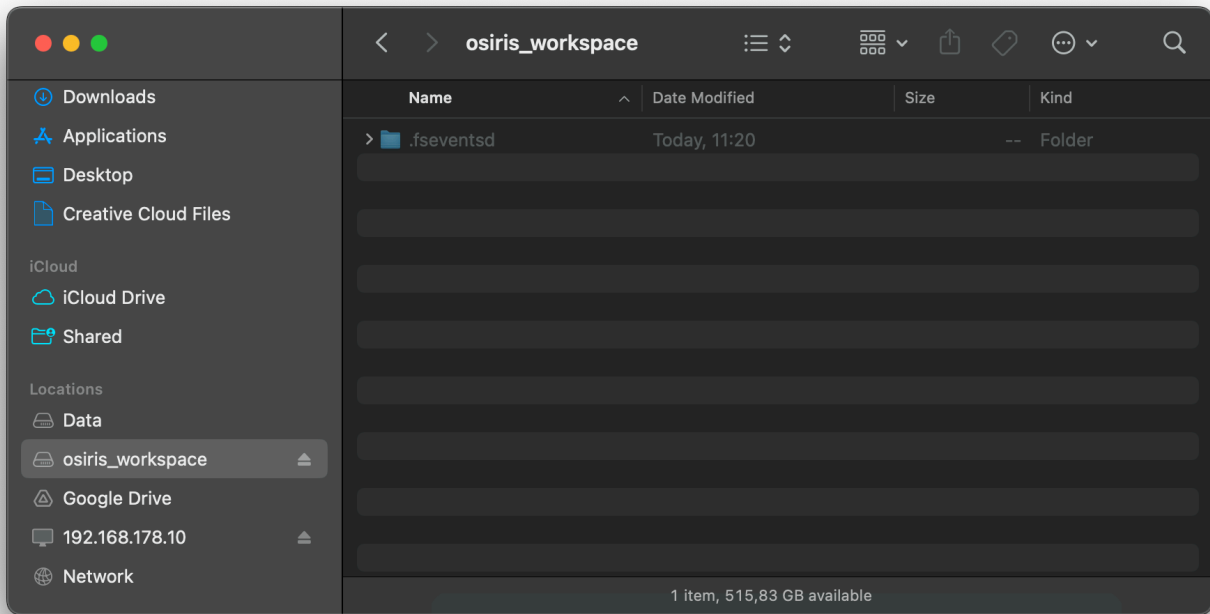


6. Repeat the steps 2 – 5 to create additional Osiris volumes.

7. Mount a volume by clicking on the “Mount” button next to its name or click on the “Mount all” button to mount all of your Osiris volumes. You can mount up to 20 Osiris volumes simultaneously.

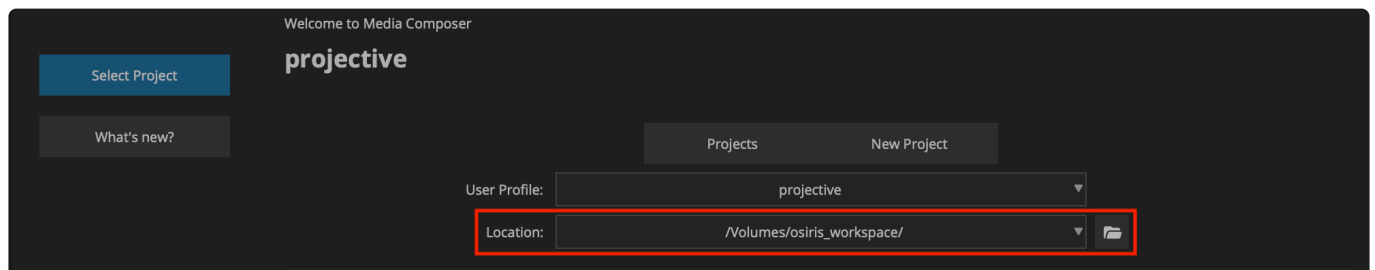


8. Your Osiris 2 volume will now appear in the macOS Finder.



9. Launch Avid Media Composer™.

10. In the `Select Project` window, navigate the Osiris volume that you would like to work on

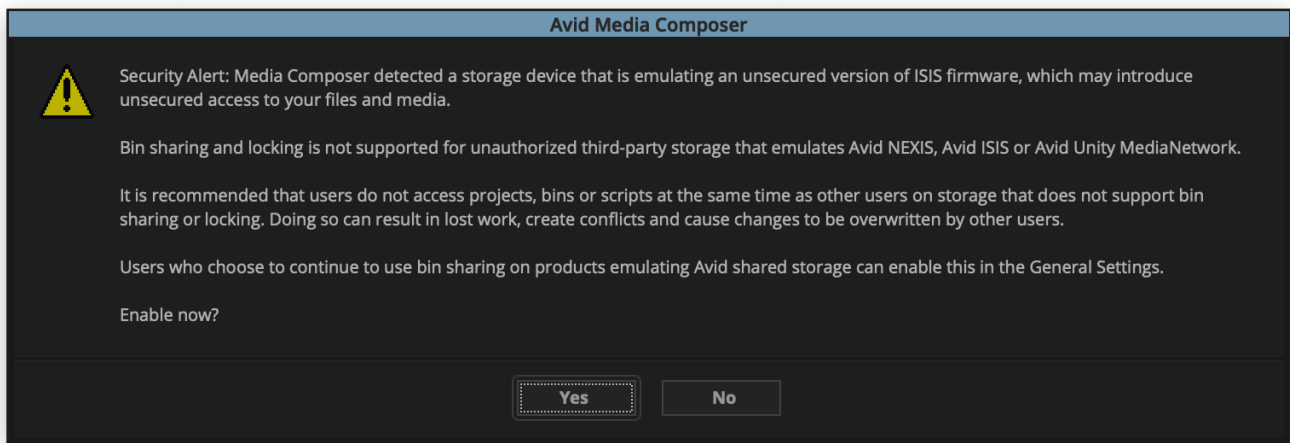


11. On the Osiris volume, create a new Avid project and open it

12. Avid will no prompt you with the following message. This is Avid's way of saying that third-party bin locking is enabled. Answer the question with `Yes`.



While this message may appear alarming, it really isn't. The user just needs to click `Yes`. The message emphasizes that Avid bears no responsibility for the performance and security of third-party shared storage products when used in conjunction with Media Composer, which is completely reasonable.



13. You are now in bin locking mode. If you would like multiple people to open the same project on another editing workstation, install Osiris there and repeat the above steps 1-4. **Make sure that the shared Osiris volumes have the same names and paths on all your editing workstations!**

2.5. Troubleshooting & Tips

Contents

- [Avid Media Composer: File Locations](#)
- [Bin Locking does not work](#)
- [Avid Media Composer: Exception caught in APlayer::Play – Exception: DISK_TOO_MANY_OPEN](#)
- [Avid Media Composer: Project is locked for write](#)
- [macOS: Allow Blocked System Extensions](#)

2.5.1. Avid Media Composer: Exception caught in APlayer::Play – Exception: DISK_TOO_MANY_OPEN

Problem

During playback or export of a sequence, Avid Media Composer aborts the operation with the error `Exception caught in APlayer::Play – Exception: DISK_TOO_MANY_OPEN, filename: XXX_filename.mxf`.

Cause

Presumably, this error is caused when Media Composer attempts to open (access) more files than the `maxfiles` soft limit set in macOS. Numerous people reported this error, and we have observed it when using a Filesystem in Userspace (FUSE) in combination with external hard drives. This error, however,

can also happen when using Media Composer with internal hard drives or on a shared storage.

Solution

Please use the solution path [as provided by Avid in their knowledge base](#).

2.5.2. Avid Media Composer: File Locations

DEFAULT PROJECT FILE LOCATIONS

Windows

```
C:\Program Files\Avid\Avid Media Composer\Avid Projects\name of your project
```

macOS

```
MacHD/Users/Shared/Avid Media Composer/Avid Projects/name of your project
```

DEFAULT AVID ATTIC LOCATIONS FOR LOCAL AND SYNCED PROJECTS

Windows XP

```
C:\Documents and Settings\All Users\Shared Documents\Avid editing application\  
Avid Attic
```

Windows Vista, 7,8 & 10

```
C:\Users\Public\Public Documents\Avid editing application\Avid Attic
```

macOS

```
Macintosh HD/Users/Shared/Avid editing application/Avid Attic
```

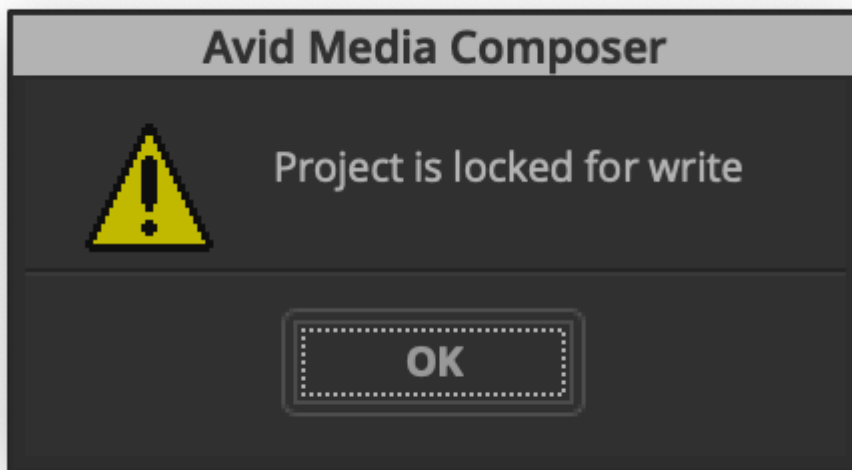
DEFAULT AVID ATTIC LOCATIONS FOR SHARED PROJECTS ON AVID UNITY/ISIS

Unity Attic folder is located at the root level of the Workspace in which the project is located.

2.5.3. Avid Media Composer: Project is locked for write

Introduction

This error appears when Media Composer 2022.4 attempts to open a project from a FUSE mount that emulates the Avid Nexis file system. As of May 2022, Avid has acknowledged this as a bug, and as of July 2022, this bug has been fixed in Media Composer version 2022.7.



Solution

The only way to prevent this error from happening is to not use Media Composer 2022.4 but an older or newer version of the software.

2.5.4. Bin Locking does not work

Preconditions

Apply the following steps when...

- You are using [Media Composer Ultimate or Media Composer Enterprise](#) , as only these editions support bin locking!
- The Osiris app can start.
- The Osiris app can mount an Osiris volume.
- The bin locking feature does not work in “Avid Media Composer”.

Introduction

The Osiris app may be able to mount Osiris volumes successfully but the bin-locking feature in Media Composer is not working. The most common reason for this are leftover third-party kernel extensions from other bin-locking solutions such as SAN Fusion, Nexis, etc. This manual chapter will teach you how to identify and remove these leftover Kernel extensions.

1. Check if the requirements for bin locking are met

1. Make sure that any third-party bin-locking tool except for Osiris is uninstalled.
2. Make sure the Osiris app is closed.
3. Make sure Avid Media Composer is closed.
4. Open a macOS Terminal.
5. In the Terminal, type `mount` and then press enter.
6. Look for a volume that includes both, **io.projective.osiris.pamloops@pamfs0** and **(AvidUnityISIS, local, nodev, noexec, nosuid, synchronous)** in its parameters.

```
//NAS@fritz.nas/FRITZ.NAS on /Volumes/FRITZ.NAS (smbfs, nodev, nosuid, mounted by marco)
io.projective.osiris.pamloops@pamfs0 on /Volumes/Test_Volume (AvidUnityISIS, local, nodev, noexec, nosuid, synchronous)
marco@MBP-von-Marco ~ %
```

If both **io.projective.osiris.pamloops@pamfs0** and **(AvidUnityISIS, local, nodev, noexec, nosuid, synchronous)** are in place, then Osiris bin locking is supposed to work properly. This means that the origin of the non-functioning bin locking likely is a leftover kernel extension from another bin locking tool. The next chapter will address how to identify and remove those kernel extensions.

2. Unloading third-party kernel extensions

Before deleting a kernel extension you should unload it to check whether Osiris works without it.

1. Make sure the Osiris app is closed.
2. Make sure Avid Media Composer is closed.
3. Make sure that any third-party bin-locking tool except for Osiris is uninstalled.
4. Open a macOS Terminal
5. Type `kextstat | grep -v com.apple` to load a list of third-party kernel extensions.
6. Look for kernel extensions that include the name of a previously installed bin-locking software such as Nexis, San Fusion, etc.
7. Once found, unload the kernel extension using either of the following methods. The old method might not work on newer macOS versions

- Old method: `sudo kextunload -b name.of.the.kext`
- New method: `sudo kmutil unload -b name.of.the.kext`

8. Start Osiris and mount a volume.
9. Start Avid and test bin locking again.

3. Deleting a kernel extension

Once you have identified the problematic kernel extension you may delete it.

1. First, you need to find the path in which the kernel extension is located.
2. Open a terminal and type `mdfind 'kMDItemKind == "Kernel Extension"'`
3. Identify the Kernel extension that you want to delete.
4. Type `sudo rm -rf /path/to/the/extension/some_kext.kext` and press enter to remove the kext.

4. Last resort

You must re-install macOS from scratch if you cannot resolve the bin-locking issue using the above steps.

2.5.5. Bulk-Deploying Osiris



By creating a template configuration file, you can bulk deploy Osiris 2 across your editing workstations. Once the config is in place, you can manually copy it to your Media Composer workstations or utilize a device management solution such as JamF. The shared storage must appear under the same name and path on all your editing workstations!

1. [Install and configure](#) on one of your workstations.
2. Close Osiris (This will save the configuration file).
2. Go to the Osiris configuration file location:

```
/MacOS_hddisk/Users/Shared/Preferences/osiris2/config"
```

3. Copy the file "osiris.json" to shared storage, a USB device, or a device management tool.
4. "Install Osiris on another editing workstation.
5. Close Osiris.
6. Copy or deploy the previously created configuration file from its current location to:

```
/MacOS_hddisk/Users/Shared/Preferences/osiris2/config"
```

7. Start Osiris to check the proper configuration.
8. Repeat steps 4-7 on all of your editing workstations.

2.5.6. macOS: Allow Blocked System Extensions



Because of macOS security policies, performing the following steps won't take effect if you are connecting to the macOS machine via Remote Desktop, or if the mouse/trackpad is emulated by a 3rd party application (MagicPrefs, BetterTouchTool, Synergy, etc.)

If you are having issues launching software because of blocked system extensions, please do the following:

- Open the affected app and wait for the “Extension Blocked” error to appear
- Open System Preference / Security & Privacy
- Under the General section, click on the padlock at the bottom left to make changes.
- Ensure App Store and identified developers option is selected under Allow apps downloaded from.
- Click the Allow button next to the prompt System software from developer “developer name” was blocked from loading” at the bottom of the Security & Privacy window.

3. Osiris 2 for Windows

Welcome to the Osiris 2 for Windows manuals!

This manual teaches you how to install, activate and use Osiris 2.

- [System Requirements](#)
- [Installation](#)
- [Activation](#)
- [Usage](#)
- [Troubleshooting & Tips](#)

3.1. System Requirements

Windows Compatibility

Osiris 2 supports Windows 10 & Windows 11.

Media Composer and Third-Party Bin Locking Compatibility

- Bin locking and project sharing are supported with [Media Composer Ultimate & Enterprise editions](#) only! Make sure that you are running one of these editions.
- Osiris **does not** work alongside other bin-locking solutions, such as Avid Nexis, Mimiq, SAN Fusion, DDP, etc. Please make sure to uninstall respective clients and drivers before installing Osiris.

Storage Compatibility

Osiris works with all types NAS & SAN storages as well as with LucidLink filespaces.

3.2. Installation

Prerequisite

The below steps are only applicable for first-time Osiris 2 installations. If you are running a legacy version of Osiris, please follow the [upgrading instructions to Osiris 2](#) chapter instead.

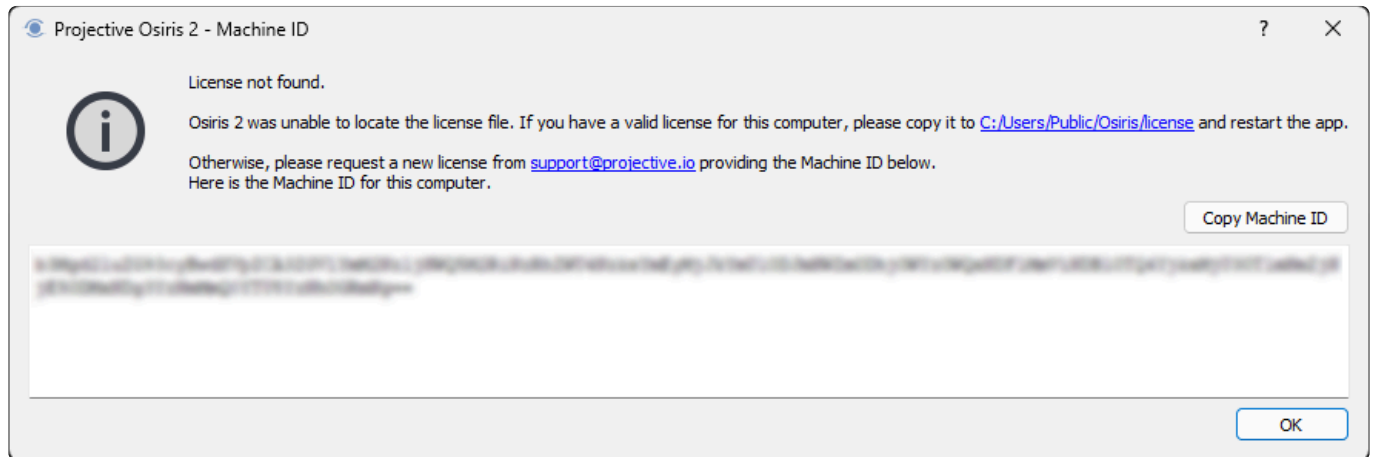
Installation

1. Download the latest Osiris 2 installer from the [Osiris download portal](#).
2. Double-click on the `osiris_2.x.x_setup.msi` file to start the installation process
3. Follow the on-screen installation instructions.
4. Once Osiris 2 has been installed, start the Osiris 2 application.
5. Proceed with the [Machine ID & Activation chapter](#).

3.3. Machine ID & Activation

Getting the Machine ID

1. Upon startup, Osiris 2 will check whether a valid license exists. If no valid license is present, you will see the following message:



2. Copy the Machine ID and save it. Also, note the name of the Computer to which the Machine ID belongs, as you will need that info later for the activation. Computer names are typically something like Edit1 or Mikes Laptop. It is a name that you come up with!
3. Repeat steps 1 – 6 for all the Computers you want to license Osiris.
4. Put the Machine IDs and computer names in a spreadsheet and send it to support@projective.io. Our support will then provide you with a .zip file that contains all the licenses.
5. Once you have a valid license, please continue with the Activation chapter below.

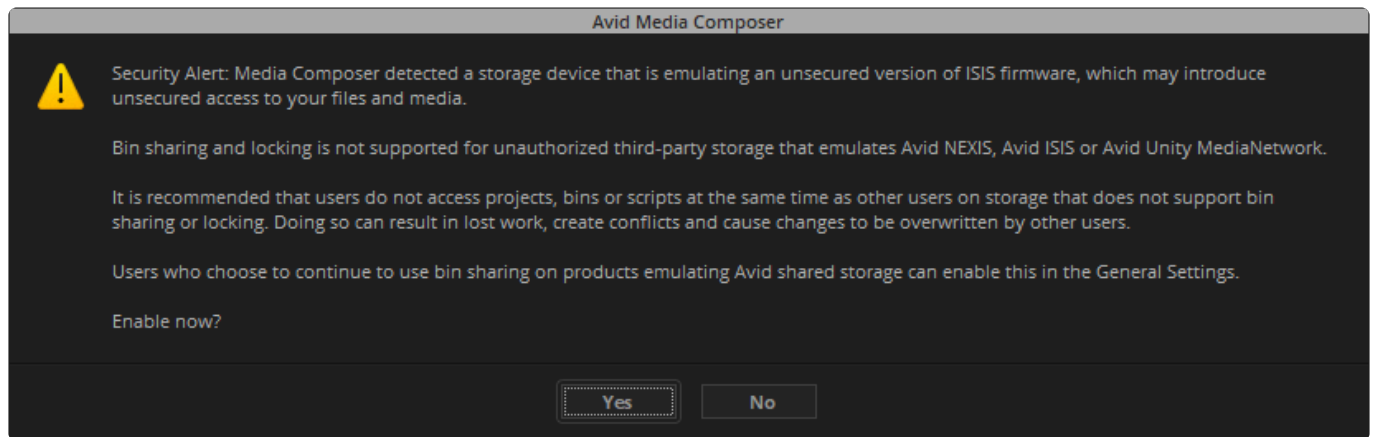
Activation

1. Make sure Avid Media Composer is closed.
2. Copy the license file for the Computer to C:\Users\Public\Osiris\license. Repeat this step for each licensed system. Each license file has the name of the Computer it belongs to in its filename.
3. Proceed with the [usage chapter](#) of this manual. If you are upgrading from legacy Osiris, please continue with #10 of the [upgrade chapter](#) instead.

3.4. Usage

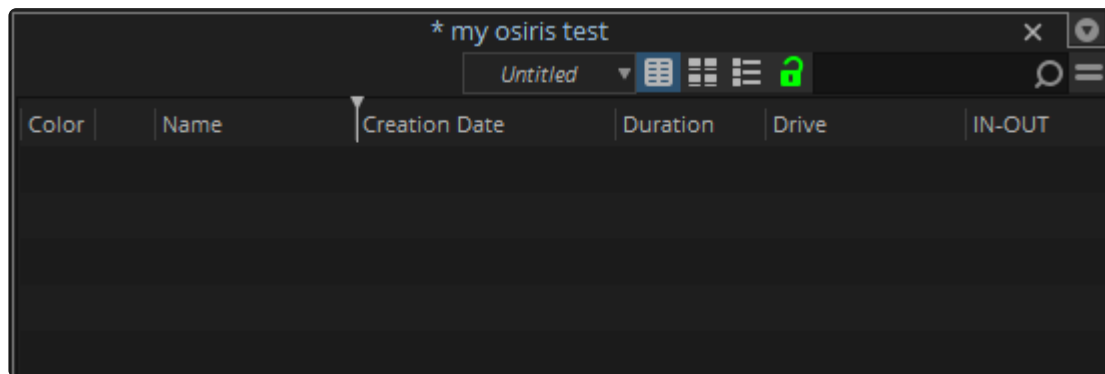
1. Always make sure to start Osiris 2 first, and then launch Media Composer. It is recommended to include Osiris in the [all users startup items](#) of your operating system so that the app always launches upon user login.
2. Start Osiris.
3. Once Osiris is running, open Media Composer.
4. Create a new Media Composer project on your network storage and open it.

5. You will encounter the following message. It may sound irritating, but it simply signifies Avid's confirmation that third-party bin locking is functioning correctly.



6. Click **Yes**. The message will not appear the next time you open that project.

7. Once the project is open, Media Composer will create a bin. This bin will have a green padlock icon, indicating that the bin is writable to you but read-only for other users who open the same project. These users will see a red padlock icon instead.



8. When importing media, make sure that your import location is a network drive or LucidLink filesystem.

3.5. Troubleshooting & Tips

- [Adding Osiris to Windows all users startup](#)
- [Important Files & License Information](#)
- [Updating Osiris 2](#)
- [Upgrading from Legacy Osiris to Osiris 2](#)
- [Uninstalling Osiris 2](#)

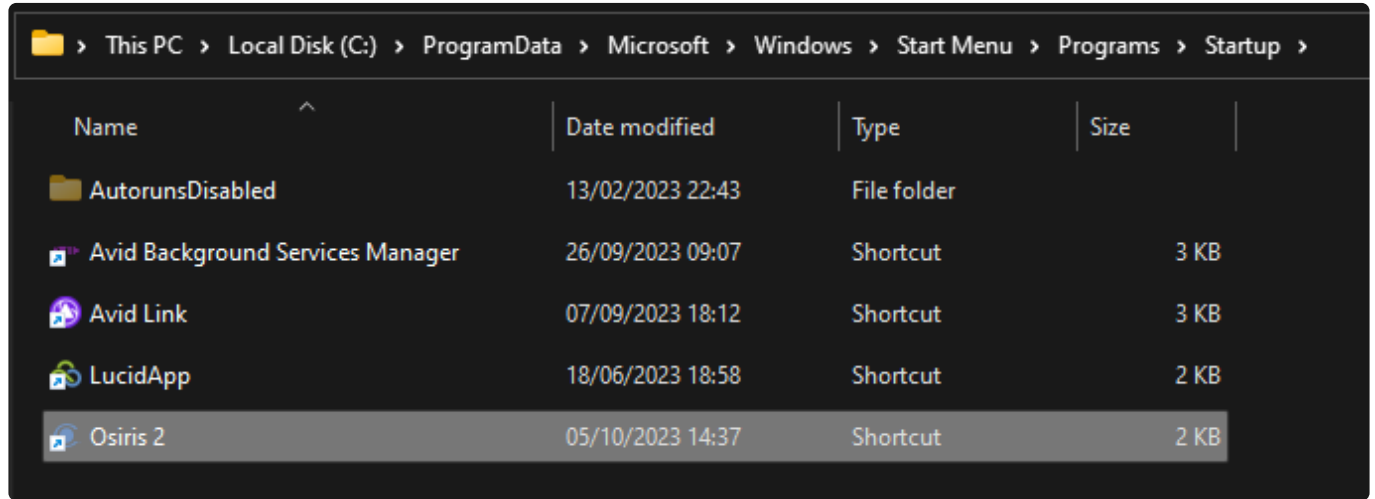
3.5.1. Adding Osiris to Windows all users startup

1. Open the Windows file explorer

2. Copy and paste the following path into the address bar or navigate there manually:

```
C:\ProgramData\Microsoft\Windows\Start Menu\Programs\Startup
```

3. Copy the Osiris 2 shortcut from the Windows desktop to the “Startup” folder



Once added to the startup folder, Osiris 2 will autostart for all Windows users.

3.5.2. Important Files & License Information

Log File Locations

Osiris 2 log files are stored in `C:\Users\Public\Osiris\logs`.

License File Locations

The Osiris 2 license file is stored in `C:\Users\Public\Osiris\license`. If more than one license file is present in this directory Osiris 2 will automatically use the latest one.

Version & License Information

You can access the version and license information as follows:

1. Right-click on the Osiris 2 tray icon in the Windows taskbar.
2. Click on `About Osiris` to display the screen with the Osiris 2 license information.

3.5.3. Updating Osiris 2

Prerequisite

The below steps are only applicable if you are already running Osiris 2. If you are running a legacy version of Osiris, please follow the [upgrading instructions to Osiris 2](#) chapter instead.

Update Process

1. Download the latest Osiris 2 installer from the [Osiris download portal](#).
2. Double-click on the `osiris_2.x.x_setup.msi` file to start the update process
3. Follow the on-screen installation instructions.
4. Once Osiris 2 has been updated, Start the Osiris 2 application.

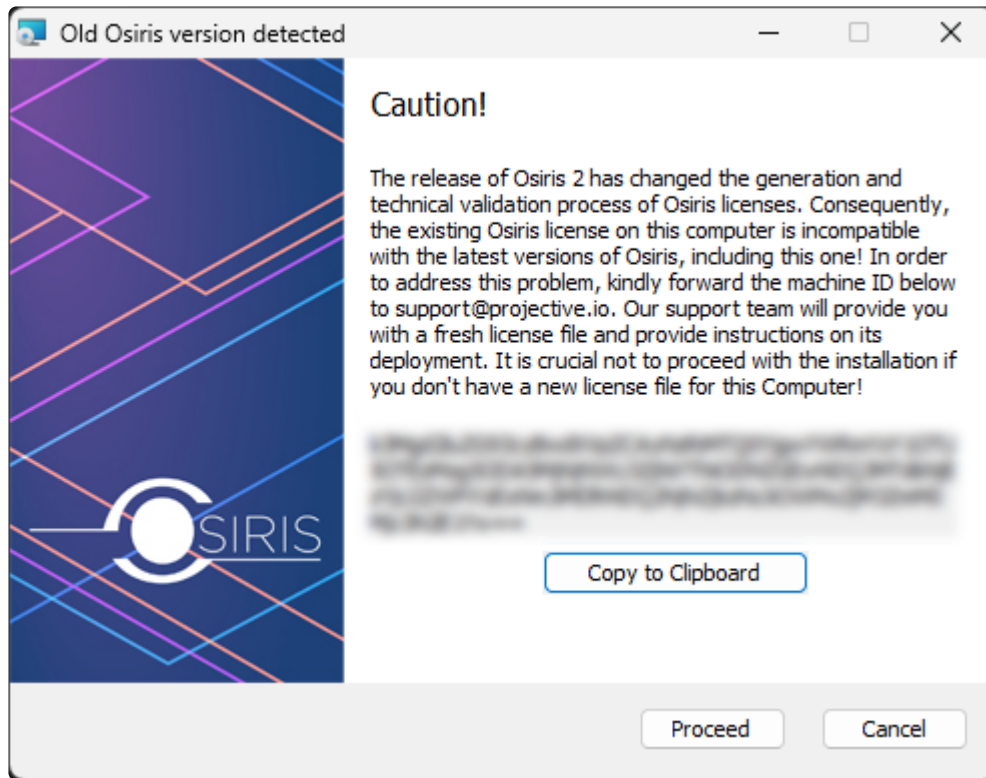
3.5.4. Upgrading from Legacy Osiris to Osiris 2

Prerequisite

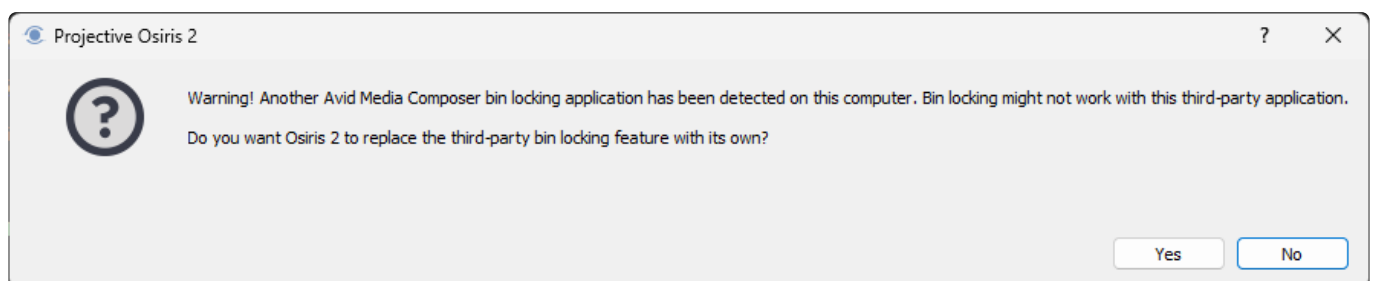
The below steps are only applicable when a legacy version of Osiris is installed on the system. The upgrade process is designed to be as interruption-free as possible.

Upgrade Process

1. Make a backup of your legacy Osiris license file. The file is typically located in `C:\Program Files\Osiris` and has a `.license` extension.
2. Download the latest Osiris 2 installer from the [Osiris download portal](#).
3. Double-click on the `osiris_2.x.x_setup.msi` file to start the installation process
4. You will see the following message:



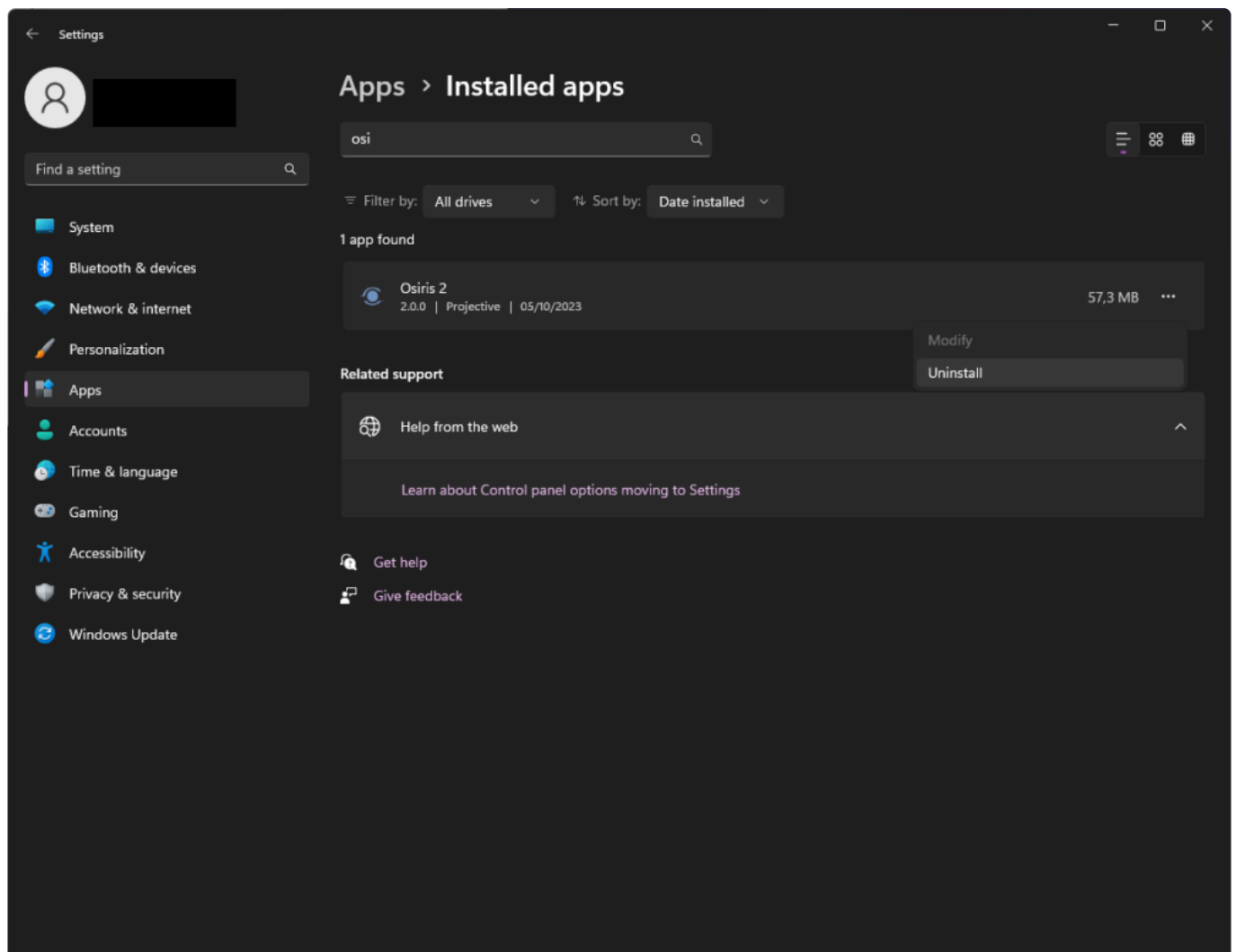
5. Copy the Machine ID to the clipboard and then save it to a spreadsheet or text document alongside the name of the Computer.
6. Cancel the installation by clicking on the `Cancel` button. This ensures that you can continue using legacy Osiris until you have received a new license file for Osiris 2.
7. Repeat steps 1 – 5 for all the Computers that are running legacy Osiris.
8. Put the Machine IDs and computer names in a spreadsheet and send it to support@projective.io. Our support will then provide the new licenses for Osiris 2.
9. Once you have received the new license file, proceed with the [activation chapter](#) of this manual.
10. Once you have placed the license file, start Osiris.
11. You will see this message. Click `Yes` to replace the bin-locking mechanism of the legacy Osiris with the new one. If replacing the existing bin-locking feature fails, Start the Osiris app as an Administrator and click `Yes` again. Administrator privileges won't be needed on subsequent app launches.



12. Test if bin-locking is working by [following the steps in the usage chapter](#).
13. If everything is working as expected you may uninstall the legacy Osiris app from the Computer using the Windows `Add or remove programs` feature. Be advised that the name of the legacy Osiris is `Projective Osiris` while the name of the new app is `Osiris 2`. Make sure to uninstall only the `Projective Osiris` app from the Computer.

3.5.5. Uninstalling Osiris 2

1. In Windows, open the `Add or remove programs` panel.
2. Select `Osiris 2` from the list and uninstall it.



4. Legacy Osiris Manuals

4.1. Legacy Osiris for MacOS

This chapter describes how to install and configure Osiris for MacOS.

- [Osiris Changelog](#)
- [Workstation Preparation](#)
- [Installation](#)
- [Usage](#)
- [Quote Request & Activation](#)
- [Bulk-Deploying Osiris](#)
- [Adjusting the Osiris “block size” and “IO size”](#)
- [Troubleshooting & Tips](#)

4.1.1. Osiris Changelog (macOS)

Osiris v1.8.0, 09.10.2023

- Added: (macOS) support for macOS 14 (Sonoma)

Osiris v1.7.5, 05.01.2023

- Added: (macOS) support for macOS 13 (Ventura)
- Dropped: (macOS) support for macOS 10.14 (Mojave) and 10.15 (Catalina)

Osiris v1.7.4, 21.10.2022

- Updated: pamFS to 4.4.1
- Updated: macOS version validation

Osiris v1.7.3, 14.07.2022

- Added: Increase total mounted volumes limit to 50 volumes
- Added: Increase total configurable volumes limit to 200 volumes
- Updated: Increase trial from 10 to 14 days

Osiris v1.7.2, 23.05.2022

- Added: Manually setting block size and io size in the configuration file
- Updated: More robust handling of the configuration file

Osiris v1.7.1, 26.04.2022

- Updated: (macOS) pamFS to 4.3.0
- Updated: some error messages

Osiris v1.7.0, 21.04.2022

- Fixed: Application Helper authorization error
- Updated: pamFS to 4.2.5 (loading pamFS with SIP disabled on macOS 11 Big Sur)
- Added: `Save configuration on exit` option in the new `Settings` window.

Osiris v1.6.2, 07.01.2022

- Fixed: (macOS) Showing wrong total/available space on mounted Volumes
- Update pamFS to 4.2.4

Osiris v1.6.1, 04.01.2022

- Add `-m` (or `—machineid`) option to print the machine id on the terminal

Osiris v1.6.0, 03.12.2021

- Add support for macOS 12 (Monterey)
- Update pamFS to 4.2.3
- Drop support for macOS 10.13 (High Sierra)

Osiris v1.5.1, 07.06.2021

- Update pamFS to 4.1.2

Osiris v1.5.0, 24.03.2021

- Add support for **Intel-based** macOS 11 (Big Sur)
- Drop support for macOS 10.12 (Sierra)

Osiris v1.4.2, 05.02.2021

- Ignore third party “kext not accepted” error

Osiris v1.4.1, 27.01.2021

- Log error codes explicitly

Osiris v1.4.0, 17.07.2020

- Add support for macOS 10.15
- Use pamfs for managing volumes

Osiris v1.3.0, 23.01.2019

- Add support for macOS 10.14
- Add support for macOS Dark Mode
- Drop support for macOS 10.11

- Change trial period from 30 to 10 days
- Update Qt Framework to 5.12
- Update osxfuse
- Minor code improvements

Osiris v1.2.0, 30.05.2018

- Add support for macOS 10.13
- Drop support for macOS <= 10.10
- Update osxfuse

Osiris v1.1.4, 19.04.2017

- May be installed along Avid ISIS (one application can be opened at a time)

Osiris v1.1.3, 13.01.2017

- Skips already mounted/unmounted volumes when 'Mount all'/'Unmount all' buttons are used (does not display warnings any more)
- Fixes coexistence with Avid Nexis

Osiris v1.1.2, 05.12.2016

- Adds support for OSX 10.12
- Removes support for OSX 10.8
- Fixes problems with premature trial expiration
- May be installed along Avid Nexis (one application can be opened at a time)

Osiris v1.1.0, 09.08.2016

- Adds support for OSX 10.11
- Adds folder drag&drop functionality
- Adds "mount all" and "unmount all" functionality
- Adds support for multiple users working with Osiris on one machine
- Remembers last chosen folder in file open dialog
- Adds a separate dialog for creating new volumes
- Adds new dock icon
- Small visual changes
- Small bug fixes and improvements

Osiris v1.0.2, 18.09.2015

- Does not check for source paths existence when validating configuration file on start (some SANs take time to mount and they may not be available just yet when Osiris is running)
- Increases the limit of the number of mounts to 20
- Small bug fixes and improvements

Osiris v1.0.1, 07.08.2015

- Adds a button for entering the license key when the trial expires

Osiris v1.0.0, 28.07.2015

- Initial release

4.1.2. Workstation Preparation

Be sure to familiarise yourself with the following checklist when preparing workstations for use with Osiris for MacOS.

- Make sure your production uses [Media Composer Ultimate or Media Composer Enterprise](#) , as only these editions support bin locking!
- Use the same version/release of Media Composer Ultimate across all seats (if possible).
- Make sure that your macOS versions are supported by the [latest version of Osiris](#).
- Osiris **does not** work alongside other bin locking solutions, such as Avid Nexis, SAN Fusion, Dynamic Drive Pool (DDP), etc. Please make sure to uninstall respective clients and drivers before running Osiris.

4.1.3. Installation

Important!

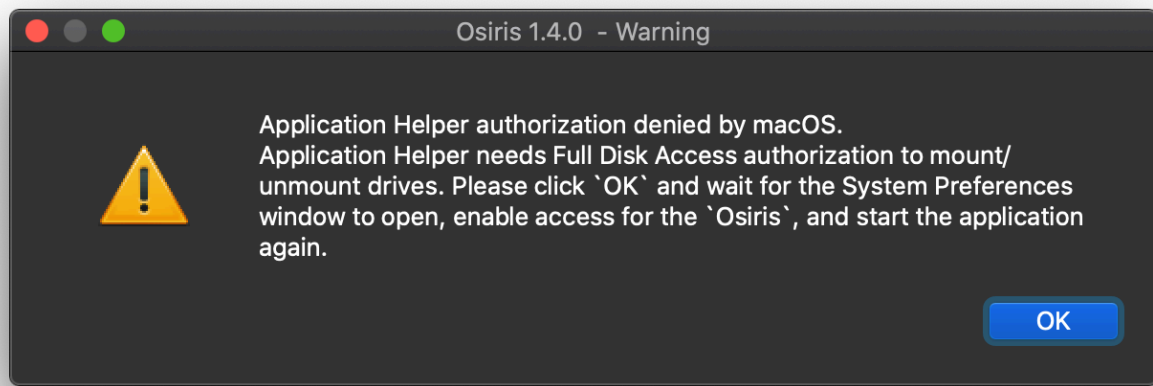
Because of macOS security policies, performing the following steps won't take effect if you connect to the macOS machine via Remote Desktop or if the mouse/trackpad is emulated by a 3rd party application (MagicPrefs, BetterTouchTool, Synergy, etc.). If you already have installed the app and cannot load it because of blocked system extensions, please [click here](#) for more help.

Note to Apple M1 Users

To install Osiris on Apple M1 hardware, you first need to Allow user management of kernel extensions from identified developers. The [related manual chapter](#) will guide you through that process.

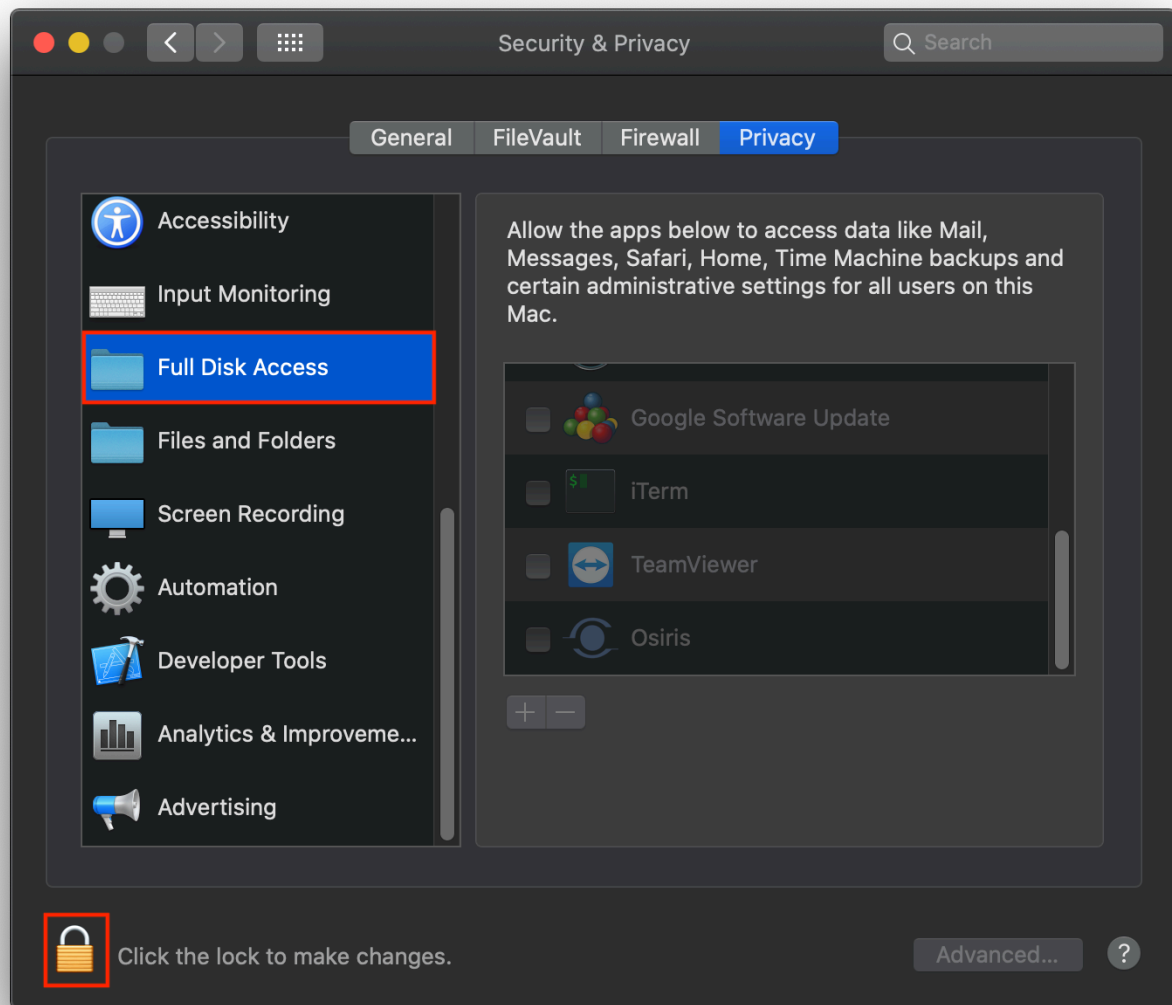
Installation

1. [Download the latest Osiris version](#) for macOS.
2. Run the .pkg installer.
3. Follow the installation instructions.
4. Start Osiris via Spotlight search or from within the macOS "Applications" folder.
5. Upon the first launch, you will see this message:

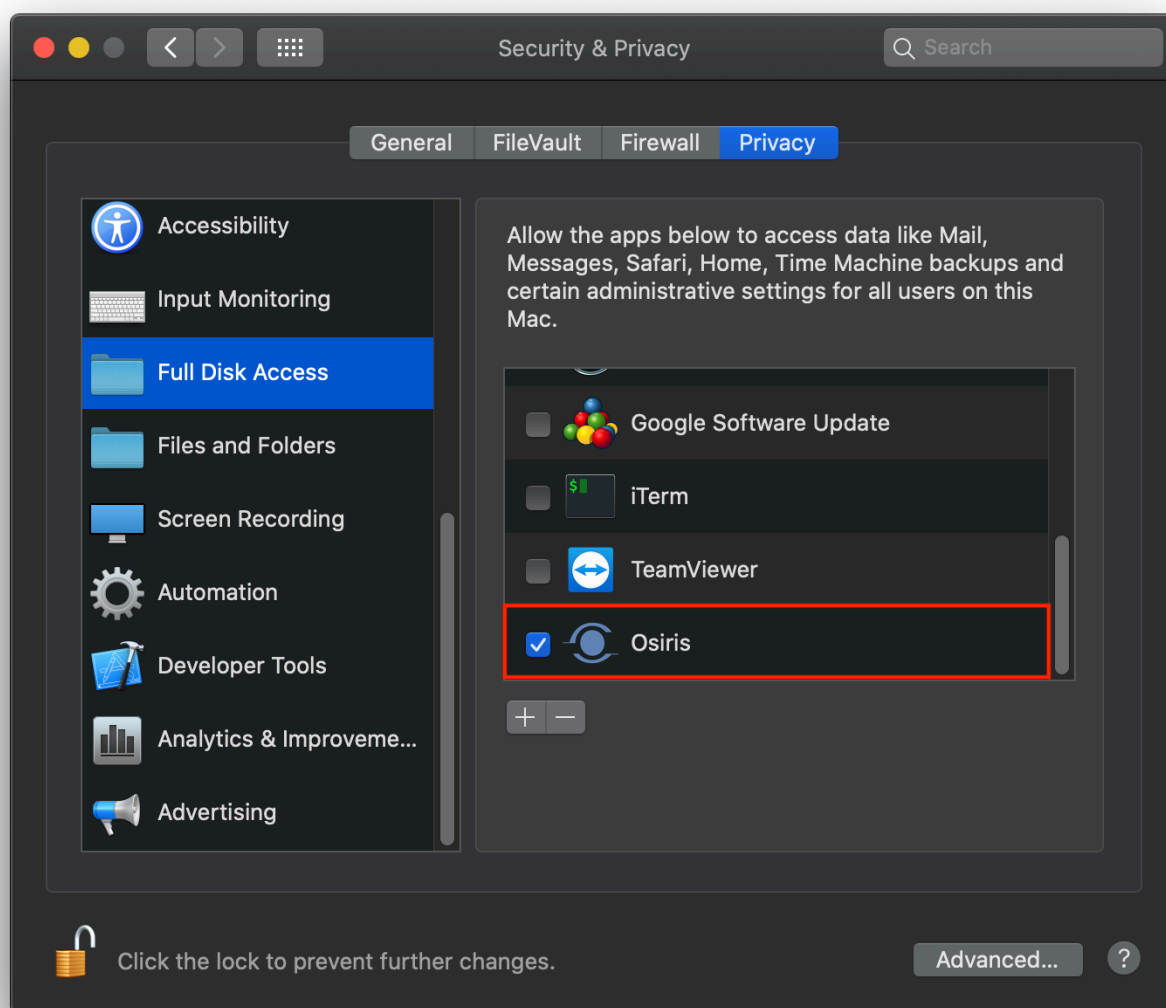


6. Click “OK” and wait for the “System Preferences” window to open.

7. Now click on “Full Disk Access” and unlock the settings by clicking on the lock icon in the lower-left corner.

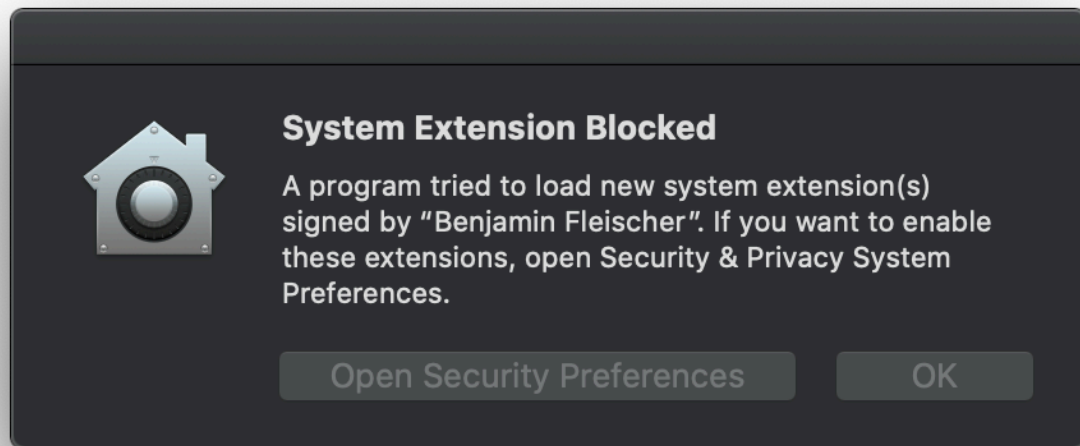


8. Once the settings are unlocked, check the box next to the "Osiris" entry.



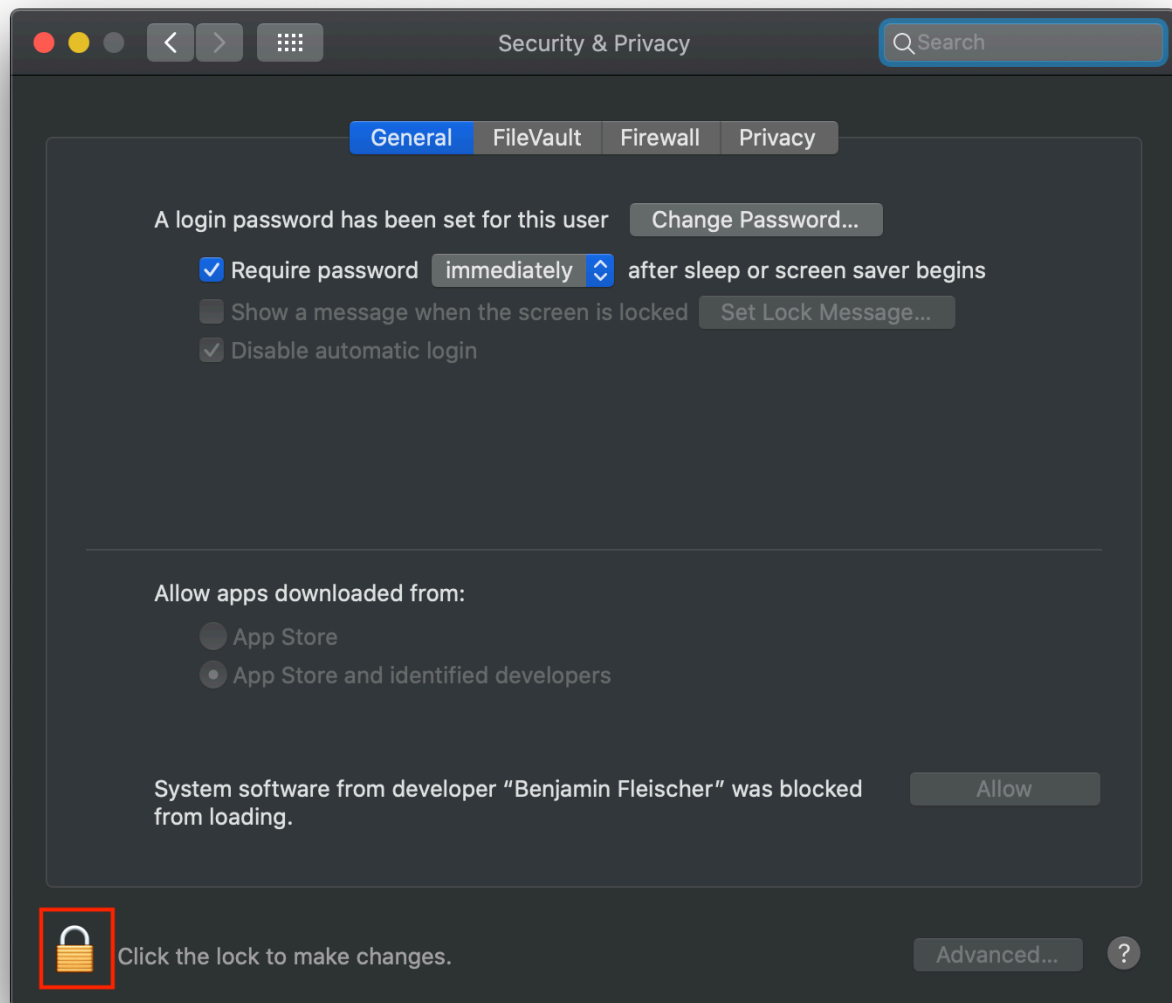
9. Start Osiris again. If you still see the message “Application Helper Authorization denied by macOS”, check the troubleshooting section on the bottom of this page.

10. Once you have created your first Osiris mount and attempted to mount it, you will see the following messages. It might be that you see two different messages for the same thing, but please focus on the message as shown here:

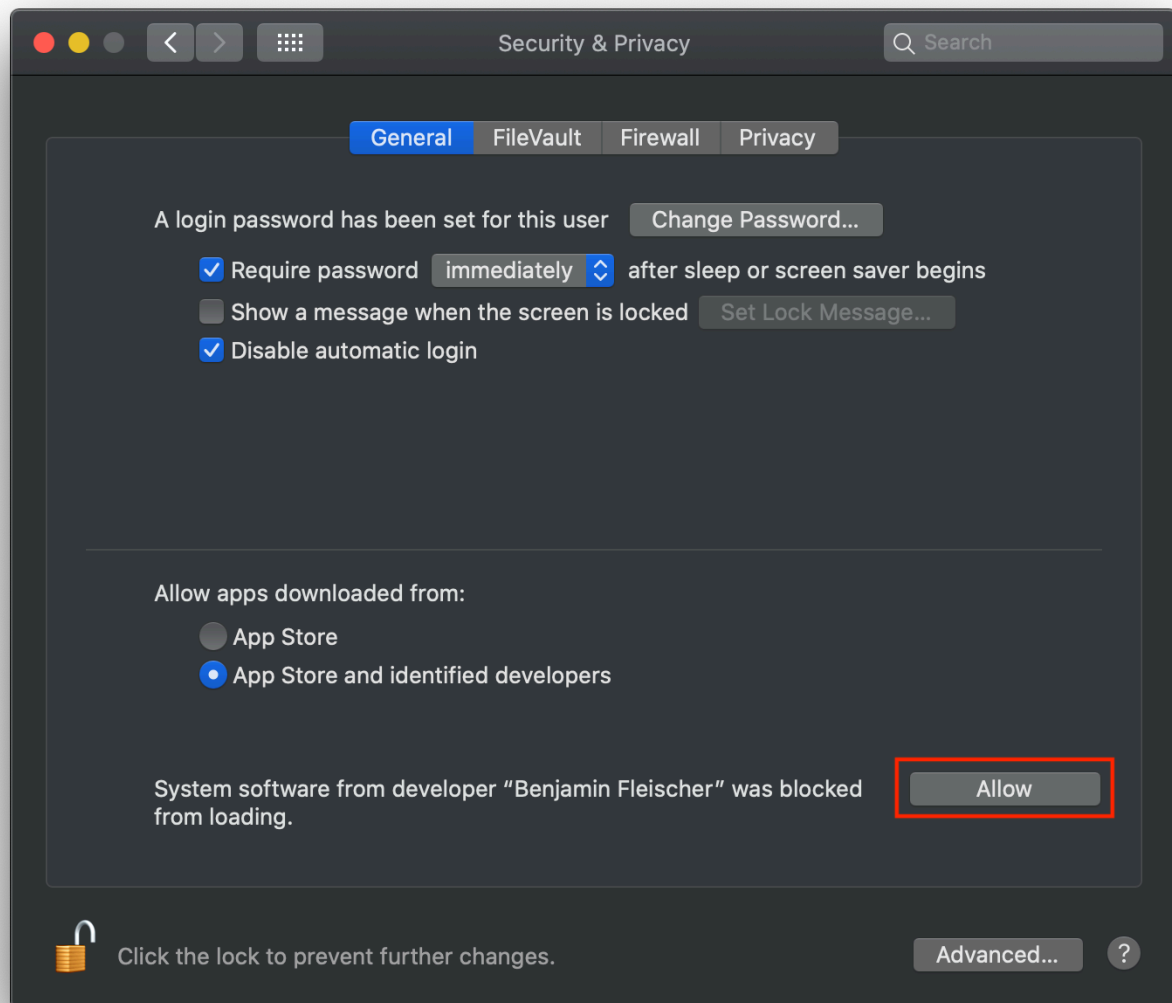


11. Click on "Open Security Preferences"

12. Once the "Security Preferences" window is open, click on the lock in the lower-left corner to unlock the settings.



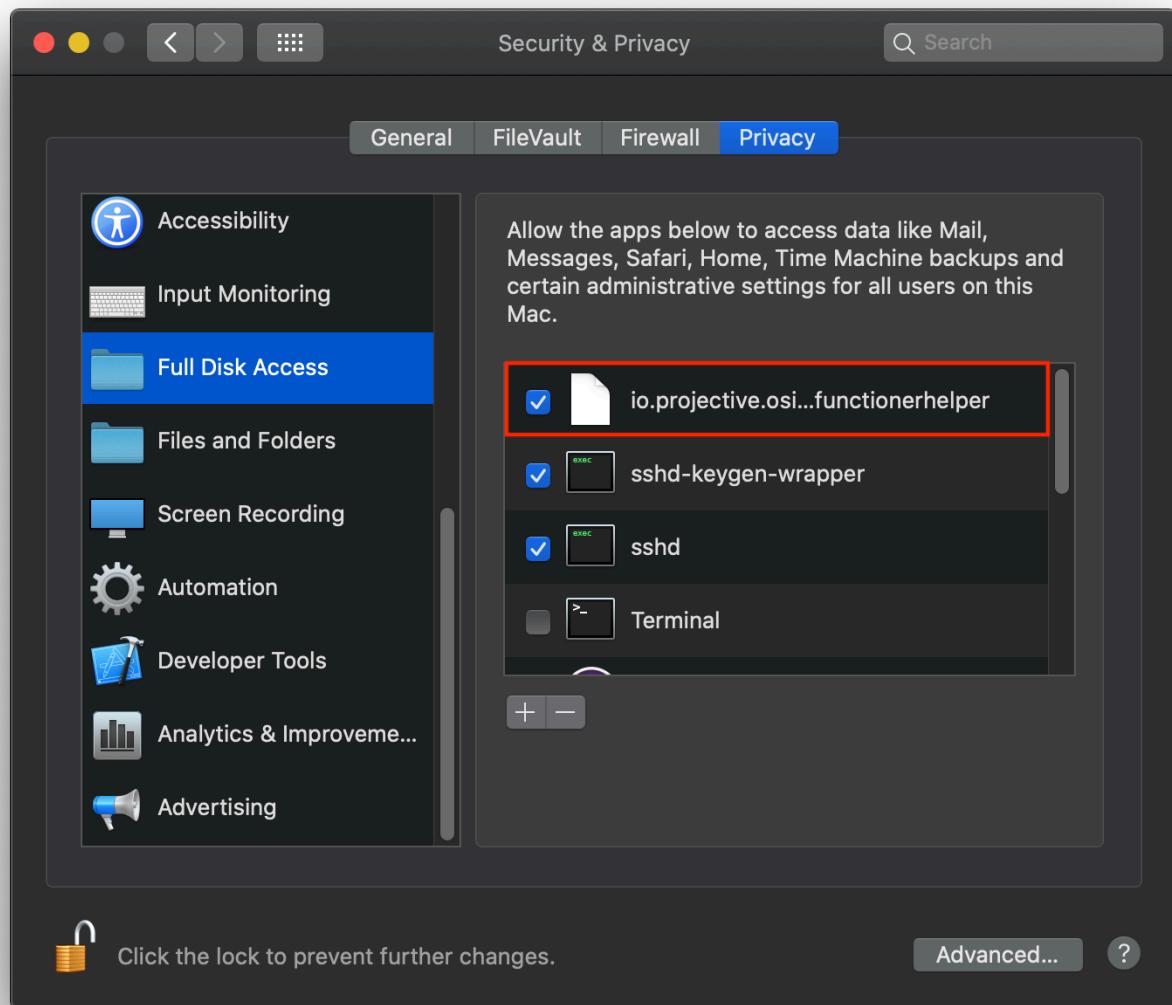
13. Once the settings are unlocked, click on the "Allow" button next to the message "System software from developer "Benjamin Fleischer" was blocked from loading".



Troubleshooting

I have granted Osiris "Full Disk Access" but I still see the message "Application Helper Authorization denied by macOS".

1. Go to "System Preferences" → "Privacy" and click on "Full Disk Access"
2. Check the box next to the entry "io.projective.osiris.continuumtransfunctionerhelper"



3. Start Osiris again

4.1.3.1. Apple Silicon: Allow user management of kernel extensions from identified developers

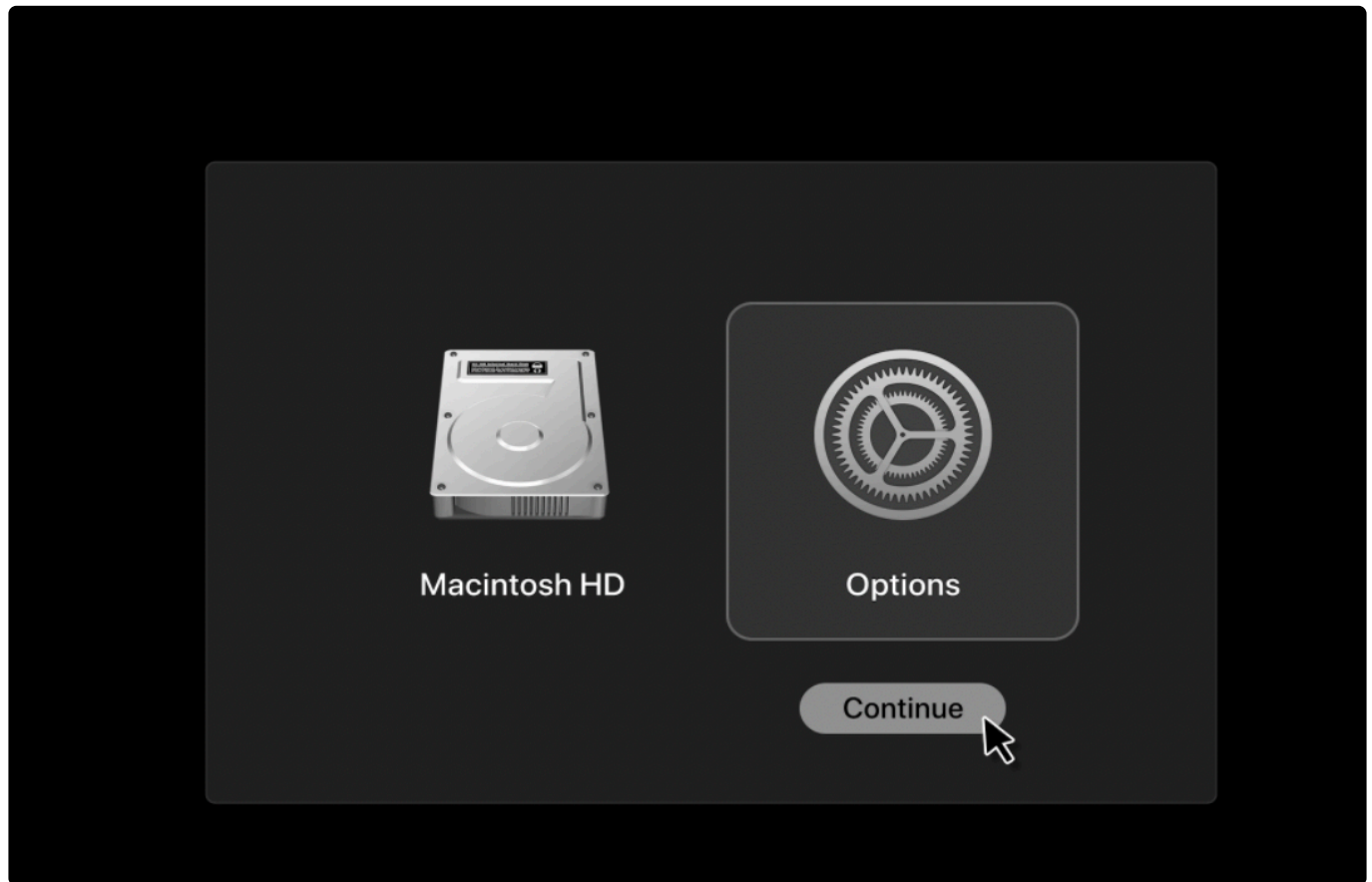
Introduction

On Apple silicon-based Macs, system extensions are blocked by default. The system extensions must be enabled in macOS recovery mode by following the steps below.

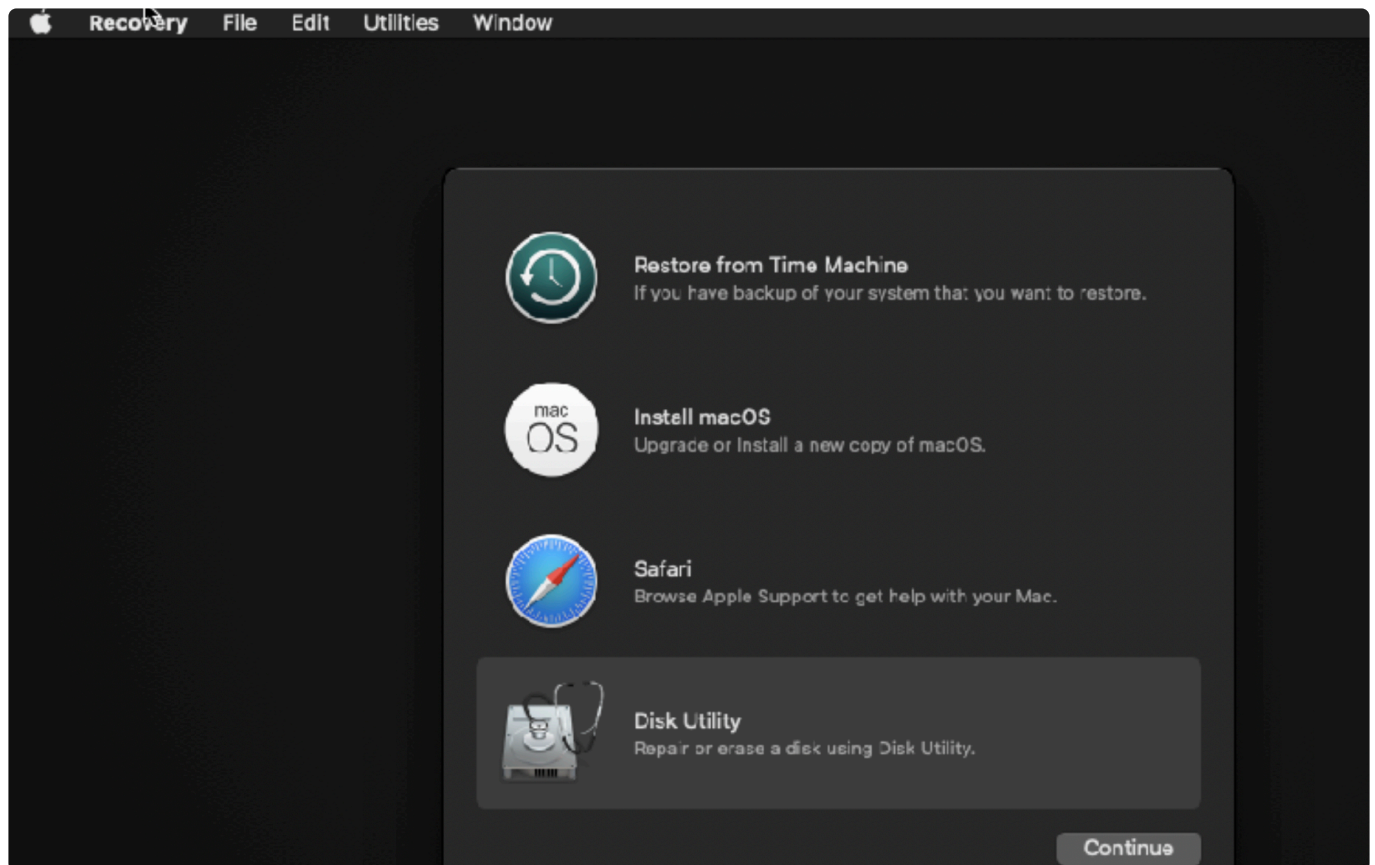
Enabling kernel extensions from identified developers

You will now need to go to the Recovery environment to enable system extensions.

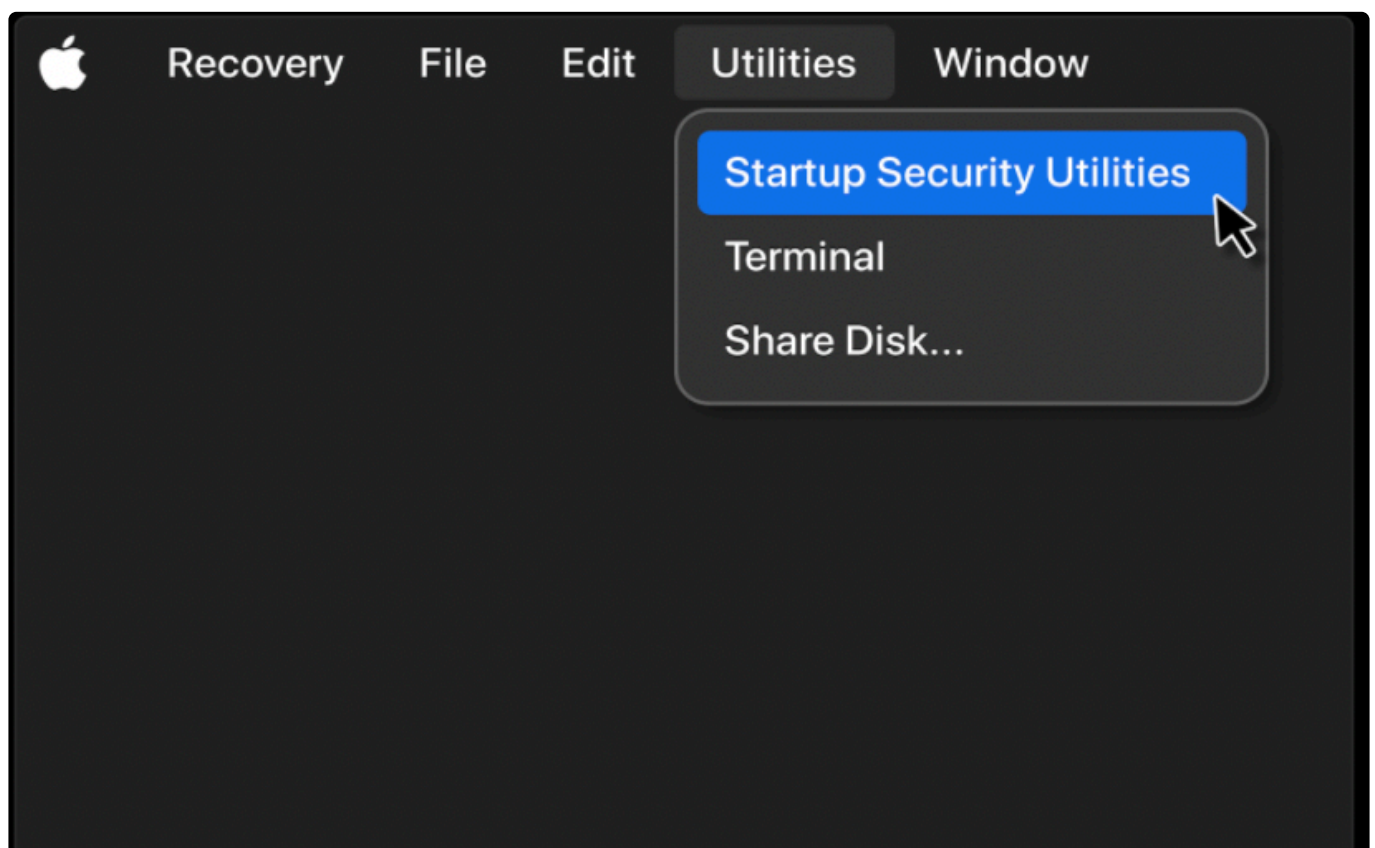
1. Shut down the system.
2. Turn the machine back on by pressing and holding the Touch ID or Power Button to boot in Recovery mode.
3. Select `Options` and click `Continue`.



After this, the following menu will appear:



4. Click on Utilities from the menu bar → Startup Security Utilities.



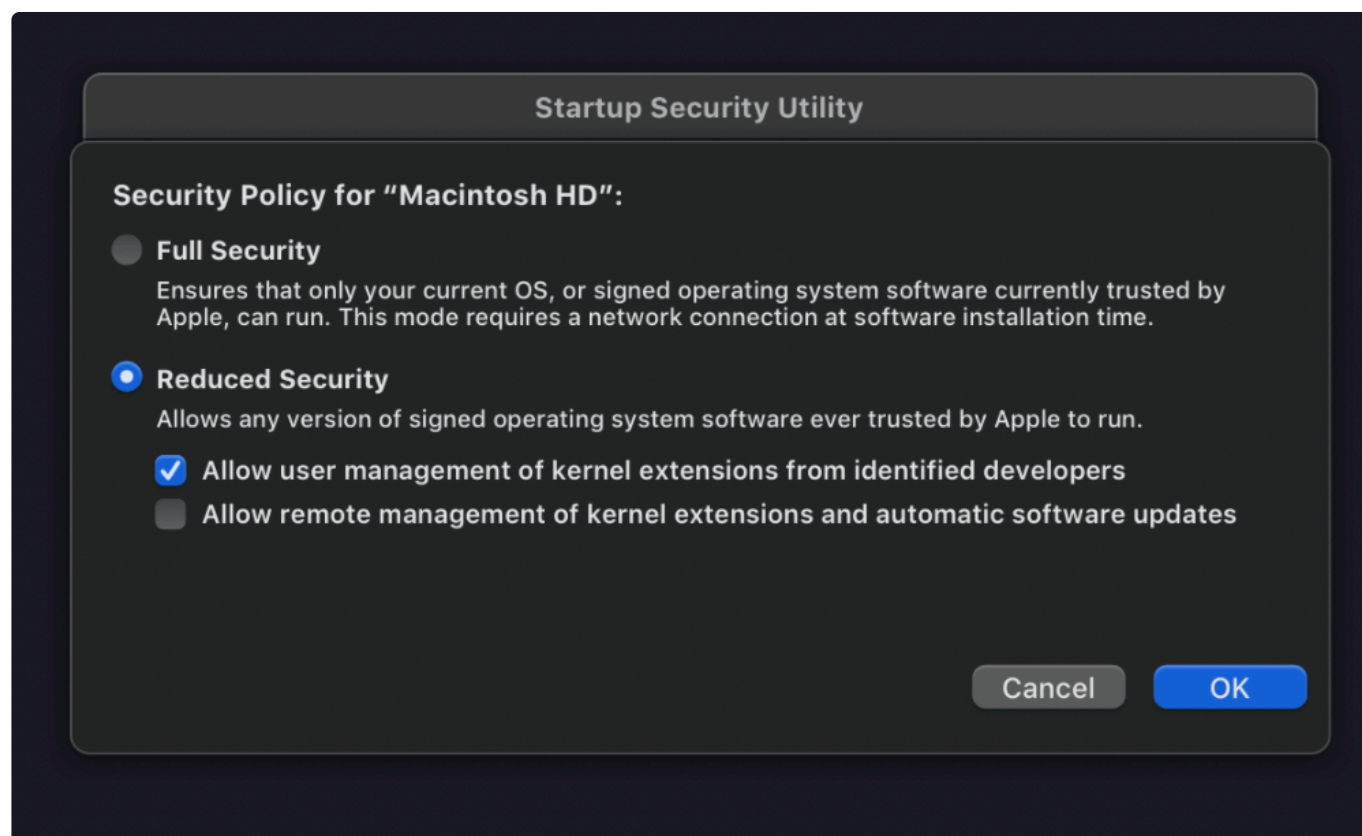
5. Select the hard drive where the Osiris desktop app is supposed to be installed and then click on the s

Security Policy button.



A window named Security Policy for the hard drive appears.

6. Select Reduced Security and then check the box next to Allow user management of kernel extensions from identified developers.



7. Click the OK button and restart your mac.

4.1.4. Usage

1. Start Osiris



2. Click on the “Add Volume” button



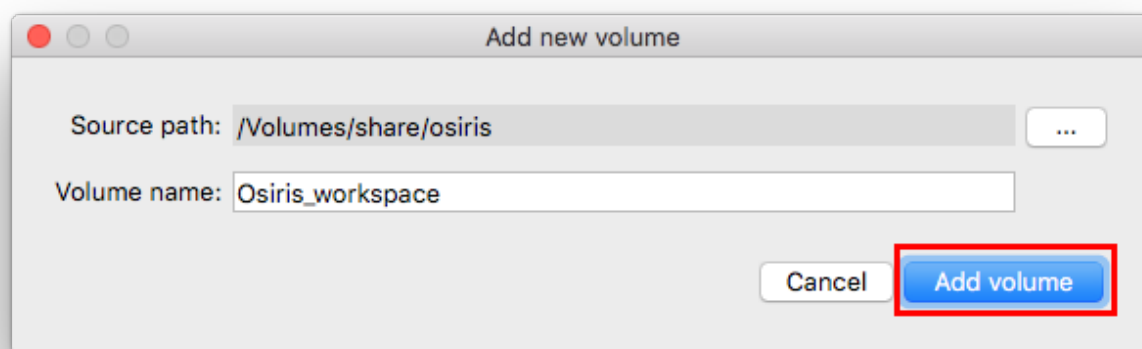
3. Click on the “...” button next to “Source path” and navigate to the network location that you would like to mount as an Osiris volume



Osiris allows you to create multiple volumes. You may create an Osiris volume for each of your Avid projects, a workspace for multiple Avid projects or even a mixture of both.

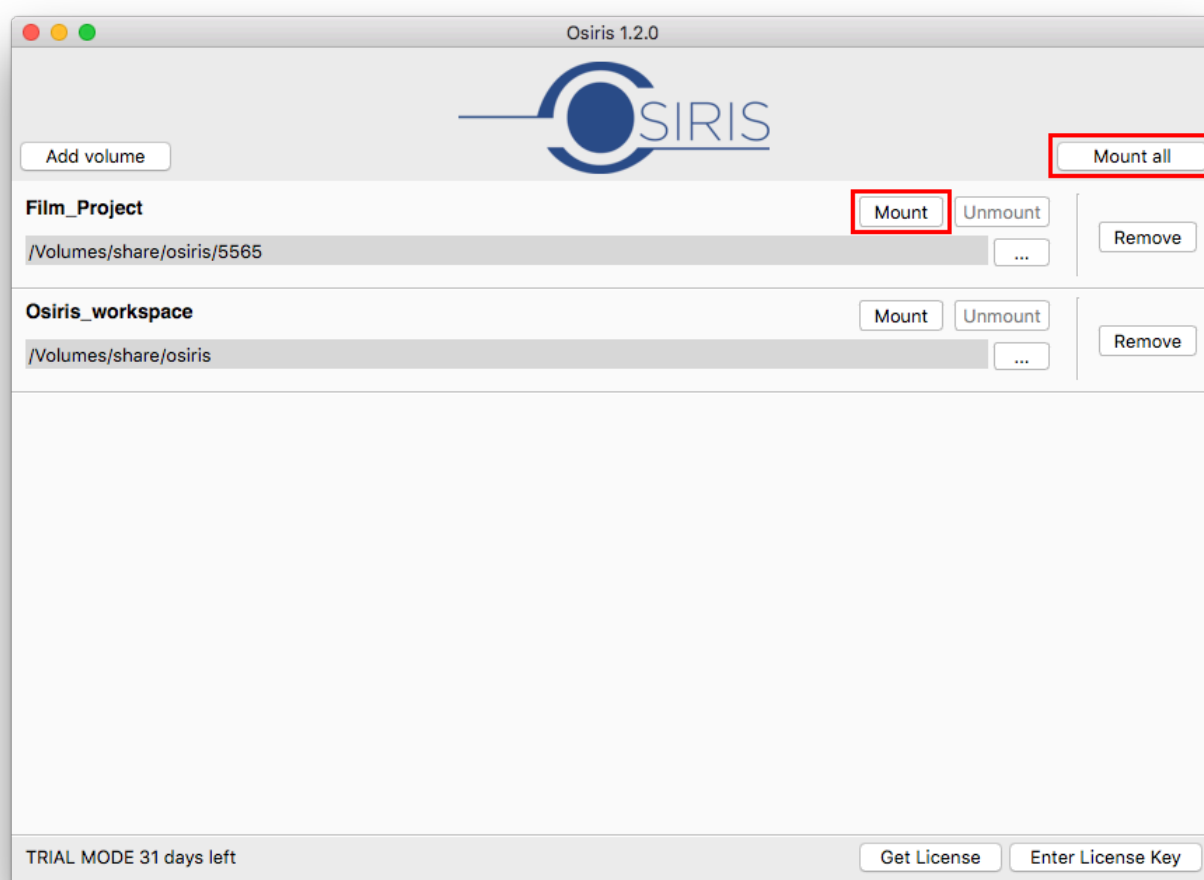
4. In the “Volume name” field, provide a name for your new Osiris volume (Please avoid spaces in volume names but use underscores instead)

5. Now click on the “Add Volume” button

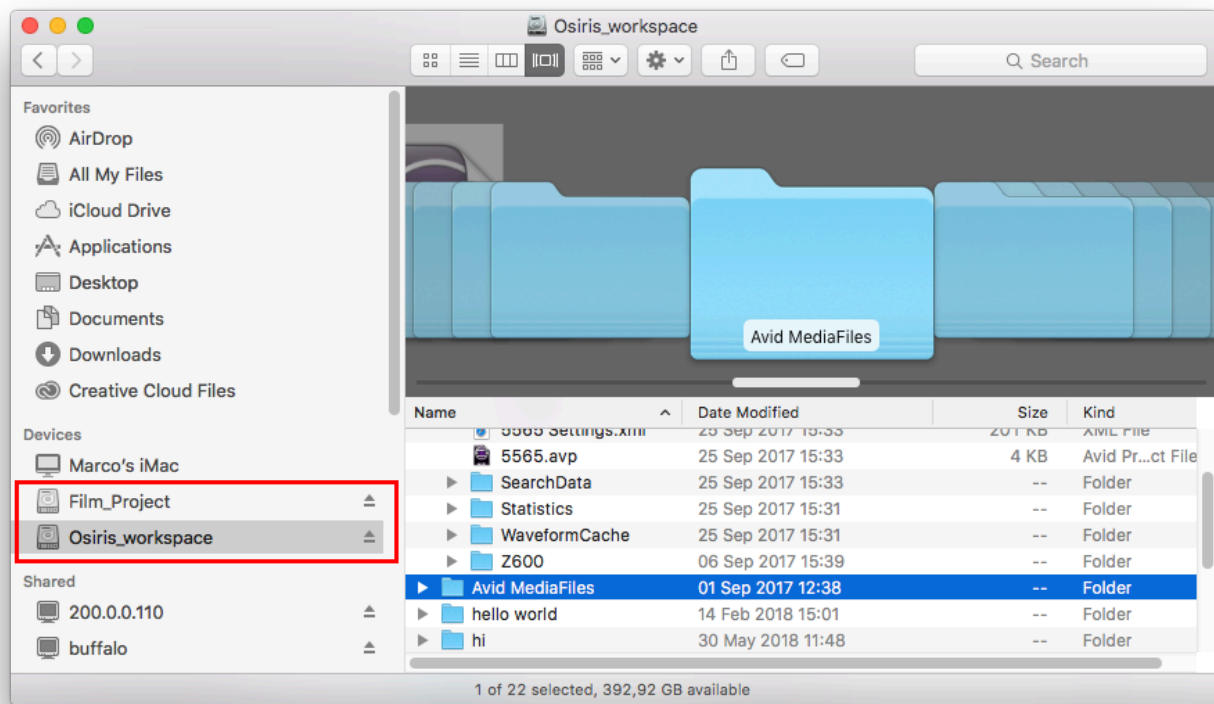


6. Repeat the steps 2 – 5 to create additional Osiris volumes

7. Mount a volume by clicking on the “Mount” button next to its name or click on the “Mount all” button to mount all of your Osiris volumes. You can mount up to 20 Osiris volumes simultaneously.

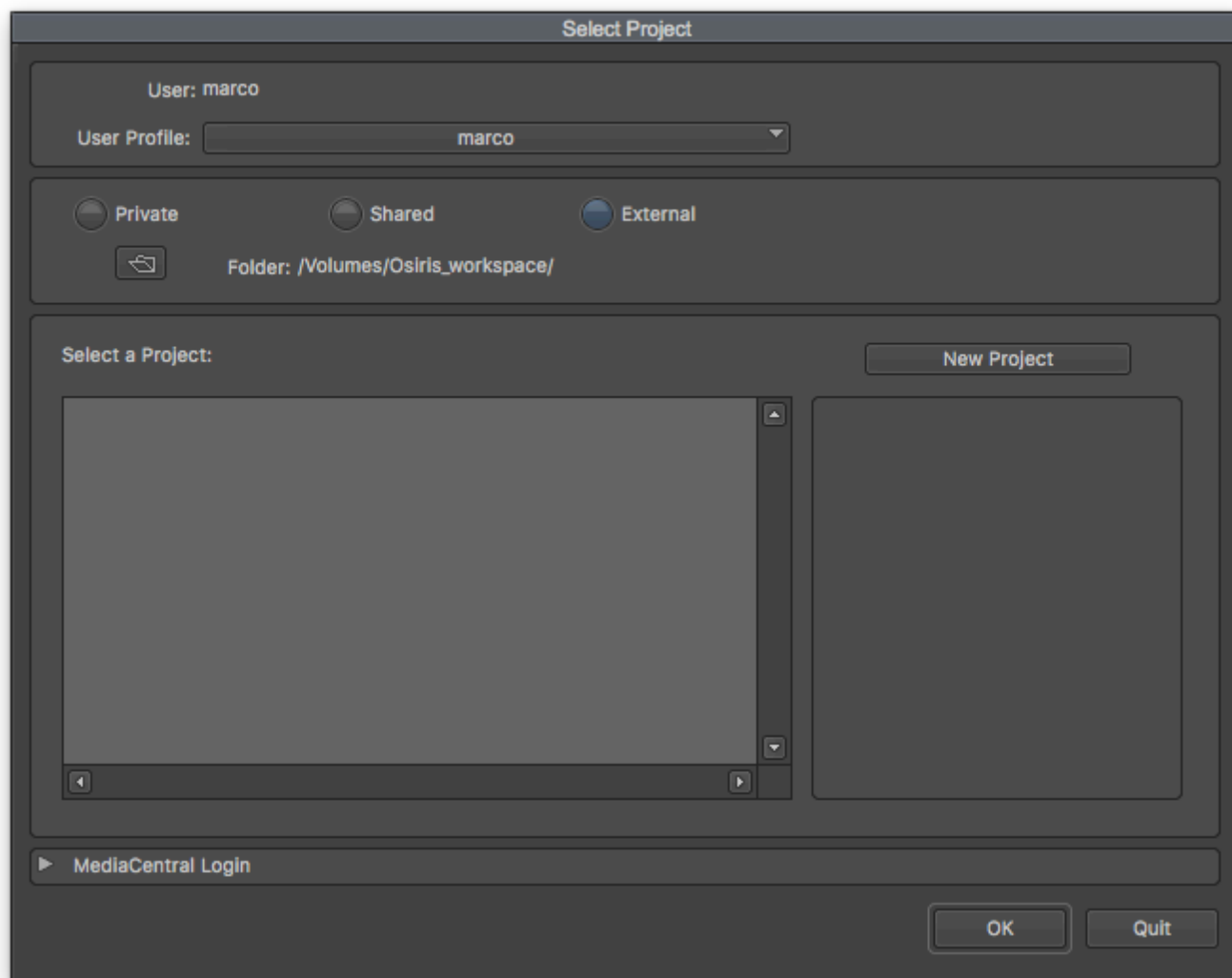


8. Your volumes will now appear in the macOS Finder



9. Launch Avid Media Composer™

10. In the “Select Project” window, navigate the Osiris volume that you would like to work on



11. On the Osiris volume, create a new Avid project and open it
12. Answer the following question with "Yes"

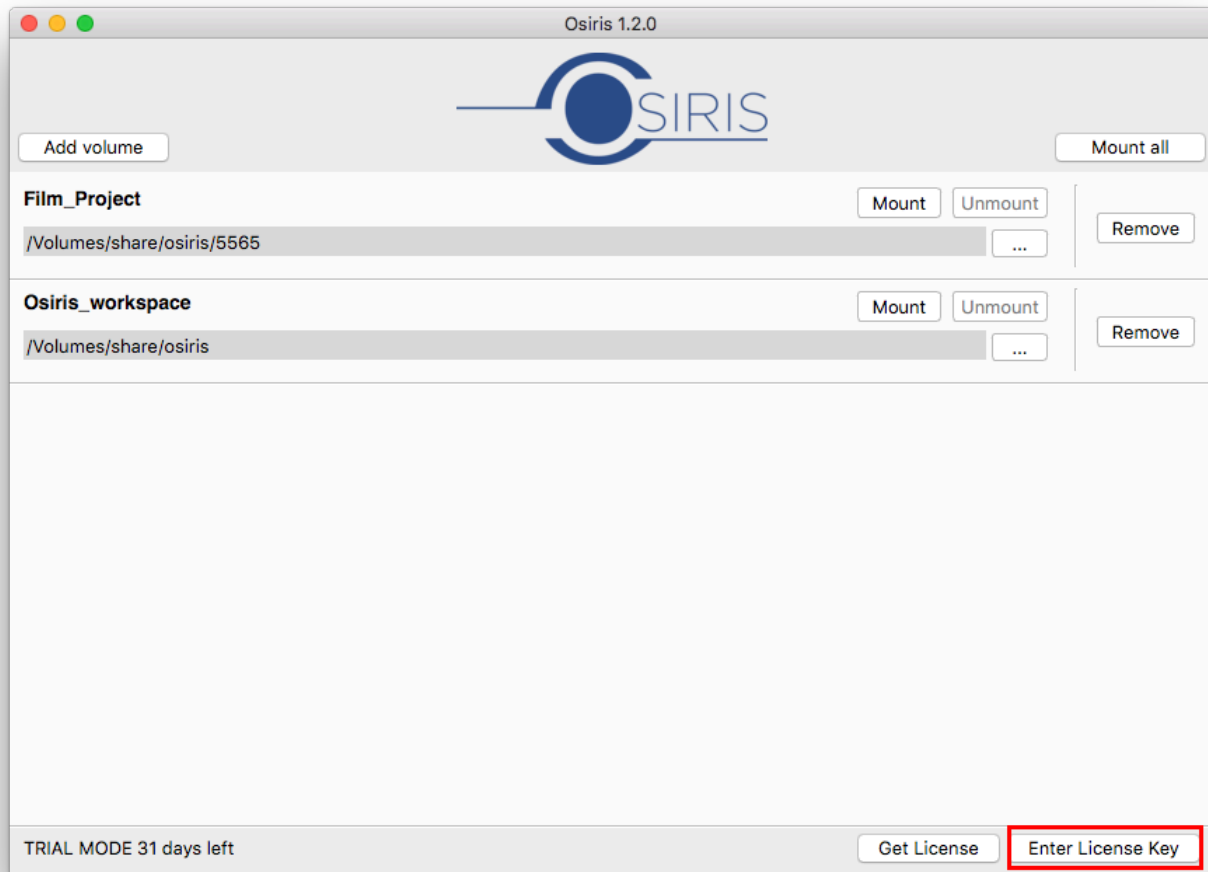


13. You are now in bin locking mode. If you would like multiple people to open the same project on another editing workstation, install Osiris there and repeat the above steps 1-4. **Make sure that the shared Osiris volumes have the same names and paths on all your editing workstations!**

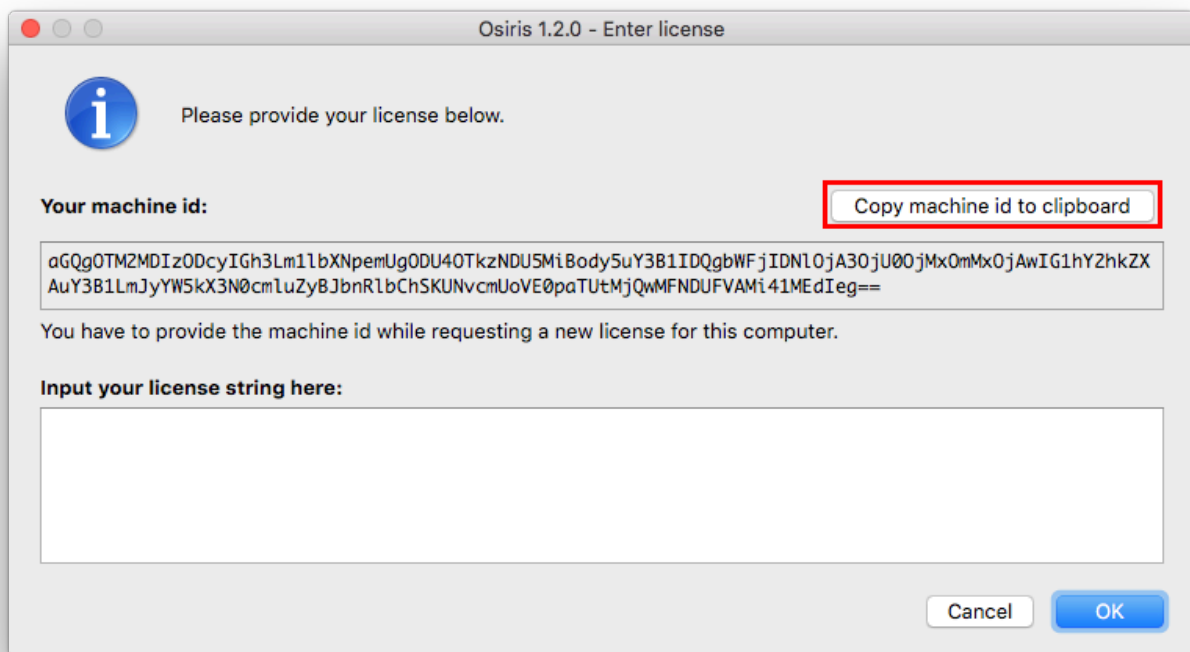
4.1.5. Machine IDs and Activation

Getting the Machine IDs

1. Open Osiris
2. Click on the `Enter License Key` button in the lower right corner.



3. Copy the machine ID by using the “Copy machine id to clipboard” button

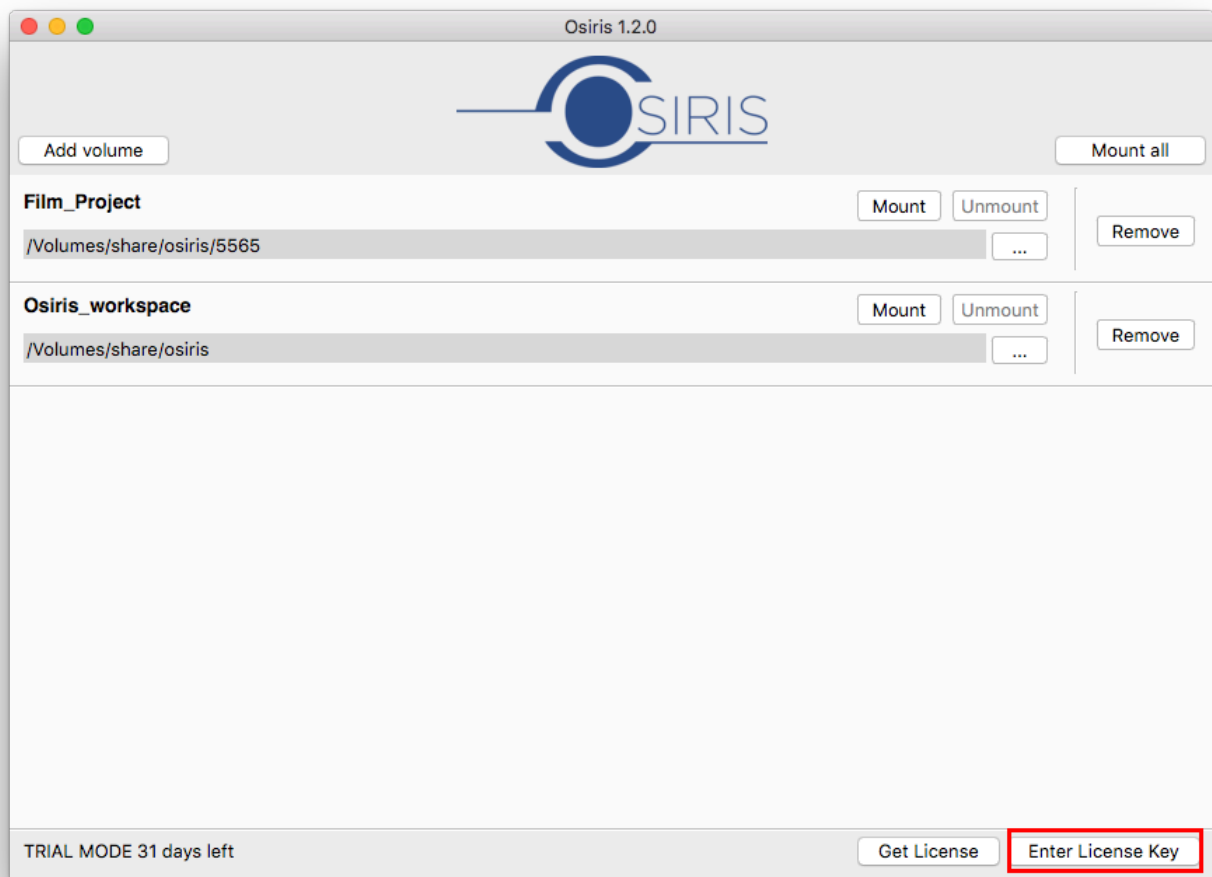


4. Repeat steps 1-3 on all of your Osiris workstations

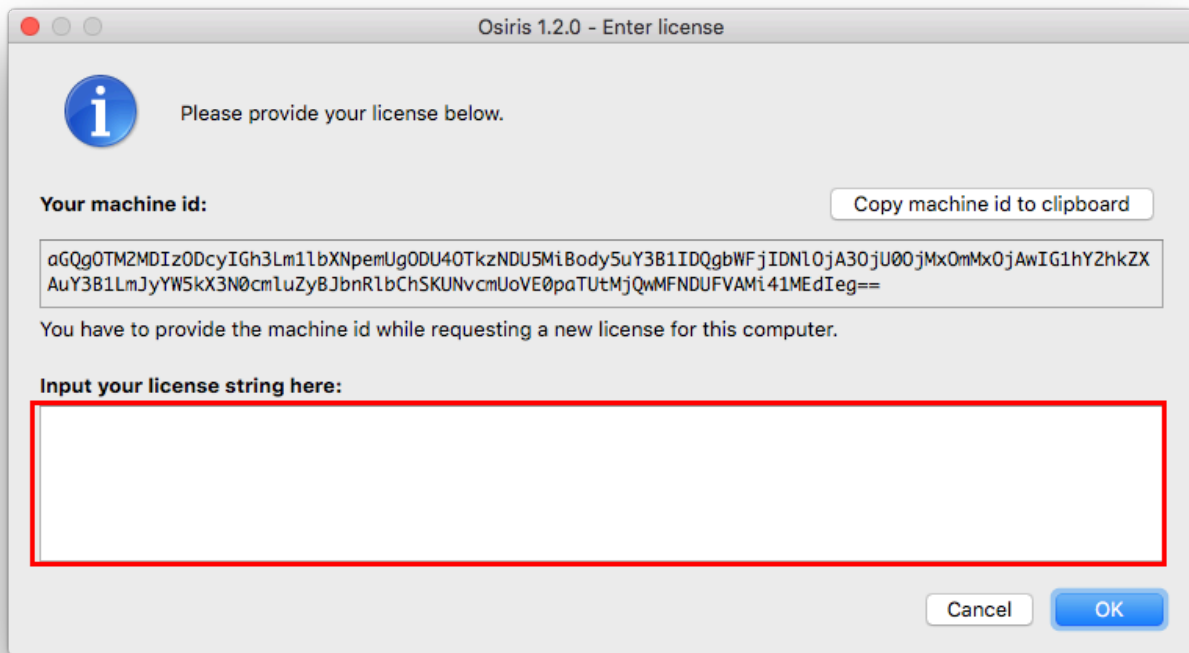
Activating Osiris

This step can only be performed if you have received your Osiris activation keys from Projective.

1. Open Osiris
2. Click on the “Enter License Key” button



3. Paste the license string for this workstation into the “Input your license string here” text field



4. Click “OK”
4. Repeat the steps 1-4 for all of your Osiris workstations

4.1.6. Adjusting the Osiris “block size” and “IO size”

Requirements

- This feature is available since Osiris 1.7.2

Introduction

Customers who encounter performance issues with Osiris volumes can manually adjust the block size and io size of Osiris via the config.

Usage

1. If you are running an Osiris version older than 1.7.2, uninstall Osiris [using the Osiris uninstaller](#).
2. [Install Osiris 1.7.2](#) or a newer version of Osiris.
3. Keep Osiris closed!
4. Now you can add the below lines to the Osiris config `/Users/Shared/Preferences/osiris/con`

fig/osiris.json. On the bottom of this page is an example config that shows you where to place these values.

```
"block_size": 4096,  
"io_size": 8192,
```

5. The `block_size` should match your storage block size and the `io_size` should be a multiple of it. Both values must be provided in bytes. E.g. Stornext 5 uses a block size of 4k, so `block_size` should be 4096 (4×1024) and `io_size` should be at least 8192 ($2 \times \text{"block_size"}$).

6. Open Osiris

7. Mount a volume and check in the Osiris log if the values have been applied. The log is located under `/Users/Shared/Preferences/osiris/logs/Osiris-current-date.log` and the output you are looking for looks like this:

```
[Info    13:19:03.385] Settings configuration file path: /Users/Shared/Prefere  
nces/osiris/config/osiris.json  
[Info    13:19:03.387] Block size from the config: |4096|  
[Info    13:19:03.387] IO size from the config: |8192|
```

Config Example

```
{  
  "save_config_on_exit": false,  
  "block_size": 4096,  
  "io_size": 8192,  
  "volumes": [  
    {  
      "name": "alex",  
      "src_path": "/Volumes/sb-global/folder1/"  
    },  
    {  
      "name": "hello",  
      "src_path": "/Volumes/sb-global/folder2/"  
    }  
  ]  
}
```