



Omega DataCube

Official User Guide



Published: July 2022
Edition: 1

Copyright © 2016-2022 Omega DataCube. All Rights Reserved.

Table of Contents

- Omega DataCube – Overview 3
- System Requirements 4
- Frequently Asked Questions 5
- Step-by-Step Tutorial Videos 8
- Setting Up and Attaching Your Omega DataCube 9
- Using the Omega DataCube with Android Devices 11
 - Installing and Running the Omega DataCube App for the First Time 12
 - Starting a Backup..... 17
 - Viewing Files Saved on the Omega DataCube 20
 - Restoring Files from your Omega DataCube 24
 - Customizing Backup Settings 28
- Using the Omega DataCube with iOS (iPhone/iPad) Devices 31
 - Installing and Running the Omega DataCube App for the First Time 32
 - Starting a Backup..... 37
 - Viewing Files Saved on the Omega DataCube 40
 - Restoring Files from your Omega DataCube 44
 - Customizing Backup Settings 48

Omega DataCube – Overview

The Omega DataCube is a small but powerful device that automatically finds, sorts, and safely backs up your photos, videos, and contacts – all while your phone is charging.

In this user guide, you will find sections covering all major operating systems: Microsoft, macOS, Android, and iOS. Each section provides detailed operating instructions and screenshots for that specific operating system.

Approximate Number of Files Stored on the Omega DataCube:

	32GB	64GB	128GB	256GB
Files Stored	12,800	25,600	51,200	102,400

**Please note that storage capacity per GB listed above is approximate, and exact storage amounts vary depending on file type and size.*



Copyright © 2016-2022 Omega DataCube. All Rights Reserved.

System Requirements

iOS

iOS and iPad OS 10 and Later

macOS

Android Version 5 (Lollipop) and Later

Android

Microsoft Windows Vista SP1 and Later

Microsoft Windows

Apple macOS 10.6.6 and Later

Frequently Asked Questions

Q: Which devices work with the Omega DataCube?

iPhone, iPad, iPad Pro

Android phone with Mini-USB, Micro-USB, or USB-C connectors

**The USB-A male connector of the Omega DataCube supports Android devices with OTG function enabled, running Android version 5-12 and above.*

NOTE: Charge-only cables are not supported – Your USB charging cable must also be able to transfer data.

Q: Do I need to buy any extra cables so that Omega DataCube will work with my device?

Nope! The Omega DataCube is designed to work with the USB charging cables you already have in your house. No extra accessories needed!

Q: How many photos can I store on the Omega DataCube?

Approximate Number of Photos Stored on the Omega DataCube:

32 GB – 12,800 photos

64 GB – 25,600 photos

128 GB – 51,200 photos

256 GB – 102,400 photos

**Please note that storage capacity per GB listed above is approximate, and exact storage amounts vary depending on file type and size.*

Q: What photo file size is used when we say the 128GB version can store 51,200 photos?

We use an average photo file size of 2MB for our calculation. We picked this size for our calculation because it is the approximate size of an 8MP photo saved in a .JPEG format.

Some file sizes are much larger, such as camera RAW files, movie files such as .MOV and .MPEG4, and photos taken with cameras that can take photos greater than 8MP, so the number of files that can be stored on the Omega DataCube can vary.

Q: What file types can the Omega DataCube find and save?

Nearly all of them! It saves your standard JPEG, HEIC, PNG, GIF, MOV, and MPEG4, but it also saves a vast array of file types, as listed below:

PHOTO EXTENSIONS:

JPEG (.jpg;.jpeg;.jpe;.jfif)

HEIC (*.heic, *.heics, *.heif, *.heifs, *.avci, *.avcs)

GIF (*.gif)

PNG (*.png)

BMP (.bmp;.rle;*.dib)

TIFF (.tif,.tiff)

ICO (*.ico)

Camera Raw (*.crw, *.nef, *.raf, *.orf, *.mrw, *.dcr, *.mos, *.raw, *.pef, *.srf, *.dng, *.x3f, *.cr2, *.erf, *.sr2, *.kdc, *.mfw, *.mef, *.arw, *.nrw, *.rw2, *.rwl, *.iiq, *.3fr, *.srw)

Photoshop (*.psd, *.pdd, *.pdp, *.pse, *.eps)

PICT File (*.PCT, *.PICT)

VIDEO EXTENSIONS:

MOV (*.mov, *.qt, *.hevc)

MPEG4 (*.mp4, *.mpeg4, *.m4v, *.h264)

AVI (.avi) WMV (.wmv)

Q: Does the Omega DataCube need to install anything on my computer?

The Omega DataCube offers a FREE app that allows you to back up, view, and organize your photos, videos, and contacts with ease. There are no monthly charges or download costs for using the app – just download the app and the Omega DataCube will back up your files while your phone charges.

Q: What is the Root Folder and why am I getting this error message?

If you are using the Omega DataCube for the first time, you may receive the error message “get root menu failed” when attempting to back up your files. Check out our [Troubleshooting Guide](#) for tips on how to avoid seeing this message.

Q: Can I use the Omega DataCube as an ongoing backup solution?

Yes, it's a great backup solution! We suggest leaving the Omega DataCube plugged into your charger so

that you can back up your favorite photos, videos, and contacts each time your phone charges.

Q: How do I view the files saved on my Omega DataCube?

Viewing the files saved on your Omega DataCube is easy! Check out our [Troubleshooting Guide](#) for tips on how to view your files on your mobile device or computer.

Q: How will the Omega DataCube sort my files? Are there sorting options to choose from?

The Omega DataCube saves and sorts files by File Type -> -> User albums. It will then list your files from newest to oldest.

You can sort by photos/videos and contacts on iOS, and you can sort by photos/videos/audio/documents/contacts on Android. If viewing files on your macOS or Windows, you can use the normal sort and view settings provided with File Explorer (Windows) and Finder (macOS).

Step-by-Step Tutorial Videos

Follow Along with Our Tutorial Videos to Easily Begin Using Your Omega DataCube



<https://www.youtube.com/embed/UGWi12omvQY?rel=0>

iOS Devices:

[Omega DataCube Tutorial for iOS Devices](#)

Android Devices:

[Omega DataCube Tutorial for Android Devices](#)

Setting Up and Attaching Your Omega DataCube

To Prepare Your Omega DataCube for Use, Please Complete the Following Steps:

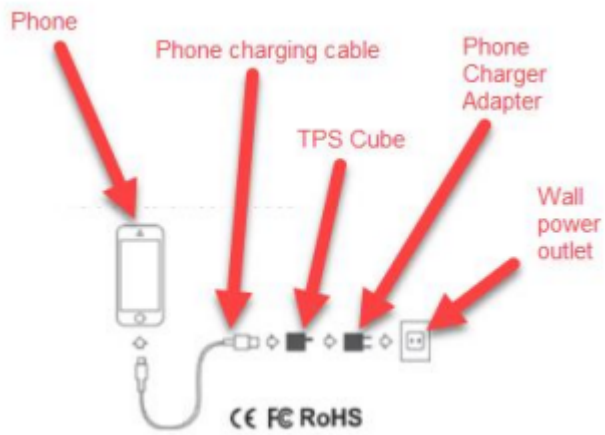
Step 1. Insert the Micro SD card that came with your Omega DataCube into the Omega DataCube.



Step 2. Plug the Omega DataCube into your phone's charger adapter.



Step 3. Connect your phone's charging cable to both the Omega DataCube USB slot and the phone device.



! IMPORTANT NOTE: Charge-only cables are not supported. Cables must be able to transfer data as well. The cable that came with your phone, for example, is capable of both charging and data transfers.

Using the Omega DataCube with Android Devices

Please Choose a Topic:

[Installing and Running the Omega DataCube App for the First Time](#)

[Starting a Backup](#)

[Viewing Files Saved on the Omega DataCube](#)

[Restoring Files from your Omega DataCube](#)

[Customizing Backup Settings](#)

Installing and Running the Omega DataCube App for the First Time

To Install the Omega Datacube App and Start Your First Backup, Complete the Following Steps:

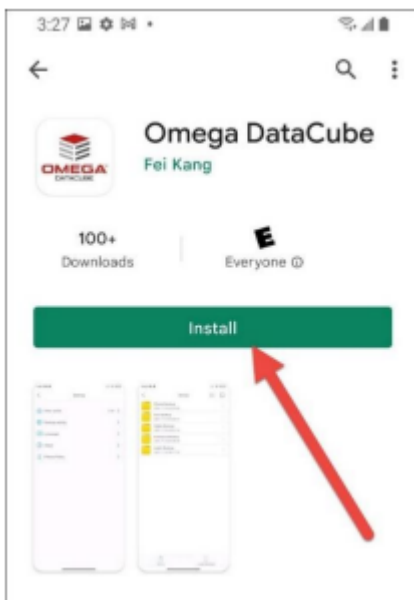
Step 1. Ensure the Micro SD card is inserted into the Omega DataCube and your Android device is properly attached to the Omega DataCube.

**See the [Setting Up and Attaching Your Omega DataCube](#) section for details on how to do this.*

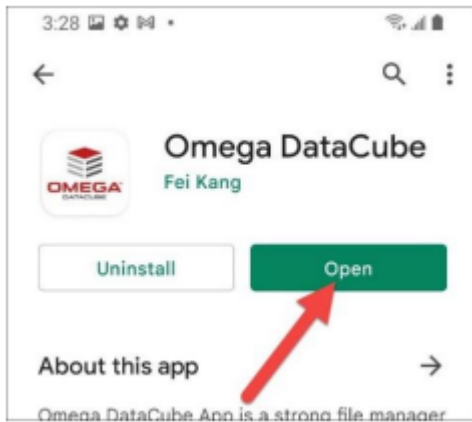
Step 2. Open the Google Play app on your Android device.

Step 3. Search for “Omega DataCube”.

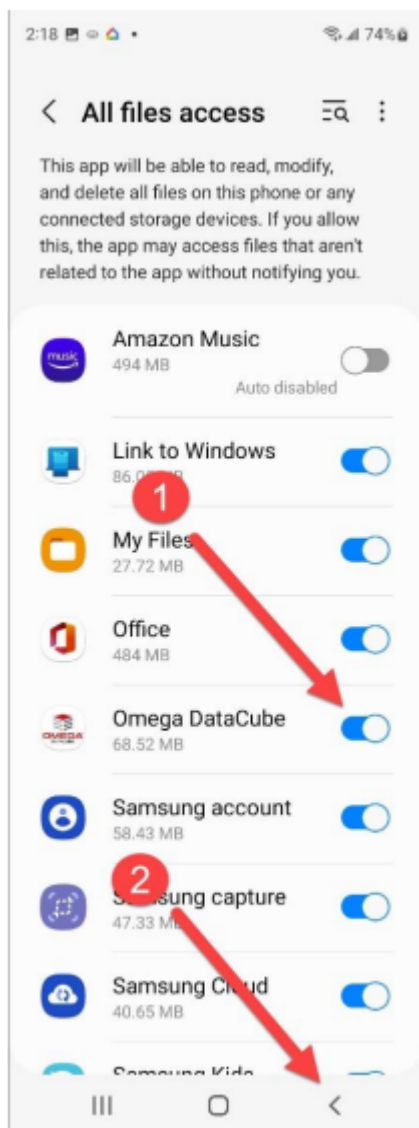
Step 4. Tap “Install” to install the app.



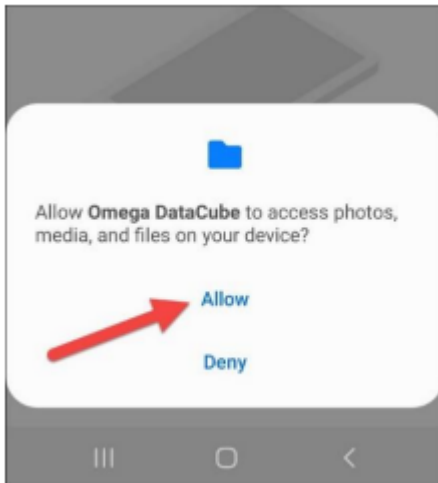
Step 5. Once the installation is complete, open the Omega DataCube app.



Step 6. For Android 12 and newer devices, the “All Files Access” settings will open after first starting the Omega DataCube app. Please ensure that it is turned on for the Omega DataCube app. After ensuring it is set to allow, tap the back arrow to continue.



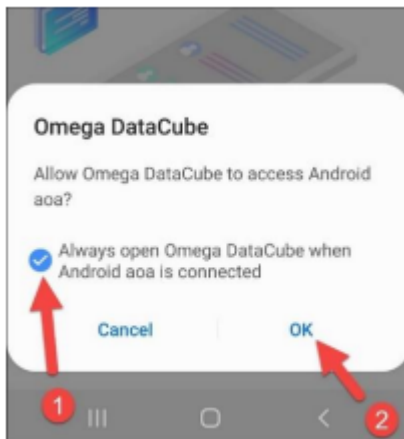
Step 7. When prompted, tap “Allow” to allow the Omega DataCube app to access your photos, media, and files on your device.



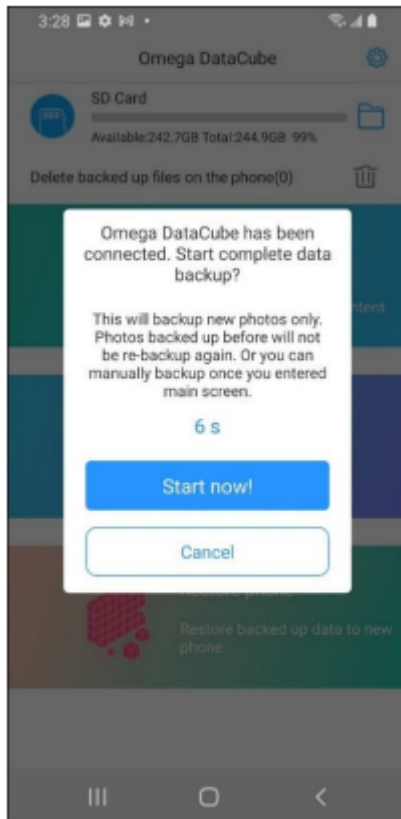
Step 8. If you would like backups to automatically start when you plug your Android device into the Omega DataCube, ensure the checkbox is selected next to “Always open Omega DataCube when Android AOA is connected”. Then tap “OK”.



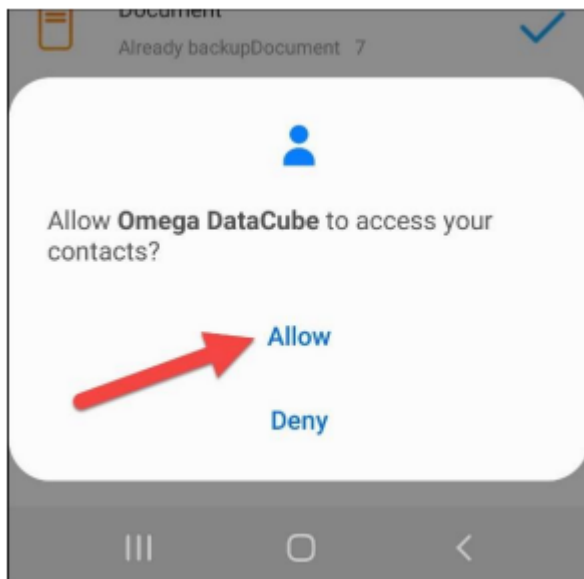
NOTE: If you do not select this option, you will need to manually start a backup after plugging your Android device into the Omega DataCube by opening the Omega DataCube app and then tapping “Phone backup”.



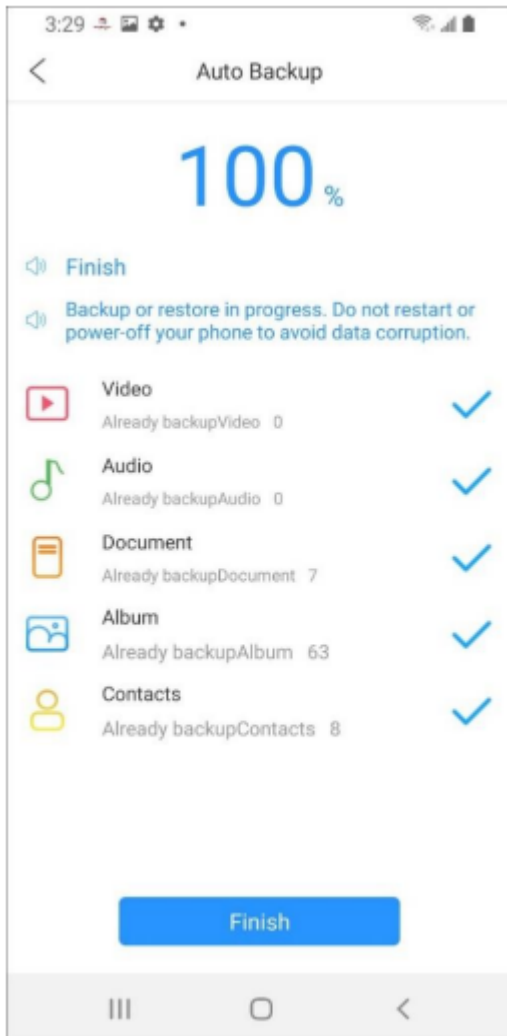
Step 9. A backup will automatically start in 10 seconds, or you can tap “Cancel” to not run a backup at this time.



Step 10. During the first backup, you may be prompted to allow access to your contacts. If you would like the Omega DataCube to back up your contacts, please tap “Allow”.



Step 11. When the backup completes, tap “Finish”.



Starting a Backup

To start a backup, simply plug your device's charging cable into your Android device. Omega DataCube will automatically begin backing up your photos, videos, audio, documents, and contacts when your phone begins charging.



NOTE: The above steps assume you left the Omega DataCube plugged into your phone charger as described in "Setting Up and Attaching Your Omega DataCube" which is recommended.

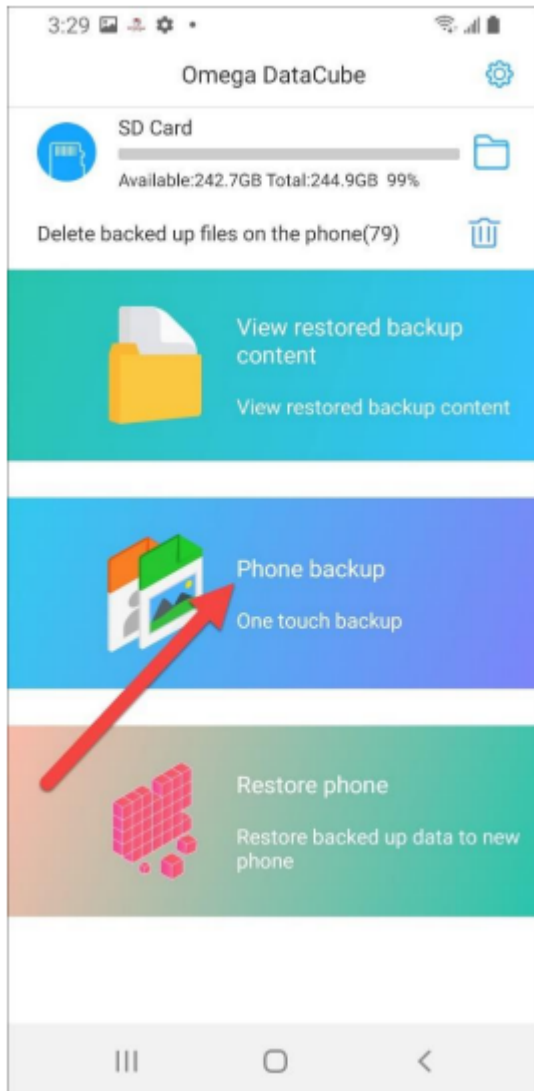
You can also manually start a backup by doing the following:

Step 1. Ensure the Micro SD card is inserted into the Omega DataCube and your Android device is properly attached to the Omega DataCube.

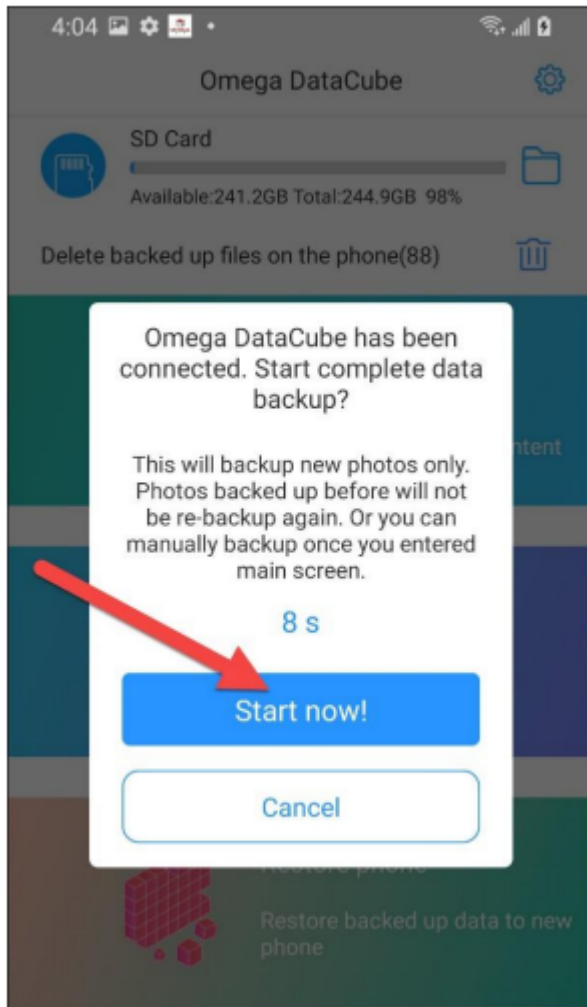
**See the [Setting Up and Attaching Your Omega DataCube](#) section for details on how to do this.*

Step 2. Open the Omega DataCube app.

Step 3. Tap on "Phone Backup".



Step 4. Tap “Start now!”



Viewing Files Saved on the Omega DataCube

There Are Two Ways to View the Files Saved to Your Omega Datacube:

Step 1. Plugging the Omega DataCube directly into a USB port on your Windows or Mac computer.

Step 2. Using the Omega DataCube app

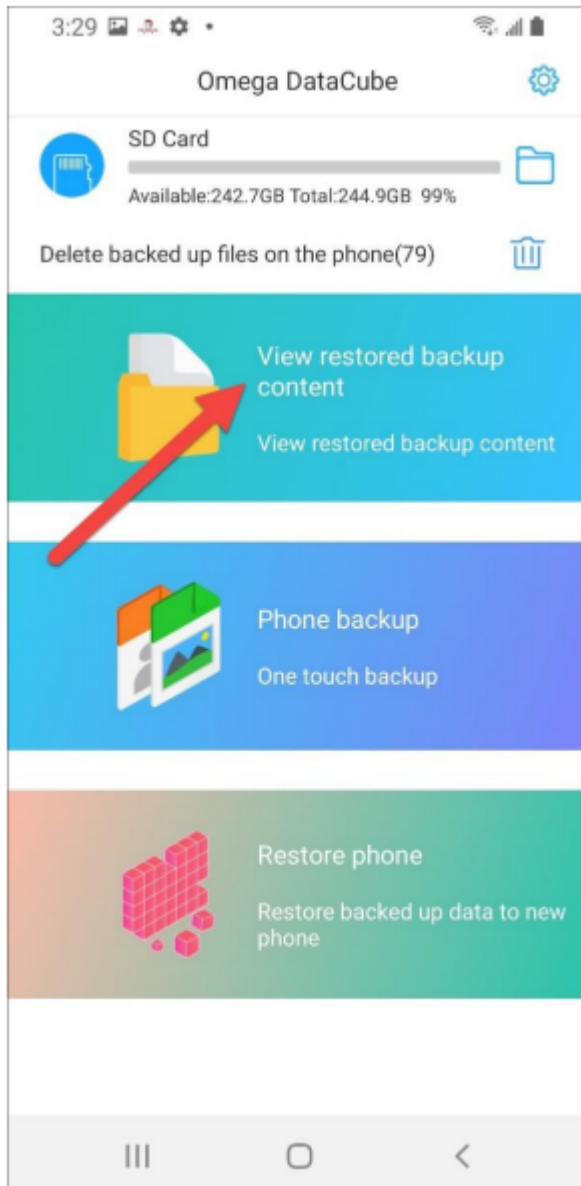
To View and Manage Files Saved on Your Omega Datacube With the Omega Datacube App, Complete the Following Steps:

Step 1. Ensure the Micro SD card is inserted into the Omega DataCube and your Android device is properly attached to the Omega DataCube.

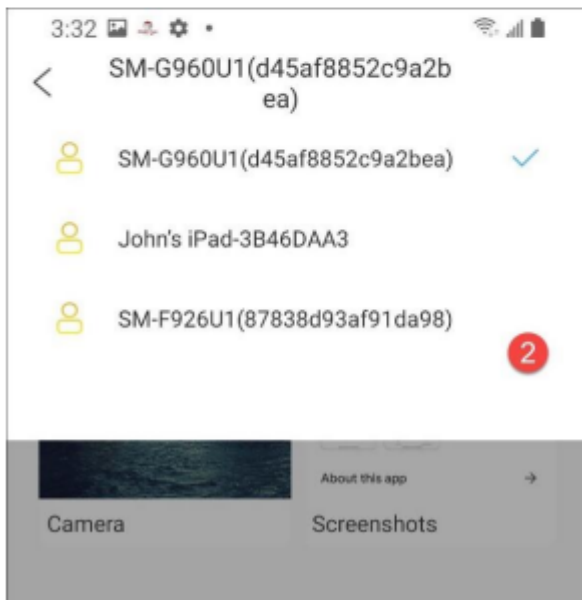
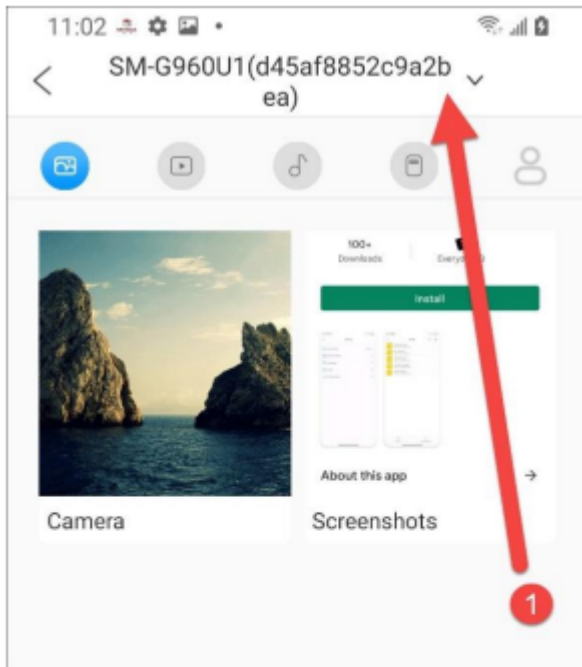
**See the [Setting Up and Attaching Your Omega DataCube](#) section for details on how to do this.*

Step 2. Open the Omega DataCube app.

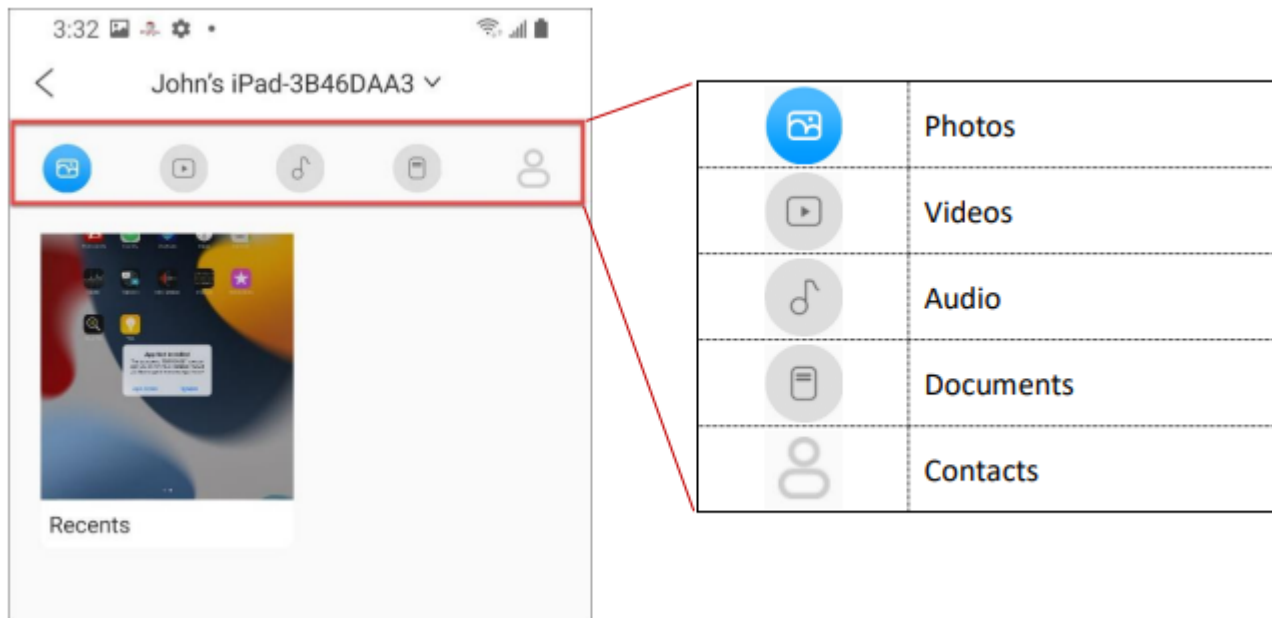
Step 3. Tap on “View restored backup content”



Step 4. You can view files backed up from any device by choosing the device at the top.



Step 5. Then, choose to view which type of file – i.e. photos, videos, audio, documents, and contacts.



Step 6. Easily browse and view your saved files.

Restoring Files from your Omega DataCube

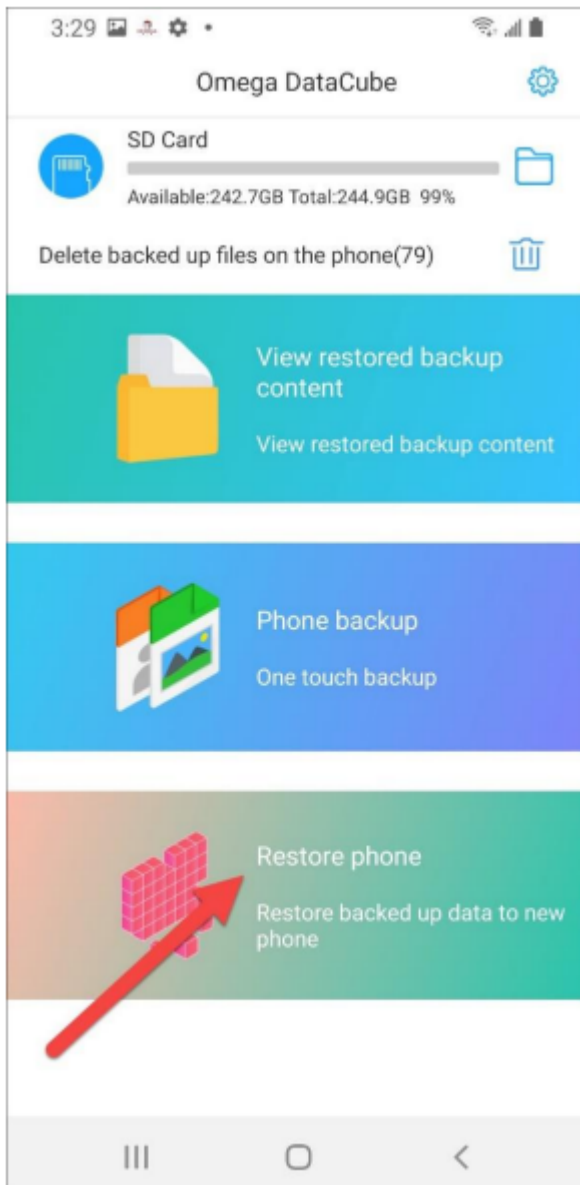
To Restore Files From Your Omega Datacube to Your Device, Complete the Following Steps:

Step 1. Ensure the Micro SD card is inserted into the Omega DataCube and your Android device is properly attached to the Omega DataCube.

*See the [Setting Up and Attaching Your Omega DataCube](#) section for details on how to do this.

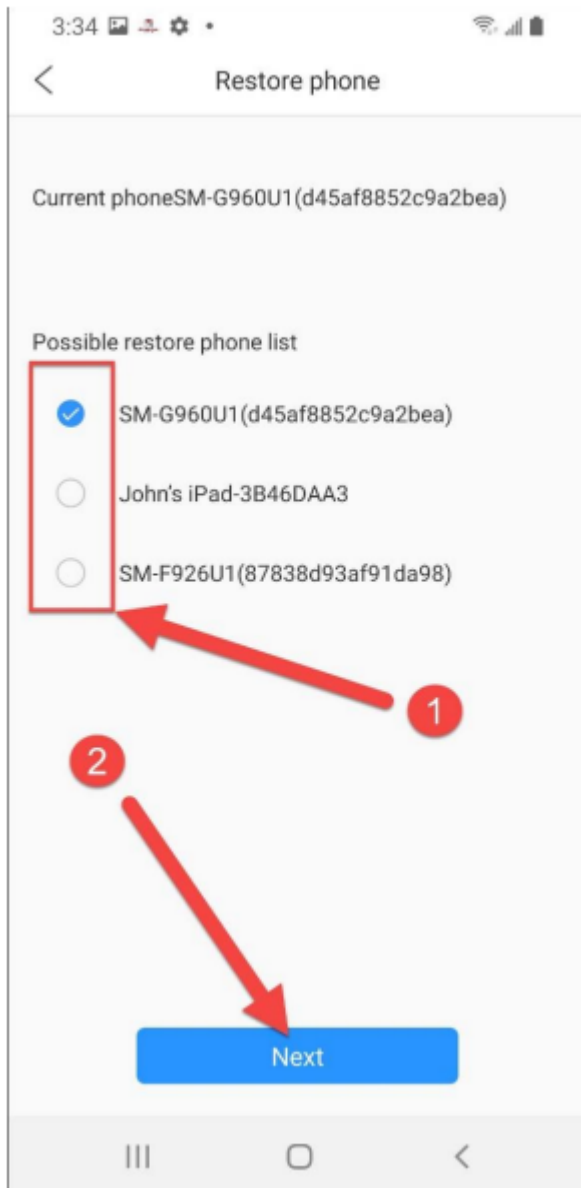
Step 2. Open the Omega DataCube app.

Step 3. Tap on “Restore phone”

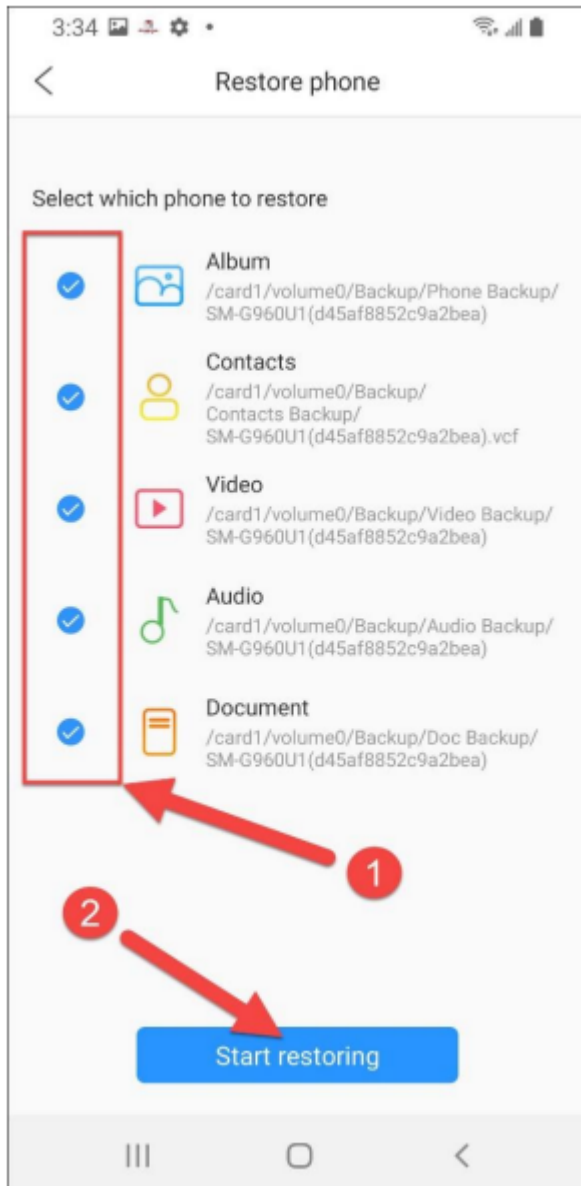


Step 4. Select from a list of devices that have been backed up to the Omega DataCube, then tap “Next”.

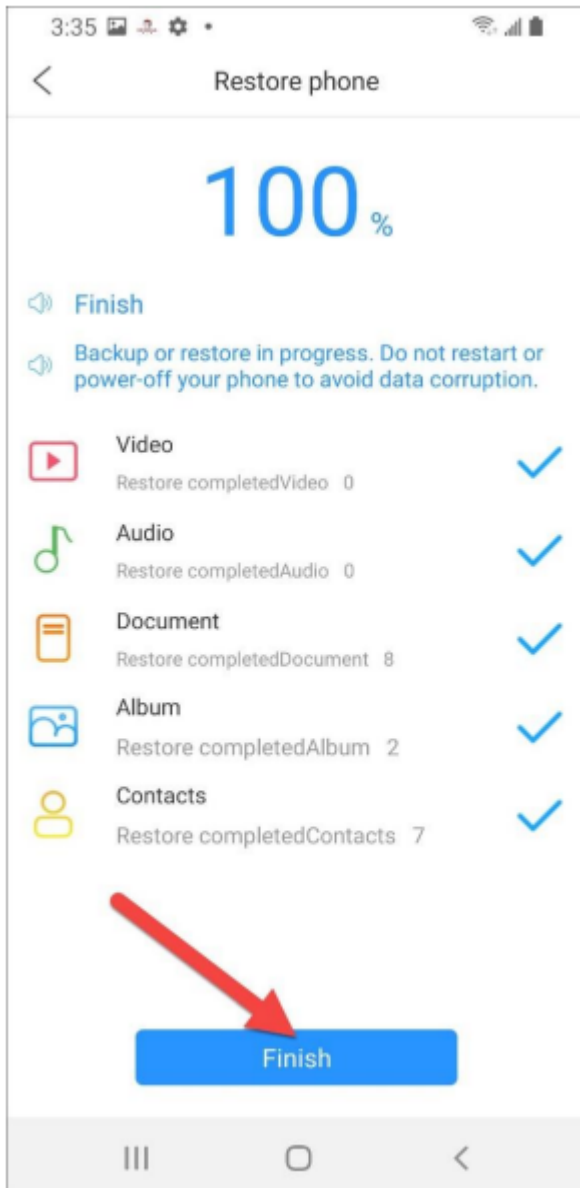
NOTE: In this example, three different devices were backed up to this Omega DataCube (2 Android phones and an iPad).



Step 5. Select which item type you would like to restore – i.e. Photo Albums, Contacts, Video, Audio, or Documents. Then, tap “Start restoring”.



Step 6. When the restore is complete, tap “Finish”.



Customizing Backup Settings

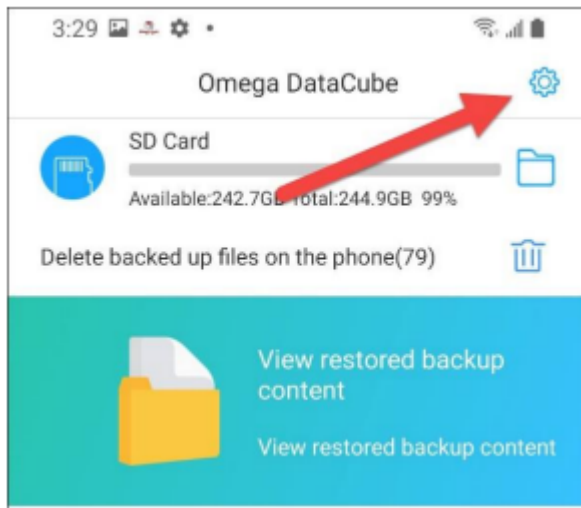
To Turn On or Off the Auto Backup Feature as Well as Change Backup Settings, Complete the Following Steps:

Step 1. Ensure the Micro SD card is inserted into the Omega DataCube and your Android device is properly attached to the Omega DataCube.

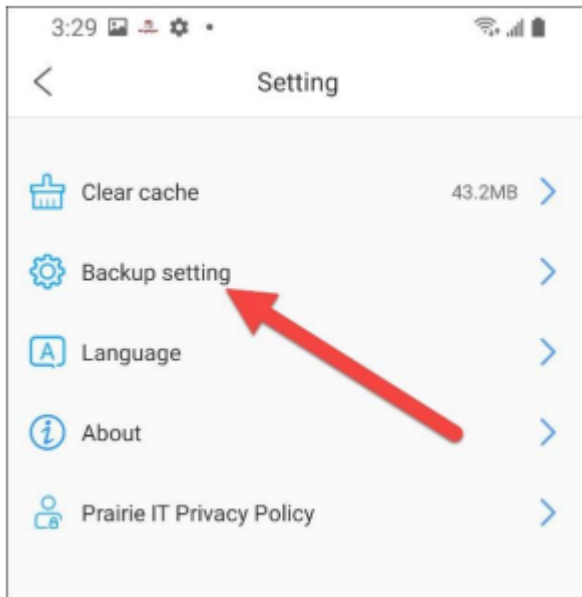
*See the [Setting Up and Attaching Your Omega DataCube](#) section for details on how to do this.

Step 2. Open the Omega DataCube app.

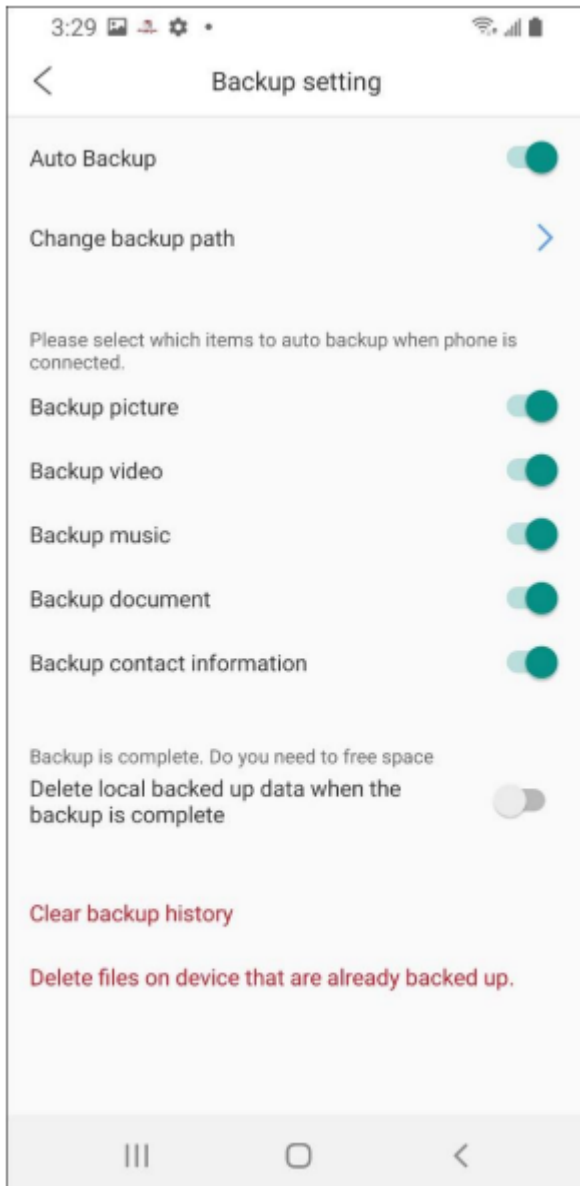
Step 3. Tap on the Settings icon in the upper right-hand corner



Step 4. Tap "Backup Setting".



Step 5. Adjust any setting to what you want to use, then tap the back button twice to go back to the main menu.



Using the Omega DataCube with iOS (iPhone/iPad) Devices

Please Choose a Topic:

[Installing and Running the Omega DataCube App for the First Time](#)

[Starting a Backup](#)

[Viewing Files Saved on the Omega DataCube](#)

[Restoring Files from your Omega DataCube](#)

[Customizing Backup Settings](#)

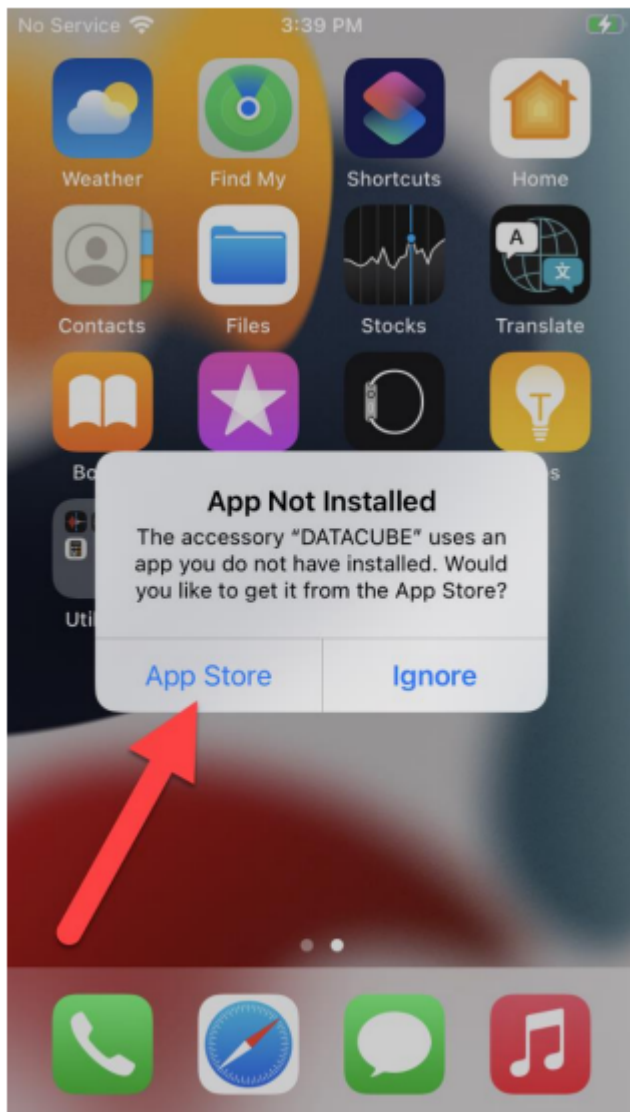
Installing and Running the Omega DataCube App for the First Time

To Install the Omega Datacube App and Start Your First Backup, Complete the Following Steps:

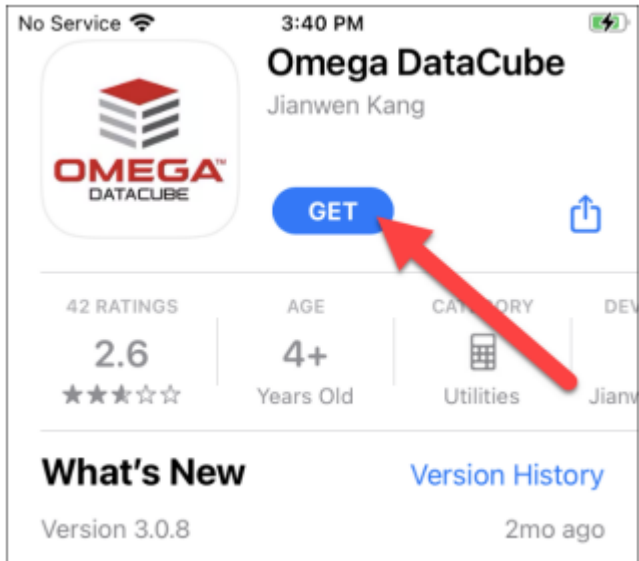
Step 1. Ensure the Micro SD card is inserted into the Omega DataCube and your iPhone or iPad is properly attached to the Omega DataCube.

**See the [Setting Up and Attaching Your Omega DataCube](#) section for details on how to do this.*

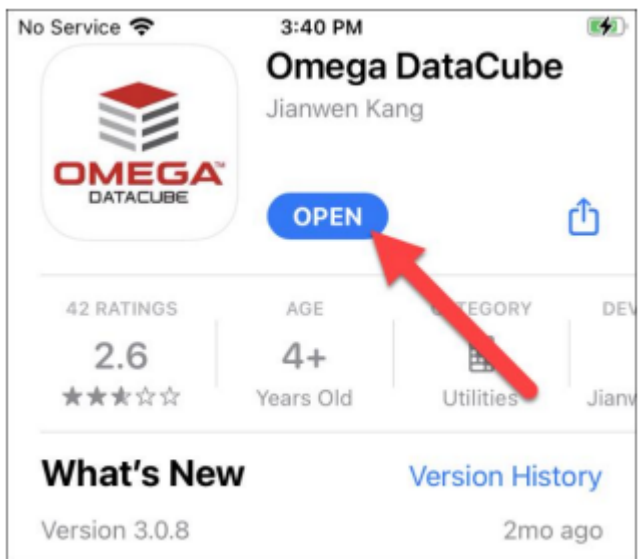
Step 2. The first time you plug the Omega DataCube into your iPhone or iPad, you will be prompted to install the app from the App Store. Tap on “App Store”. NOTE: If you are not prompted with the message, simply go to the App Store and search for “Omega DataCube”.



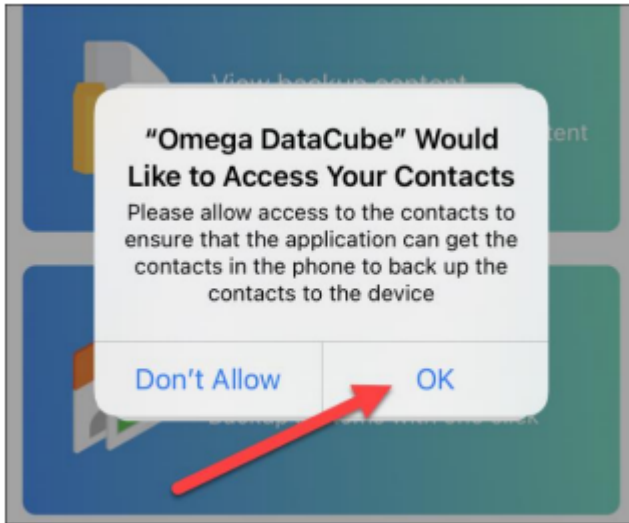
Step 3. Tap “Get” to install the app.



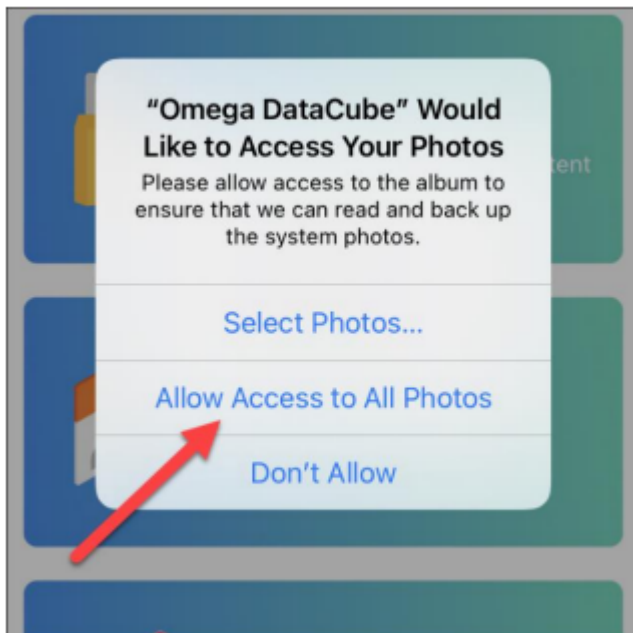
Step 4. Once the installation is complete, open the Omega DataCube app.



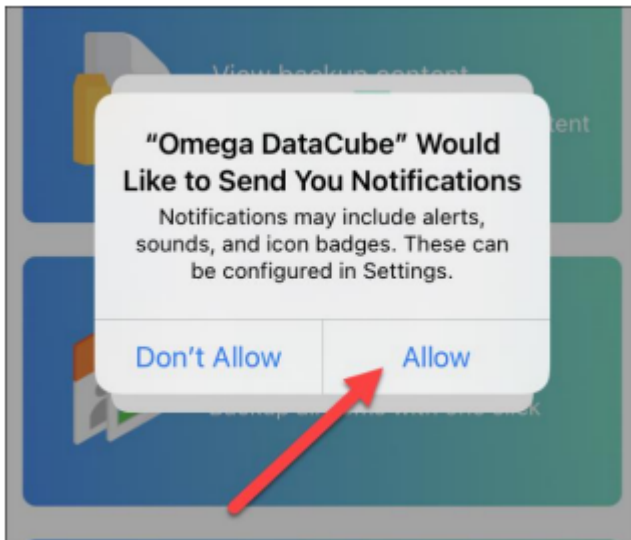
Step 5. When prompted, tap “OK” to allow the Omega DataCube app to access your contacts.



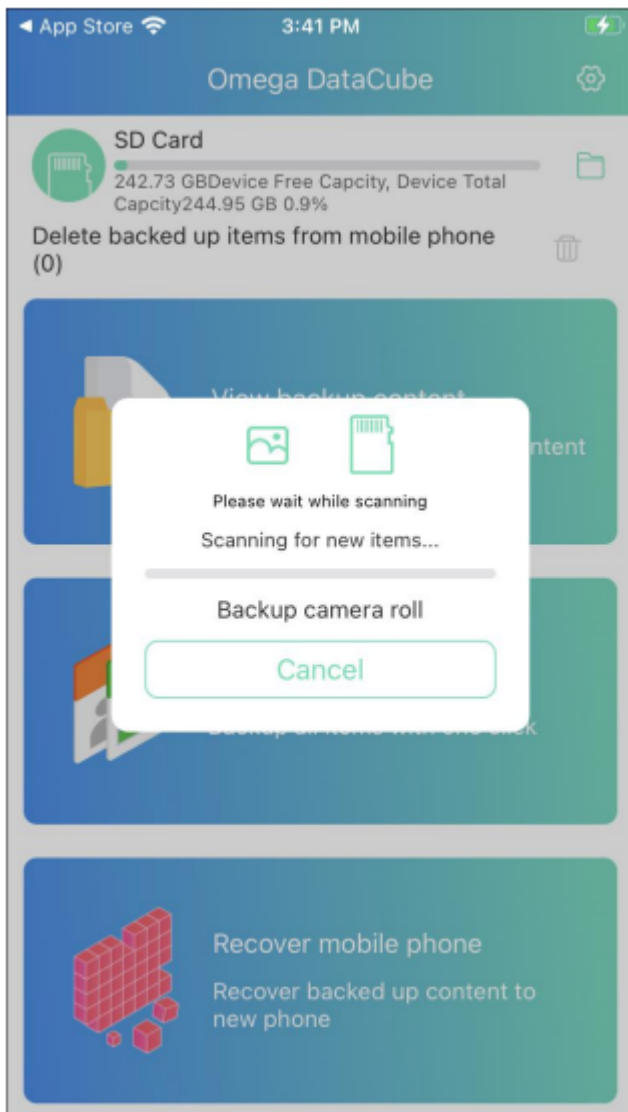
Step 6. When prompted, tap “Allow Access to All Photos” to allow the Omega DataCube app to access your photos and videos.



Step 7. When prompted, tap “Allow” to allow the Omega DataCube app to send you notifications. This is needed to automatically start your backups when you plug your iPhone or iPad into the Omega DataCube.



Step 8. A backup will automatically start at this point. You can tap “Cancel” to not run a backup at this time.



Step 9. When the backup completes, tap “OK”.

Starting a Backup

To start a backup, simply plug your iPhone/iPad charging cable into your iPhone or iPad. Omega DataCube will automatically begin backing up your photos, videos, and contacts when your iPhone or iPad begins charging.



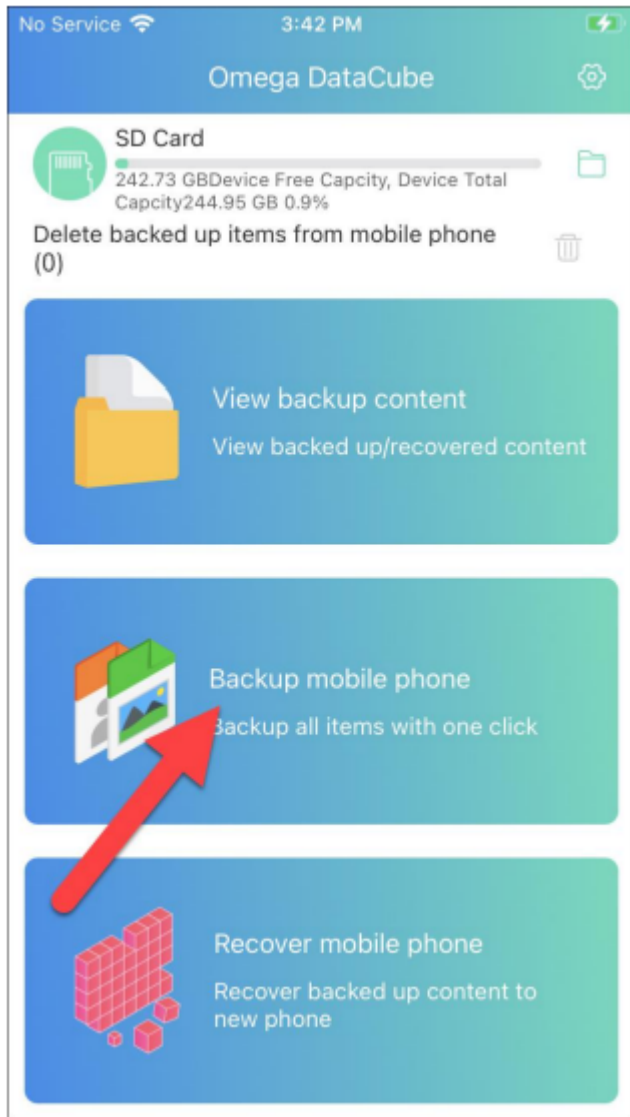
NOTE: The above steps assume you left the Omega DataCube plugged into your phone charger as described in “Setting Up and Attaching Your Omega DataCube” which is recommended.

Step 1. Ensure the Micro SD card is inserted into the Omega DataCube and your iPhone or iPad is properly attached to the Omega DataCube.

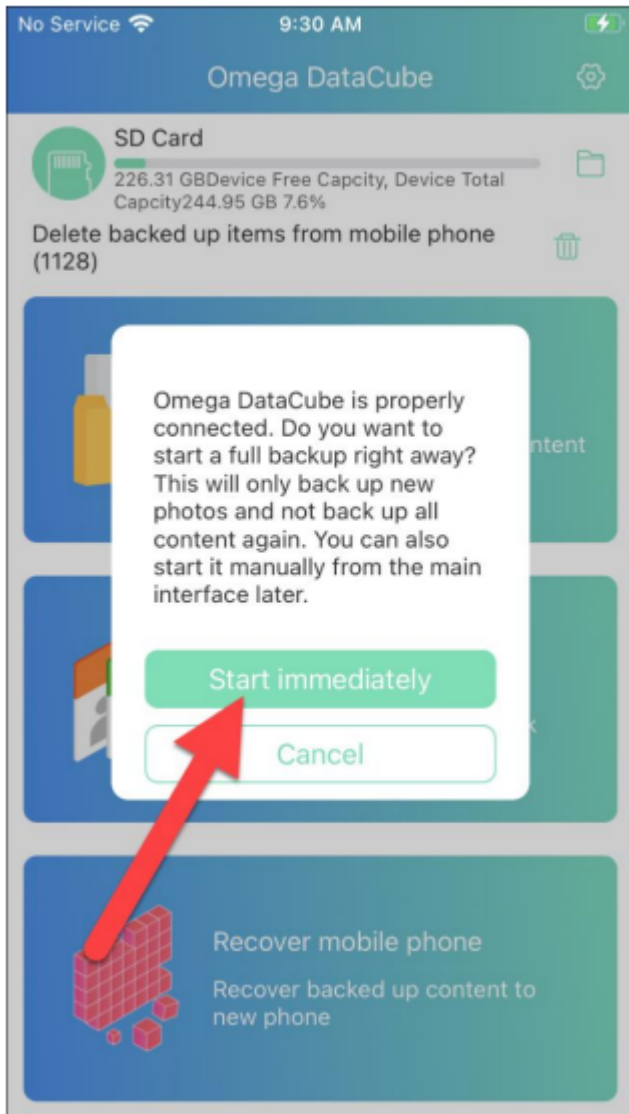
**See the [Setting Up and Attaching Your Omega DataCube](#) section for details on how to do this.*

Step 2. Open the Omega DataCube app.

Step 3. Tap on “Backup mobile phone”.



Step 4. Tap on "Start immediately".



Viewing Files Saved on the Omega DataCube

There Are Two Ways to View the Files Saved to Your Omega Datacube:

Step 1. Plugging the Omega DataCube directly into a USB port on your Windows or Mac computer.

Step 2. Using the Omega DataCube app

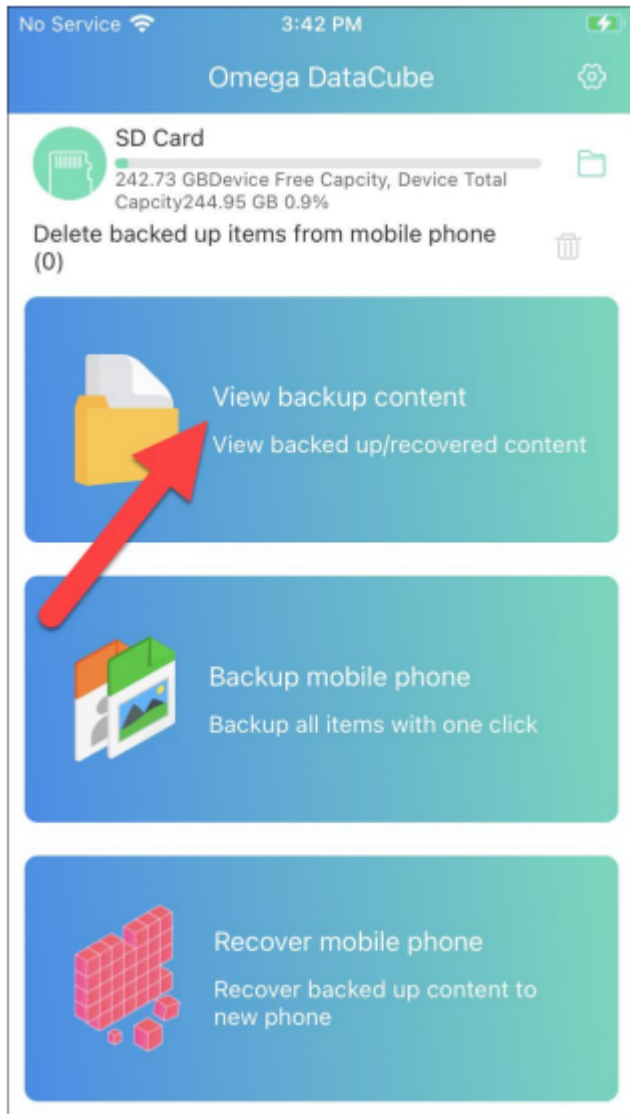
To View and Manage Files Saved on Your Omega Datacube With the Omega Datacube App, Complete the Following Steps:

Step 1. Ensure the Micro SD card is inserted into the Omega DataCube and your iPhone or iPad is properly attached to the Omega DataCube.

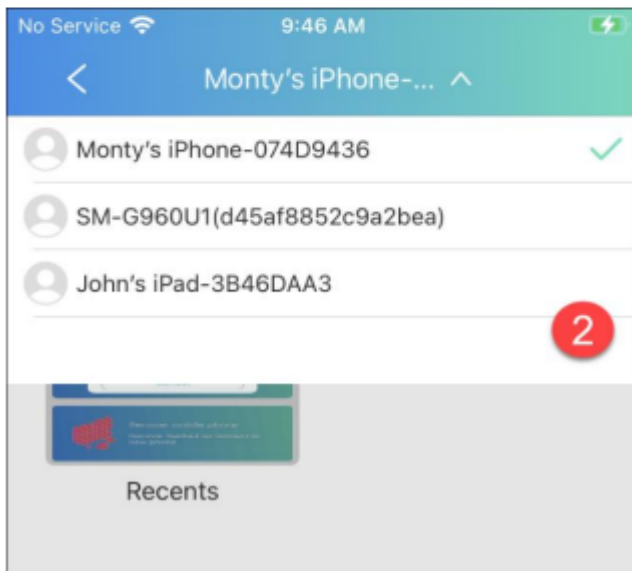
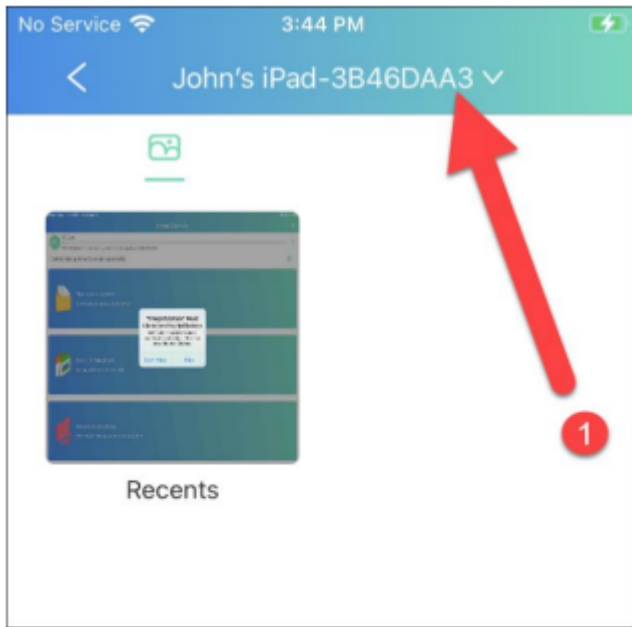
**See the [Setting Up and Attaching Your Omega DataCube](#) section for details on how to do this.*

Step 2. Open the Omega DataCube app.

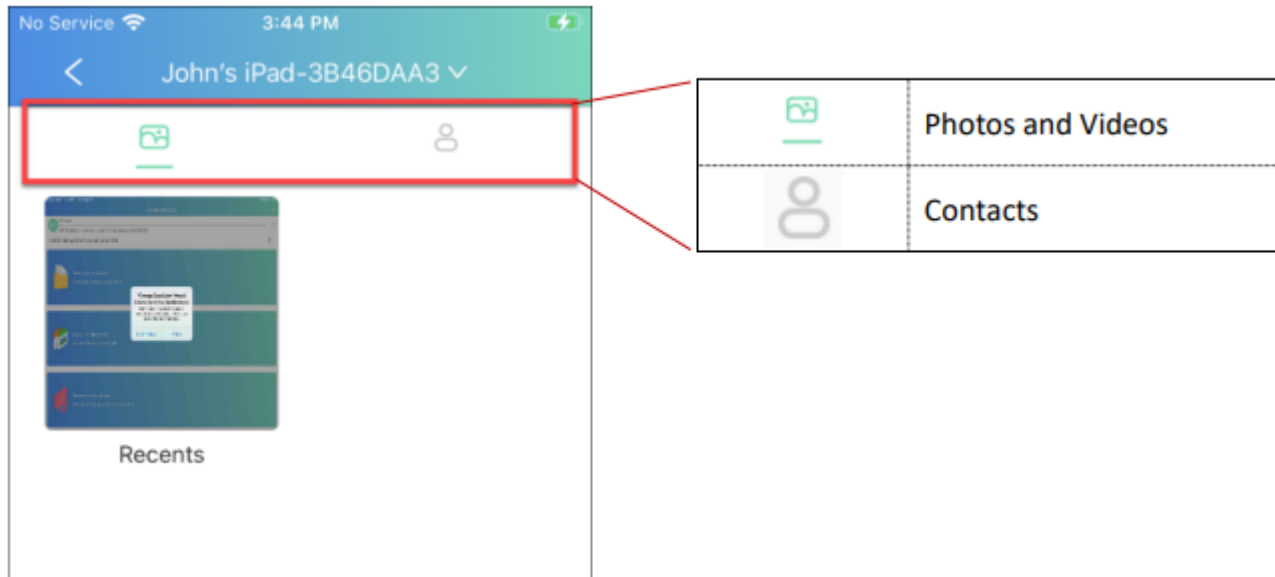
Step 3. Tap on “View backup content”



Step 4. You can view files backed up from any device by choosing the device at the top.



Step 5. Then, choose to view which type of files – i.e. photos/videos, contacts.



Step 6. Browse and view the saved files.

Restoring Files from your Omega DataCube

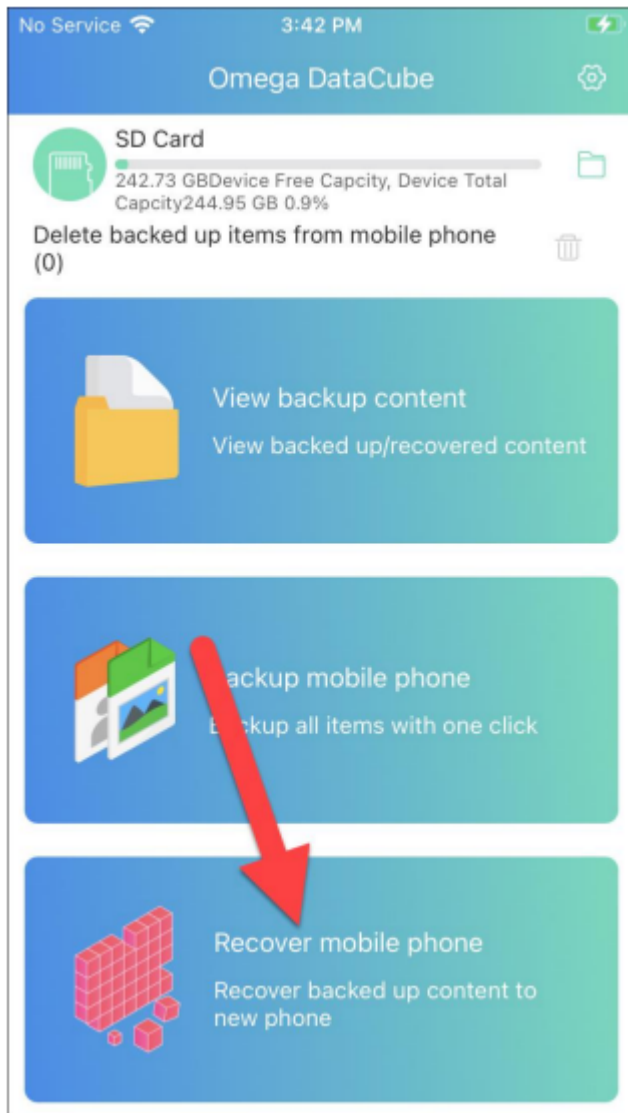
To Restore Files From Your Omega Datacube to Your Device, Complete the Following Steps:

Step 1. Ensure the Micro SD card is inserted into the Omega DataCube and your iPhone or iPad is properly attached to the Omega DataCube.

*See the [Setting Up and Attaching Your Omega DataCube](#) section for details on how to do this.

Step 2. Open the Omega DataCube app.

Step 3. Tap on “Recover mobile phone”

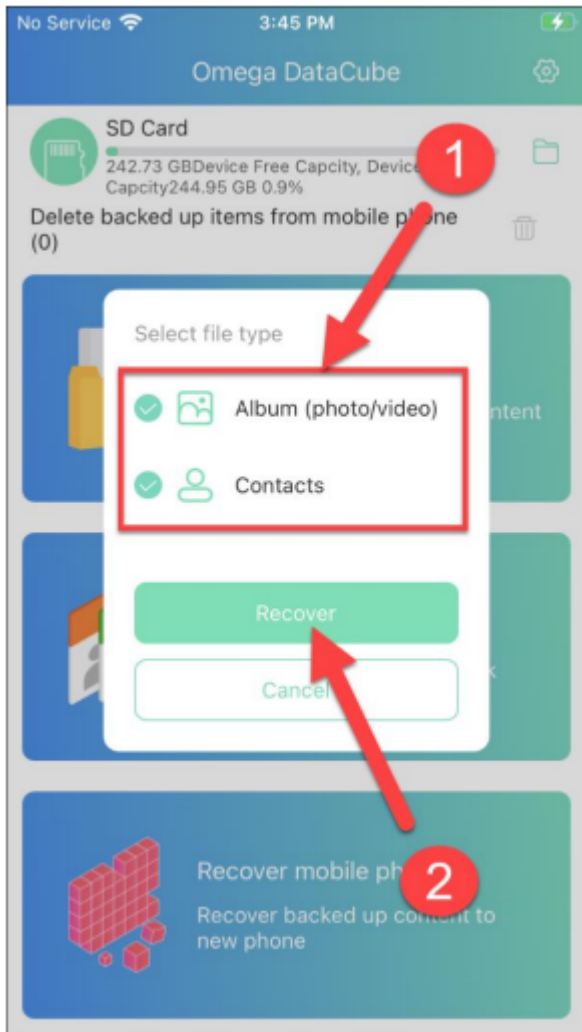


Step 4. Select from a list of devices that have been backed up to the Omega DataCube, then tap “Next”.

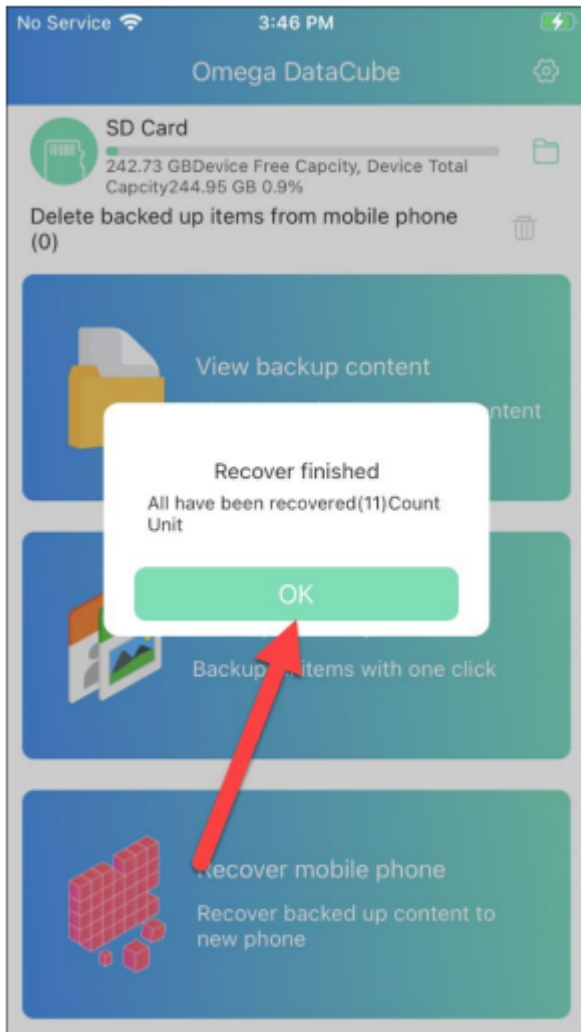
NOTE: In this example, three different devices were backed up to this Omega DataCube (2 Android phones and an iPad).



Step 5. Select which item type you would like to restore – i.e. Album (photos/video) and/or Contacts. Then, tap “Recover”.



Step 6. When the restore is complete, tap “OK”



Customizing Backup Settings

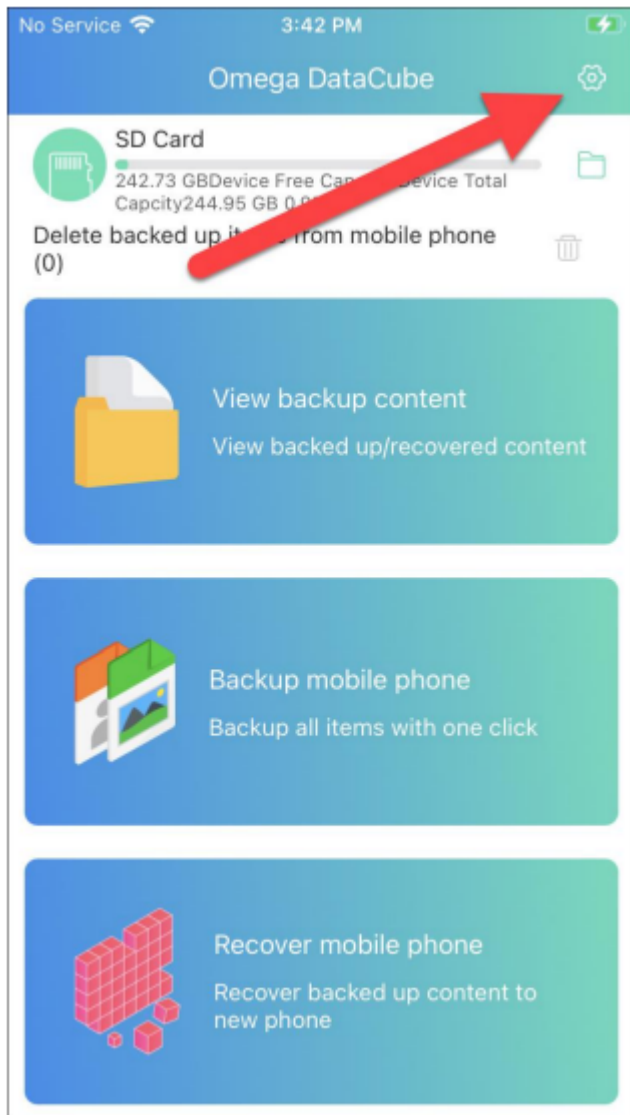
To Turn On or Off the Auto Backup Feature as Well as Change Backup Settings, Complete the Following Steps:

Step 1. Ensure the Micro SD card is inserted into the Omega DataCube and your iPhone or iPad is properly attached to the Omega DataCube.

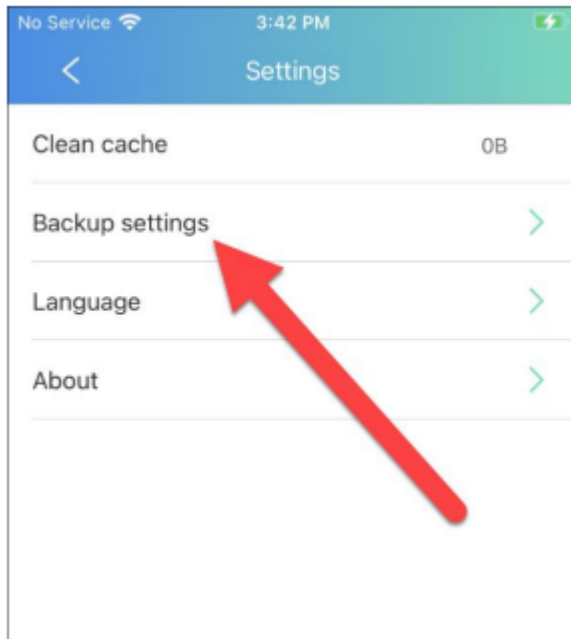
*See the [Setting Up and Attaching Your Omega DataCube](#) section for details on how to do this.

Step 2. Open the Omega DataCube app.

Step 3. Tap on the Settings icon in the upper right-hand corner.



Step 4. Tap "Backup Setting".



Step 5. Adjust any setting to what you want to use, then tap the back button twice to go back to the main menu.

