



Orchid Fusion VMS Installation Guide

2.12 — Last update: Sep 22, 2020

IPConfigure

Table of Contents

About the Orchid Fusion VMS Installation Guide	1
Working in Windows	2
Installing Orchid Fusion VMS in Windows	3
How to Edit a Configuration File in Windows	7
How to Manage the Orchid Fusion VMS Service in Windows	10
Uninstalling Orchid Fusion VMS for Windows.....	12
Working in Ubuntu 14.04.....	13
Installing Orchid Fusion VMS on Ubuntu 14.04 LTS	14
How to Edit a Configuration File in Ubuntu 14.04 LTS	21
How to Manage the Orchid Fusion VMS Service in Ubuntu 14.04 LTS	24
Uninstalling Orchid Fusion VMS in Ubuntu 14.04	27
Working in Ubuntu 16.04 to 20.04.....	28
Installing Orchid Fusion VMS on Ubuntu 16.04 to 20.04.....	29
How to Edit a Configuration File in Ubuntu 16.04 to 20.04.....	36
How to Manage the Orchid Fusion VMS Service Through the Command Line	39
Uninstalling Orchid Fusion VMS in Ubuntu 16.04 to 20.04.....	41
Working in Red Hat	42
Installing Orchid Fusion VMS in Red Hat Enterprise Linux 7	43
How to Edit a Configuration File in Red Hat	47
How to Manage the Orchid Fusion VMS Service in Red Hat.....	49
Post-Installation Steps in Red Hat.....	51
Uninstalling the Orchid Fusion VMS Package in Red Hat.....	52
Installation Support Topics	53
Orchid Fusion VMS Configuration Settings.....	54
Java Versions Required for Orchid Fusion VMS	59
How to Edit the Java Options File in Linux	60
Orchid Fusion VMS Firewall/Ports Configuration	62
Enabling Google Authentication	64
Enabling Active Directory	66
Enabling Azure Active Directory	68
Detailed Steps for Configuring Azure Active Directory.....	70
Enabling FreeIPA Authentication.....	81
Orchid Fusion VMS APPs	82
Creating a Superuser	84
Linux Tips & Tricks.....	86
Important Directories and Files	88

About the Orchid Fusion VMS Installation Guide

The Orchid Fusion VMS Installation Guide is designed for IPConfigure dealers, integrators, or system administrators who are tasked with software installation. In addition to installation instructions, this guide provides assistance with editing configuration files, working with the Orchid Fusion VMS service, and uninstalling the Orchid Fusion VMS software.

This guide covers Orchid Fusion VMS installation and configuration topics for the following operating systems:

- Windows
- Ubuntu 14.04 LTS
- Ubuntu 16.04 to 20.04 (LTS versions) (Refer to Ubuntu 16.04 LTS)
- Red Hat Enterprise Linux 7 and 8, 64-bit (Refer to Red Hat Enterprise Linux 7)
- CentOS 7 and 8 (Refer to Red Hat Enterprise Linux 7)
- Debian Jessie (Refer to Ubuntu 16.04 LTS)
- Raspbian Jessie (Refer to Ubuntu 16.04 LTS)

This guide also includes general, helpful information in the *Installation Support Topics* section.



Downgrading the Orchid Fusion VMS software is not supported.

Working in Windows

IPConfigure distributes a single Windows installer that is valid for all 64-bit versions of Windows 7 and up, as well as 64-bit Windows Server 2008 R2 and up.

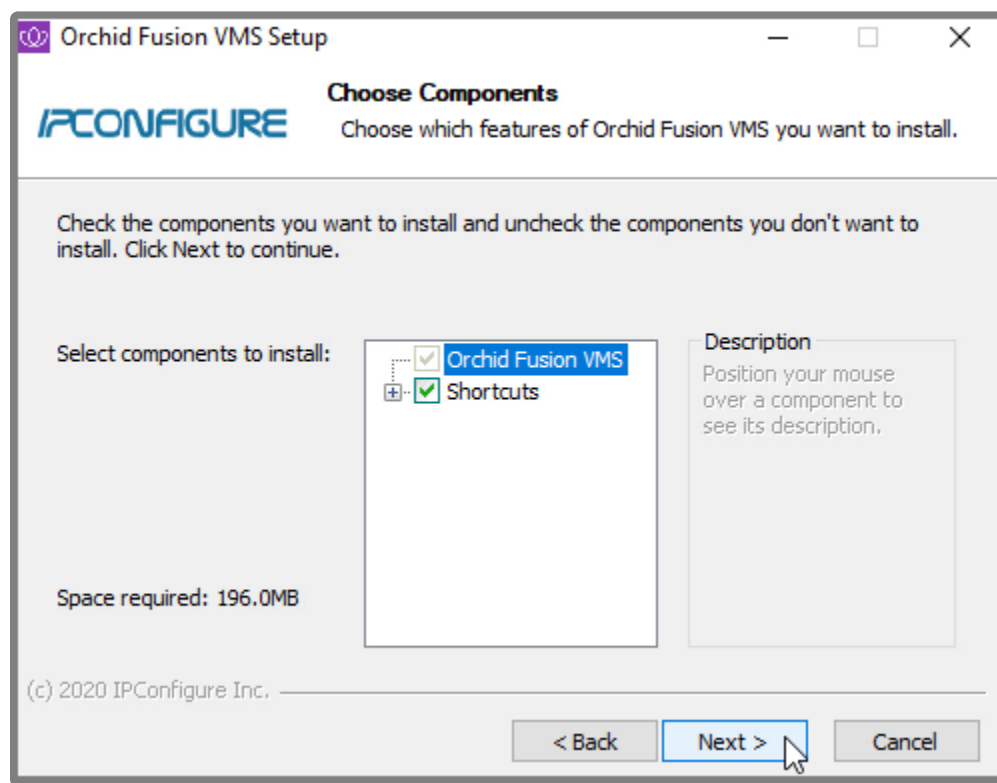
* Orchid Fusion VMS can only be installed on a 64-bit operating system; it is not compatible with 32-bit operating systems.

* You must sign in to the computer as a user with administrative privileges.

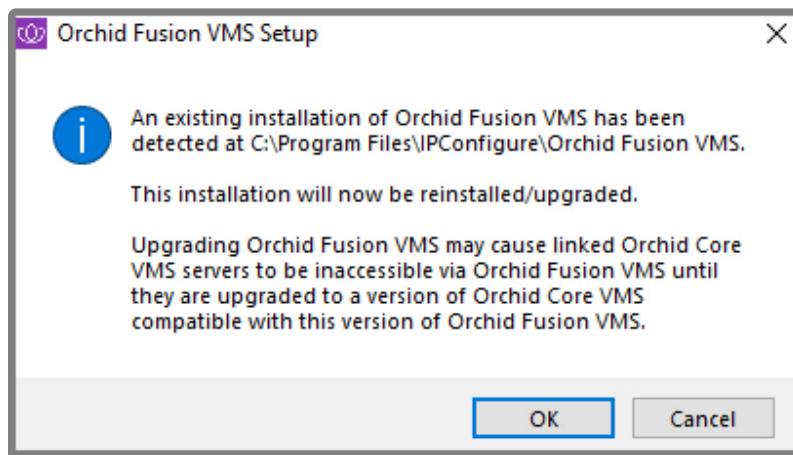
* Beginning with Orchid Fusion VMS version 2.10.0, if you are performing an upgrade of your Orchid Fusion VMS, you should check to make sure that all of the registered Orchid Core VMS servers are running, at minimum, Orchid Core VMS version 2.8.0. (You will receive a warning message during the installation if this is not the case.)

Installing Orchid Fusion VMS in Windows

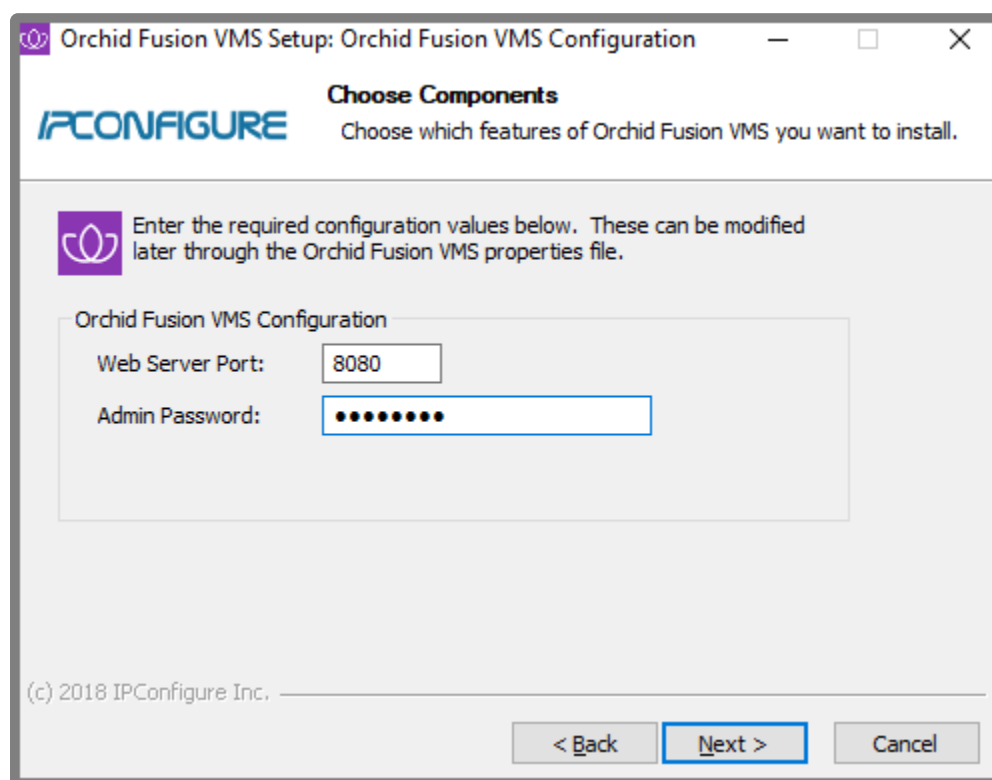
1. Download the Orchid Fusion VMS executable file. You can find the latest version of the Orchid Fusion VMS on IPConfigure's website at <http://www.ipconfigure.com/products/fusion#download>.
2. Open the Orchid Fusion VMS executable file. You will be asked to allow the installer to make changes to your computer. Click **Yes** to allow the installer to open.
3. Before proceeding with the installation, close all other applications, then click **Next** to continue.
4. You will be asked to accept the End-User License Agreement. After reading the agreement, click the **I Agree** button to accept it.
5. You will be asked to select the components you want to install. *Orchid Fusion* and *Shortcuts* will already be checked.



- Orchid Fusion VMS: This is the Orchid Fusion VMS application.
 - Shortcuts: This installs shortcuts on the computer to open the Orchid Fusion VMS user interface in a web browser.
6. Click the **Next** button to proceed with the installation for all selected components.
 7. Beginning with Orchid Fusion VMS version 2.4.0, if you are performing an upgrade of your Orchid Fusion VMS, the installer will check the Orchid Core VMS version numbers on each of the registered Orchid Core VMS servers. Starting in Orchid Fusion VMS version 2.10, if any of the registered servers have an Orchid Core VMS version number older than 2.8.0, you will receive a warning message similar to the one pictured below.

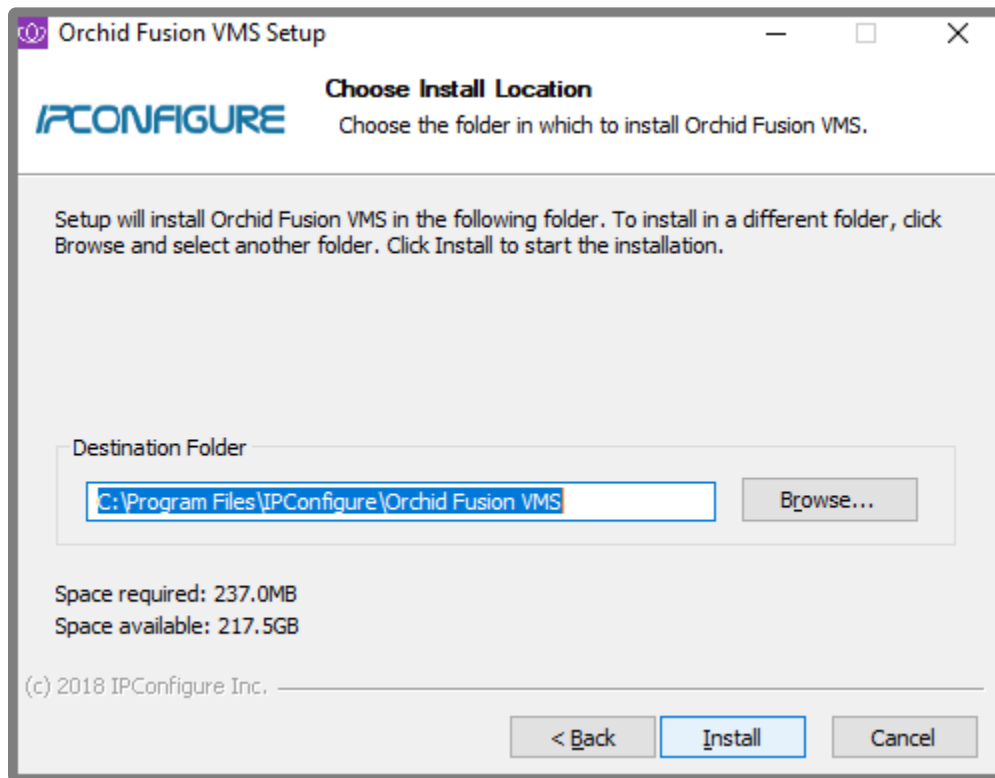


- You will need to upgrade older Orchid Core VMS servers before they will work in this new version of Orchid Fusion VMS.
 - Click the **OK** button to acknowledge this warning. The software installation will begin. (Proceed to step 12.)
8. If this is a first-time installation, the installer will ask you to set the Web Server Port and the Admin Password.

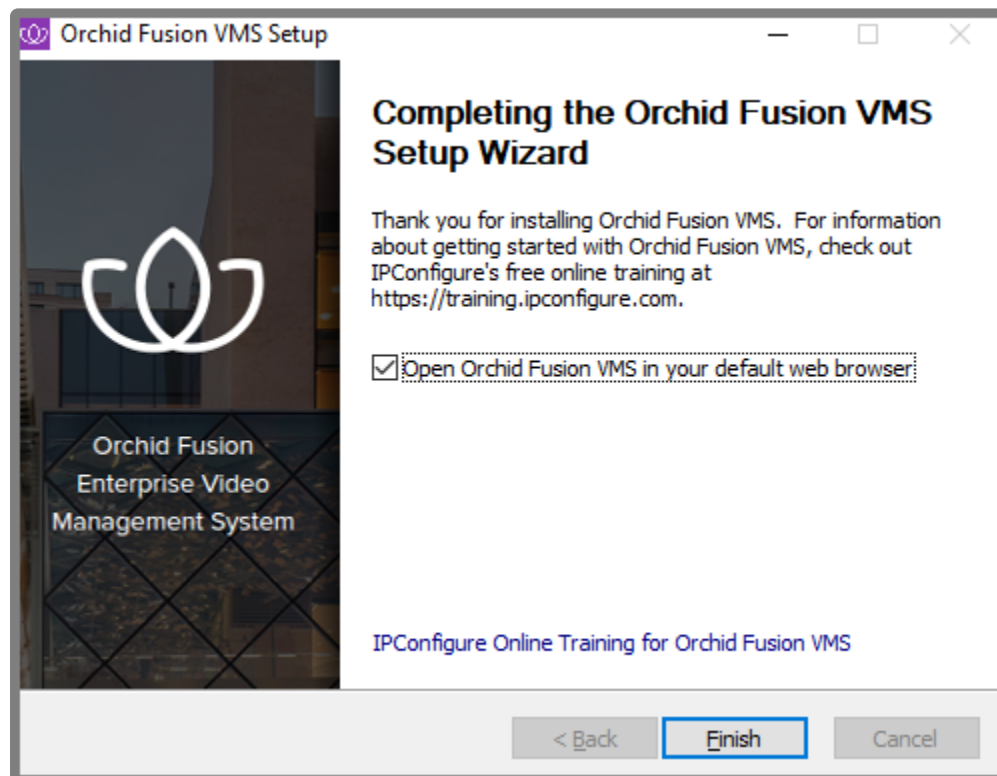


- By default, the web server port is set to port 8080 (recommended for most installations). Update the port number only if Orchid Fusion VMS needs to use a port other than 8080.
 - Enter the password you would like to set for the default admin account in the *Admin Password* field.
9. Click the **Next** button to continue.

10. The installer will ask you to confirm the installation folder. By default this is *C:\Program Files\IPConfigure\Orchid Fusion VMS* and does not need to be changed. However, the installation directory can be updated, if needed.



11. Click the **Install** button to proceed with the installation. The installation will complete automatically without any additional prompts. This process may take a few minutes.
12. Once the installer says "Completing" at the top of the window, mark the *Open Orchid Fusion...* checkbox if you want to open Orchid Fusion VMS in your default web browser upon exit.



13. Click the **Finish** button to close the installer. Orchid Fusion VMS will automatically open in the computer's default web browser (if so marked). (For more details on signing in, please refer to the *Enabling ...* topics included in the [Installation Support Topics](#) section, and the *Sign In* topic in the [Orchid Fusion VMS Administrator Guide](#).)

How to Edit a Configuration File in Windows

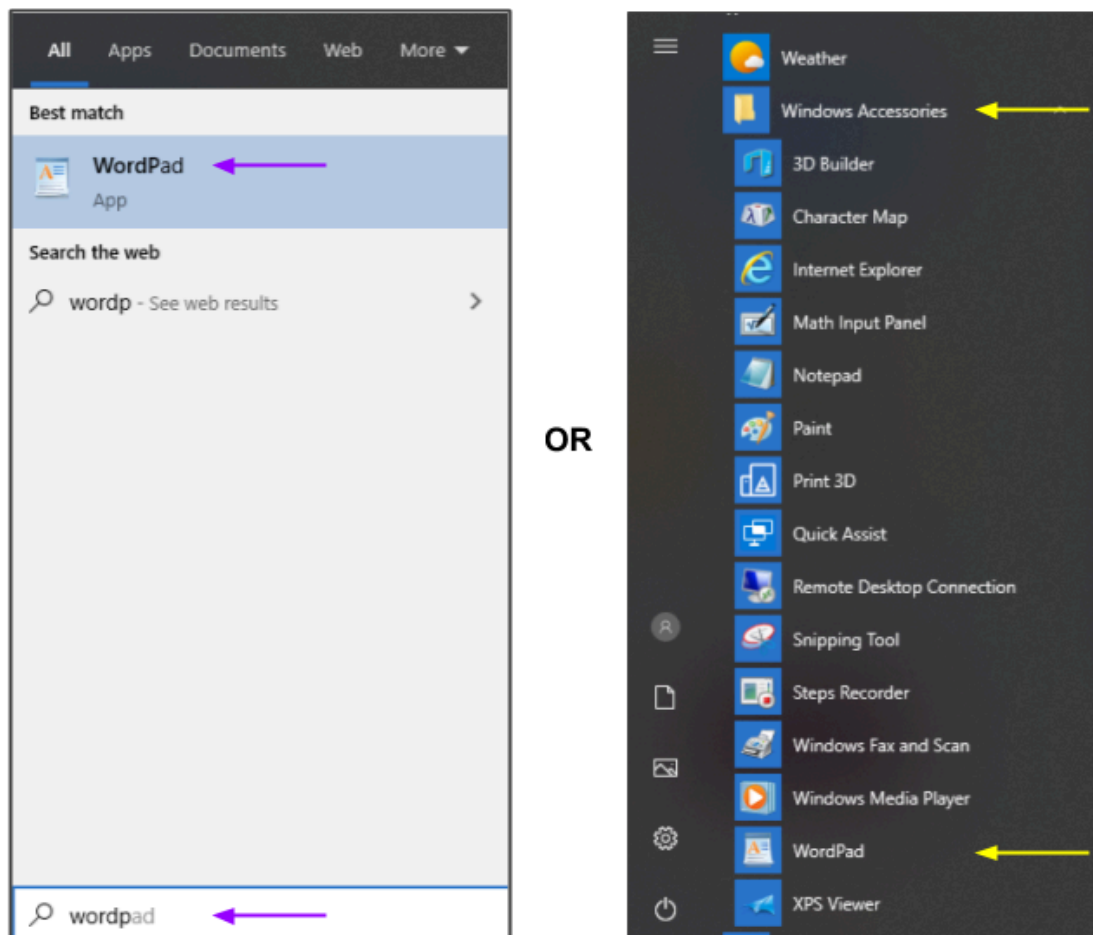
The default location for the Orchid Fusion VMS configuration file in Windows is:

- *C:\Program Files\IPConfigure\Orchid Fusion VMS\conf\fusion.properties*
 - Stores all of the Orchid Fusion VMS default settings and can be used to update things like the Orchid Fusion VMS port number, manually update the admin password, etc.

Refer to the [Installation Support Topics](#) section for a list of available properties.

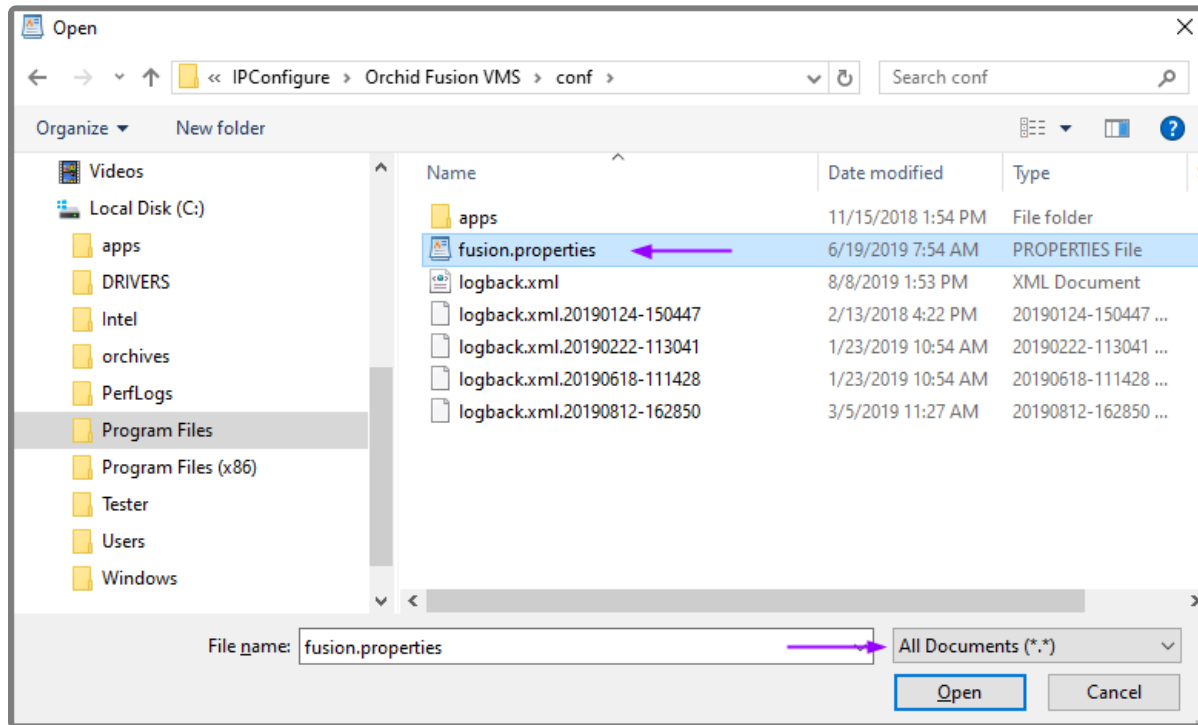
✿ In order to edit the Orchid Fusion VMS configuration file, you will need to be signed in as a user with administrative privileges.

1. Open the Windows Start Menu and type **Wordpad** into the search bar, or go to *Windows Accessories*, then select *WordPad*.

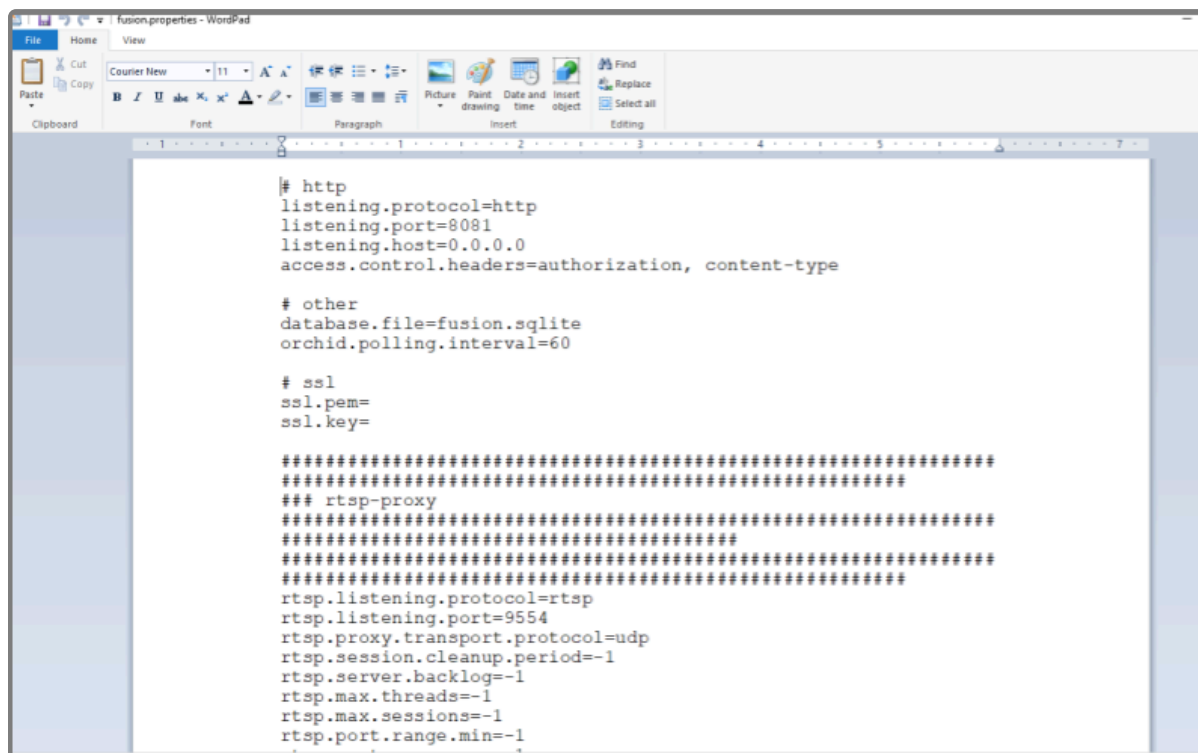


2. Right click on the **WordPad** icon and click Run as administrator.
3. Click the **Yes** button to let WordPad make changes to the computer.
4. Select **File/Open**, then navigate to the *fusion.properties* file. (If no files appear, ensure the *All*

Documents option is selected.)



5. Select the file and click the **Open** button.
6. The file will open in WordPad. Make setting changes as necessary.



7. When you are ready to save the file, select **File/Save** to save the configuration file.
8. You must [restart](#) the Orchid Fusion VMS service in Windows to implement the new settings.

- * Beginning with version 2.10, some of the Orchid Core VMS configuration settings can be edited from within the Orchid Fusion VMS user interface. (This is done using the *Advanced Settings* feature which is explained in the [Orchid Fusion VMS Administrator Guide](#).) To edit the Orchid Core VMS configuration file using standard text editors, please refer to the [Orchid Core VMS Installation Guide](#).

How to Manage the Orchid Fusion VMS Service in Windows

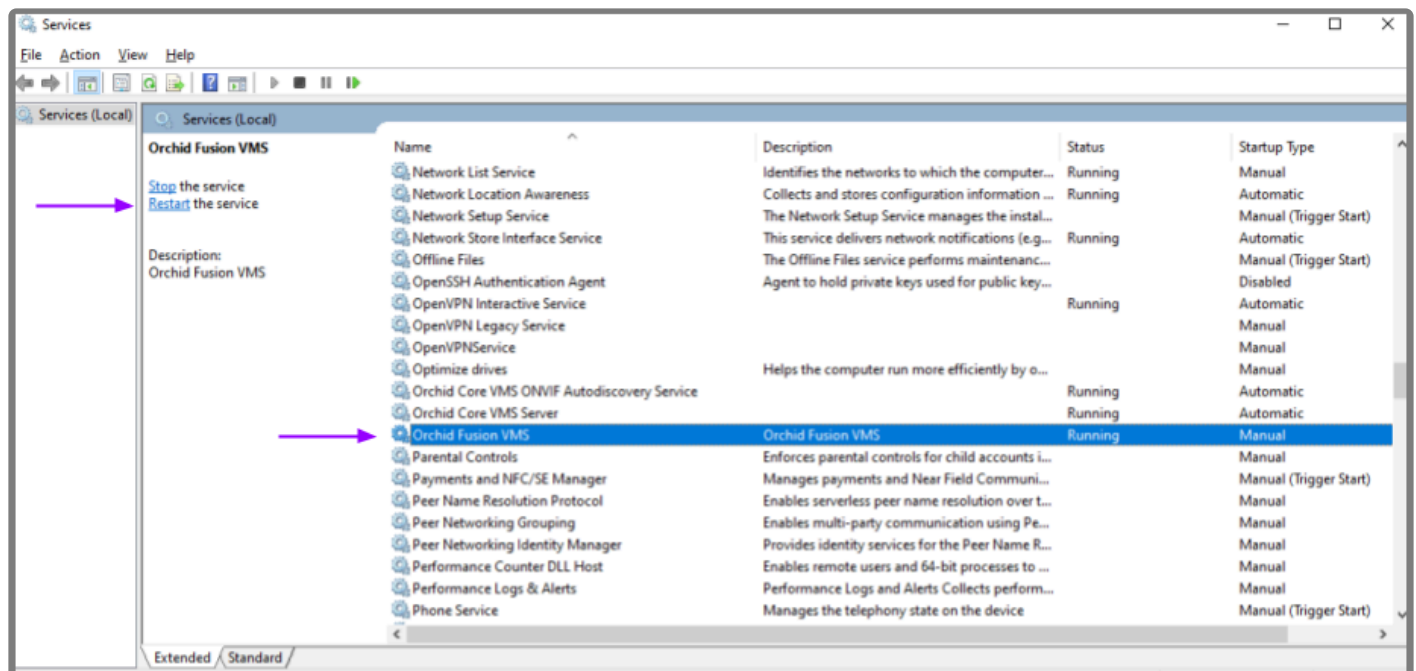
The following service is used by Orchid Fusion VMS in Windows. If you need to check the status, start, or stop the service, you can do this through the *Services Manager* whenever necessary. (You will need to restart the service whenever a change has been made to the Orchid Fusion VMS configuration file.)

- **IPConfigure Fusion:** This service supports the Orchid Fusion VMS server that manages registered Orchid Core VMS servers and provides access to video from those servers.

✿ You must be signed into the computer as a user with administrative privileges in order to use the *Services Manager*.

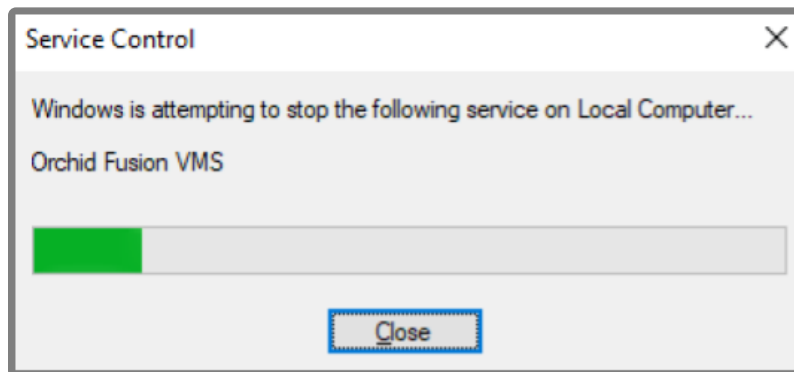
To manage the Orchid Fusion VMS service:

1. Open the Windows Start Menu and type *Services* into the search bar, or go to *Windows Administrative Tools*.
2. Click the **Services** icon to open the *Services Manager*. The *Services Manager* will display a list of all the services setup in Windows.



3. Scroll through the list and click on the *IPConfigure Fusion* service. (Notice that the status of the service will appear in the *Status* column.)
4. Click the **Restart the service** button/link (at the left of the list of services) to restart the service. (Click the **Stop the service** link if you need to stop the service.)

A status window will appear to show the progress of the restart. Once the service has restarted successfully, the software will return to the *Services Manager* window; the *Status* column will indicate that the service is *Running*.



Uninstalling Orchid Fusion VMS for Windows

To remove the Orchid Fusion VMS software, follow the steps below. (This will remove all files installed and created by Orchid Fusion VMS.)

1. To uninstall Orchid Fusion VMS, locate the uninstall file on the computer. The default location for this file is *C:\Program Files\IPConfigure\Orchid Fusion VMS\uninstall.exe*.
2. Double-click on the uninstall file.
3. Click the **Yes** button to allow the application to make changes to the computer.
4. Click the **Uninstall** button to proceed with the uninstall process. This may take a moment.
5. Once the uninstall is complete, click the **Close** button to exit.

Working in Ubuntu 14.04

IPConfigure distributes Orchid Fusion VMS for Ubuntu through debian package files (.deb files). The recommended method for installing the package file is through GDebi Package installer. GDebi can be used either through command line, or through the Graphical User Interface (GUI).

* Orchid Fusion VMS can only be installed on a 64-bit operating system. If you are currently running a 32-bit operating system, the installer will return an “Architecture not supported” error and Orchid Fusion VMS installation will fail.

* You must sign in to the computer as a user with “root” or “sudo” privileges.

* Beginning with Orchid Fusion VMS version 2.10.0, if you are performing an upgrade of your Orchid Fusion VMS, you should check to make sure that all of the registered Orchid Core VMS servers are running, at minimum, Orchid Core VMS version 2.8.0. (You will receive a warning message during the installation if this is not the case.)

* The Ubuntu 14.04 and 16.04 installers are different.

Installing Orchid Fusion VMS on Ubuntu 14.04 LTS

There are a few steps you will need to perform in preparing to install Orchid Fusion VMS.

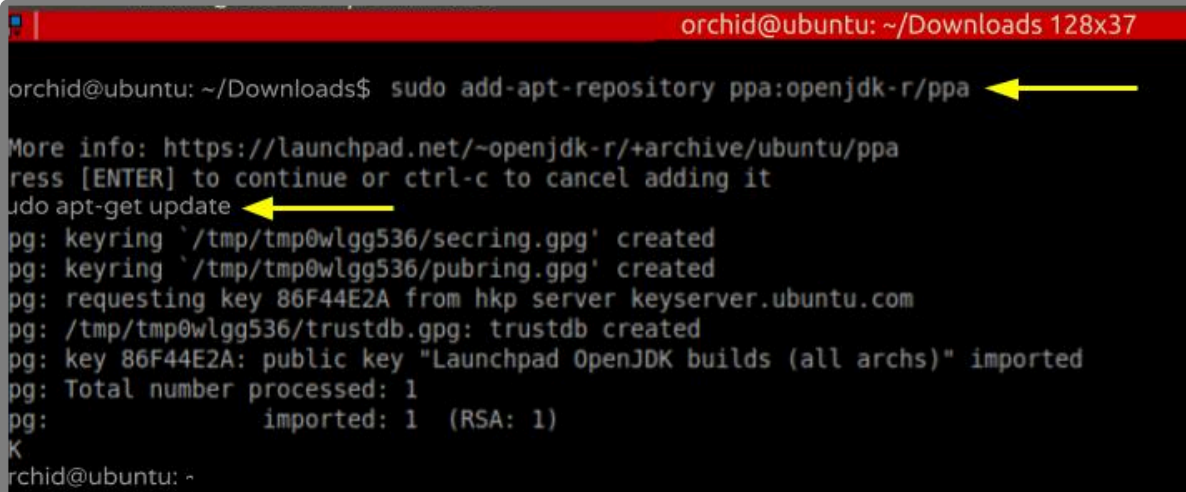
1. You will need to install Java 8 before you install Fusion. Type each of the following commands, pressing **Enter** after each one. (The screenshots that follow show the first few commands and the system response.)

- `sudo add-apt-repository ppa:openjdk-r/ppa`
- `sudo apt-get update`
- `sudo apt install openjdk-8-jre-headless`

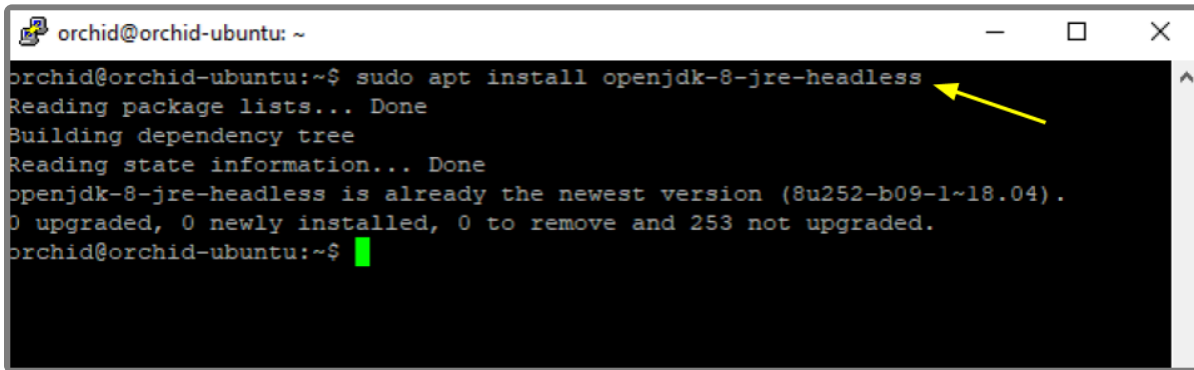
After this command, if the system is upgrading, you may receive a message that requests if you want to continue and use the additional space required. Respond by pressing **Y**.

- `sudo update-alternatives --config java`

If only one version of Java is present on your server, the last command above will do nothing. If more than one version is present, select Java 8 when prompted by the last command.



```
orchid@ubuntu: ~/Downloads 128x37
orchid@ubuntu: ~/Downloads$ sudo add-apt-repository ppa:openjdk-r/ppa
More info: https://launchpad.net/~openjdk-r/+archive/ubuntu/ppa
Press [ENTER] to continue or ctrl-c to cancel adding it
orchid@ubuntu: ~/Downloads$ sudo apt-get update
gpg: keyring `/tmp/tmp0wlgg536/secring.gpg' created
gpg: keyring `/tmp/tmp0wlgg536/pubring.gpg' created
gpg: requesting key 86F44E2A from hkp server keyserver.ubuntu.com
gpg: /tmp/tmp0wlgg536/trustdb.gpg: trustdb created
gpg: key 86F44E2A: public key "Launchpad OpenJDK builds (all archs)" imported
gpg: Total number processed: 1
gpg:      imported: 1 (RSA: 1)
K
orchid@ubuntu: ~
```



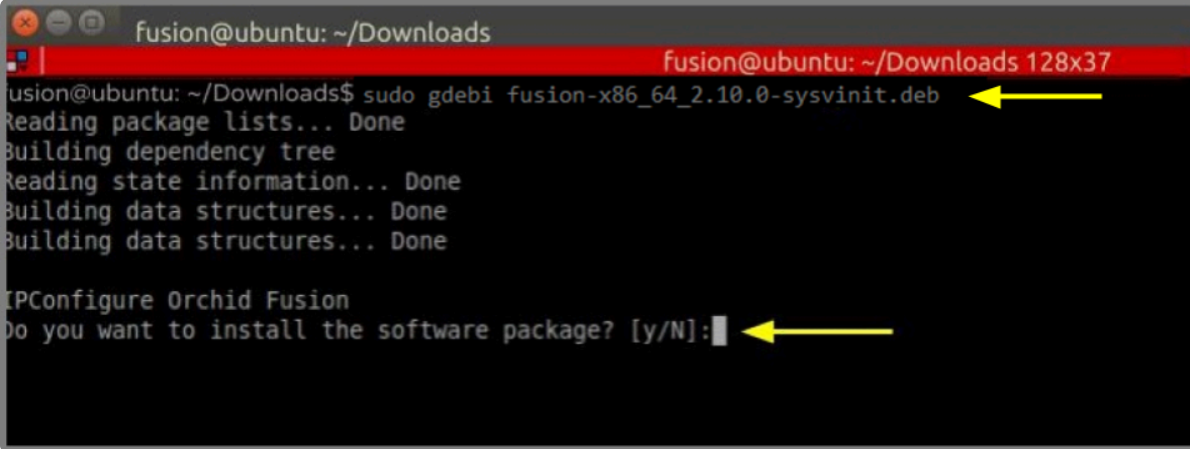
```
orchid@orchid-ubuntu: ~  
orchid@orchid-ubuntu:~$ sudo apt install openjdk-8-jre-headless  
Reading package lists... Done  
Building dependency tree  
Reading state information... Done  
openjdk-8-jre-headless is already the newest version (8u252-b09-1~18.04).  
0 upgraded, 0 newly installed, 0 to remove and 253 not upgraded.  
orchid@orchid-ubuntu:~$
```

2. Download the Fusion.deb file. You can find the latest version of Orchid Fusion VMS on IPConfigure's website at <http://www.ipconfigure.com/products/fusion#download>.
3. Once you've downloaded the Orchid Fusion VMS installation package, decide whether you want to perform the installation via the [Command Line](#) or the [GUI](#).

Installing through the Command Line (Ubuntu Server)

✿ Beginning with Orchid Fusion VMS version 2.10.0, if you are performing an upgrade of your Orchid Fusion VMS, you should check to make sure that all of the registered Orchid Core VMS servers are running, at minimum, Orchid Core VMS version 2.8.0. (You will receive a warning message during the installation if this is not the case.) In addition, you should install the Orchid Fusion VMS upgrade using the command line.

1. Open the *Terminal* program (**CTRL+ALT+T**) and navigate to the directory where you downloaded the Orchid Fusion VMS installation package. (The package is probably stored in the *Downloads* folder.)
2. Unless GDebi has been installed manually, it will need to be installed by typing the following command: `sudo apt-get install gdebi`. Then press **Enter**. It may take a few minutes for GDebi to install, depending on the speed of your system.
3. The GDebi command can now be used to install the Orchid Fusion VMS debian package. The syntax is `sudo gdebi (package-name).deb`, where *package-name* is the complete filename of the Orchid Fusion VMS installation package that you downloaded. For example, if the name of the package is *fusion-x86_64_2.10.0-sysvinit.deb*, type the following command: `sudo gdebi fusion-x86_64_2.10.0-sysvinit.deb`. Then press **Enter**.

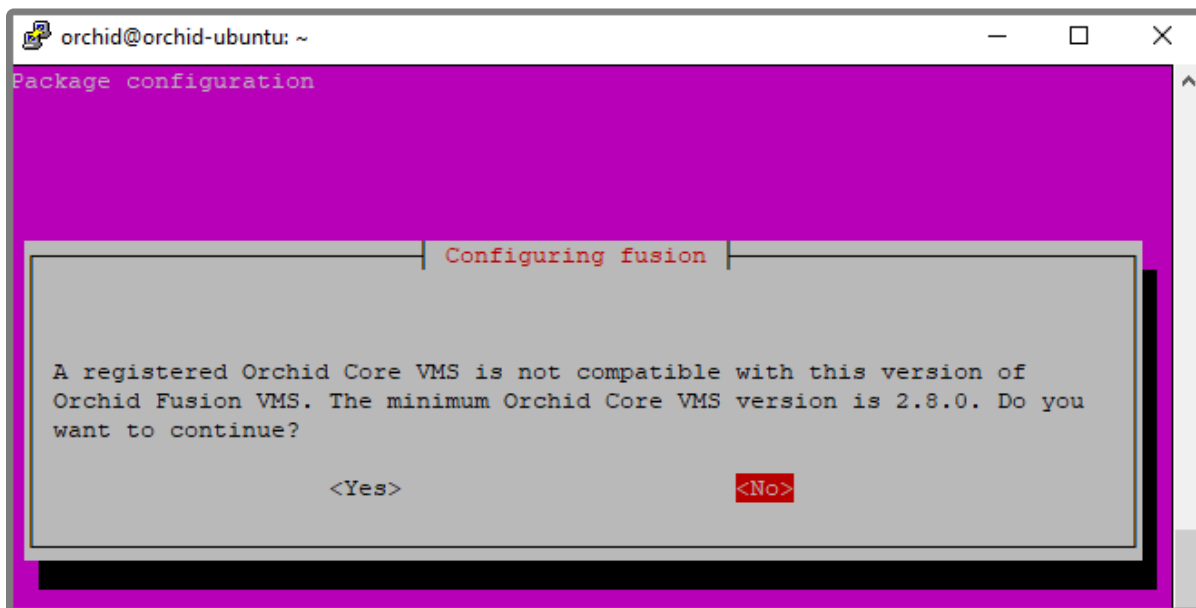


```
fusion@ubuntu: ~/Downloads
fusion@ubuntu: ~/Downloads 128x37
fusion@ubuntu: ~/Downloads$ sudo gdebi fusion-x86_64_2.10.0-sysvinit.deb
Reading package lists... Done
Building dependency tree
Reading state information... Done
Building data structures... Done
Building data structures... Done

IPConfigure Orchid Fusion
Do you want to install the software package? [y/N]:
```

4. You will be asked if you want to install the software. Respond by pressing **Y** and **Enter**.

 - Beginning with Orchid Fusion VMS version 2.10.0, if you are performing an upgrade of your Orchid Fusion VMS, the installer will check the Orchid Core VMS version numbers on each of the registered Orchid Core VMS servers. If any of the registered servers have an Orchid Core VMS version number older than 2.8.0, you will receive a warning message similar to the one pictured here.



- Orchid Fusion VMS Setup will ask if you want to continue with the installation. IPConfigure recommends that you select **No**, and upgrade any Orchid Core VMS servers that don't meet the minimum version requirement. When all of your Orchid Core VMS upgrades are complete, return to step 3 to install the new Orchid Fusion VMS.
5. You will be asked to accept the End User License Agreement. After reading the agreement, press the **Tab** key, then the **Enter** key to accept it.
 6. You will then be asked to accept the agreement in a separate prompt. Use the Left Arrow key to select **Yes**, and press **Enter** to accept it.
 7. The installer will then ask for the web server port number to use for Orchid Fusion VMS. By default, it

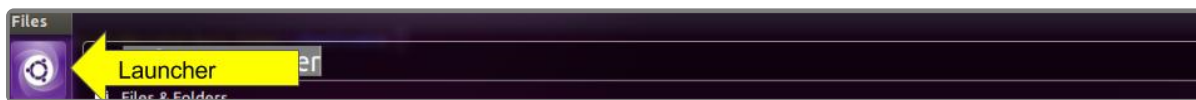
is set to port 8080 (which is the recommended port for most installations). If Orchid Fusion VMS needs to use a different port, update the port then press the **Enter** key.

8. Enter the password you would like to set for the default admin account, then press the **Enter** key.

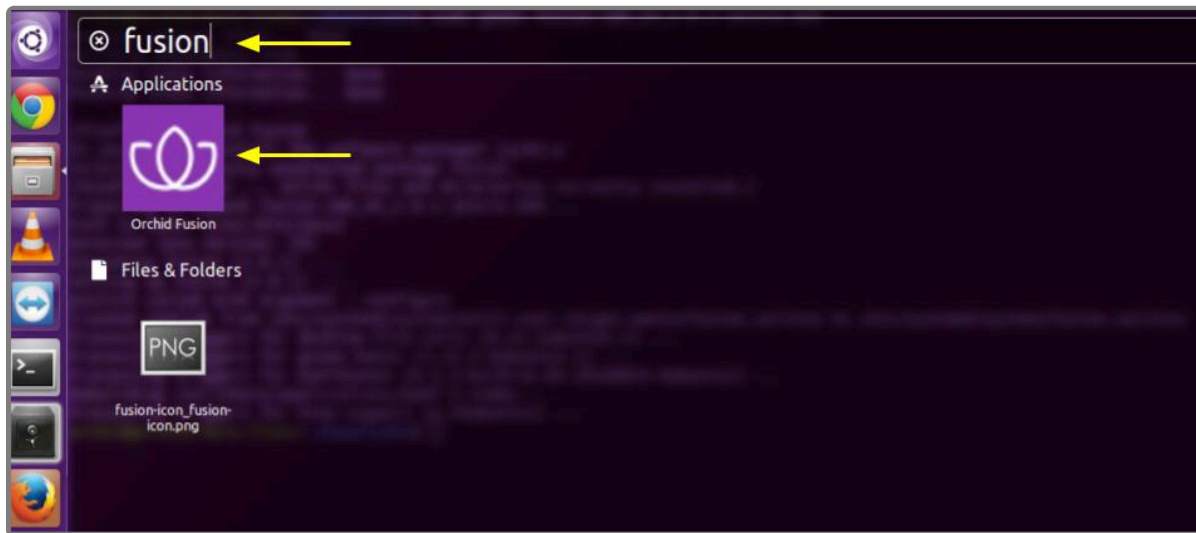
The installation will complete automatically without any additional prompts. This process may take a few minutes. The Orchid Fusion VMS service starts automatically once the package installation is done, after which you can access the Orchid Fusion VMS user interface in your web browser. (For more details on signing in, please refer to the *Enabling ...* topics included in the *Installation Support Topics* section, and the *Sign In* topic in the [Orchid Fusion VMS Administrator Guide](#).)

You may automatically launch a browser to Orchid Fusion VMS using the menu link installed on your server:

- Click on the **Launcher** icon in the top left corner of the screen.



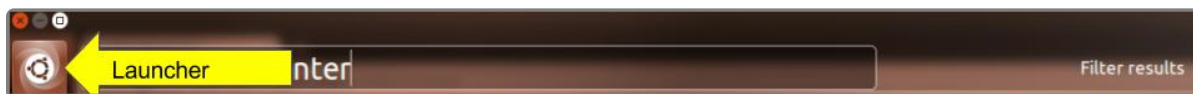
- Type **fusion** in the search box, then click the **Orchid Fusion** icon listed under *Applications*.



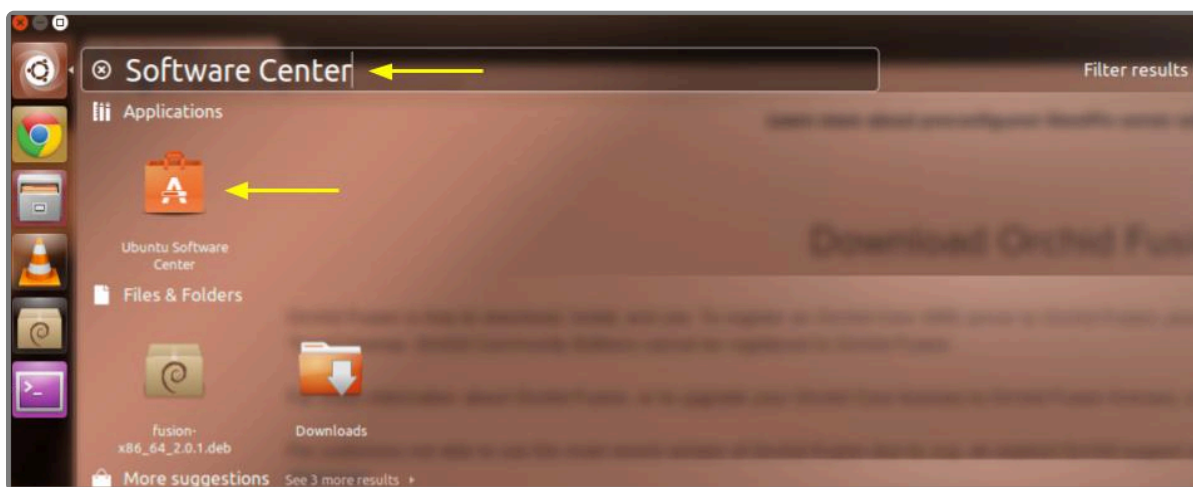
Installing through the GUI (Ubuntu Desktop):

✿ If you are upgrading your Orchid Fusion VMS, you should perform the upgrade using the command line.

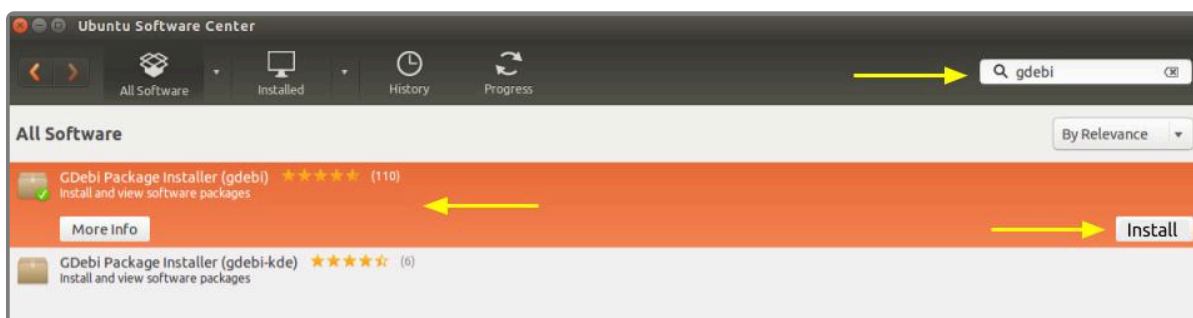
1. Click on the **Launcher** icon in the top left corner of the screen.



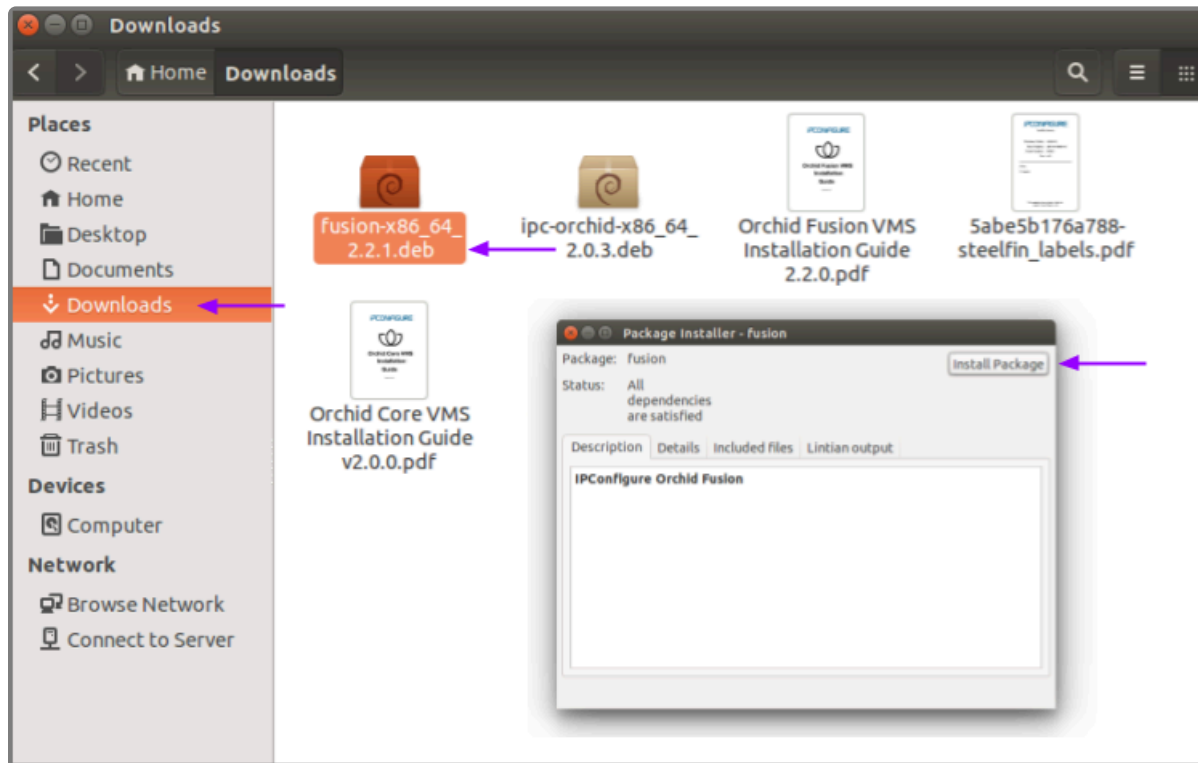
2. Type **Software Center** in the search box, then click the **Ubuntu Software Center** icon to open it.



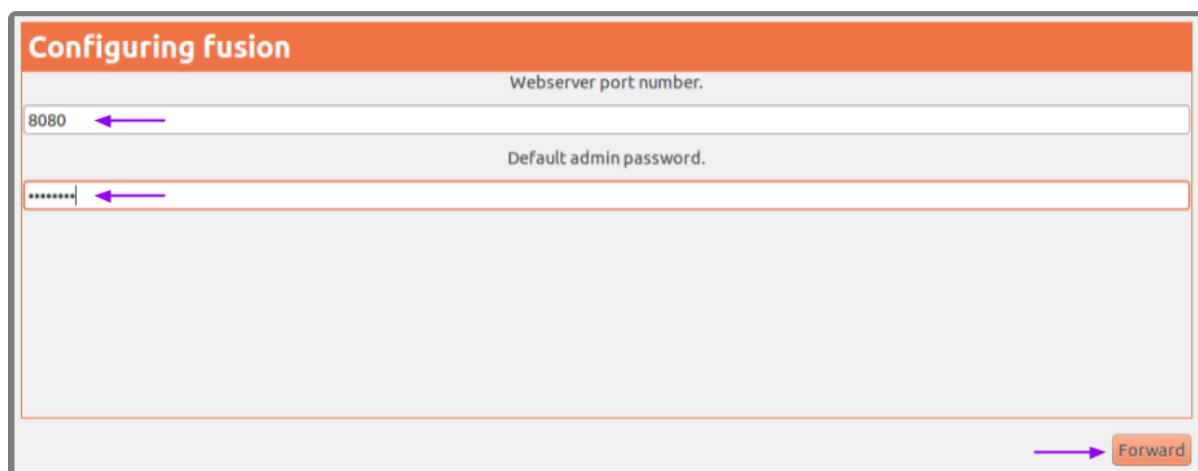
3. In the search bar in the top right-hand corner of the Software Center, type **gdebi**.
4. Select **GDebi Package Installer (gdebi)** (which should be the first result), and then click the **Install** button.



5. After GDebi has finished installing, click the **Files** icon to open the **Files Explorer**, then navigate to the folder storing your Orchid Fusion VMS package (.deb file). (The package is probably stored in the **Downloads** folder.)
6. Right-click on the Orchid Fusion VMS package, hover over **Open With** with the mouse, then select the **GDebi Package Installer** option.



7. Once the GDebi package installer loads, click the **Install Package** button in the top right-hand corner of the window.
8. You will be asked to accept the End User License Agreement. After you read the agreement, mark the *Do you accept this agreement* checkbox and click the **Forward** button.
9. The installer will ask you to set the web server port and default admin password:
 - By default, the web server port is set to port 8080, which is recommended for most installations. Update the port number only if Orchid Fusion VMS needs to use a port other than 8080.
 - Enter the password you would like to set for the default admin account.

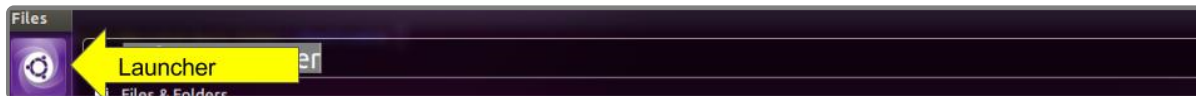


10. When finished, click the **Forward** button.
The installation will complete automatically without any additional prompts. This may take a few minutes.

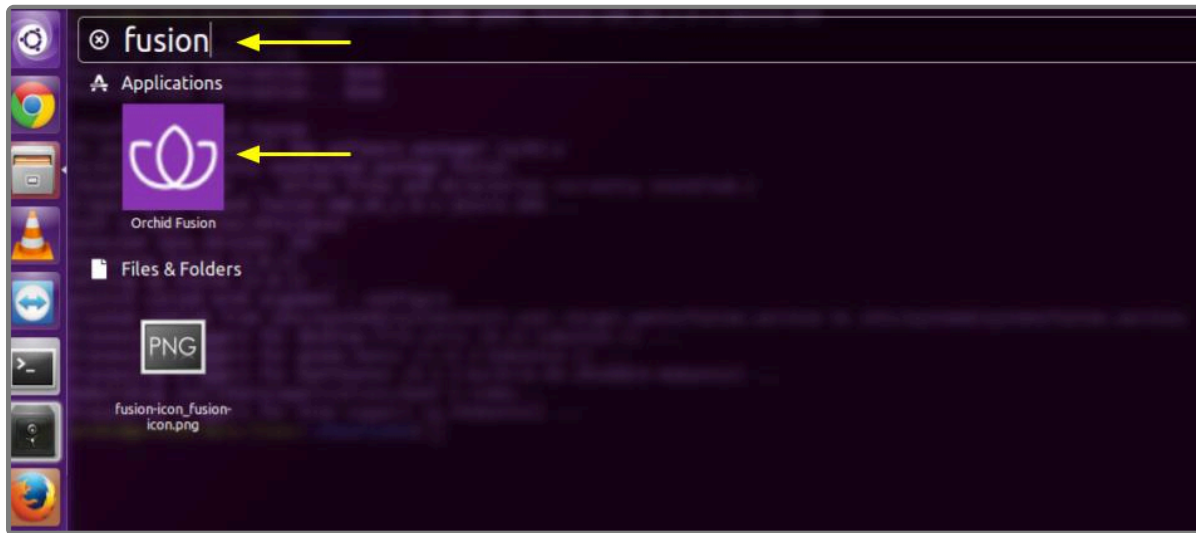
11. Once the package installer displays an “Installation Finished” message at the top of the screen, click the **Close** button to close the installer and complete the installation. The Orchid Fusion VMS service will start automatically once the package installation is done, after which you can access the Orchid Fusion VMS user interface in your web browser. (For more details on signing in, please refer to the *Enabling ...* topics included in the *Installation Support Topics* section, and the *Sign In* topic in the [Orchid Fusion VMS Administrator Guide](#).)

You may automatically launch a browser to Orchid Fusion VMS using the menu link installed on your server:

- Click on the **Launcher** icon in the top left corner of the screen.



- Type **fusion** in the search box, then click the **Orchid Fusion** icon listed under *Applications*.



How to Edit a Configuration File in Ubuntu 14.04 LTS

If it becomes necessary, you can edit the Orchid Fusion VMS configuration file using standard text editors in Linux. This section will describe two methods for editing the configuration files: using the [Command Line](#) and using the [Graphical User Interface](#) (GUI).

* In order to edit a text file as the root user, you will need administrator access to the computer on which Orchid Fusion VMS is installed.

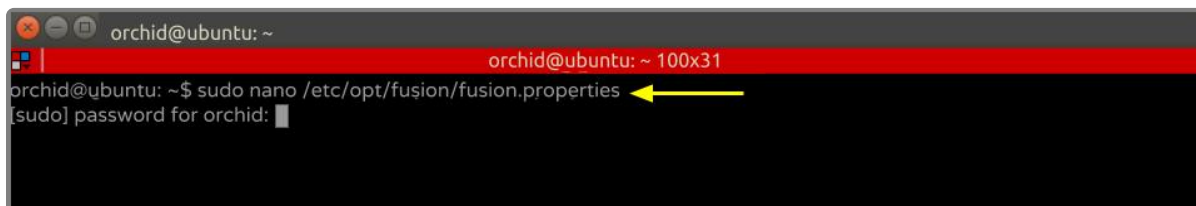
The default location for the Orchid Fusion VMS configuration file in Linux is:

- `/etc/opt/fusion/fusion.properties`
 - Stores all of the Orchid Fusion VMS settings and can be used to update things like the Orchid Fusion VMS port number, manually update the admin password, etc.

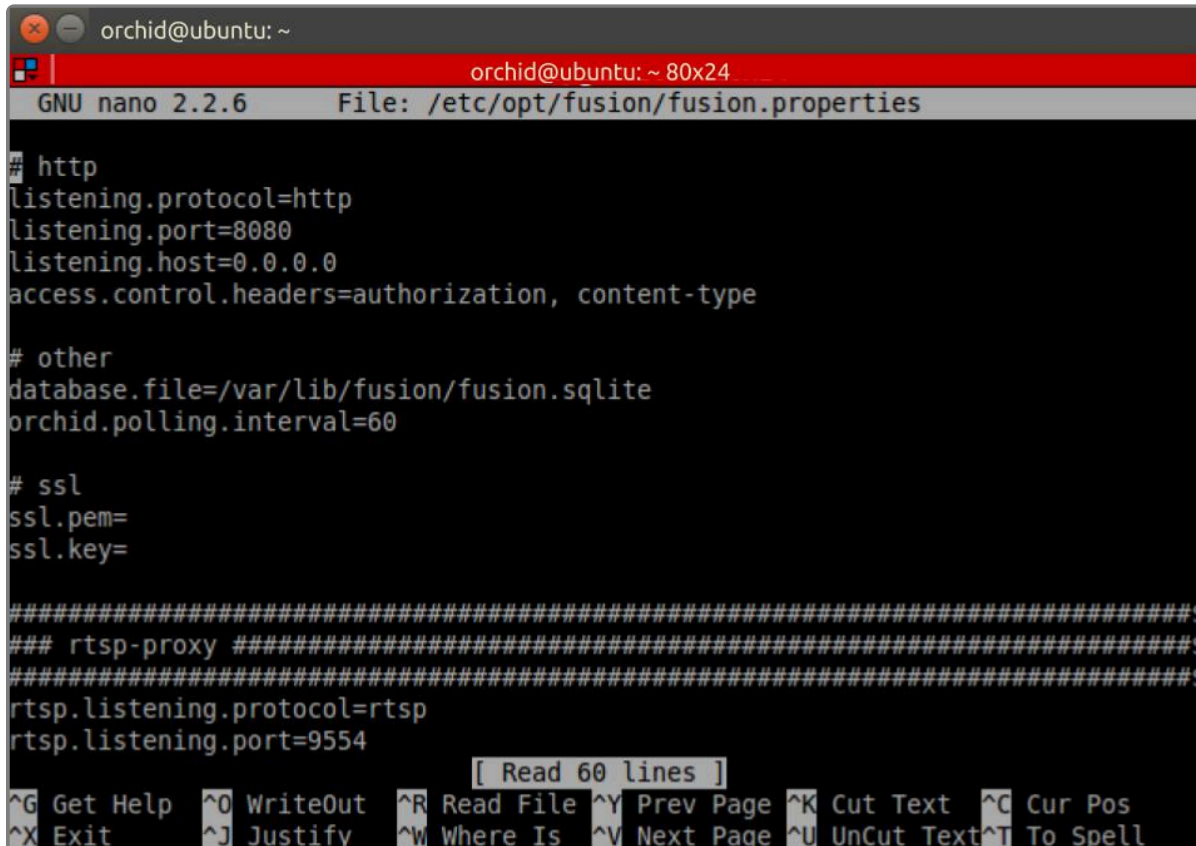
Refer to the [Installation Support Topics](#) section for a list of available properties.

Editing the Configuration File through the Command Line:

1. Open the *Terminal* program (**CTRL+ALT+T**) and open the Orchid Fusion VMS configuration file in the nano text editor by typing the following command: `sudo nano /etc/opt/fusion/fusion.properties`. Then press **Enter**.



2. After running that command, you will be prompted to enter the *[sudo] password* for your user. Type the password used to sign in to your computer, then press **Enter**. The configuration file will open.

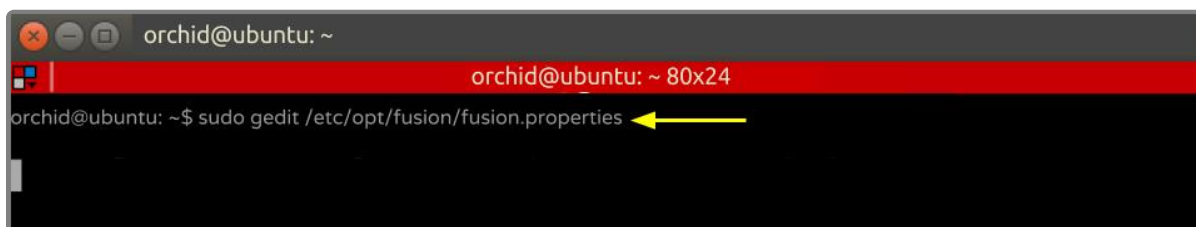


```
orchid@ubuntu: ~  
orchid@ubuntu: ~ 80x24  
GNU nano 2.2.6 File: /etc/opt/fusion/fusion.properties  
# http  
listening.protocol=http  
listening.port=8080  
listening.host=0.0.0.0  
access.control.headers=authorization, content-type  
  
# other  
database.file=/var/lib/fusion/fusion.sqlite  
orchid.polling.interval=60  
  
# ssl  
ssl.pem=  
ssl.key=  
  
#####  
### rtsp-proxy #####  
#####  
rtsp.listening.protocol=rtsp  
rtsp.listening.port=9554  
[ Read 60 lines ]  
^G Get Help ^O WriteOut ^R Read File ^Y Prev Page ^K Cut Text ^C Cur Pos  
^X Exit ^J Justify ^W Where Is ^V Next Page ^U UnCut Text ^T To Spell
```

3. Use the arrow keys to move the cursor around the screen and update any default settings. You may also add new settings to the end of the file.
4. When you are ready to save the file, click **CTRL+X** on the keyboard, then type **Y** to save the file and close the text editor. If you do not want to save the file, type **N** (instead of Y) after typing **CTRL+X**.
5. [Restart](#) the Orchid Fusion VMS service in Linux to implement the new settings.

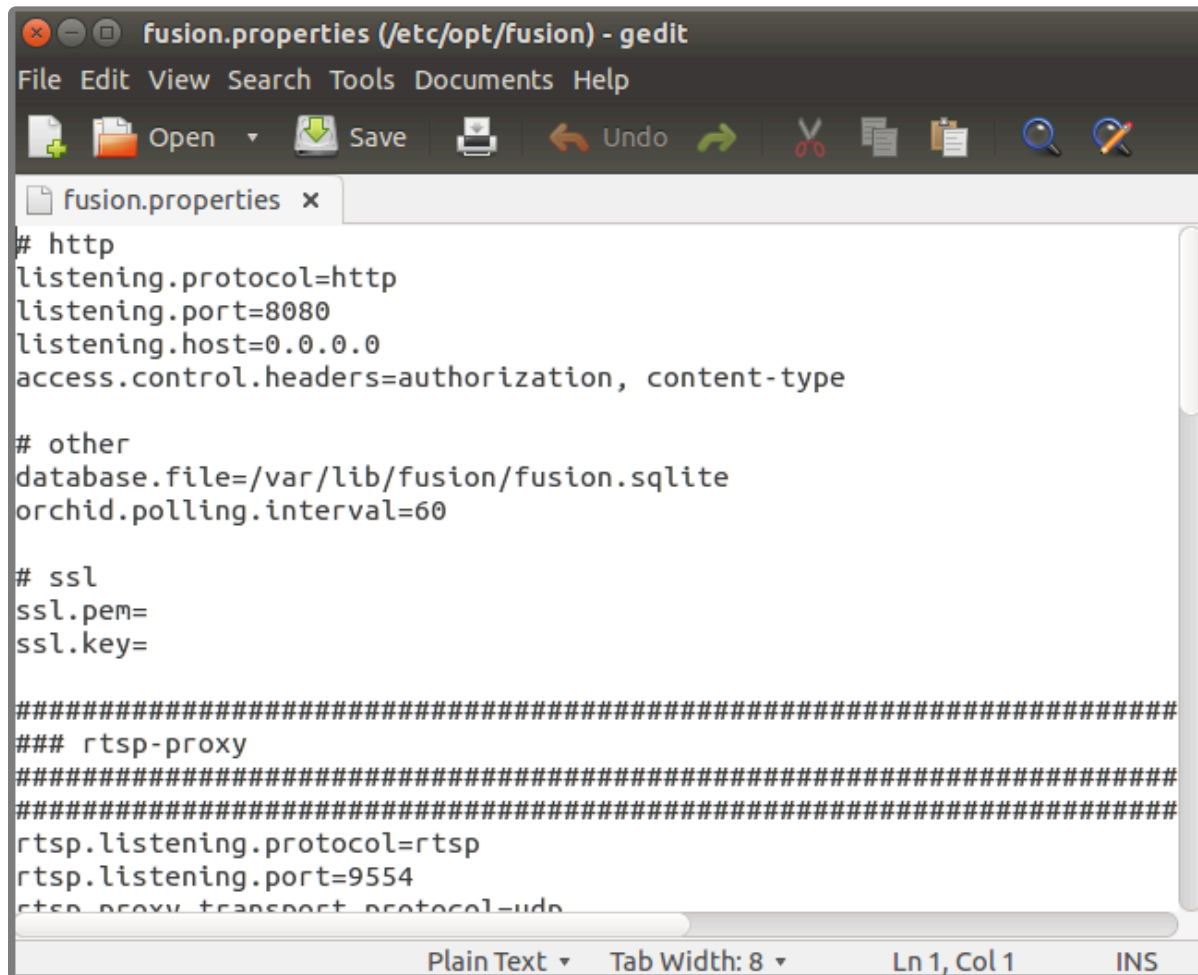
Editing Configuration Files through the GUI:

1. Open the *Terminal* program (**CTRL+ALT+T**) and open Orchid Fusion VMS's configuration file by typing the following command: `sudo gedit /etc/opt/fusion/fusion.properties`. Then press **Enter**.



```
orchid@ubuntu: ~  
orchid@ubuntu: ~ 80x24  
orchid@ubuntu: ~$ sudo gedit /etc/opt/fusion/fusion.properties
```

2. After running that command, you will be prompted to enter your password to perform administrative tasks. Type the same password you use to sign in to your computer, then press **Enter**.
3. A text editor will open in a new window allowing you to edit the configuration file. Update default settings as needed. You may also add new settings to the end of the file.



```
# http
listening.protocol=http
listening.port=8080
listening.host=0.0.0.0
access.control.headers=authorization, content-type

# other
database.file=/var/lib/fusion/fusion.sqlite
orchid.polling.interval=60

# ssl
ssl.pem=
ssl.key=

#####
### rtsp-proxy
#####
rtsp.listening.protocol=rtsp
rtsp.listening.port=9554
rtsp.proxy.transport.protocol=udp
```

4. When you are ready to save the file, click **File/Save** or the **Save** button.
5. [Restart](#) the Orchid Fusion VMS service to implement the new settings.

* Beginning with version 2.10, some of the Orchid Core VMS configuration settings can be edited from within the Orchid Fusion VMS user interface. (This is done using the *Advanced Settings* feature which is explained in the [Orchid Fusion VMS Administrator Guide](#).) To edit the Orchid Core VMS configuration file using standard text editors in Linux, please refer to the [Orchid Core VMS Installation Guide](#).

How to Manage the Orchid Fusion VMS Service in Ubuntu 14.04 LTS

Orchid Fusion VMS runs on Linux as a service. If you need to check the status, start, or stop the service, you can do this from the [command line](#) or the [GUI](#).

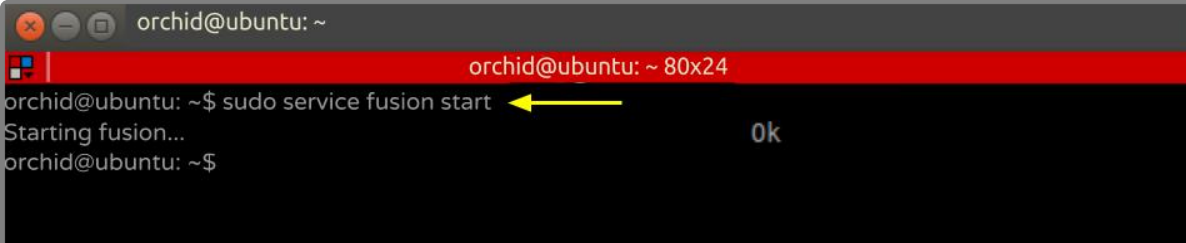
- **Fusion:** This service supports the Orchid Fusion VMS server that manages registered Orchid Core VMS servers and provides access to video from those servers.

Tips

- After you've configured your Orchid Fusion VMS properties and started the service, you should check the service status to verify Orchid Fusion VMS is running.
- You will need to restart the service whenever a change has been made to the Orchid Fusion VMS configuration file.
- The Monit Service Manager must be stopped before you can stop the Orchid Fusion VMS service.

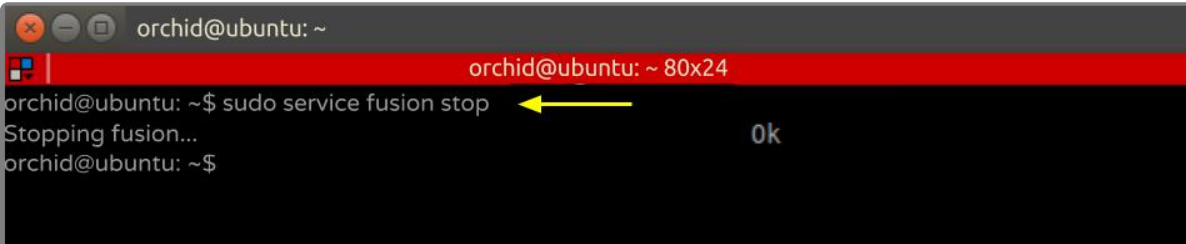
How to Manage the Orchid Fusion VMS Service Through the Command Line

1. Open the *Terminal* program (**CTRL+ALT+T**).
2. Type the following command: `sudo service fusion (command)` (where the *command* is *start*, *stop*, *restart*, or *status*). Then press **Enter**.



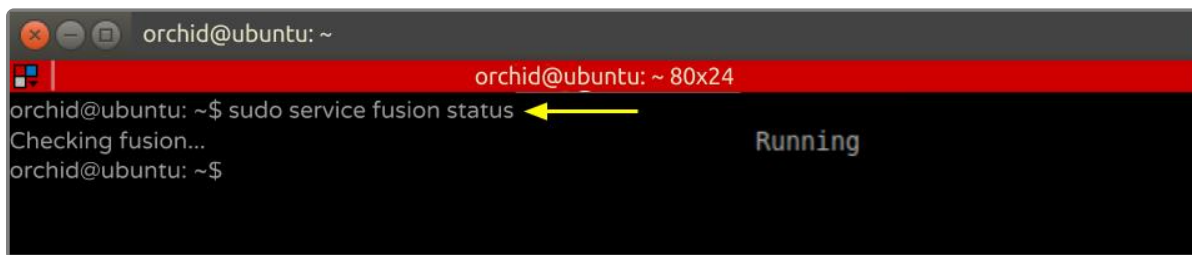
```
orchid@ubuntu: ~
orchid@ubuntu: ~ 80x24
orchid@ubuntu: ~$ sudo service fusion start
Starting fusion...
orchid@ubuntu: ~$
```

A terminal window titled "orchid@ubuntu: ~" with a red header bar. The command "sudo service fusion start" is entered, and the output "Starting fusion..." is displayed. A yellow arrow points to the command. The prompt returns to "orchid@ubuntu: ~\$".



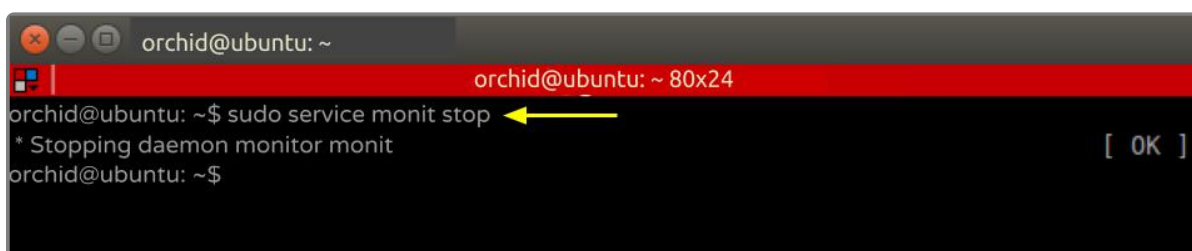
```
orchid@ubuntu: ~
orchid@ubuntu: ~ 80x24
orchid@ubuntu: ~$ sudo service fusion stop
Stopping fusion...
orchid@ubuntu: ~$
```

A terminal window titled "orchid@ubuntu: ~" with a red header bar. The command "sudo service fusion stop" is entered, and the output "Stopping fusion..." is displayed. A yellow arrow points to the command. The prompt returns to "orchid@ubuntu: ~\$".



```
orchid@ubuntu: ~  
orchid@ubuntu: ~ 80x24  
orchid@ubuntu: ~$ sudo service fusion status  
Checking fusion... Running  
orchid@ubuntu: ~$
```

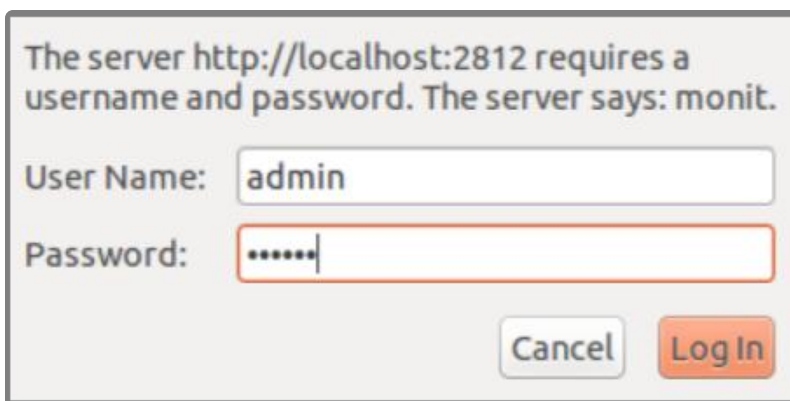
✿ As a fail-safe measure, the Monit Service Manager will restart the Orchid Fusion VMS service if it goes down. In order to stop the service, the Monit Service Manager must be stopped first. Type the following command: `sudo service monit stop`. Then press **Enter**.



```
orchid@ubuntu: ~  
orchid@ubuntu: ~ 80x24  
orchid@ubuntu: ~$ sudo service monit stop  
* Stopping daemon monitor monit [ OK ]  
orchid@ubuntu: ~$
```

How to Manage the Orchid Fusion VMS Service Through the GUI

1. Open a web browser running on the same computer as the service. Type `http://localhost:2812` into the address bar to access Monit (Orchid Fusion VMS's process monitor).
2. You will be asked for a username and password. The username is `admin` and the password is `Orc#1d` (unless it was manually changed through the Monit configuration file).



The server `http://localhost:2812` requires a username and password. The server says: monit.

User Name:

Password:

A list of the services setup with Monit (including fusion) will appear. The status of each service is listed in the *Status* column.

Service Status

Monit is **running** on ubuntu with uptime, 2m and monitoring:

System	Status	Load	CPU
ubuntu	Running	[0.69] [0.80] [0.76]	8.8%us, 0.9%sy, 1.1%wa

Process	Status	Uptime
orchid_server	Running	3d 1h 41m
onvif_autodiscovery_service	Running	20d 5h 56m
fusion	Running	7m

Select Service to View Details

- Click the name of the service you need to stop, start, or restart. A detailed information screen for the monitored service you selected will appear.

Process status

Parameter	Value
Name	fusion
Pid file	/var/run/fusion.pid
Status	Running
Monitoring mode	active
Monitoring status	Monitored
Start program	/etc/init.d/fusion start' timeout 60 second(s)
Stop program	/etc/init.d/fusion stop' timeout 30 second(s)
Existence	If doesn't exist 1 times within 1 cycle(s) then restart else if succeeded 1 times within 1 cycle(s) then alert
Data collected	Mon, 28 Aug 2017 15:49:53
Process id	15165
Parent process id	32280
Process uptime	6d 23h 0m
Children	0
CPU usage	0.0% (Usage / Number of CPUs)
Total CPU usage (incl. children)	0.0%
Memory usage	5.8% [445992kB]
Total memory usage (incl. children)	5.8% [445992kB]
Pid	If changed 1 times within 1 cycle(s) then alert
Ppid	If changed 1 times within 1 cycle(s) then alert

Service Status

Start service Stop service Restart service Disable monitoring

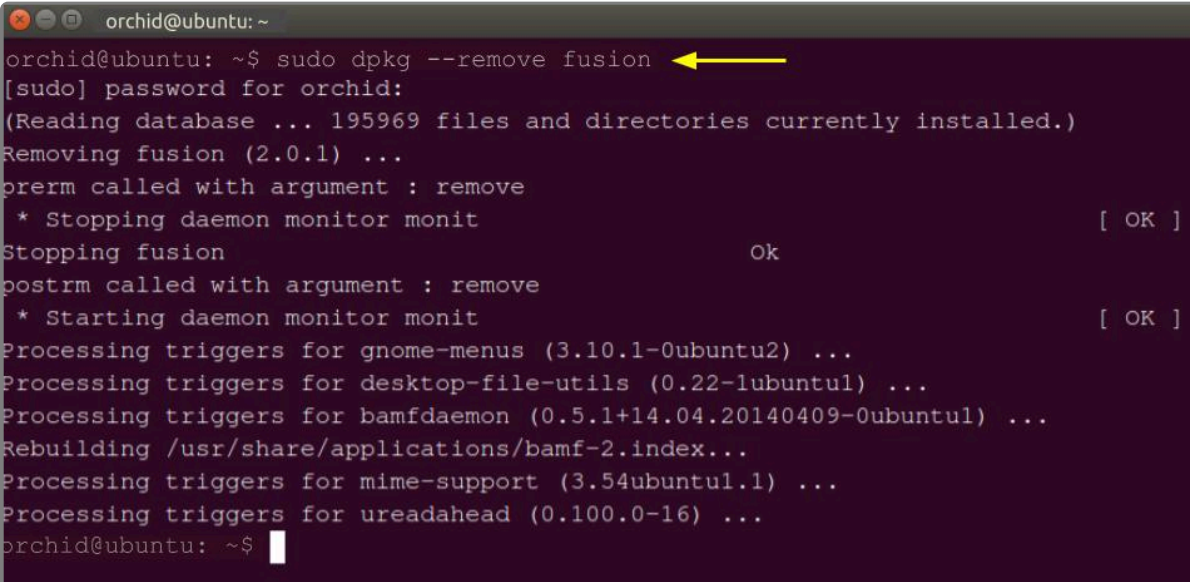
- Click the **Stop Service** button to stop the selected service. This action will keep the service off until the **Start Service** button is clicked.
- Click the **Start Service** button at the bottom of the screen to start the selected service.
- Click the **Restart Service** button to restart the service. The status of the service will update from *Running* to *Running-restart pending*. Once the service has restarted successfully, the status will return to *Running*.

Uninstalling Orchid Fusion VMS in Ubuntu

14.04

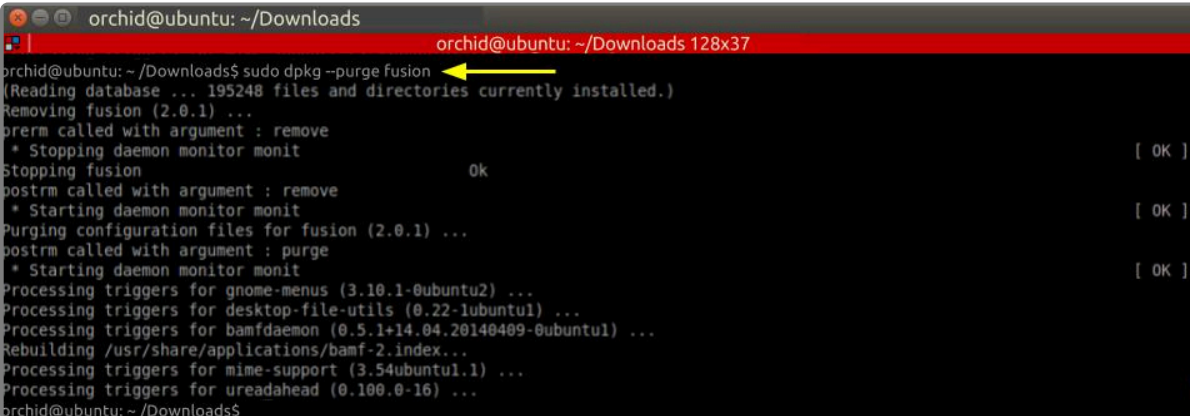
There are a couple of options for removing the Orchid Fusion VMS software. The *Remove* command will uninstall all files installed and created by Orchid Fusion VMS except the configuration files and the database. The *Purge* command will uninstall all files installed and created by Orchid Fusion VMS.

1. Open the *Terminal* program (**CTRL+ALT+T**).
2. To uninstall Orchid Fusion VMS, you may use step 3 or 4 below.
3. To uninstall Orchid Fusion VMS (while keeping the configuration files and the database), type the following command: `sudo dpkg --remove fusion`. Enter the password when prompted to do so, then press **Enter**.



```
orchid@ubuntu: ~$ sudo dpkg --remove fusion
[sudo] password for orchid:
(Reading database ... 195969 files and directories currently installed.)
Removing fusion (2.0.1) ...
prerm called with argument : remove
* Stopping daemon monitor monit [ OK ]
Stopping fusion Ok
postrm called with argument : remove
* Starting daemon monitor monit [ OK ]
Processing triggers for gnome-menus (3.10.1-0ubuntu2) ...
Processing triggers for desktop-file-utils (0.22-1ubuntu1) ...
Processing triggers for bamfdaemon (0.5.1+14.04.20140409-0ubuntu1) ...
Rebuilding /usr/share/applications/bamf-2.index...
Processing triggers for mime-support (3.54ubuntu1.1) ...
Processing triggers for ureadahead (0.100.0-16) ...
orchid@ubuntu: ~$
```

4. To uninstall all of the Orchid Fusion VMS files, type the following command: `sudo dpkg --purge fusion`. Enter the password when prompted to do so, then press **Enter**.



```
orchid@ubuntu: ~/Downloads$ sudo dpkg --purge fusion
(Reading database ... 195248 files and directories currently installed.)
Removing fusion (2.0.1) ...
prerm called with argument : remove
* Stopping daemon monitor monit [ OK ]
Stopping fusion Ok
postrm called with argument : remove
* Starting daemon monitor monit [ OK ]
Purging configuration files for fusion (2.0.1) ...
postrm called with argument : purge
* Starting daemon monitor monit [ OK ]
Processing triggers for gnome-menus (3.10.1-0ubuntu2) ...
Processing triggers for desktop-file-utils (0.22-1ubuntu1) ...
Processing triggers for bamfdaemon (0.5.1+14.04.20140409-0ubuntu1) ...
Rebuilding /usr/share/applications/bamf-2.index...
Processing triggers for mime-support (3.54ubuntu1.1) ...
Processing triggers for ureadahead (0.100.0-16) ...
orchid@ubuntu: ~/Downloads$
```

Working in Ubuntu 16.04 to 20.04

IPConfigure distributes Orchid Fusion VMS for Ubuntu through debian package files (.deb files). The recommended method for installing the package file is through GDebi Package installer. GDebi can be used either through command line, or through the Graphical User Interface (GUI).

The installation instructions provided for Ubuntu 16.04 LTS also apply to Ubuntu 18.04 LTS, Ubuntu 20.04 LTS, Debian Jessie and Raspbian Jessie. Ubuntu 16.04, Ubuntu 18.04, and Ubuntu 20.04 will use the same installation package file. Debian Jessie and Raspbian Jessie will each have a different installation package file.

✿ Orchid Fusion VMS can only be installed on a 64-bit operating system. If you are currently running a 32-bit operating system, the installer will return an “Architecture not supported” error and Orchid Fusion VMS installation will fail.

✿ You must sign in to the computer as a user with “root” or “sudo” privileges.

✿ Beginning with Orchid Fusion VMS version 2.10.0, if you are performing an upgrade of your Orchid Fusion VMS, you should check to make sure that all of the registered Orchid Core VMS servers are running, at minimum, Orchid Core VMS version 2.8.0. (You will receive a warning message during the installation if this is not the case.)

✿ The Ubuntu 14.04 and 16.04 installers are different.

Installing Orchid Fusion VMS on Ubuntu 16.04 to 20.04

There are a few steps you will need to perform to prepare to install Orchid Fusion VMS.

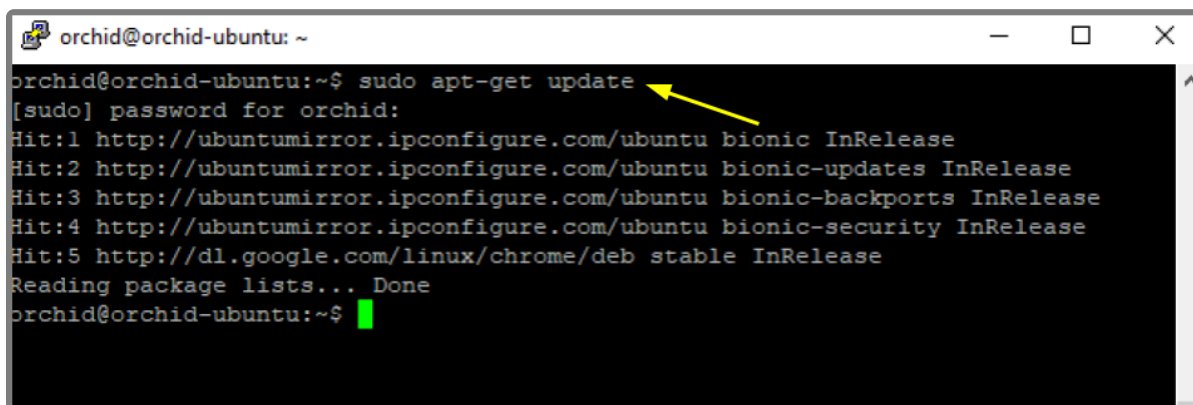
1. You will need to install Java 8 before you install Fusion. Type each of the following commands, pressing **Enter** after each one. (The screenshots that follow show the first couple of commands and the system response.)

- `sudo apt-get update`
- `sudo apt install openjdk-8-jre-headless`

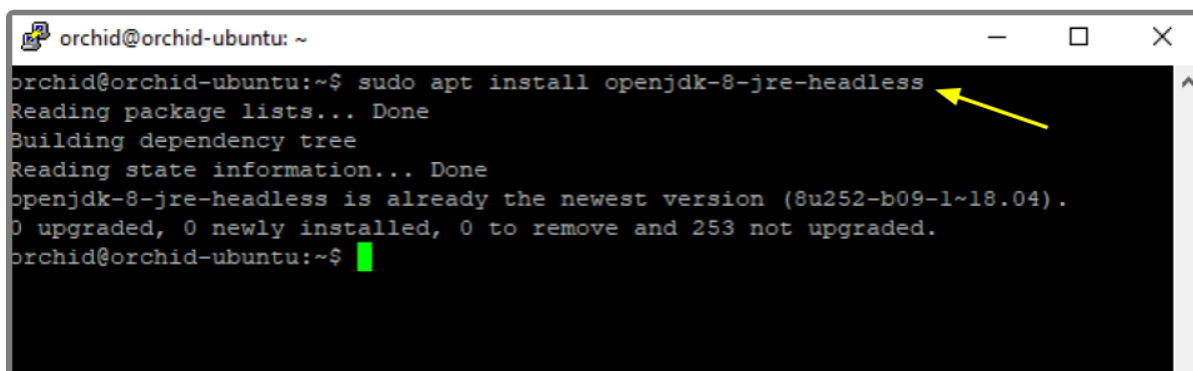
After this command, if the system is upgrading, you may receive a message that requests if you want to continue and use the additional space required. Respond by pressing **Y**.

- `sudo update-alternatives --config java`

If only one version of Java is present on your server, the last command above will do nothing. If more than one version is present, select Java 8 when prompted by the last command.



```
orchid@orchid-ubuntu: ~  
orchid@orchid-ubuntu:~$ sudo apt-get update  
[sudo] password for orchid:  
Hit:1 http://ubuntumirror.ipconfigure.com/ubuntu bionic InRelease  
Hit:2 http://ubuntumirror.ipconfigure.com/ubuntu bionic-updates InRelease  
Hit:3 http://ubuntumirror.ipconfigure.com/ubuntu bionic-backports InRelease  
Hit:4 http://ubuntumirror.ipconfigure.com/ubuntu bionic-security InRelease  
Hit:5 http://dl.google.com/linux/chrome/deb stable InRelease  
Reading package lists... Done  
orchid@orchid-ubuntu:~$
```



```
orchid@orchid-ubuntu: ~  
orchid@orchid-ubuntu:~$ sudo apt install openjdk-8-jre-headless  
Reading package lists... Done  
Building dependency tree  
Reading state information... Done  
openjdk-8-jre-headless is already the newest version (8u252-b09-1~18.04).  
0 upgraded, 0 newly installed, 0 to remove and 253 not upgraded.  
orchid@orchid-ubuntu:~$
```

2. Download the Fusion .deb file. You can find the latest version of Orchid Fusion VMS (for Ubuntu 16.04, Ubuntu 18.04, Debian Jessie, and Raspbian Jessie) on IPConfigure's website at

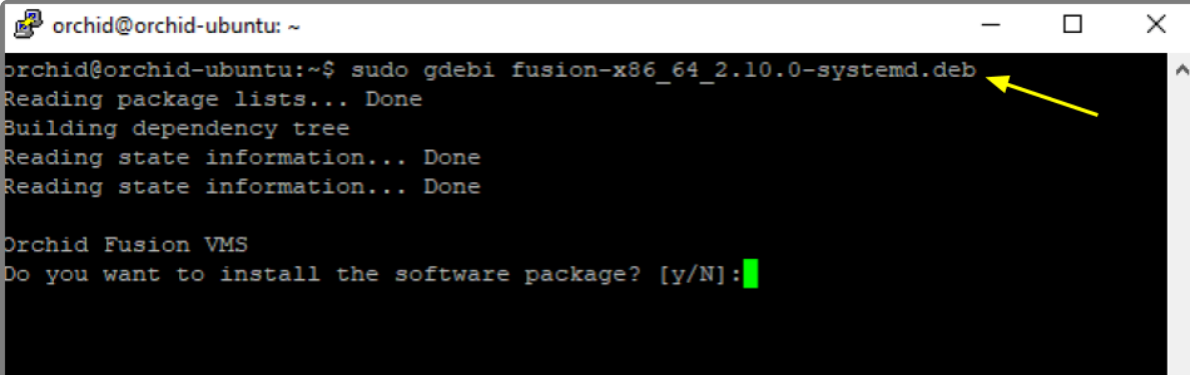
<http://www.ipconfigure.com/products/fusion#download>.

- Once you've downloaded the Orchid Fusion VMS installation package, decide whether you want to perform the installation via the [Command Line](#) or the [GUI](#).

Installing through the Command Line (Ubuntu Server):

* Beginning with Orchid Fusion VMS version 2.10.0, if you are performing an upgrade of your Orchid Fusion VMS, you should check to make sure that all of the registered Orchid Core VMS servers are running, at minimum, Orchid Core VMS version 2.8.0. (You will receive a warning message during the installation if this is not the case.) In addition, you should install the Orchid Fusion VMS upgrade using the command line.

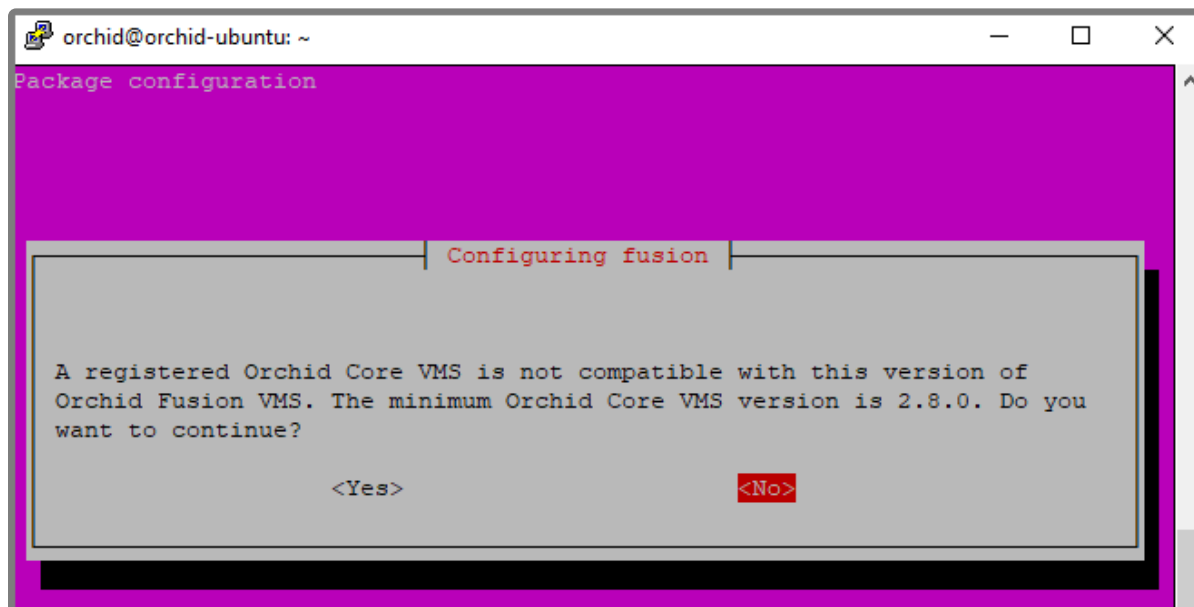
- Open the *Terminal* program (**CTRL+ALT+T**) and navigate to the directory where you downloaded the Orchid Fusion VMS installation package. (The package is probably stored in the *Downloads* folder.)
- Unless GDebi has been installed manually, it will need to be installed. Type the following command: `sudo apt-get install gdebi`. Then press **Enter**.
It may take a few minutes for GDebi to install, depending on the speed of your system.
- The GDebi command can now be used to install the Orchid Fusion VMS debian package. The syntax is `sudo gdebi (package-name).deb`, where *package-name* is the complete filename of the Orchid Fusion VMS installation package that you downloaded. For example, if the name of the package is *fusion-x86_64_2.10.0-systemd.deb*, type the following command: `sudo gdebi fusion-x86_64_2.10.0-systemd.deb`. Then press **Enter**.



```
orchid@orchid-ubuntu: ~  
orchid@orchid-ubuntu:~$ sudo gdebi fusion-x86_64_2.10.0-systemd.deb  
Reading package lists... Done  
Building dependency tree  
Reading state information... Done  
Reading state information... Done  
  
Orchid Fusion VMS  
Do you want to install the software package? [y/N]:
```

A screenshot of a terminal window titled 'orchid@orchid-ubuntu: ~'. The terminal shows the command 'sudo gdebi fusion-x86_64_2.10.0-systemd.deb' being executed. The output shows the package lists being read, the dependency tree being built, and state information being read. It then displays 'Orchid Fusion VMS' and asks 'Do you want to install the software package? [y/N]:'. A yellow arrow points to the command line.

- You will be asked if you want to install the software. Respond by pressing **Y** and **Enter**.
 - Beginning with Orchid Fusion VMS version 2.10.0, if you are performing an upgrade of your Orchid Fusion VMS, the installer will check the Orchid Core VMS version numbers on each of the registered Orchid Core VMS servers. If any of the registered servers have an Orchid Core VMS version number older than 2.8.0, you will receive a warning message similar to the one pictured here.

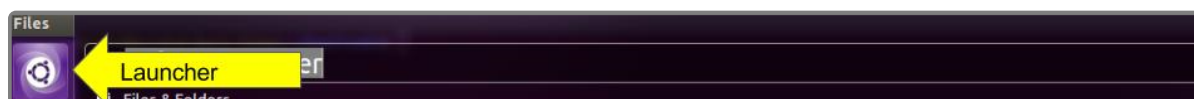


- Orchid Fusion VMS Setup will ask if you want to continue with the installation. IPConfigure recommends that you select **No**, and upgrade any Orchid Core VMS servers that don't meet the minimum version requirement. When all of your Orchid Core VMS upgrades are complete, return to step 3 to install the new Orchid Fusion VMS.
5. You will be asked to accept the End User License Agreement. After reading the agreement, press the **Tab** key, then the **Enter** key to accept it.
 6. You will then be asked to accept the agreement in a separate prompt. Use the **Left Arrow** key to select **Yes**, and press **Enter** to accept it.
 7. The installer will then ask for the web server port number to use for Orchid Fusion VMS. By default, it is set to port 8080 (which is the recommended port for most installations). If Orchid Fusion VMS needs to use a different port, update the port then press the **Enter** key.
 8. Enter the password you would like to set for the default admin account, then press the **Enter** key.

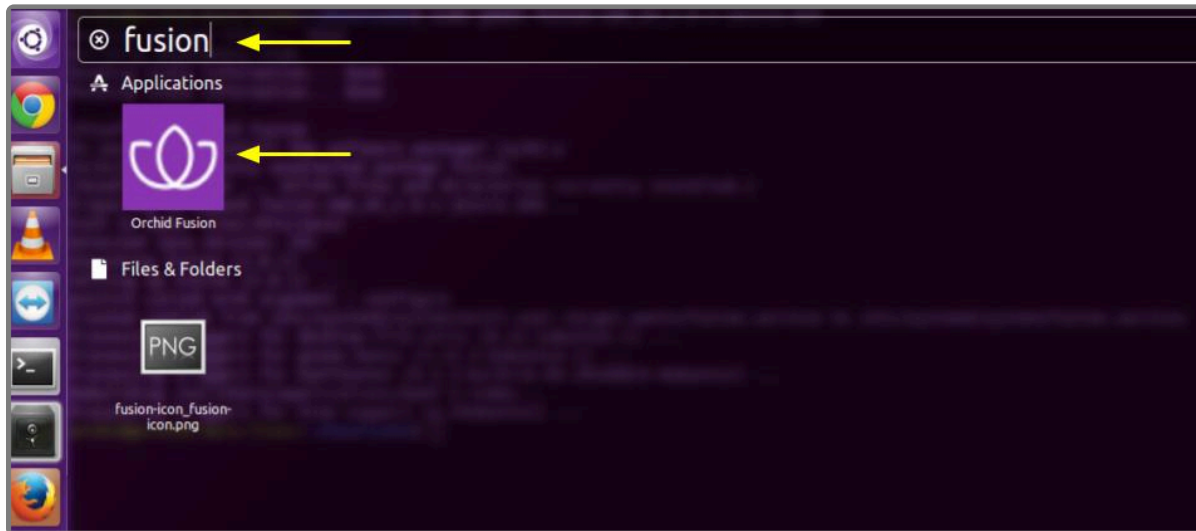
The installation will complete automatically without any additional prompts. This process may take a few minutes. The Orchid Fusion VMS service starts automatically once the package installation is done, after which you can access the Orchid Fusion VMS user interface in your web browser. (For more details on signing in, please refer to the *Enabling...* topics included in the [Installation Support Topics](#) section, and the *Sign In* topic in the [Orchid Fusion VMS Administrator Guide](#).)

You may automatically launch a browser to Orchid Fusion VMS using the menu link installed on your server:

- Click on the **Launcher** icon in the top left corner of the screen.



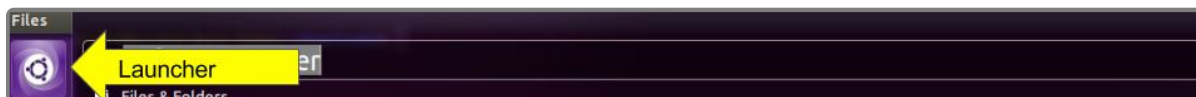
- Type *fusion* in the search box, then click the **Orchid Fusion** icon listed under *Applications*.



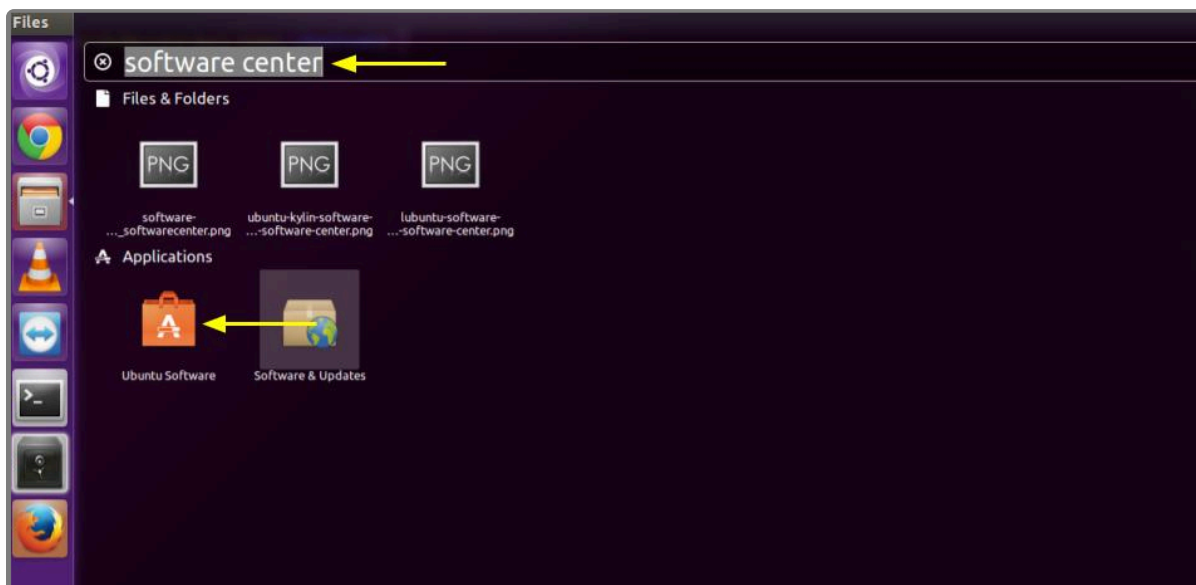
Installing through the GUI (Ubuntu Desktop):

- Beginning with Orchid Fusion VMS version 2.2.1, if you are performing an upgrade of your Orchid Fusion VMS, you should perform the upgrade using the command line.

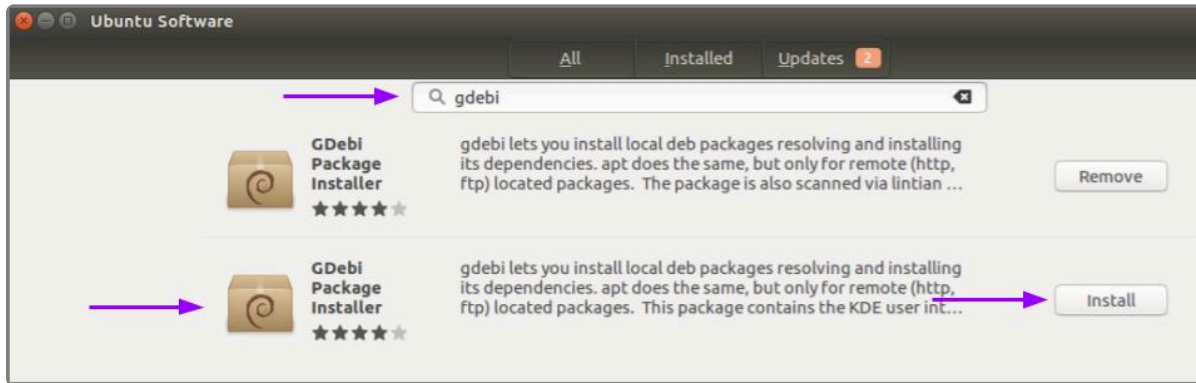
1. Click on the **Launcher** icon in the top left corner of the screen.



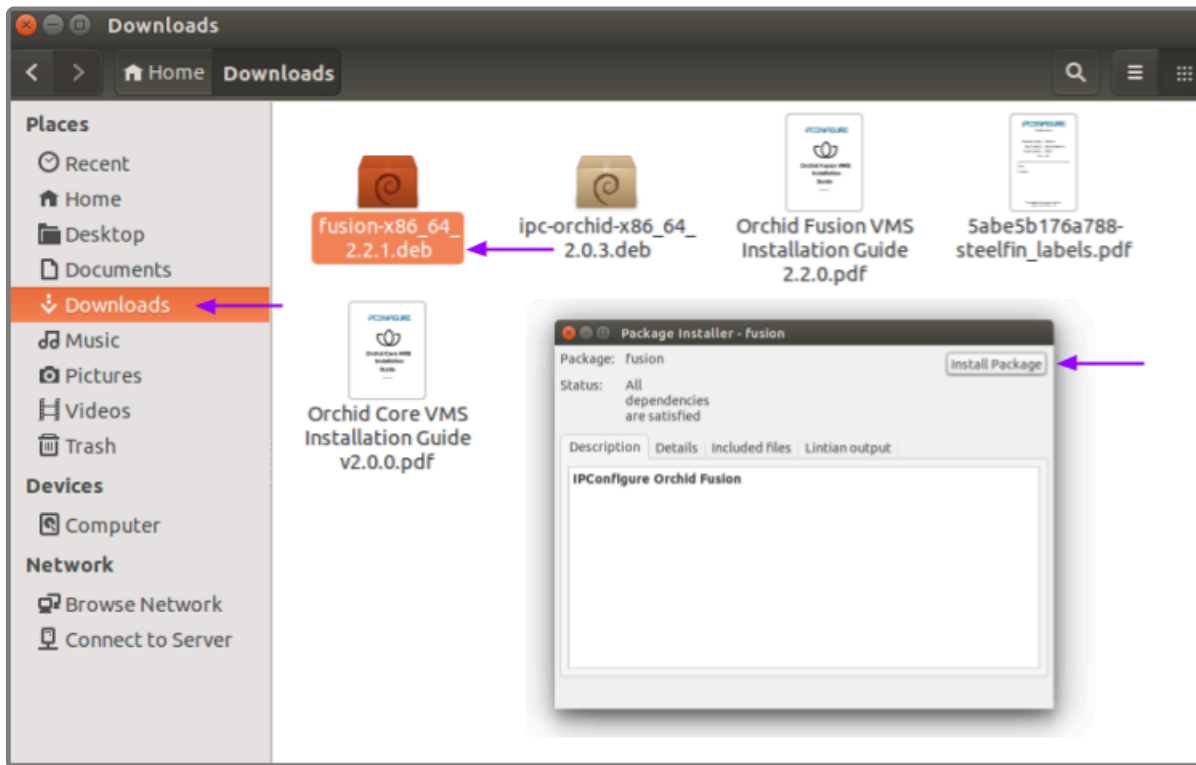
2. Type *Software Center* in the search box, then click the **Ubuntu Software Center** icon listed under *Applications*.



3. In the Software Center search bar (below), type *gdebi*.

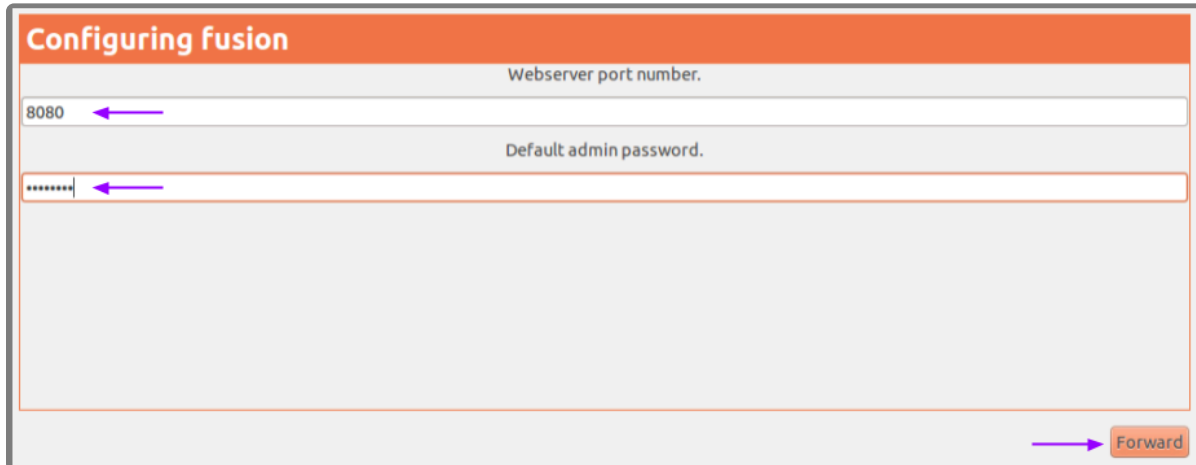


4. Select *GDebi Package Installer (gdebi)*, and then click the **Install** button.
5. After GDebi has finished installing, click the **Files** icon to open the *Files Explorer*, then navigate to the folder storing your Orchid Fusion VMS package (.deb file). (The package is probably stored in the *Downloads* folder.)
6. Right-click on the Orchid Fusion VMS package, hover over *Open With* with the mouse, then select the **GDebi Package Installer** option.
7. Once the GDebi package installer loads, click the **Install Package** button in the top right-hand corner of the window. (You may be asked to enter the administrator password.)



8. You will be asked to accept the End User License Agreement. After you read the agreement, mark the *Do you accept this agreement* checkbox and click the **Forward** button.
9. The installer will ask you to set the web server port and default admin password:
 - By default, the web server port is set to port 8080, which is recommended for most installations. Update the port number only if Orchid Fusion VMS needs to use a port other than 8080.

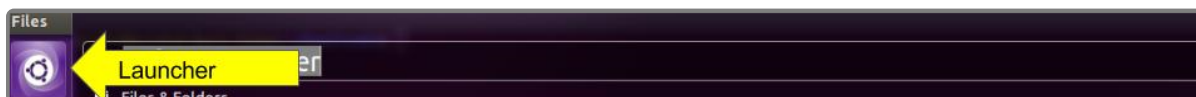
- Enter the password you would like to set for the default admin account.



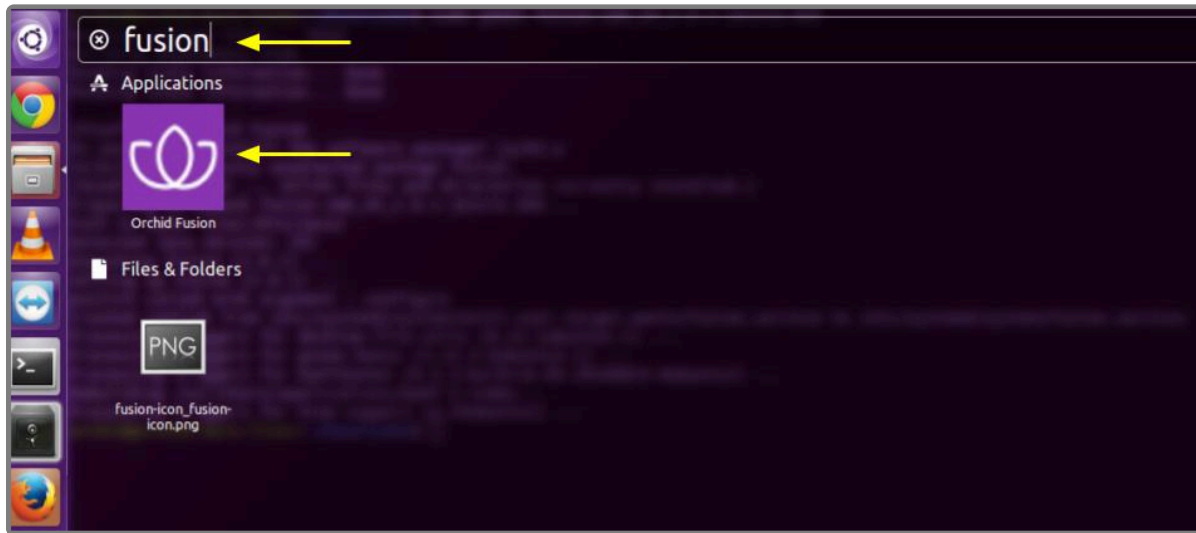
10. When finished, click the **Forward** button.
The installation will complete automatically without any additional prompts. This may take a few minutes.
11. Once the package installer displays an “Installation Finished” message at the top of the screen, click the **Close** button to close the installer and complete the installation. The Orchid Fusion VMS service will start automatically once the package installation is done, after which you can access the Orchid Fusion VMS user interface in your web browser. (For more details on signing in, please refer to the *Enabling...* topics included in the [Installation Support Topics](#) section, and the *Sign In* topic in the [Orchid Fusion VMS Administrator Guide](#).)

You can automatically launch a browser to Orchid Fusion VMS using the menu link installed on your server:

- Click on the **Launcher** icon in the top left corner of the screen.



- Type *fusion* in the search box, then click the **Orchid Fusion** icon listed under *Applications*.



How to Edit a Configuration File in Ubuntu 16.04 to 20.04

If it becomes necessary, you can edit the Orchid Fusion VMS configuration file using standard text editors in Linux. This section will describe two methods for editing the configuration files: using the [Command Line](#) and using the [Graphical User Interface](#) (GUI).

✿ In order to edit text files as the root user, you will need administrator access to the computer on which Orchid Fusion VMS is installed.

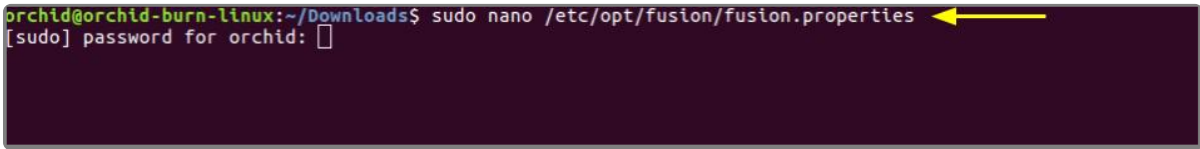
The default location for the Orchid Fusion VMS configuration file in Linux is:

- `/etc/opt/fusion/fusion.properties`
 - Stores all of the Orchid Fusion VMS settings and can be used to update things like the Orchid Fusion VMS port number, manually update the admin password, etc.

Refer to the [Installation Support Topics](#) section for a list of available properties.

Editing Configuration Files Through the Command Line:

1. Open the *Terminal* program (**CTRL+ALT+T**) and open the Orchid Fusion VMS configuration file in the nano text editor by typing the following command: `sudo nano /etc/opt/fusion/fusion.properties`. Then press **Enter**.



```
orchid@orchid-burn-linux:~/Downloads$ sudo nano /etc/opt/fusion/fusion.properties
[sudo] password for orchid: 
```

2. After running that command, you will be prompted to enter the `[sudo] password` for your user. Type the password used to sign in to your computer, then press **Enter**. The configuration file will open.

```

GNU nano 2.5.3                                     File: /etc/opt/fusion/fusion.properties
# http
listening.protocol=http
listening.port=8080
listening.host=0.0.0.0
access.control.headers=authorization, content-type

# other
database.file=/var/lib/fusion/fusion.sqlite
orchid.polling.interval=60

# ssl
ssl.pem=
ssl.key=

#####
### rtsp-proxy #####
#####
rtsp.listening.protocol=rtsp
rtsp.listening.port=9554
rtsp.proxy.transport.protocol=udp
rtsp.session.cleanup.period=-1
rtsp.server.backlog=-1
rtsp.max.threads=-1
rtsp.max.sessions=-1
rtsp.port.range.min=-1
rtsp.port.range.max=-1

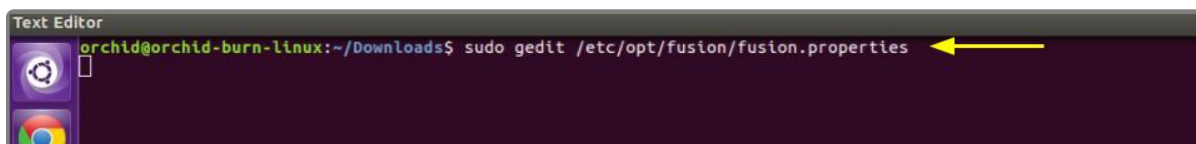
#####
### Authentication #####
#####
# Use either fusion or active directory managed users to login and control user access
# valid values: fusion | active.directory
authentication.mode=fusion

```

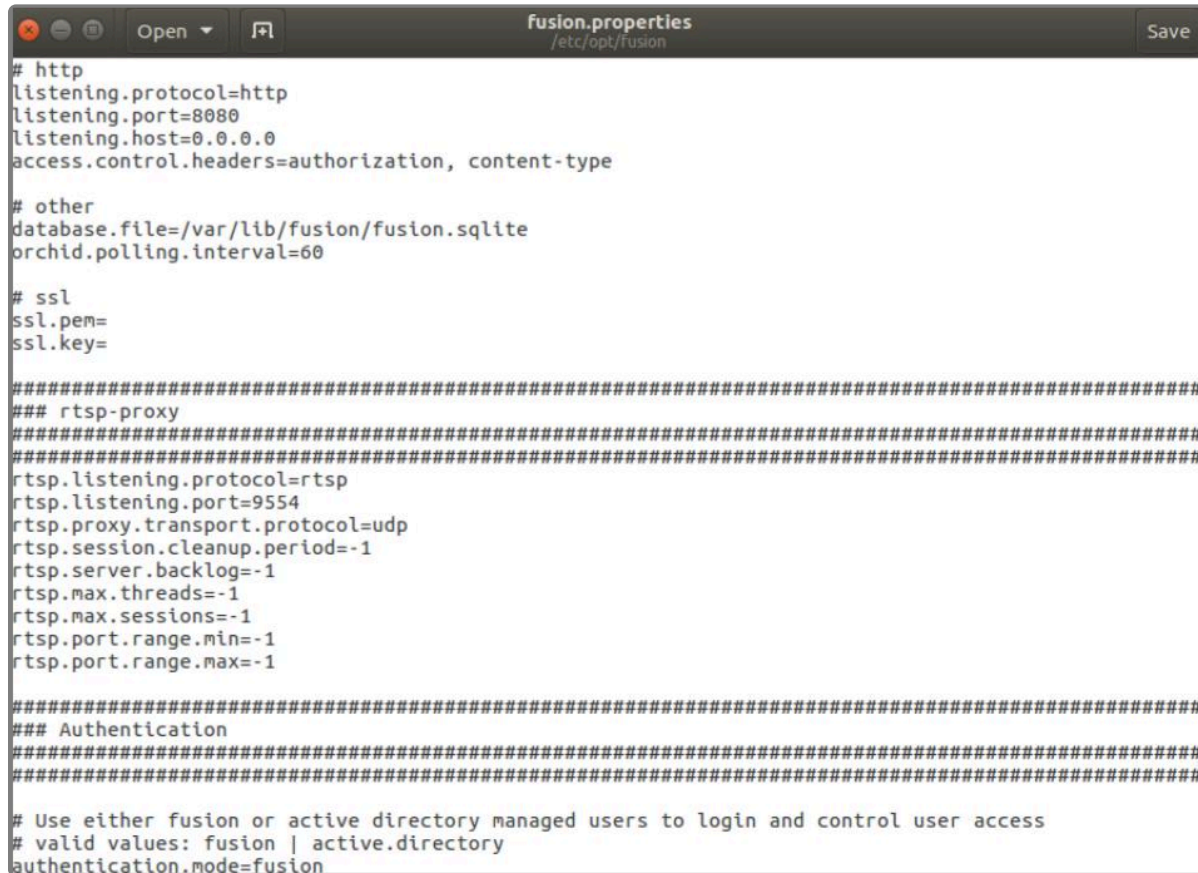
3. Use the arrow keys to move the cursor around the screen and update any default settings. You may also add new settings to the end of the file.
4. When you are ready to save the file, click **CTRL+X** on the keyboard, then type **Y** to save the file and close the text editor. If you do not want to save the file, type **N** (instead of Y) after typing **CTRL+X**.
5. Restart the Orchid Fusion VMS service in Linux to implement the new settings.

Editing Configuration Files Through the GUI:

1. Open the *Terminal* program (**CTRL+ALT+T**) and open Orchid Fusion VMS's configuration file by typing the following command: `sudo gedit /etc/opt/fusion/fusion.properties`. Then press **Enter**.



2. After running that command, you will be prompted to enter your password to perform administrative tasks. Type the same password you use to sign in to your computer, then press **Enter**.
3. A text editor will open in a new window allowing you to edit the configuration file. Update default settings as needed. You may also add new settings to the end of the file.



```

fusion.properties
/etc/opt/fusion

# http
listening.protocol=http
listening.port=8080
listening.host=0.0.0.0
access.control.headers=authorization, content-type

# other
database.file=/var/lib/fusion/fusion.sqlite
orchid.polling.interval=60

# ssl
ssl.pem=
ssl.key=

#####
### rtsp-proxy
#####
rtsp.listening.protocol=rtsp
rtsp.listening.port=9554
rtsp.proxy.transport.protocol=udp
rtsp.session.cleanup.period=-1
rtsp.server.backlog=-1
rtsp.max.threads=-1
rtsp.max.sessions=-1
rtsp.port.range.min=-1
rtsp.port.range.max=-1

#####
### Authentication
#####
# Use either fusion or active directory managed users to login and control user access
# valid values: fusion | active.directory
authentication.mode=fusion

```

4. When you are ready to save the file, click **File/Save**.
5. [Restart](#) the Orchid Fusion VMS service in Linux to implement the new settings.

✿ Beginning with version 2.10, some of the Orchid Core VMS configuration settings can be edited from within the Orchid Fusion VMS user interface. (This is done using the *Advanced Settings* feature which is explained in the [Orchid Fusion VMS Administrator Guide](#).) To edit the Orchid Core VMS configuration file using standard text editors in Linux, please refer to the [Orchid Core VMS Installation Guide](#).

How to Manage the Orchid Fusion VMS Service Through the Command Line

Orchid Fusion VMS runs on Linux as a service. If you need to check the status, start, or stop the service, you can do this from the command line.

- **Fusion:** This service supports the Orchid Fusion VMS server that manages registered Orchid Core VMS servers and provides access to video from those servers.

Tips

- After you've configured your Orchid Fusion VMS properties and started the service, you should check the service status to verify Orchid Fusion VMS is running.
- You will need to restart the service whenever a change has been made to the Orchid Fusion VMS configuration file.

To manage the Orchid Fusion VMS service from the command line:

1. Open the *Terminal* program (**CTRL+ALT+T**).
2. Type the following command: `sudo systemctl (command) fusion.service`, where the *command* is `start`, `stop`, `restart`, or `status`. Then press **Enter**.

```
orchid@orchid-burn-linux:~/Downloads$ sudo systemctl start fusion.service  
orchid@orchid-burn-linux:~/Downloads$
```

```
orchid@orchid-burn-linux:~/Downloads$ sudo systemctl stop fusion.service  
orchid@orchid-burn-linux:~/Downloads$
```

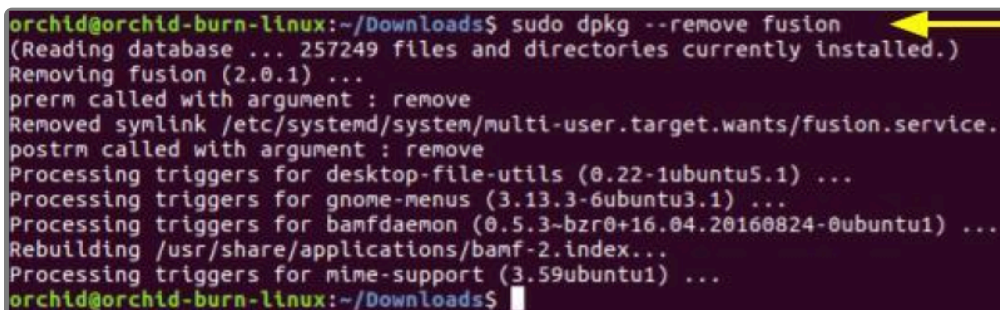
```
orchid@orchid-burn-linux:~/Downloads$ sudo systemctl restart fusion.service  
orchid@orchid-burn-linux:~/Downloads$
```

```
orchid@orchid-burn-linux:~/Downloads$ sudo systemctl status fusion.service  
● fusion.service - Orchid Fusion Video Management System  
  Loaded: loaded (/etc/systemd/system/fusion.service; enabled; vendor preset: enabled)  
  Active: active (running) since Thu 2017-08-24 11:37:14 EDT; 7min ago  
    Main PID: 11754 (java)  
     CGroup: /system.slice/fusion.service  
             └─11754 java -classpath /opt/fusion/lib/fusion-2.0.1.jar:/opt/fusion/lib/Fusion_F
```

Uninstalling Orchid Fusion VMS in Ubuntu 16.04 to 20.04

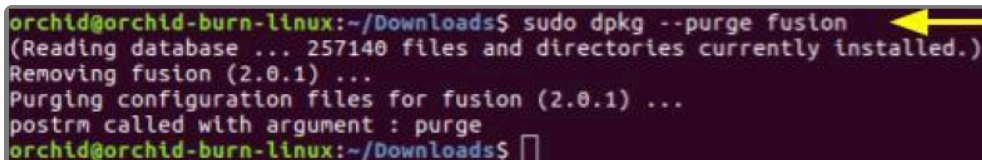
There are a couple of options for removing the Orchid Fusion VMS software. The *Remove* command will uninstall all files installed and created by Orchid Fusion VMS except the configuration files and the database. The *Purge* command will uninstall all files installed and created by Orchid Fusion VMS.

1. Open the *Terminal* program (**CTRL+ALT+T**).
2. To uninstall Orchid Fusion VMS, use either step 3 or step 4 below.
3. To uninstall Orchid Fusion VMS (while keeping the configuration files and the database), type the following command: `sudo dpkg --remove fusion`. Enter the password when prompted to do so, then press **Enter**.



```
orchid@orchid-burn-linux:~/Downloads$ sudo dpkg --remove fusion
(Reading database ... 257249 files and directories currently installed.)
Removing fusion (2.0.1) ...
prerm called with argument : remove
Removed symlink /etc/systemd/system/multi-user.target.wants/fusion.service.
postrm called with argument : remove
Processing triggers for desktop-file-utils (0.22-1ubuntu5.1) ...
Processing triggers for gnome-menus (3.13.3-6ubuntu3.1) ...
Processing triggers for bamfdaemon (0.5.3-bzr0+16.04.20160824-0ubuntu1) ...
Rebuilding /usr/share/applications/bamf-2.index...
Processing triggers for mime-support (3.59ubuntu1) ...
orchid@orchid-burn-linux:~/Downloads$
```

4. To uninstall all of the Orchid Fusion VMS files, type the following command: `sudo dpkg --purge fusion`. Enter the password when prompted to do so, then press **Enter**.



```
orchid@orchid-burn-linux:~/Downloads$ sudo dpkg --purge fusion
(Reading database ... 257140 files and directories currently installed.)
Removing fusion (2.0.1) ...
Purging configuration files for fusion (2.0.1) ...
postrm called with argument : purge
orchid@orchid-burn-linux:~/Downloads$
```


Working in Red Hat

IPConfigure distributes Orchid Fusion VMS for Red Hat using an .rpm file. Use this file to install Orchid Fusion VMS on systems running Red Hat Enterprise Linux versions 7 and 8, and CentOS versions 7 and 8.



You must sign in to the computer as a user with “root” access.



Beginning with Orchid Fusion VMS version 2.10.0, if you are performing an upgrade of your Orchid Fusion VMS, you should check to make sure that all of the registered Orchid Core VMS servers are running, at minimum, Orchid Core VMS version 2.8.0. (You will receive a warning message during the installation if this is not the case.)

Installing Orchid Fusion VMS in Red Hat Enterprise Linux 7

The following installation instructions provided for Red Hat Enterprise Linux 7 also apply to Red Hat Enterprise Linux 8, CentOS 7, and CentOS 8.

There are a couple of steps you will need to perform to prepare to install Orchid Fusion VMS.

1. You will need to install Java 8 before you install Fusion. Type each of the following commands, pressing **Enter** after each. (The screenshot that follows shows the initial command and the system response.)

- `sudo yum install java-1.8.0-openjdk`

After this command, if the system is upgrading, you may receive a message that requests if you want to continue and use the additional space required. Respond by pressing **Y**.

- `sudo update-alternatives --config java`

If only one version of Java is present on your server, the last command above will do nothing. If more than one version is present, select Java 8 when prompted by the last command.

```

orchid-burn-rhel@ipconfigure.com - PuTTY
orchid @ orchid-burn-rhel.ipconfigure.com (linux x86_64) [-]
$ sudo yum install java-1.8.0-openjdk
Loaded plugins: langpacks, product-id, search-disabled-repos, subscription-
: manager
epel/x86_64/metalink | 18 kB 00:00
epel | 5.3 kB 00:00
nodesource | 2.5 kB 00:00
rhel-7-server-rpms | 3.5 kB 00:00
(1/4): epel/x86_64/updateinfo | 1.0 MB 00:00
(2/4): epel/x86_64/primary_db | 6.8 MB 00:00
(3/4): rhel-7-server-rpms/7Server/x86_64/updateinfo | 3.7 MB 00:00
(4/4): rhel-7-server-rpms/7Server/x86_64/primary_db | 70 MB 00:05
Resolving Dependencies
There are unfinished transactions remaining. You might consider running yum-
complete-transaction, or "yum-complete-transaction --cleanup-only" and "yum hist
redo last", first to finish them. If those don't work you'll have to try rem
g/installing packages by hand (maybe package-cleanup can help).
--> Running transaction check
--> Package java-1.8.0-openjdk.x86_64 1:1.8.0.252.b09-2.el7_8 will be insta
--> Processing Dependency: java-1.8.0-openjdk-headless(x86-64) = 1:1.8.0.252
-2.el7_8 for package: 1:java-1.8.0-openjdk-1.8.0.252.b09-2.el7_8.x86_64
--> Running transaction check
--> Package java-1.8.0-openjdk-headless.x86_64 1:1.8.0.252.b09-2.el7_8 will
installed
--> Finished Dependency Resolution

Dependencies Resolved

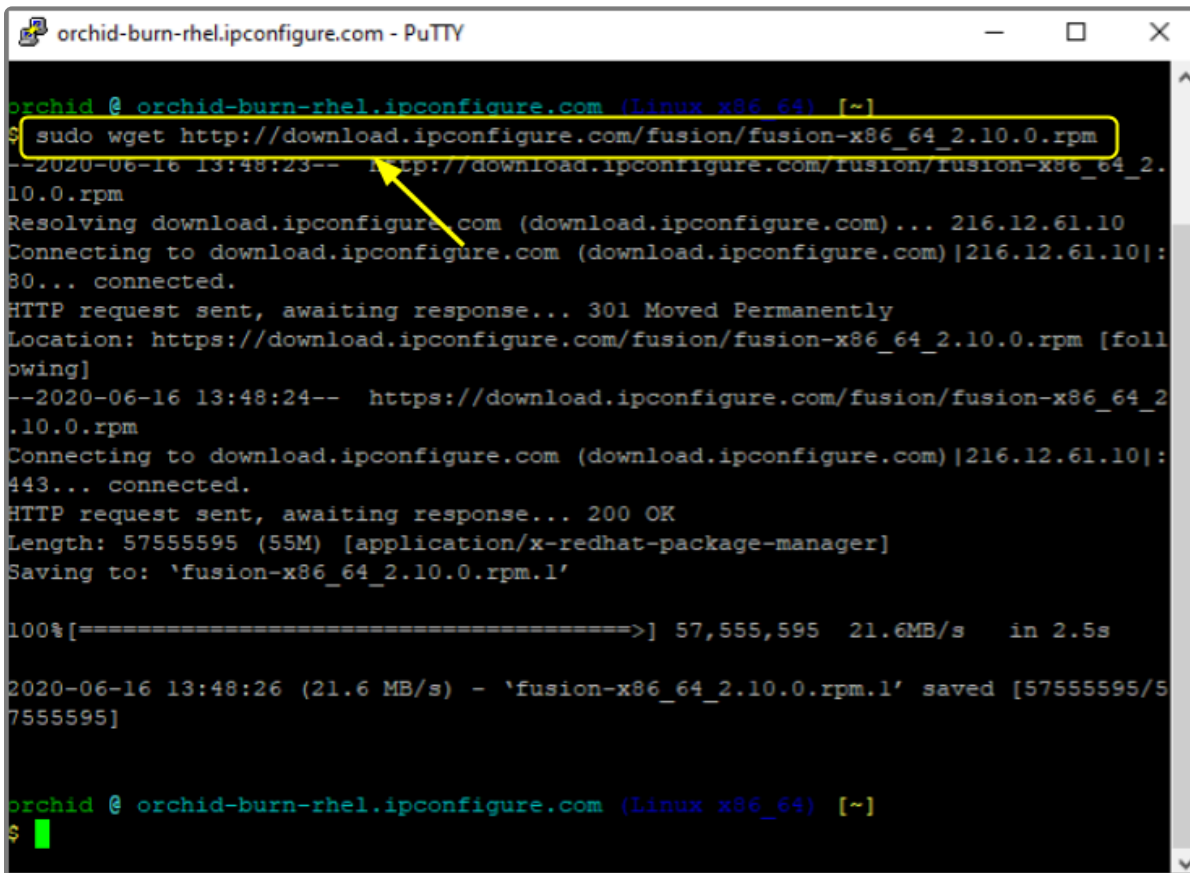
-----
Package Arch Version Repository Size
-----
Installing:
java-1.8.0-openjdk x86_64 1:1.8.0.252.b09-2.el7_8 rhel-7-server-rpms 29
Installing for dependencies:
java-1.8.0-openjdk-headless
x86_64 1:1.8.0.252.b09-2.el7_8 rhel-7-server-rpms 3
Transaction Summary
-----
Install 1 Package (+1 Dependent package)

Total download size: 32 M
Installed size: 108 M
Is this ok [y/d/N]: y

```

Installing Orchid Fusion VMS in RedHat

1. To obtain the Orchid Fusion VMS installation package (.rpm file), do either of the following:
 - Use a web browser to obtain the file from the IPConfigure web site.
 - Type the following command at the *Terminal* screen: `sudo wget http://download.ipconfigure.com/fusion/fusion-x86_64_(VERSION).rpm`, where *VERSION* is the software version number. Then press **Enter**.



```
orchid-burn-rhel.ipconfigure.com - PuTTY
orchid @ orchid-burn-rhel.ipconfigure.com (Linux x86_64) [~]
$ sudo wget http://download.ipconfigure.com/fusion/fusion-x86_64_2.10.0.rpm
--2020-06-16 13:48:23-- http://download.ipconfigure.com/fusion/fusion-x86_64_2.
10.0.rpm
Resolving download.ipconfigure.com (download.ipconfigure.com)... 216.12.61.10
Connecting to download.ipconfigure.com (download.ipconfigure.com)[216.12.61.10]:
80... connected.
HTTP request sent, awaiting response... 301 Moved Permanently
Location: https://download.ipconfigure.com/fusion/fusion-x86_64_2.10.0.rpm [foll
owing]
--2020-06-16 13:48:24-- https://download.ipconfigure.com/fusion/fusion-x86_64_2
.10.0.rpm
Connecting to download.ipconfigure.com (download.ipconfigure.com)[216.12.61.10]:
443... connected.
HTTP request sent, awaiting response... 200 OK
Length: 57555595 (55M) [application/x-redhat-package-manager]
Saving to: 'fusion-x86_64_2.10.0.rpm.1'

100%[=====>] 57,555,595  21.6MB/s  in 2.5s

2020-06-16 13:48:26 (21.6 MB/s) - 'fusion-x86_64_2.10.0.rpm.1' saved [57555595/5
7555595]

orchid @ orchid-burn-rhel.ipconfigure.com (Linux x86_64) [~]
$
```

2. Install Orchid Fusion VMS by typing the following command: `sudo yum install fusion-x86_64_4_(VERSION) .rpm`, where *VERSION* is the software version number. Then press **Enter**.



```
orchid-burn-rhel.ipconfigure.com - PuTTY
orchid @ orchid-burn-rhel.ipconfigure.com (Linux x86_64) [~]
$ sudo yum install fusion-x86_64_2.10.0.rpm
```

- Beginning with Orchid Fusion VMS version 2.10.0, if you are performing an upgrade of your Orchid Fusion VMS, the installer will check the Orchid Core VMS version numbers on each of the registered Orchid Core VMS servers. If any of the registered servers have an Orchid Core VMS version number older than 2.8.0, you will receive a warning message similar to the one pictured here.



Orchid Fusion VMS Setup will ask if you want to continue with the installation. IPConfigure recommends that you select **No**, and upgrade any Orchid Core VMS servers that don't meet the minimum version requirement. When all of your Orchid Core VMS upgrades are complete, return to step 2 to install the new Orchid Fusion VMS.

This will install all necessary files for Orchid Fusion VMS and the Orchid Fusion VMS service. By default, the service will *not* be started. (For details on working with the service, please refer to the [How to Manage the Orchid Fusion VMS Service](#) section.)

3. Press the **Y** key and **Enter** to accept the EULA, or **N** to decline.
4. After the installation is complete, you must set the admin password in the configuration file. (Refer to the next section for details.)

How to Edit a Configuration File in Red Hat

Orchid Fusion VMS uses a configuration file to store all of the system settings. This file may be edited to revise settings such as the Orchid Fusion VMS port number, the admin password, etc. Right after installation, you must set the admin password in the configuration file before you run the software. You can edit the Orchid Fusion VMS configuration file using your favorite text editor. (If you don't have a favorite, try nano.)

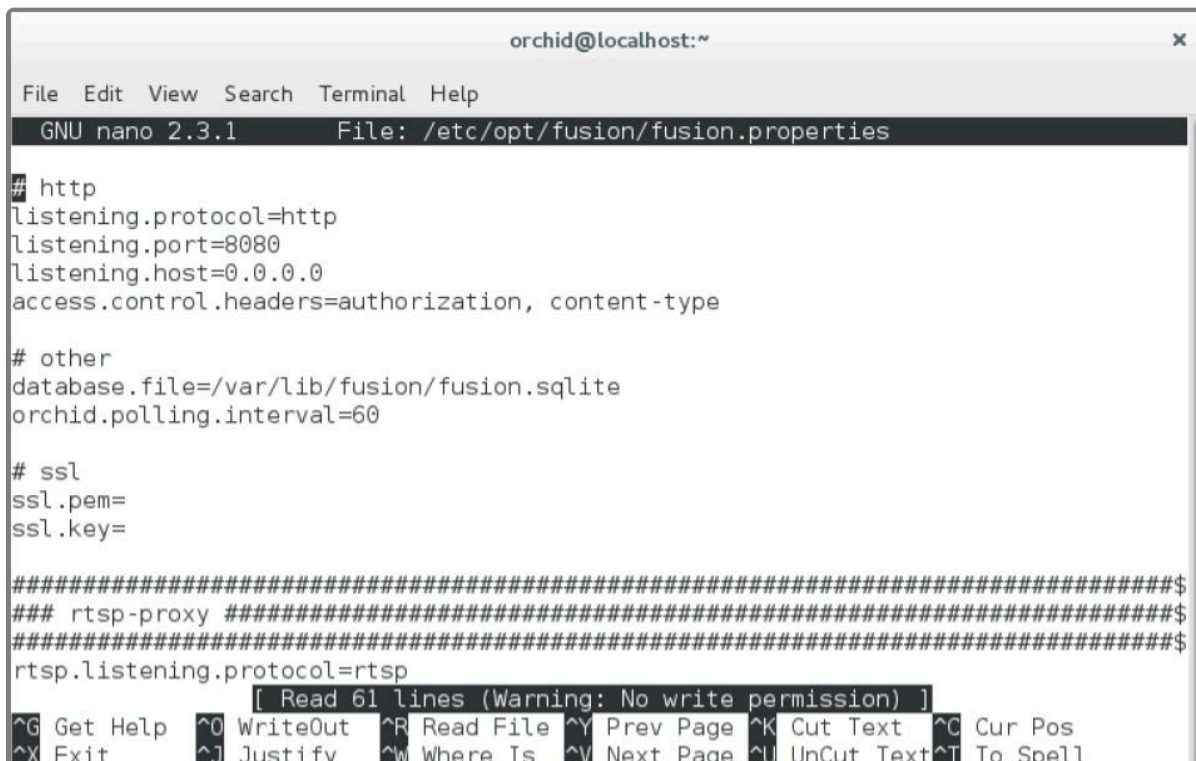
✿ You must sign in to the computer as a user with “root” access.

The default location for the Orchid Fusion VMS configuration file in Linux is:

- `/etc/opt/fusion/fusion.properties`

Refer to the [Installation Support Topics](#) section for a list of available properties.

1. Open the *Terminal* program (**CTRL+ALT+T**).
2. Open the Orchid Fusion VMS configuration file in the nano text editor by typing the following command: `nano /etc/opt/fusion/fusion.properties`. Then press **Enter**:

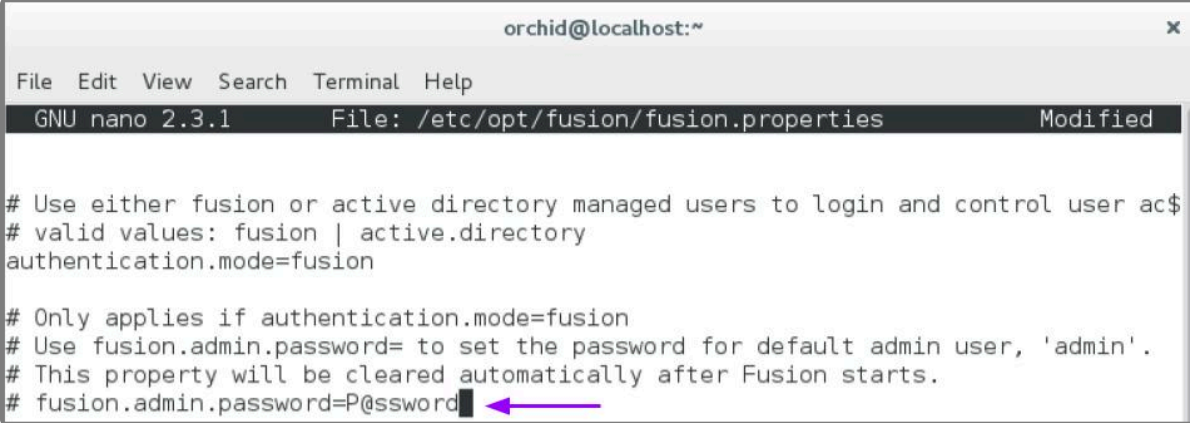


```
orchid@localhost:~  
File Edit View Search Terminal Help  
GNU nano 2.3.1 File: /etc/opt/fusion/fusion.properties  
# http  
listening.protocol=http  
listening.port=8080  
listening.host=0.0.0.0  
access.control.headers=authorization, content-type  
  
# other  
database.file=/var/lib/fusion/fusion.sqlite  
orchid.polling.interval=60  
  
# ssl  
ssl.pem=  
ssl.key=  
  
#####  
## rtsp-proxy #####  
#####  
rtsp.listening.protocol=rtsp  
[ Read 61 lines (Warning: No write permission) ]  
^G Get Help ^O WriteOut ^R Read File ^Y Prev Page ^K Cut Text ^C Cur Pos  
^X Exit ^J Justify ^W Where Is ^V Next Page ^U UnCut Text ^T To Spell
```

3. Scroll down to review or set the Orchid Fusion VMS admin password (below). It will take effect only when Orchid Fusion VMS is started for the first time [typically meaning that the Orchid Fusion VMS database (at `/var/lib/fusion/fusion.sqlite`) does not exist when Orchid Fusion VMS starts].

fusion.admin.password

Sets the admin password used upon first sign in. After the first sign in, the admin password can be changed via the user interface.



```
orchid@localhost:~  
File Edit View Search Terminal Help  
GNU nano 2.3.1 File: /etc/opt/fusion/fusion.properties Modified  
  
# Use either fusion or active directory managed users to login and control user ac$  
# valid values: fusion | active.directory  
authentication.mode=fusion  
  
# Only applies if authentication.mode=fusion  
# Use fusion.admin.password= to set the password for default admin user, 'admin'.  
# This property will be cleared automatically after Fusion starts.  
# fusion.admin.password=P@ssword
```

4. Review or edit the remainder of the parameters as needed.
5. [Restart](#) the Orchid Fusion VMS service to implement the new settings.

✿ Beginning with version 2.10, some of the Orchid Core VMS configuration settings can be edited from within the Orchid Fusion VMS user interface. (This is done using the *Advanced Settings* feature which is explained in the [Orchid Fusion VMS Administrator Guide](#).) To edit the Orchid Core VMS configuration file using standard text editors in Linux, please refer to the [Orchid Core VMS Installation Guide](#).

How to Manage the Orchid Fusion VMS Service in Red Hat

Orchid Fusion VMS runs on Red Hat as a service. If you need to enable, check the status, start, or stop the service, you can do this from the command line.


- **Fusion:** This service supports the Orchid Fusion VMS server that manages registered Orchid Core VMS servers and provides access to video from those servers.

Tips

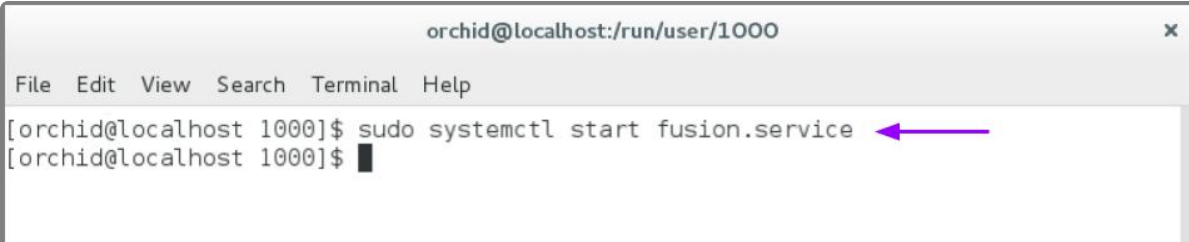
- In Red Hat, you have to enable the Orchid Fusion VMS service. This will allow the service to automatically start on bootup and restart in the case of failure.
- After you start the service, you should configure the firewall.
- After you've configured your Orchid Fusion VMS properties and started the service, you should check the service status to verify Orchid Fusion VMS is running.
- You will need to restart the service whenever a change has been made to the Orchid Fusion VMS configuration file.

To manage the Orchid Fusion VMS service:

1. Type the following command: `sudo systemctl (command) fusion.service`, where the *command* is `enable`, `start`, `stop`, or `status`. Then press **Enter**.



```
orchid@localhost:~  
File Edit View Search Terminal Help  
[orchid@localhost ~]$ sudo systemctl enable fusion.service  
Created symlink from /etc/systemd/system/multi-user.target.wants/fusion.service to  
/etc/systemd/system/fusion.service.  
[orchid@localhost ~]$
```



```
orchid@localhost:/run/user/1000  
File Edit View Search Terminal Help  
[orchid@localhost 1000]$ sudo systemctl start fusion.service  
[orchid@localhost 1000]$
```

```
orchid@localhost:~  
File Edit View Search Terminal Help  
[orchid@localhost ~]$ sudo systemctl stop fusion.service  
[orchid@localhost ~]$
```

```
orchid@localhost:~  
File Edit View Search Terminal Help  
[orchid@localhost ~]$ sudo systemctl status fusion.service  
● fusion.service - Orchid Fusion Video Management System  
   Loaded: loaded (/etc/systemd/system/fusion.service; enabled; vendor preset: disabled)  
   Active: active (running) since Thu 2017-08-24 10:02:25 EDT; 1min 25s ago  
 Main PID: 27409 (java)  
    CGroup: /system.slice/fusion.service  
            └─27409 java -classpath /opt/fusion/lib/fusion-2.0.1.jar:/opt/fusion/...
```


Post-Installation Steps in Red Hat

Configure the Firewall

By default, the *firewalld* service will block access to Orchid Fusion VMS. Refer to the [Installation Support Topics](#) for a list of the ports used by Orchid Fusion VMS, and consult your RHEL 7 documentation for configuring *firewalld*. The following example will open default ports used by Orchid Fusion VMS, but you should understand the security implications of modifying your firewall settings before proceeding.

```
sudo firewall-cmd --zone=public --add-port=8080/tcp --permanent
sudo firewall-cmd --zone=public --add-port=9554/tcp --permanent
sudo firewall-cmd --zone=public --add-port=40000-50000/udp --permanent
sudo firewall-cmd --reload
```


How to Sign In to Orchid Fusion VMS in Red Hat

Sign in to Orchid Fusion VMS using a web browser pointed to your server's IP address at the port specified in the configuration file (default is 8080). Unless changed during the configuration process, the default sign in credentials are *admin* and *password*. (For more details on signing in, please refer to the *Enabling...* topics included in the *Installation Support Topics* section, and the *Sign In* topic in the [Orchid Fusion VMS Administrator Guide](#).)

Uninstalling the Orchid Fusion VMS Package in Red Hat

1. To remove the Orchid Fusion VMS package, type the following command: `sudo rpm -e fusion-(version).x86_64`, where *version* is the software version number. Then press **Enter**.

(This will remove all files installed and created by Orchid Fusion VMS.)

A terminal window titled "orchid@localhost:~" with a standard Linux menu (File, Edit, View, Search, Terminal, Help). The command "sudo rpm -e fusion-2.0.1.x86_64" is entered and executed, as indicated by a purple arrow. The output shows the service being disabled, stopped, and removed.

```
orchid@localhost:~  
File Edit View Search Terminal Help  
[orchid@localhost ~]$ sudo rpm -e fusion-2.0.1.x86_64  
fusion.service disabled  
fusion.service stopped  
fusion.service removed  
[orchid@localhost ~]$
```

Installation Support Topics

As you work with Orchid Fusion VMS, you may encounter issues that are not typical of daily operation and should be addressed by an advanced user. Please review these topics if you need extra help. For in-depth explanations and additional topics, we encourage you to check our [Knowledge Base](#).

Orchid Fusion VMS Configuration Settings

Orchid Fusion VMS uses a configuration file (*fusion.properties*) and a logging file (*logback.xml*). These files contain settings that don't change on a regular basis, and are reserved for those with administrator access. If a change to the configuration settings is required, please refer to the appropriate section (such as *Working in Windows* or *Working in Ubuntu 16.04*) earlier in this *Installation Guide*.

Orchid Fusion VMS's configuration settings are included below.

Web Server Settings

listening.protocol

Possible values include **http** and **https**. (The *ssl.pem* and *ssl.key* also need to be set. See [SSL Properties](#).)

listening.port

Port number of the web server.

html.dir

Root path to the Orchid Fusion VMS HTML files.

listening.host

Listening address (0.0.0.0 binds to all network interfaces).

access.control.headers

CORS Access-Control-Allow-Headers

SSL Properties

ssl.pem

Full path to the PEM encoded TLS certificate file.

ssl.key

Full path to the PEM encoded RSA key.

Database Settings

database.file

The sqlite database file.

Fusion Server Settings

orchid.polling.interval

Number of seconds between Orchid Core VMS data sync.

fusion.admin.password

Updates the admin password (removed from the file after parsed). Prior to version 2.0.0, this was **new.password**.

fusion.username.enabled

This allows for the creation of a new user. (Set this to **True** and set the password property below to create a new user. Set this to **False** to delete a Fusion user.)

fusion.username.password

This may be used to reset the password of any user, or to create a new user (when combined with the *enabled* property above).

fusion.username.superuser

This allows for the promotion of any user to superuser status. (Set this to **True** to create a new superuser. Set this to **False** to revoke superuser status.)

pages.orchids.size

Sets the number of Orchid Core VMS servers that will be displayed per page (on the *Servers* screen). The default is **10**.

fusion.public.url

This optional setting may be used to set a custom, public URL for the Fusion server. Starting with version 2.6.2, this public URL will be displayed in *Notification* emails. In prior versions, the *Notification* emails displayed an IP address (which was not always helpful in identifying the source of the problem).

RTSP Proxy Server Settings

rtsp.listening.protocol

Options are as follows:

- **rtsp**
Default – Orchid Fusion VMS UI will access the streams via UDP.
- **rtspt**
Orchid Fusion VMS UI will access the streams via TCP-interleaved.
- **rtspS**
Orchid Fusion VMS UI will access the streams via UDP SRTP. (Secure — *ssl.pem* and *ssl.key* must be set)

- **rtspst**

Orchid Fusion VMS UI will access the streams via TCP-interleaved TLS. (Secure tcp — ssl.pem and ssl.key must be set)

rtsp.listening.port

The port the rtsp proxy listens on (default 9554)

rtsp.proxy.transport.protocol

This is the RTSP transport protocol between Orchid Fusion VMS and Orchid Core VMS. Options are:

- **udp**

Default

- **tcp**

- **http**

(http only works with target Orchid Core VMS servers running rtsp)

rtsp.session.cleanup.period

Number of seconds between checking to cleanup inactive sessions. Default is **1**.

rtsp.server.backlog

The maximum amount of queued requests for the server. Default is **1**.

rtsp.max.threads

The maximum number of threads used by the pool to handle client requests. A value of **0** will use the pool mainloop; a value of **-1** will use an unlimited number of threads. The default is **-1** for no maximum.

rtsp.max.sessions

The maximum allowed number of simultaneous connects. A value of **-1** allows an unlimited number of sessions. Default is **-1**.

rtsp.port.range.min

Sets the minimum RTP port range. A value of **-1** allows an unlimited range.

rtsp.port.range.max

Sets the maximum RTP port range. A value of **-1** allows an unlimited range.

Sign In Options

Beginning with version 2.0.0, Orchid Fusion VMS offers multiple ways to sign in. Important information regarding the configuration file is included below.



For more detailed instructions on enabling alternative sign in methods, please refer to the

following sections: * [Enabling Google Authentication](#) * [Enabling Active Directory](#) * [Enabling Azure Active Directory](#) * [Enabling FreeIPA Authentication](#) *

Google Authentication

Enabling Google sign in requires an *OAuth client ID* for Orchid Fusion VMS that is generated by Google. For more information, please refer to <https://console.developers.google.com/apis/credentials>.

google.auth.clientid

This property enables Google sign in. (For example: **google.auth.clientid=<your client id>**)

Active Directory

To use Active Directory authentication, you must already have an Active Directory server with at least one Active Directory group with one Active Directory user. The following properties will also need to be configured, as noted.

authentication.active.directory.servers

This command identifies the active directory server. If there are more than one, use a comma to separate multiple server addresses.

authentication.active.directory.admin.groups

This property was previously required to initialize admin access and provides a comma-separated list of groups for each domain. This property is now optional. You may use the Orchid Fusion VMS user interface to add Active Directory Administrator groups.

authentication.active.directory.referral.mode

This property allows authentication to follow references to another server. Values include **follow** (the default), **ignore**, and **throw**.

Azure Active Directory

To use Azure Active Directory authentication, you must create an Azure Active Directory App. (Please refer to Microsoft documentation for the most up-to-date instructions.). The following properties will also need to be configured, as noted.

authentication.azure.active.directory.clientid

This property provides the Application ID assigned to your App when you registered it with Azure Active Directory.

authentication.azure.active.directory.clientsecret

This property provides the application secret that you saved after creating it in the Azure Portal.

authentication.azure.active.directory.endpoint

This property provides the Microsoft OAuth 2.0 Authorize Endpoint assigned to your App when you registered it with Azure Active Directory.

authentication.azure.active.directory.domain

This property defines the domain associated with this Azure Active Directory instance. This can be anything, but in most cases should match the domain into which users are logging in. For example, for users logging in as *<Users>@ipconfigure.com*, the appropriate domain setting would be **ipconfigure.com**.

FreeIPA Authentication

To use FreeIPA authentication, you must already have a FreeIPA server with at least one FreeIPA group with one user. The following properties will also need to be configured, as noted.

authentication.freeipa.servers

This property provides a list of authentication domains from FreeIPA.

authentication.freeipa.domain.userdn

This property sets the base domain name used when authenticating a FreeIPA user. (This is an advanced FreeIPA option that will only need to be defined if the users are located somewhere other than the domains defined in the property above.)

All LDAP Authenticators (Active Directory, FreeIPA)

Orchid Fusion VMS uses the LDAP protocol to communicate with both Active Directory and FreeIPA servers. You may need to define the property below (as noted).

authentication.domain.alias

This property provides a list of alternate domain names for servers registered with Active Directory or FreeIPA. (This is an advanced setting that will only be needed if the users are signing in to an “alias” domain for Active Directory or FreeIPA.)

Java Versions Required for Orchid Fusion VMS

Java version 8 is required for Orchid Fusion VMS on all of the supported operating systems. The products used to implement the Java platform, and the exact delivery, however, will vary. Please refer to the following table for details.

	Java Product	Bundled with Orchid Fusion VMS	Installs Automatically
Windows	Oracle JDK 8	Yes	Yes
Ubuntu 14.04	Any Java 8 JRE	No	No
Ubuntu 16.04	Any Java 8 JRE	No	No
Ubuntu 18.04	Any Java 8 JRE	No	No
Ubuntu 20.04	Any Java 8 JRE	No	No
Red Hat 7	Any Java 8 JRE	No	No
Red Hat 8	Any Java 8 JRE	No	No
CentOS 7	Any Java 8 JRE	No	No
CentOS 8	Any Java 8 JRE	No	No
Debian Jessie (ARMv7)	Any Java 8 JRE	No	No
Raspbian Jessie (Raspberry Pi)	Any Java 8 JRE	No	No

How to Edit the Java Options File in Linux

Beginning with version 2.4.0, Orchid Fusion VMS contains a Java Options file that may be used for additional system configuration. If it becomes necessary, you can edit the Java Options file using a standard text editor in Linux. This section will describe how to edit the Java Options file from the command line.

✿ This file should only be modified by a knowledgeable administrator.

✿ In order to edit a text file as the root user, you will need administrator access to the computer on which Orchid Fusion VMS is installed.

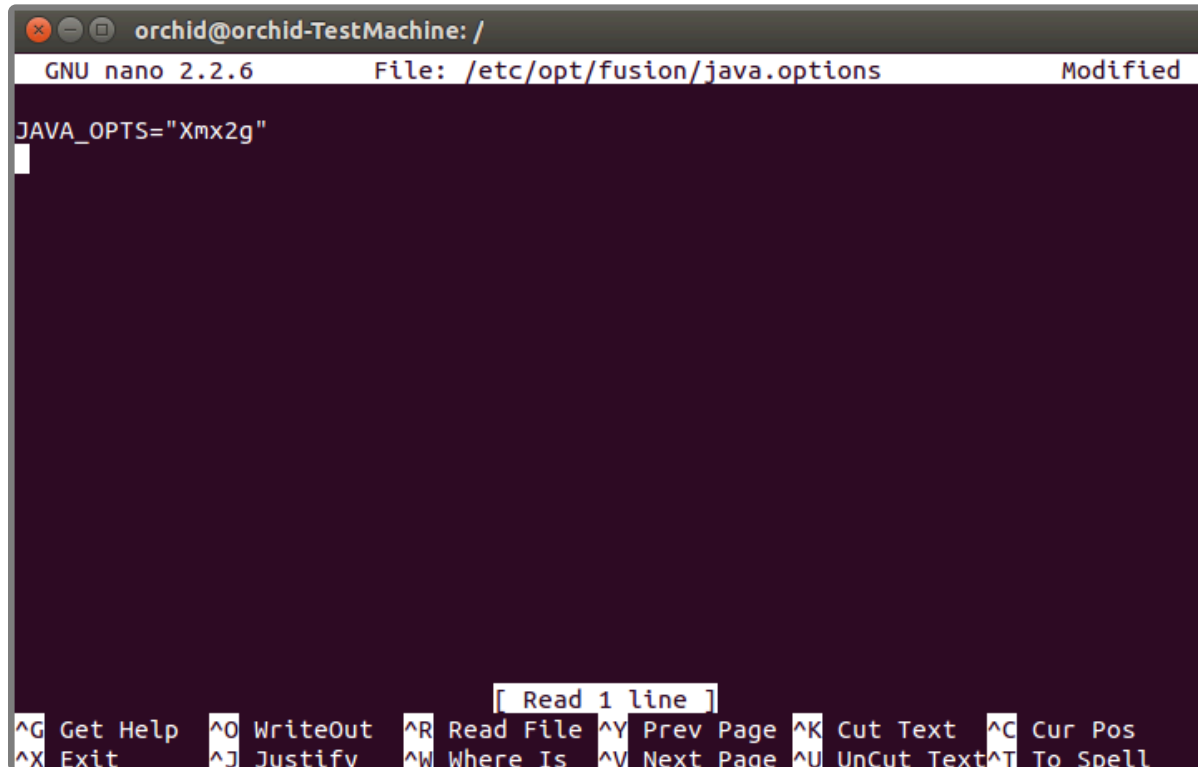
The default location for the Java Options file in Linux is:

- `/etc/opt/fusion/java.options`
 - This file contains the variable **JAVA_OPTS**. By default, this variable is empty, but experienced administrators may use this variable to set Java/JVM related parameters.

Editing the Java Options File from the Command Line:

1. Open the *Terminal* program (**CTRL+ALT+T**).
2. Open the Java Options file in a text editor (such as nano) by typing the following command: `sudo nano /etc/opt/fusion/java.options`. Then press **Enter**.

The file will open to display one variable: **JAVA_OPTS**. This variable will initially be blank, but may be modified to define one or more settings. In the example below, the variable is modified to **-Xmx2g** (which sets the JVM maximum heap size to 2 gibibytes).



```
orchid@orchid-TestMachine: /
GNU nano 2.2.6      File: /etc/opt/fusion/java.options      Modified
JAVA_OPTS="Xmx2g"
[ Read 1 line ]
^G Get Help  ^O WriteOut  ^R Read File  ^Y Prev Page  ^K Cut Text   ^C Cur Pos
^X Exit      ^J Justify   ^W Where Is   ^V Next Page  ^U UnCut Text ^T To Spell
```

3. Modify the Java Options file as needed.
4. When you are ready to save the file, click **CTRL+X** on the keyboard, then type **Y** to save the file and close the text editor. If you do not want to save the file, type **N** (instead of Y) after typing **CTRL+X**.
5. Restart the Orchid Fusion service in Linux to implement the new settings. (If you need extra help, refer back to the *How to Manage the Orchid Fusion VMS Service* section that corresponds to the operating system you are using.)
6. Once the restart is complete, you can sign into Orchid Fusion VMS.

Orchid Fusion VMS Firewall/Ports Configuration

This topic describes all of the network ports used by Orchid Fusion VMS and which configuration properties allow you to change each port.

Required External Ports

This port is *required* to access Orchid Fusion VMS in any configuration.

- Web server TCP port
 - Default: **8080**
 - Configuration property: **listening.port** (number between 1 and 65535.)

Optional External Ports

Orchid Fusion VMS's RTSP server ports may be configured with the optional parameters below. The RTSP server is not used by the Orchid Core VMS or Orchid Fusion VMS user interfaces, but may be used by certain third-party integrations or other applications.

- RTSP TCP port
 - Default: **9554**
 - Configuration property: **rtsp.listening.port** (number between 1 and 65535)
- RTP UDP port range
 - Defaults: **-1** (any port)
 - Configuration properties:
 - **rtsp.port.range.min** (number between 1 and 65535)
 - **rtsp.port.range.max** (number between 1 and 65535)

RTSP Configuration Properties

The following two settings are related to Orchid Fusion VMS's Proxy mode (which provides a workaround when the Orchid Core VMS server is not directly accessible to your web browser).

- **rtsp.listening.protocol**
Options are as follows:
 - **rtsp**
Default – Orchid Fusion VMS UI will access the streams via UDP.
 - **rtspt**
Orchid Fusion VMS UI will access the streams via TCP-interleaved.

- **rtsp**

Orchid Fusion VMS UI will access the streams via UDP SRTP. (Secure — ssl.pem and ssl.key must be set)

- **rtspst**

Orchid Fusion VMS UI will access the streams via TCP-interleaved TLS. (Secure tcp — ssl.pem and ssl.key must be set)

- **rtsp.proxy.transport.protocol**

This is the RTSP transport protocol between Orchid Fusion VMS and Orchid Core VMS. Options are:

- **udp**

Default

- **tcp**

- **http**

(http only works with target Orchid Core VMS servers running rtsp)

Enabling Google Authentication

Beginning with version 2.0.0, Orchid Fusion VMS offers multiple ways to sign in. By performing some configuration work on the front end, your Orchid Fusion VMS users will be able to sign in with their existing Google credentials.



Google Authentication is currently not supported in Microsoft Edge.

Creating the Google Credentials

The first step in enabling Google authentication is to create an *OAuth client ID* that Orchid Fusion VMS will use to identify itself with Google OAuth servers.

1. Navigate and sign in to <https://console.developers.google.com>.
2. Click **Credentials**.
3. Click **Create Credentials** and select **OAuth Client ID**.
4. Select **Web application**.
5. Set the name to *Fusion*.
6. Enter the URL for your instance of Fusion under Authorized Javascript origins.
7. Click **Create**. When the ID is created, copy the client ID.

Creating Users in Orchid Fusion VMS

Orchid Fusion VMS users now need to be associated with Google accounts. For each user that would like to sign in using a Google account, create or modify their Orchid Fusion VMS account and specify their Google account in the email address field. For more information, please refer to the *Creating and Managing Users* section in the [Orchid Fusion VMS Administrator Guide](#).

Modifying the Configuration File

To finish up, you will need to modify the Orchid Fusion VMS configuration file and then restart Orchid Fusion VMS. For help with the steps below, please refer back to the *Installation* section that corresponds to the operating system in which you are working.

1. Add/modify the following line in your Orchid Fusion VMS configuration file:
google.auth.clientid=<your client ID>
 - a. Replace **<your client ID>** with the client ID that you copied from Google.
2. Restart the Orchid Fusion VMS service.

* If you're using Chrome, it may be necessary to restart Chrome if the user is currently signed into the browser and having trouble with the Google credentials.

Enabling Active Directory

Beginning with version 2.0.0, Orchid Fusion VMS offers multiple ways to sign in. By performing some configuration work on the front end, your Orchid Fusion VMS users will be able to sign in with their existing Active Directory credentials.

Prerequisites

To configure Orchid Fusion VMS to work with Active Directory, you will need to have an Active Directory server that:

- Is reachable from your Orchid Fusion VMS server.
- Contains at least one Active Directory user who is a member of at least one Active Directory group.

Modifying the Configuration File

There are several properties in the Orchid Fusion VMS configuration file that will need to be modified in order for Active Directory authentication to work.

✿ For extra help with the steps below, please refer back to the *Installation* section that corresponds to the operating system in which you are working.

1. Set the following properties in the Orchid Fusion VMS configuration file:

- **authentication.active.directory.servers=**
<domain1>|ldap(s)://<domainServerAddress1>,<domain2>| ldap(s)://<domainServerAddress2>
- **authentication.active.directory.admin.groups= <domain>\\<group> (Optional)**
- **authentication.active.directory.referral.mode=follow**

Here is an example enabling the domain *malibu.beach* with server address 192.168.105.46, and an Active Directory group called *FusionAdmins* that will be given administrator access in Orchid Fusion VMS.

- **authentication.active.directory.servers=malibu.beach|ldap://192.168.105.46**
- **authentication.active.directory.admin.groups= malibu.beach\\FusionAdmins (Optional)**
- **authentication.active.directory.referral.mode=follow**

✿ The **authentication.active.directory.admin.groups** property is now optional. Instead of modifying this property in the configuration file, you may add Active Directory Admin groups using the Orchid Fusion VMS user interface. Please refer to the *Add a Permission Group for*

Active Directory section of the [Orchid Fusion VMS Administrator Guide](#) for more details.

✿ **<domainServerAddress>** may be a DNS name or IP address and may be prefixed with either `ldap://` or `ldaps://` to specify the protocol.

2. After modifications to the configuration file are complete, restart the Orchid Fusion VMS service, then sign in to Orchid Fusion VMS.

Refer to the *Add a Permission Group for Active Directory* section of the [Orchid Fusion VMS Administrator Guide](#) for instructions on setting Active Directory groups.

Troubleshooting

If your administrator Active Directory user is unable to sign in, but you believe the mappings have been configured correctly, check the *fusion.log* file on the Orchid Fusion VMS server found in the following locations:

- C:\Program Files\IPConfigure\Orchid Fusion VMS\logs\fusion.log (Windows)
- /var/logs/fusion/fusion.log (Linux)

During server startup, the list of the configured Orchid Fusion VMS administrator Active Directory mappings are logged. So using the previous example, you would see a line in the file that looks like this:

14:33:46.804 [main] INFO c.i.f.i.Init03ActiveDirectoryAdminGroupsInitializer – Administrator active directory groups: malibu.beach | FusionAdmins

Also, a failed sign in attempt will show the list of Active Directory groups of which the user is a member. So using the previous example, you would see a line in the file that looks like this:

14:32:48.888 [XNIO-1 task-21] INFO c.i.f.u.a.ActiveDirectoryAuthenticator – Active directory user: nofusionaccess@malibu.beach successfully authenticated with domain: malibu.beach server address: 192.168.105.46 but failed to authenticate with Fusion because the user is not a member of any active directory groups authorized by Fusion.

nofusionaccess@malibu.beach is a member of active directory domain:

malibu.beach groups:

malibu.beach\\Developers

malibu.beach\\Domain Users

Fusion has authorized domain: malibu.beach groups:

Enabling Azure Active Directory

Beginning with version 2.10, Orchid Fusion VMS allows Azure Active Directory authentication. By performing some configuration work on the front end, your Orchid Fusion VMS users will be able to sign in with their existing Azure Active Directory credentials.

Prerequisites

To configure Orchid Fusion VMS to work with Azure Active Directory, you will need to have an Azure Active Directory server that:

- Is reachable from your Orchid Fusion VMS server.
- Contains at least one Azure Active Directory user who is a member of at least one Azure Active Directory group.

Create an Azure Active Directory Application

Follow the steps below to create an Azure Active Directory App. For a more detailed look at this process, please refer to the next [topic](#). (Please refer to Microsoft documentation for the most up-to-date instructions.)

- Log into the Azure Active Directory portal
 - https://portal.azure.com/#blade/Microsoft_AAD_IAM/ActiveDirectoryMenuBlade/Overview
- Register an Azure Active Directory “App”
 - Manage – “App registrations” – click “New registration”
 - Enter name
 - Select “Single tenant”
 - Select “Client Application (Web, iOS, Android, Desktop+Devices)”
 - App registrations – – click “Authentication”
 - “Add a platform” – select “Web”
 - Enter the Fusion redirect URI: /redirect.html
 - App registrations – – “API permissions”
 - Add Microsoft Graph Directory.Read.All (Delegated)
 - Admin consent – Microsoft Graph Directory.Read.All
 - App registrations – – “Certificates & secrets”
 - Click “New client secret” – copy and save secret value

Modifying the Configuration File

There are several properties in the Orchid Fusion VMS configuration file that will need to be modified in order for Azure Active Directory authentication to work.

✿ For extra help with the steps below, please refer back to the *Installation* section that corresponds to the operating system in which you are working.

1. Set the following properties in the Orchid Fusion VMS configuration file:
 - **authentication.azure.active.directory.clientid=<applicationid>**
 - Replace **<applicationid>** with the Application ID assigned to your App when you registered it with Azure Active Directory.
 - **authentication.azure.active.directory.clientsecret=<secretvalue>**
 - Replace **<secretvalue>** with the secret value you saved after creating it in the Azure portal.
 - **authentication.azure.active.directory.endpoint=https://login.microsoftonline.com/tenant/oauth2/authorize**
 - Replace **tenant** with the OAuth 2.0 Authorization Endpoint assigned to your App when you registered it with Azure Active Directory.
 - **authentication.azure.active.directory.domain=</domain>**
 - Typically, you will replace **</domain>** with the domain into which users are signing in.
2. After modifications to the configuration file are complete, restart the Orchid Fusion VMS service, then sign in to Orchid Fusion VMS.

Refer to the *Add a Permission Group for Azure Active Directory* section of the [Orchid Fusion VMS Administrator Guide](#) for instructions on setting Permission Groups for Azure Active Directory groups.

Detailed Steps for Configuring Azure Active Directory

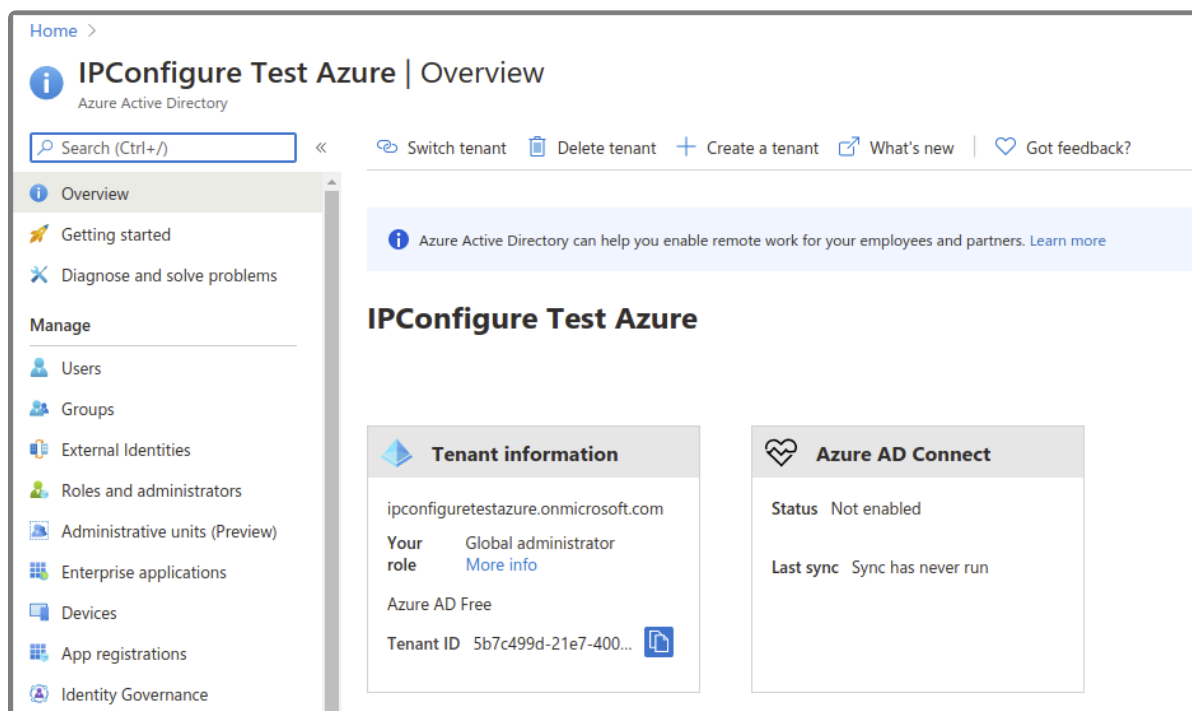
This section provides a quick walk-through of configuring Azure Active Directory (free tier) (for enabling Azure Active Directory-based authentication in Orchid Fusion VMS). Specifically this section will guide you through the following:

- Creating a free Microsoft Account (if needed)
- Creating an Azure Active Directory user
- Creating an Azure Active Directory group
- Registering an Azure Active Directory app

✿ Please be aware that screenshots and descriptions of the Microsoft Azure AD web interface are current as of June, 2020, but may be changed by Microsoft at any time.

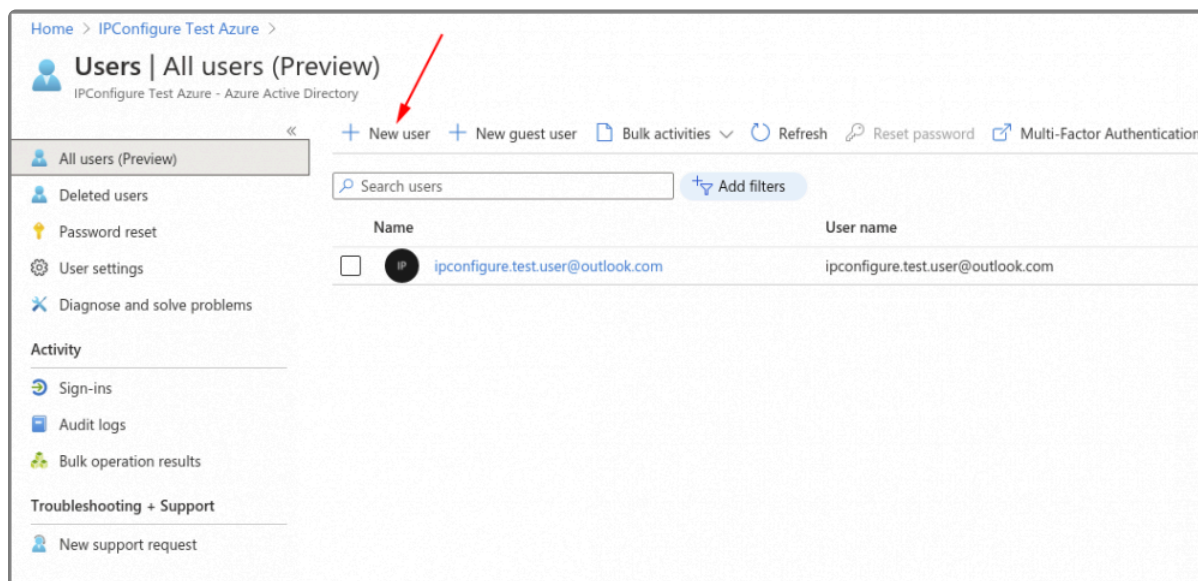
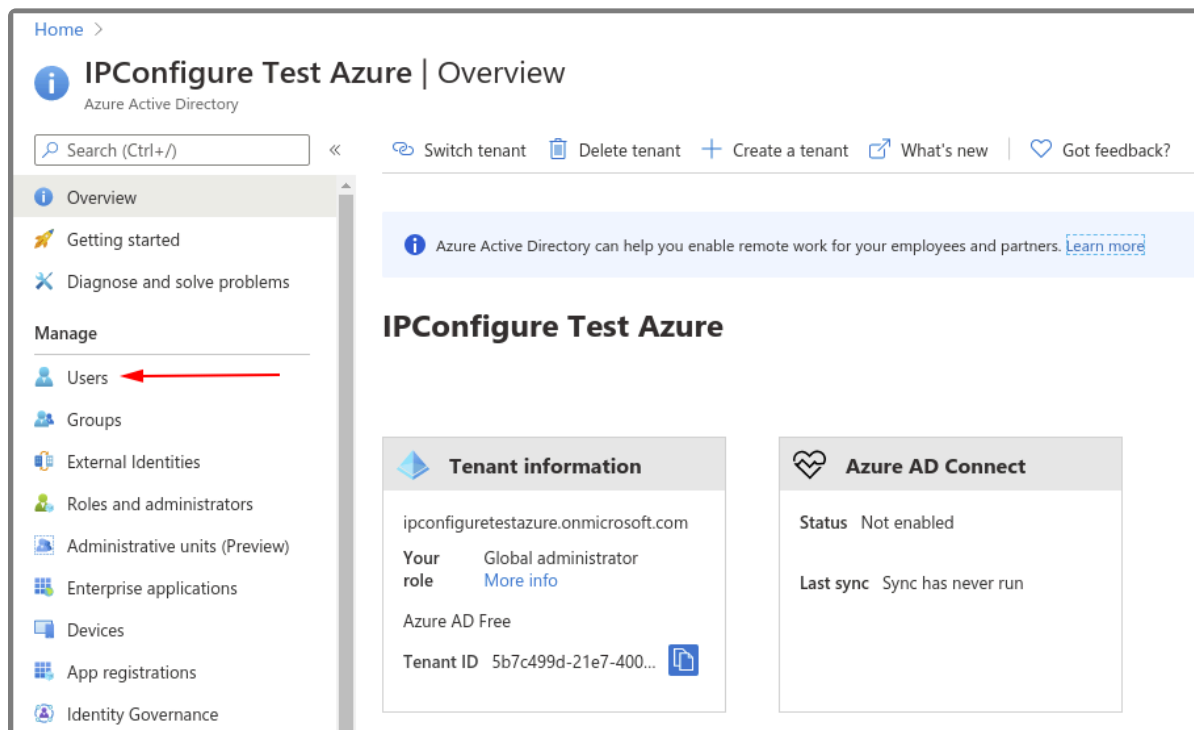
Microsoft Azure Active Directory Account Setup and Portal Login

1. If you do not have a Microsoft account, create a free account here: <https://account.microsoft.com/account>
2. Log into the Azure Active Directory (free tier) portal using your Microsoft account: https://portal.azure.com/#blade/Microsoft_AAD_IAM/ActiveDirectoryMenuBlade/Overview



Create an Azure Active Directory User

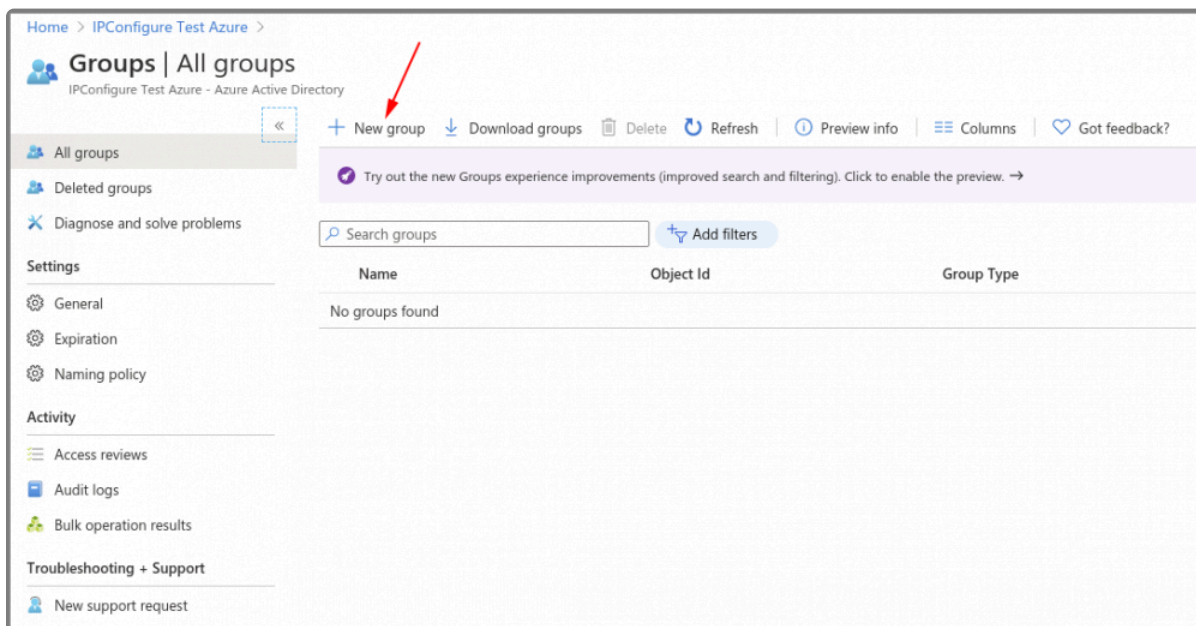
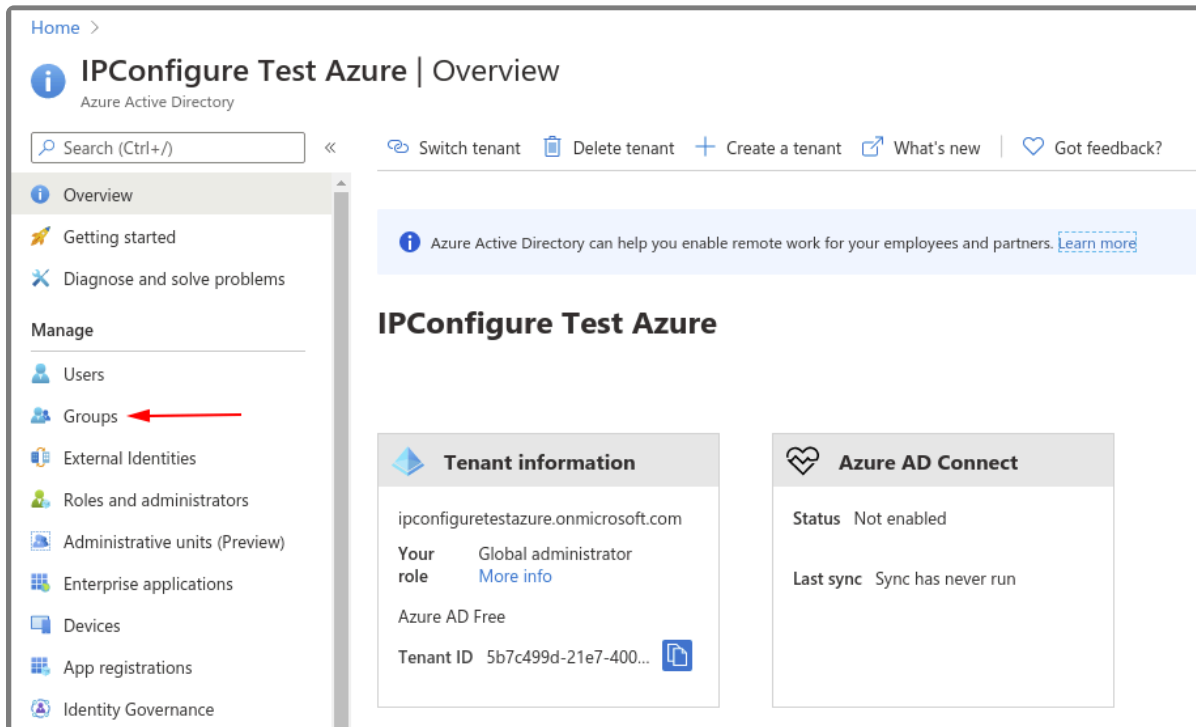
1. Enter a name for the user in the *User name* field. (This is a short name that you use to sign in, like *TJones @ ipconfigure.com*.)
2. Enter the formal (long) name for the user in the *Name* field (like *Tom Jones*).



Create an Azure Active Directory Group

1. You will need to create at least one Azure Active Directory Group with at least one member.

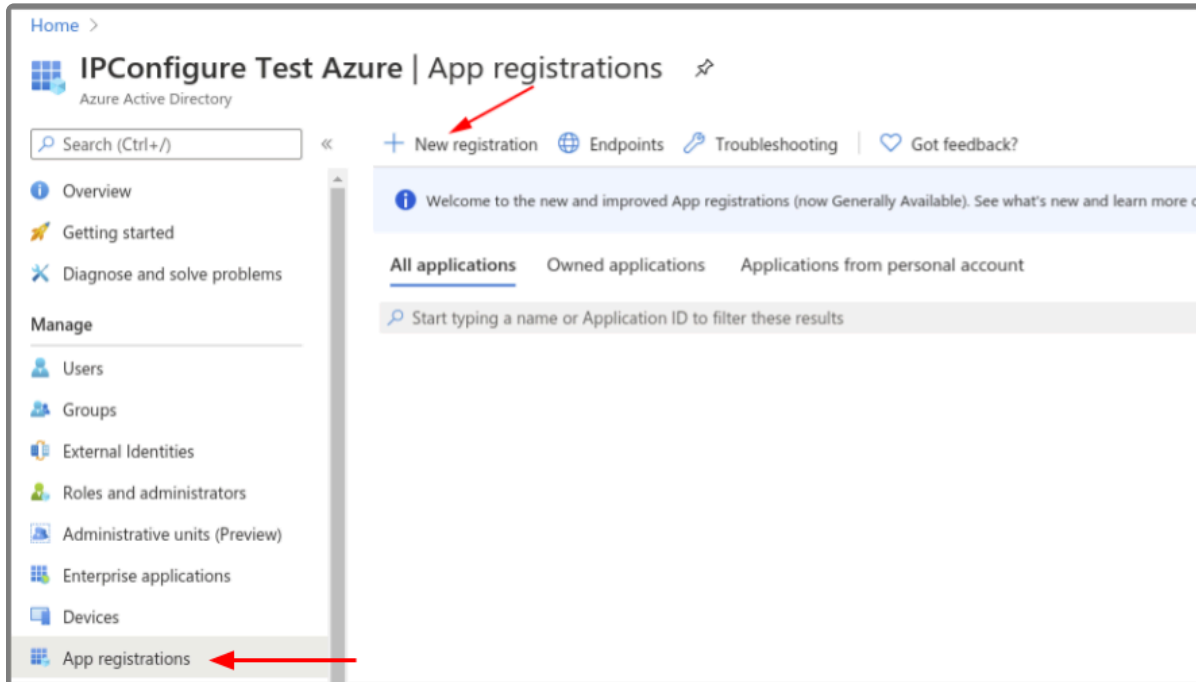
- a. Select a type from the *Group type* drop-down.
- b. Enter a name for the group in the *Group name* field.
- c. Select group members by clicking on the *Members* link.



Register an Azure Active Directory App

1. To register a New app, be sure to set the following:
 - a. Enter the user-facing display name for this application in the *Name* field.
 - b. Select the *Single Tenant* option under *Supported Account Types*.

- c. Select the *Client Application* option under *Platform Configuration*.



Azure AD App – Authentication – Add a Web Platform

1. Go to *Authentication*, then select *Add a platform*.
 - a. Select the *Web* type application.
 - b. Enter the Fusion redirect URL: `http(s)://<fusion-url>/redirect.html` in the *Redirect URIs* field (where `<fusion-url>` is the URL for your Fusion server).

Home >

Fusion Azure AD Test App | Authentication

Search (Ctrl+/) Save Discard Got feedback?

Manage

- Overview
- Quickstart
- Integration assistant (preview)
- Authentication**
- Certificates & secrets
- Token configuration
- API permissions
- Expose an API
- Owners
- Roles and administrators (Preview)
- Manifest

Support + Troubleshooting

- Troubleshooting
- New support request

Platform configurations

Depending on the platform or device this application is targeting, additional configuration may be required such as redirect URIs, specific authentication settings, or fields specific to the platform.

[+ Add a platform](#)

Supported account types

Who can use this application or access this API?

☒ Accounts in this organizational directory only (IPConfigure Test Azure only - Single tenant)

☐ Accounts in any organizational directory (Any Azure AD directory - Multitenant)

[Help me decide...](#)

Warning: Due to temporary differences in supported functionality, we don't recommend enabling personal Microsoft accounts for an existing registration. If you need to enable personal accounts, you can do so using the manifest editor. [Learn more about these restrictions.](#)

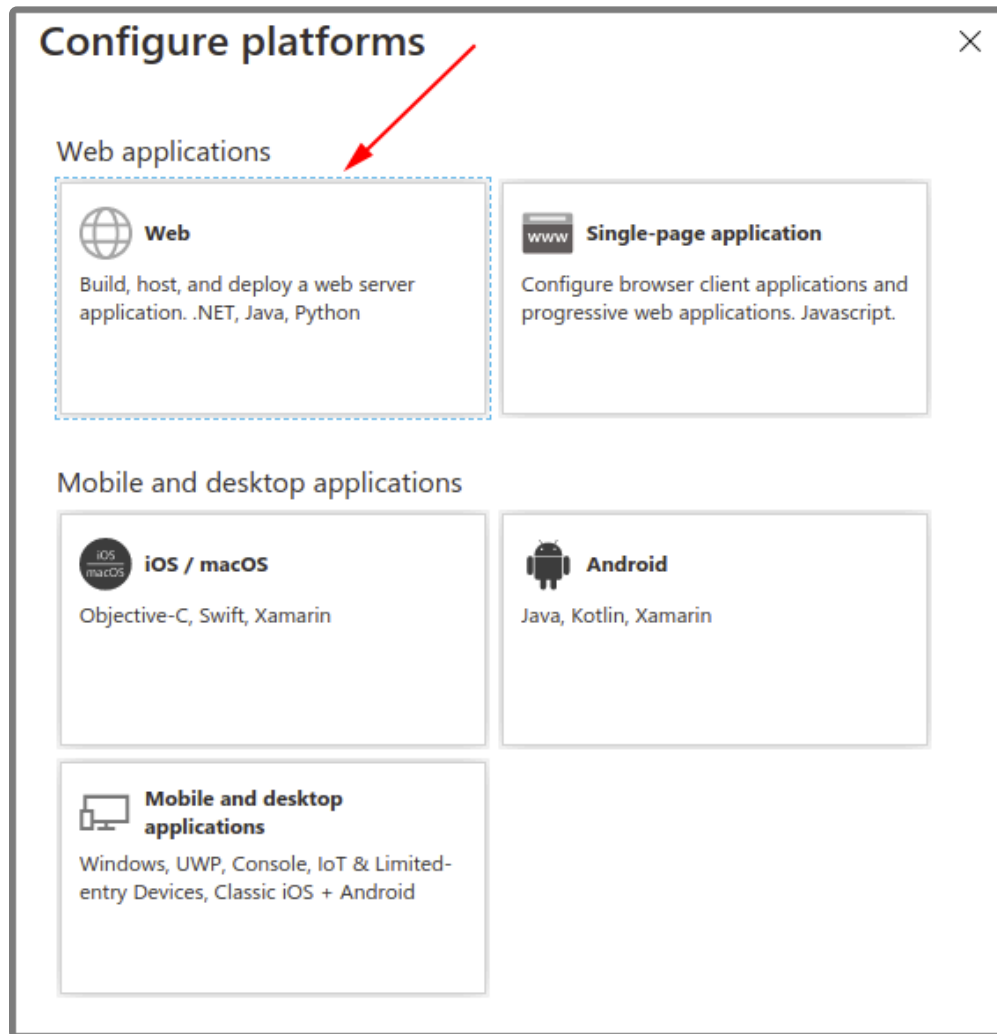
Advanced settings

Default client type

Treat application as a public client.

Required for the use of the following flows where a redirect URI is not used:

- Resource owner password credential (ROPC) [Learn more](#)



Configure Web

[All platforms](#)[Quickstart](#)[Docs](#)

Redirect URIs

The URIs that we will accept as destinations when returning authentication responses (tokens) after successfully authenticating users. Also referred to as reply URLs. [Learn more about Redirect URIs and their restrictions](#)

✓

Logout URL

This is where we send a request to have the application clear the user's session data. This is required for single sign-out to work correctly.

Implicit grant

Allows an application to request a token directly from the authorization endpoint. Checking Access tokens and ID tokens is recommended only if the application has a single-page architecture (SPA), has no back-end components, does not use the latest version of MSAL.js with auth code flow, or it invokes a web API via JavaScript. ID Token is needed for ASP.NET Core Web Apps. [Learn more about the implicit grant flow](#)

To enable the implicit grant flow, select the tokens you would like to be issued by the authorization endpoint:

☐ Access tokens☐ ID tokens

Azure AD App – API Permissions

1. Go to *API permissions*, then select *Add a permission*.
 - a. Select the *Microsoft Graph*.
 - b. Select the *Directory.Read.All* delegated permission.

Home > Fusion Azure AD Test App | API permissions

Search (Ctrl+/) << Refresh

Overview
Quickstart
Integration assistant (preview)

Manage

- Branding
- Authentication
- Certificates & secrets
- Token configuration
- API permissions**
- Expose an API
- Owners
- Roles and administrators (Preview)
- Manifest

Support + Troubleshooting

- Troubleshooting
- New support request

Configured permissions

Applications are authorized to call APIs when they are granted permissions by users/admins as part of the all the permissions the application needs. [Learn more about permissions and consent](#)

+ Add a permission Grant admin consent for IPConfigure Test Azure

API / Permissions name	Type	Description
Microsoft Graph (1)		
User.Read	Delegated	Sign in and read user profile

Request API permissions

Select an API

Microsoft APIs

APIs my organization uses

My APIs

Commonly used Microsoft APIs



Microsoft Graph

Take advantage of the tremendous amount of data in Office 365, Enterprise Mobility + Security, and Windows 10. Access Azure AD, Excel, Intune, Outlook/Exchange, OneDrive, OneNote, SharePoint, Planner, and more through a single endpoint.



Azure Service Management

Programmatic access to much of the functionality available through the Azure portal



Office 365 Management APIs

Retrieve information about user, admin, system, and policy actions and events from Office 365 and Azure AD activity logs

Request API permissions

< All APIs

Microsoft Graph
<https://graph.microsoft.com/> Docs

What type of permissions does your application require?

Delegated permissions

Your application needs to access the API as the signed-in user.

Application permissions

Your application runs as a background service or daemon without a signed-in user.

Select permissions expand all

Directory.Read.All

Permission Admin consent required

▼ Directory (1)

<input checked="" type="checkbox"/>	Directory.Read.All Read directory data	Yes
-------------------------------------	---	-----

2. Select *Grant admin consent* for your application.

Home >

Fusion Azure AD Test App | API permissions

Search (Ctrl+/) << Refresh

Overview
 Quickstart
 Integration assistant (preview)

Manage

Branding
 Authentication
 Certificates & secrets
 Token configuration
API permissions
 Expose an API
 Owners
 Roles and administrators (Preview)
 Manifest

Support + Troubleshooting

Troubleshooting
 New support request

Configured permissions

Applications are authorized to call APIs when they are granted permissions by users/admins as part of the all the permissions the application needs. [Learn more about permissions and consent](#)

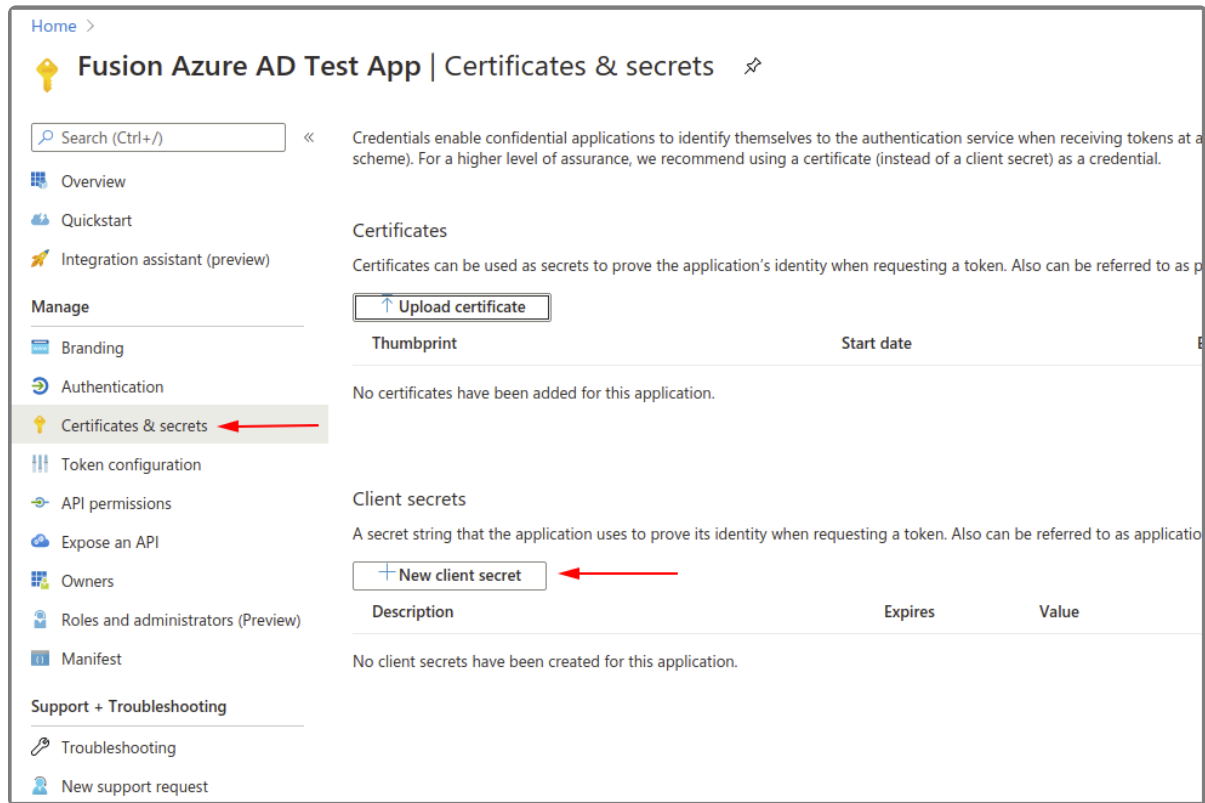
+ Add a permission
 Grant admin consent for IPConfigure Test Azure

API / Permissions name	Type	Description
▼ Microsoft Graph (2)		
Directory.Read.All	Delegated	Read directory data
User.Read	Delegated	Sign in and read user profile

Azure AD App – Certificates & Secrets – Create a New Client Secret

1. Select *New client secret* to create a new secret value.
2. **Save** the secret value because it will not be available later. (Copy the secret value to a secure

location.)



Azure AD App – Save the Client ID and OAuth 2.0 Authorization Endpoint (v1)

1. Go to the *Overview*.
 - a. Make note of the *Azure Application (client) ID* value for later use.
2. Select *Endpoints*.
 - a. Make note of the *OAuth 2.0 authorization endpoint (v1)* value for later use.

Home > IPConfigure Test Azure | App registrations >

Fusion Azure AD Test App

Search (Ctrl+/) << Delete Endpoints

Overview Quickstart Integration assistant (preview)

Manage

- Branding
- Authentication
- Certificates & secrets
- Token configuration
- API permissions
- Expose an API
- Owners
- Roles and administrators (Preview)
- Manifest

Support + Troubleshooting

- Troubleshooting
- New support request

Display name : Fusion Azure AD Test App

Application (client) ID : 81efca5b-d0ac-426e-9b7f-f02fd862cfe0

Directory (tenant) ID : 5b7c499d-21e7-4004-987c-71131d12bd60

Object ID : fef86a6c-701e-44e4-8d97-03e70cb0e61e

Welcome to the new and improved App registrations. Looking to learn how it's changed from App registrations (Legacy)?

Call APIs

Build more powerful apps with rich user and business data from Microsoft services and your own company's data sources.

[View API permissions](#)

Endpoints

OAuth 2.0 authorization endpoint (v2)
<https://login.microsoftonline.com/5b7c499d-21e7-4004-987c-71131d12bd60/oauth2/v2.0/authorize>

OAuth 2.0 token endpoint (v2)
<https://login.microsoftonline.com/5b7c499d-21e7-4004-987c-71131d12bd60/oauth2/v2.0/token>

OAuth 2.0 authorization endpoint (v1)
<https://login.microsoftonline.com/5b7c499d-21e7-4004-987c-71131d12bd60/oauth2/authorize>

OAuth 2.0 token endpoint (v1)
<https://login.microsoftonline.com/5b7c499d-21e7-4004-987c-71131d12bd60/oauth2/token>

At this point, you should have all of the required values to enable Azure Active Directory-based authentication in Orchid Fusion VMS. Return to the previous section ([Enabling Azure Active Directory](#)) for instructions on modifying the Orchid Fusion VMS configuration file to enable Azure Active Directory authentication. Once enabled, you may add one or more Orchid Fusion VMS *Permission Groups* that pull users from your Azure Active Directory. (For details on adding *Permission Groups*, please refer to the *Add a Permission Group for Azure Active Directory* section in the [Orchid Fusion VMS Administrator Guide](#).)

Enabling FreeIPA Authentication

Beginning with version 2.10, Orchid Fusion VMS allows FreeIPA authentication. By performing some configuration work on the front end, your Orchid Fusion VMS users will be able to sign in with their existing FreeIPA credentials.

Prerequisites

To configure Orchid Fusion VMS to work with FreeIPA, you will need to have an FreeIPA server that:

- Is reachable from your Orchid Fusion VMS server.
- Contains at least one FreeIPA user who is a member of at least one FreeIPA group.

Modifying the Configuration File

There are a couple of properties in the Orchid Fusion VMS configuration file that will need to be modified in order for FreeIPA authentication to work.

✿ For extra help with the steps below, please refer back to the *Installation* section that corresponds to the operating system in which you are working.

1. Set the following properties in the Orchid Fusion VMS configuration file:

- **authentication.freeipa.servers=**
<domain1>|<domainServerAddress1>,<domain2>|<domainServerAddress2>
 - Replace **<domain1>** with the domain on which your first FreeIPA server exists. Replace **<domainServerAddress1>** with the address of your first FreeIPA server.
- **authentication.freeipa.domain.userdn= cn=<domain>-users,cn=<domain>-accounts**
 - Replace **domain** with one of the configured FreeIPA servers. Replace **<domain>** with the name of the alternate user container.

✿ **<domainServerAddress>** may be a DNS name or IP address and may be prefixed with either **ldap://** or **ldaps://** to specify the protocol.

2. After modifications to the configuration file are complete, restart the Orchid Fusion VMS service, then sign in to Orchid Fusion VMS.

Refer to the *Add a Permission Group for FreeIPA* section of the [Orchid Fusion VMS Administrator Guide](#) for instructions on setting FreeIPA *Permission Groups*.

Orchid Fusion VMS APPs

Beginning with version 2.4.0, Orchid Fusion VMS supports the Application Partner Platform (APP) feature. The *APPs* component allows third-party vendors to customize Orchid Fusion VMS by creating features that live within the Orchid Fusion VMS user interface.


To Activate the APPs Feature in Orchid Fusion VMS

Follow these steps to setup the *APPs* feature:

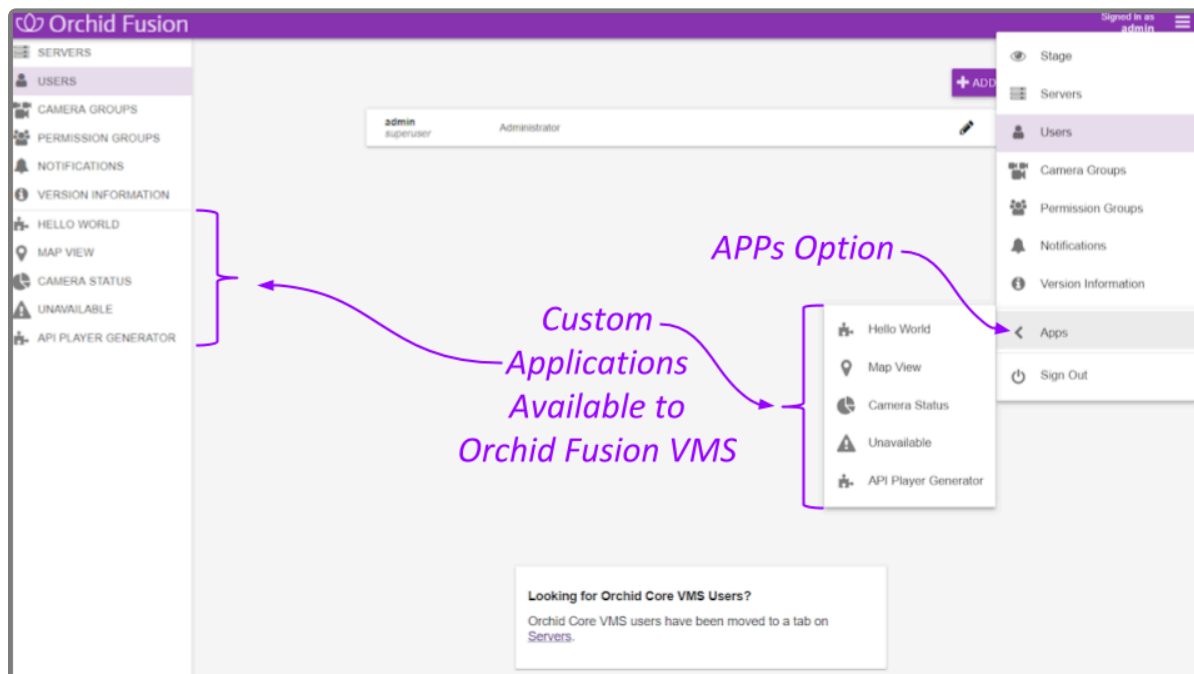
1. Obtain the custom application from your developer.
2. Install the application according to the developer's instructions.
3. Modify the Orchid Fusion VMS configuration file. This modification identifies the Orchid Fusion VMS server location at which your custom application is stored.
 - a. Open the Orchid Fusion VMS properties file. (If you need extra help, refer back to the *How to Edit a Configuration File* section that corresponds to the operating system you are using.)
 - b. Modify the **fusion.apps.path** setting to specify where on the server the custom application is being stored. For example: **fusion.apps.path=c:\\apps**
(Don't forget to remove the # at the beginning of the line.)
 - c. Save your changes and close the configuration file.
4. Restart the Orchid Fusion VMS service. (If you need extra help, refer back to the *How to Manage the Orchid Fusion VMS Service* section that corresponds to the operating system you are using.)
5. Once Orchid Fusion VMS knows where to find the *APPs*, the program will respond by providing the *APPs* option on the *System Menu*.

Access the Orchid Fusion VMS APPs Feature

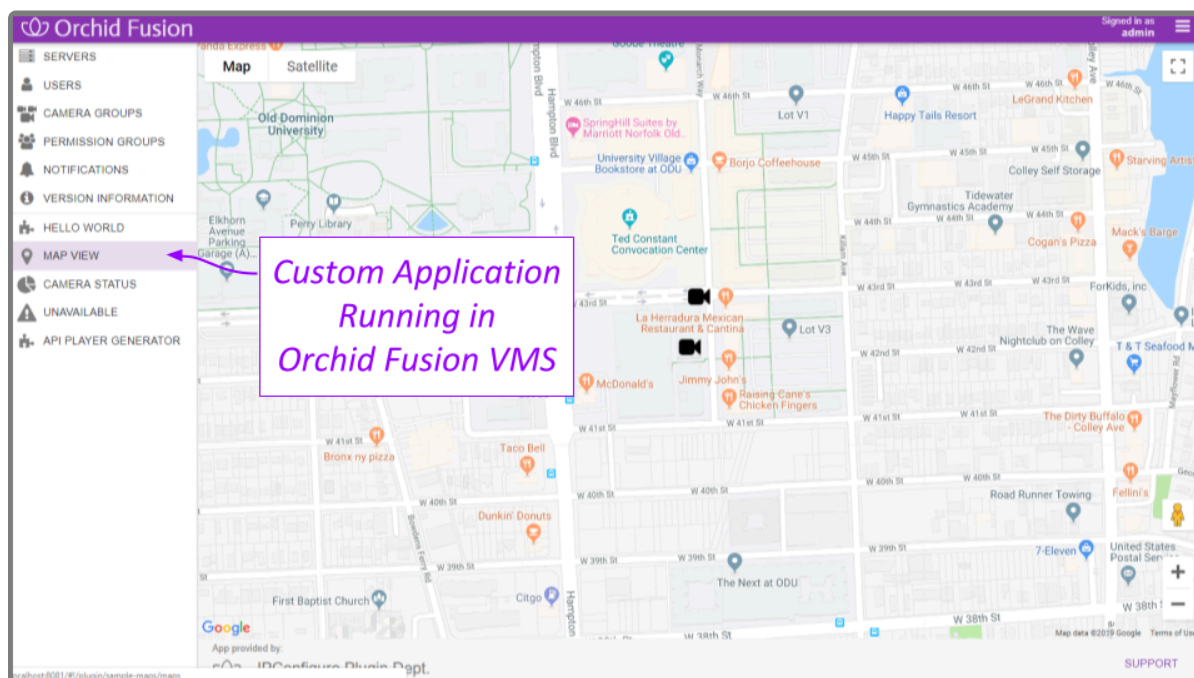
Once the *APPs* feature is activated, you can access your custom applications within Orchid Fusion VMS.

 To access to the *APPs* feature, you must be a member of a *Permission Group* that has access (such as an *Administrator* group, the *All APPs* group, or an APP-specific group).

1. Open the *System Menu* in the top-right corner of the screen and select *APPs*.
2. The *APPs* sub-menu will appear. This sub-menu will list all of the custom applications that Orchid Fusion VMS finds in the location noted in the Fusion properties file, and that you have access to. (Notice that all of your custom applications are now also listed on the *Configuration Menu*, when visible, on the left side of the screen.)



3. Click on one of the custom applications to open it within Orchid Fusion VMS.

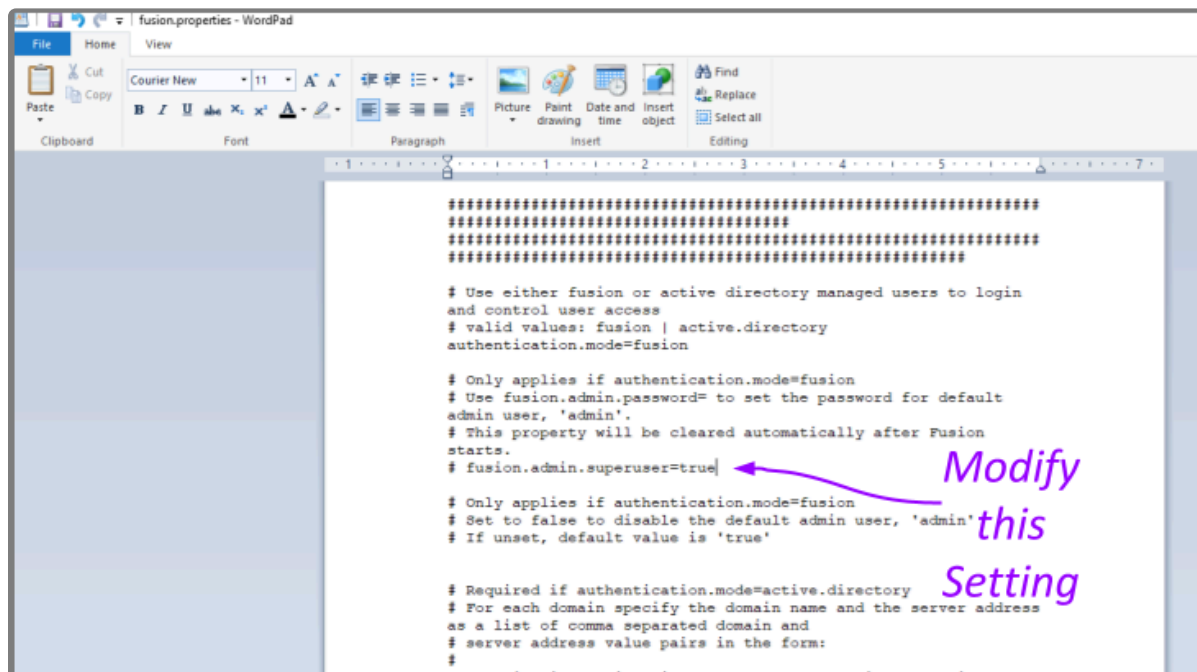


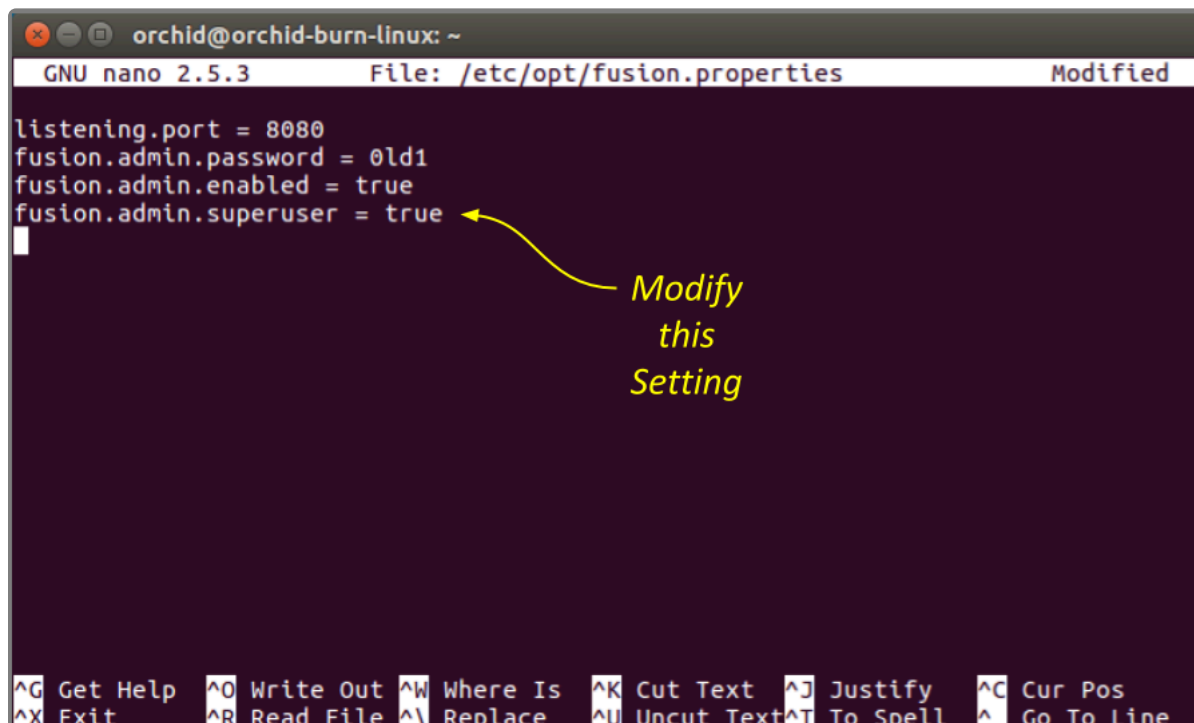
Creating a Superuser

Beginning with version 2.4.0, Orchid Fusion VMS allows you to create a *Superuser*. This special administrator account has all of the abilities and access of an administrator, and is protected from edits by any other user. You may create this account by modifying the Orchid Fusion VMS properties file.

✿ In order to perform this change, you must be signed in as an Administrator, and you must be using standard or Google authentication.

1. Open the Orchid Fusion VMS properties file. (If you need extra help, refer back to the *How to Edit a Configuration File* section that corresponds to the operating system you are using.)





```
orchid@orchid-burn-linux: ~  
GNU nano 2.5.3 File: /etc/opt/fusion.properties Modified  
listening.port = 8080  
fusion.admin.password = 0ld1  
fusion.admin.enabled = true  
fusion.admin.superuser = true  
  
^G Get Help ^O Write Out ^W Where Is ^K Cut Text ^J Justify ^C Cur Pos  
^X Exit ^R Read File ^\ Replace ^U Uncut Text ^T To Spell ^_ Go To Line
```

2. Modify the **fusion.username.superuser** property to establish or revoke superuser status.
 - a. The username may be **admin** (for the default admin user) or any other Fusion username.
 - b. Set this property to **True** to elevate the user to superuser status.
 - c. Set this property to **False** to revoke the user's superuser status.
 - d. Don't forget to remove the # at the beginning of the line.
3. Save and close the configuration file.
4. After you update the Orchid Fusion VMS properties file, you must restart the Orchid Fusion VMS service. (If you need extra help, refer back to the *How to Manage the Orchid Fusion VMS Service* section that corresponds to the operating system you are using.)
5. Once the restart is complete, you can sign into Orchid Fusion VMS.

Linux Tips & Tricks

If you are using Orchid Fusion VMS with Linux, these tips will help you navigate the system so that you can perform tasks and find files faster.

Opening and Navigating a Terminal

Access a Linux command line terminal to perform system administration tasks by pressing **Ctrl-Alt-T**. Navigate the filesystem using a few simple commands:

pwd

show the working (current) directory

ls

list the contents of the working directory

ls -lh —color

list detailed contents of the working directory

cd directory

change to a new working directory

cd ..

go up one directory

mv src dst

move a file or directory

cp src dst

copy a file

nano file

edit a text file

sudo cmd

run any command (editing a file, for example) as the superuser (root/Administrator).

sudo gedit

open a graphical text editor with superuser permission



Commands, files, and directories can be auto-completed by tapping the **Tab** key—use it

liberally, it makes things much easier!

Important Directories and Files

Orchid Fusion VMS stores video, logs, configuration files, and a variety of other data in different directories. The default locations are as follows:

Directory/File	In Windows	In Linux
Installation directory	C:\Program Files\IPConfigure\Orchid Fusion VMS	/opt/fusion
Executable files	C:\Program Files\ IPConfigure\Orchid Fusion VMS	/opt/fusion/bin
Library files	C:\Program Files\ IPConfigure\Orchid Fusion VMS\lib	/opt/fusion/lib
Log file	C:\Program Files\ IPConfigure\Orchid Fusion VMS\logs	/var/log/fusion
Database file	C:\Program Files\ IPConfigure\Orchid Fusion VMS\fusion.sqlite	/var/lib/fusion/fusion.sqlite
Configuration file	C:\Program Files\ IPConfigure\Orchid Fusion VMS\conf\fusion.properties	/etc/opt/fusion/fusion.properties
Logback file	C:\Program Files\ IPConfigure\Orchid Fusion VMS\conf\logback.xml	/etc/opt/fusion/logback.xml
Uninstall file	C:\Program Files\ IPConfigure\Orchid Fusion VMS\uninstall.exe	N/A
Downloads (Exported video)	User's Downloads folder	~/Downloads



For additional help with Orchid Fusion VMS, please visit our training site at training.ipconfigure.com.