



Orchid Core VMS Installation Guide

2.10.0 — Last update: Jul 09, 2020

IPConfigure

Table of Contents

- About the Orchid Core VMS Installation Guide 1
- Installation 2
 - Working in Windows..... 3
 - Working in Ubuntu 14.04..... 16
 - Working in Ubuntu 16.04 to 20.04 31
 - Working in Red Hat..... 44
- Installation Support Topics 52
 - Orchid Core VMS Configuration Settings 53
 - Orchid Core VMS Firewall/Ports Configuration 61
 - Changing the Orchid Core VMS Administrator Password 62
 - Changing the Orchid Core VMS Archives Storage Location 63
 - Changing the Orchid Core VMS Archives Retention Percentage 65
 - Enabling a STUN Server for WebRTC Mode 66
 - Linux Tips & Tricks..... 68
 - Important Directories and Files 70

About the Orchid Core VMS Installation Guide

The Orchid Core VMS Installation Guide is designed for IPConfigure dealers, integrators, or system administrators who are tasked with software installation. In addition to installation instructions, this guide provides procedures for optimizing the database, editing configuration files, working with the Orchid Core VMS services, and uninstalling the Orchid Core VMS software.

This guide covers Orchid Core VMS installation on the following operating systems:

- Windows
- Ubuntu 14.04 LTS
- Ubuntu 16.04 to 20.04 (LTS versions) (Refer to Ubuntu 16.04 LTS)
- Red Hat Enterprise Linux 7 and 8 (Refer to Red Hat Enterprise Linux 7)
- CentOS 7 and 8 (Refer to Red Hat Enterprise Linux 7)
- Debian Jessie (Refer to Ubuntu 16.04 LTS)
- Raspbian Jessie (Refer to Ubuntu 16.04 LTS)

This guide provides additional information on a variety of topics listed under [Installation Support Topics](#).

Installation

Orchid Core VMS is compatible with the following operating systems: Windows, Ubuntu 14.04 LTS, Ubuntu 16.04 to 20.04 (LTS versions), Red Hat Enterprise Linux 7 and 8 (64-bit), CentOS 7 and 8, Raspbian Jessie, and Debian Jessie.

For each of these operating systems, we are providing instructions for installation, database optimization, editing configuration files, managing services, and uninstalling Orchid Core VMS. Please refer to the section that corresponds to the operating system installed on your machine.

Working in Windows

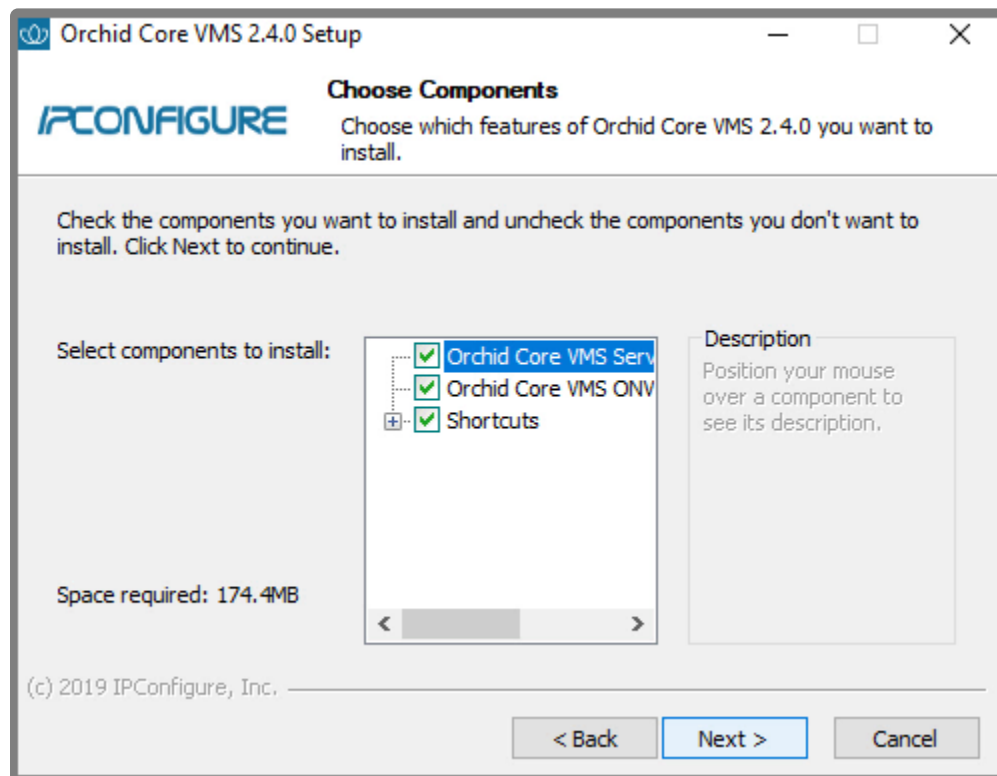
Installing Orchid Core VMS on Windows

IPConfigure distributes a single Windows installer that is valid for all 64-bit versions of Windows 7 and up, as well as 64-bit Windows Server 2008 R2 and up.

✿ Orchid Core VMS can only be installed on a 64-bit operating system; it is not compatible with 32-bit operating systems.

✿ You must sign in to the computer as a user with administrative privileges.

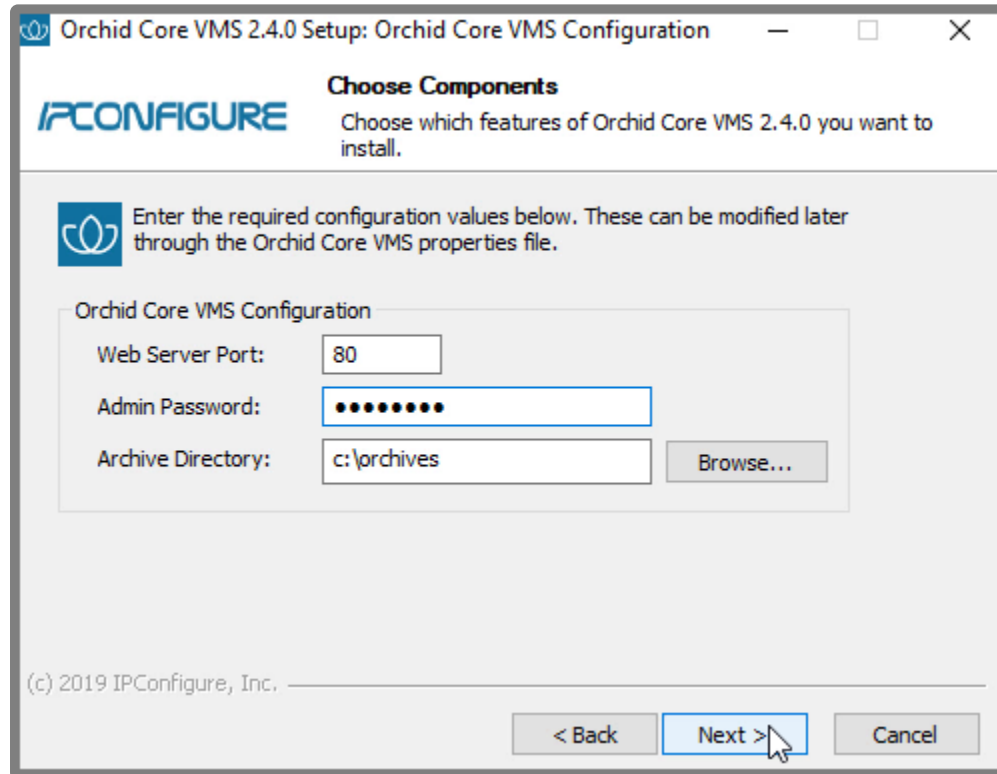
1. Download the Orchid Core VMS executable file. You can find the latest version of the Orchid Core VMS on IPConfigure's website at <https://www.ipconfigure.com/products/orchid#download>.
2. Open the Orchid Core VMS executable file (ipc-orchid_2.6.0.exe, for example). You will be asked if you want to allow the installer to make changes to your computer. Click **Yes** to allow the installer to open.
3. Before proceeding with the installation, close all other applications, then click **Next** to continue.
4. You will be asked to accept the End-User License Agreement. After reading the agreement, click the **I Agree** button to accept it.
5. You will be asked to select the components you want to install. Orchid Service, Orchid ONVIF Discovery Service, and Shortcuts will already be checked.



- **Orchid Core VMS Service:** This service is responsible for recording cameras, managing archives, and serving the web-based Orchid Core VMS user interface to your browser.
- **Orchid Core VMS ONVIF Autodiscovery:** This service is used by Orchid Core VMS to automatically discover ONVIF conformant cameras on your local network.
- **Shortcuts:** This installs a shortcut on the computer to open the Orchid Core VMS user interface in a web browser.

6. Click the **Next** button to proceed with the installation

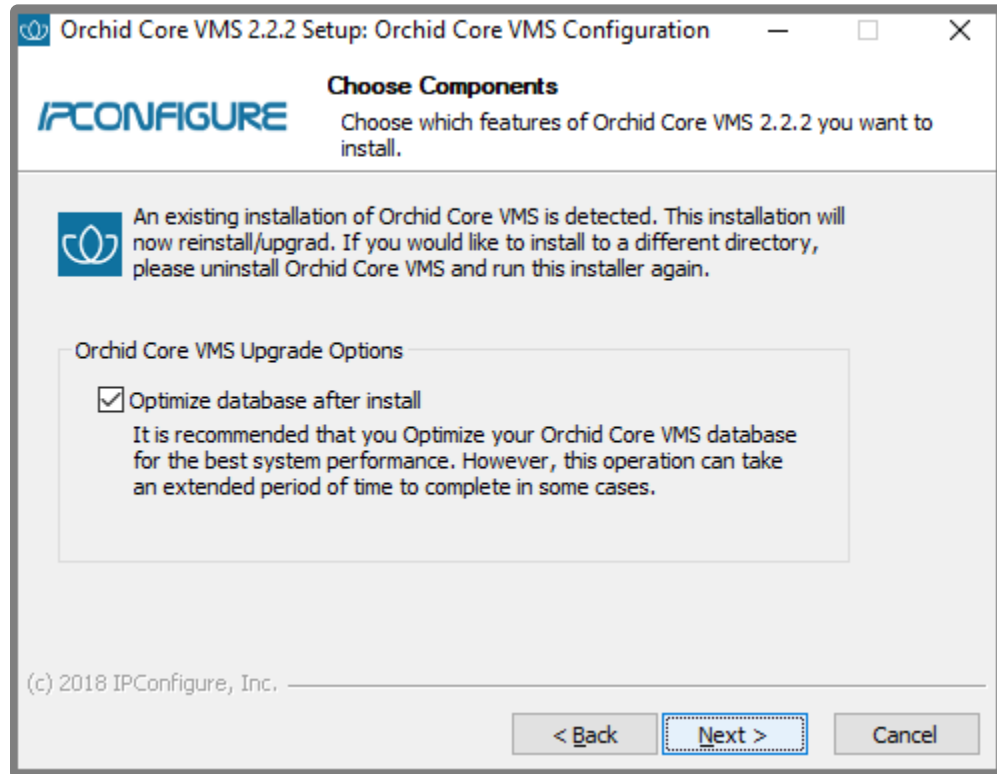
If this is a new installation, the installer will ask you to set the Web Server Port, Admin Password, and the Archive Directory for storage.



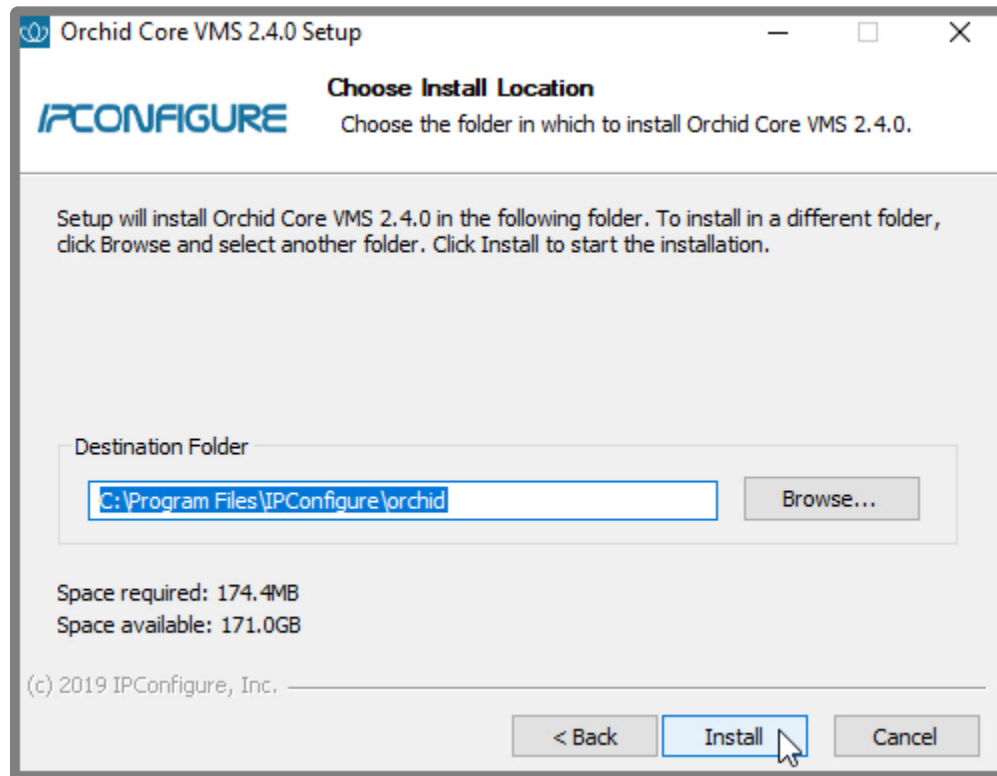
- By default, the web server port is set to port 80 (recommended for most installations). Update the port number only if Orchid Core VMS needs to use a port other than 80.
- Enter the password you would like to set for the default admin account in the *Admin Password* field.
- The default folder for video archives on Windows is *C:\archives*. This can be changed to another directory, if needed.

After configuring these properties, proceed to step 7.

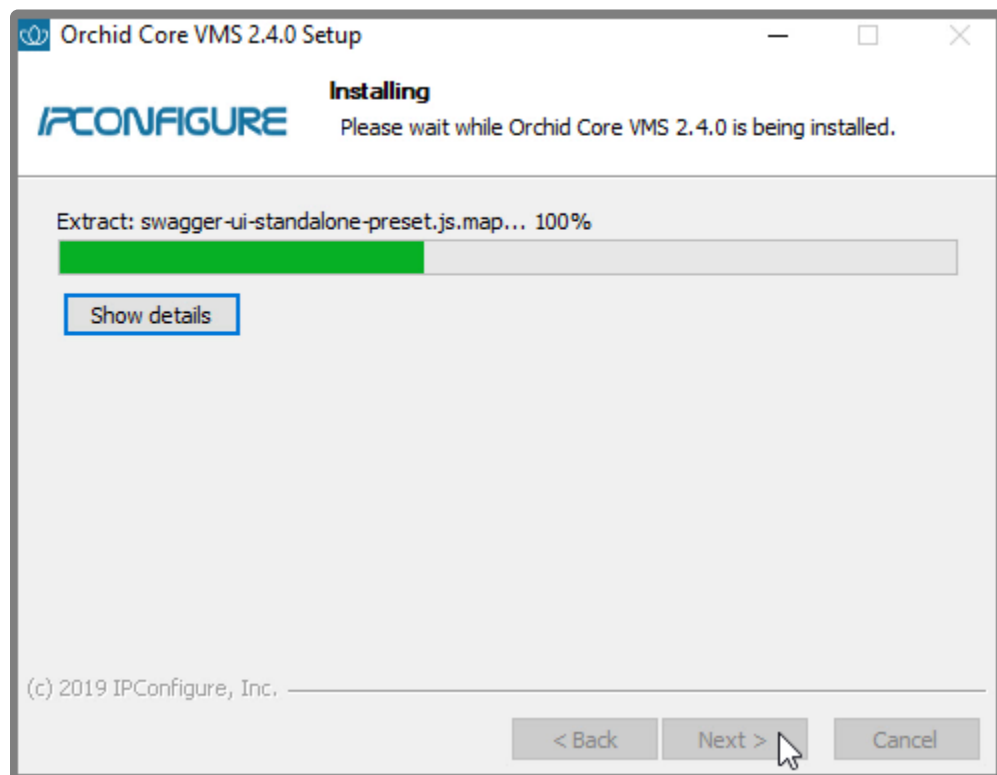
If this is a software upgrade, the next screen will give you the opportunity to optimize the database. Optimization is recommended (since it will improve the overall performance of the system, especially notable in larger systems with video retentions greater than 40 TB). Be aware, however, that the optimization process may take a while to complete (and Orchid Core VMS will be unavailable during this time).



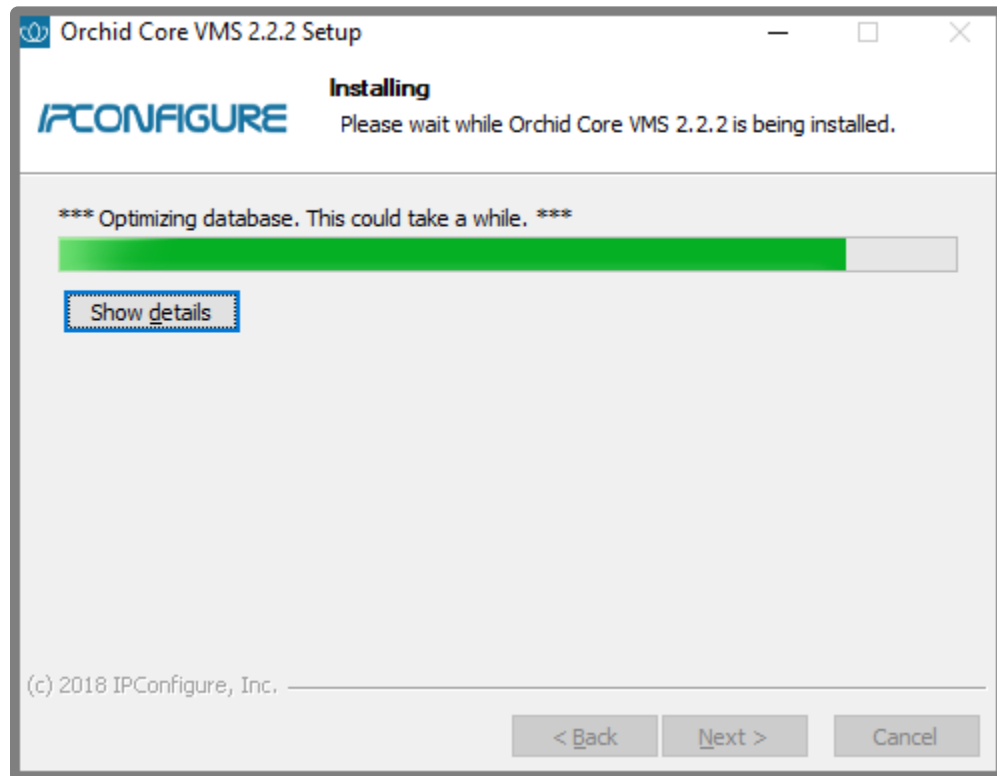
- Mark the checkbox to optimize the database.
7. Click the **Next** button to continue.
 8. The installer will ask you to confirm the installation folder. By default this is *C:\Program Files\IPConfigure\Orchid* and does not need to be changed. However, the installation directory can be updated, if needed.



9. Click the **Install** button to proceed with the installation. The installation will complete automatically without any additional prompts. This process may take a few minutes (and perhaps longer if the optimization process was selected).

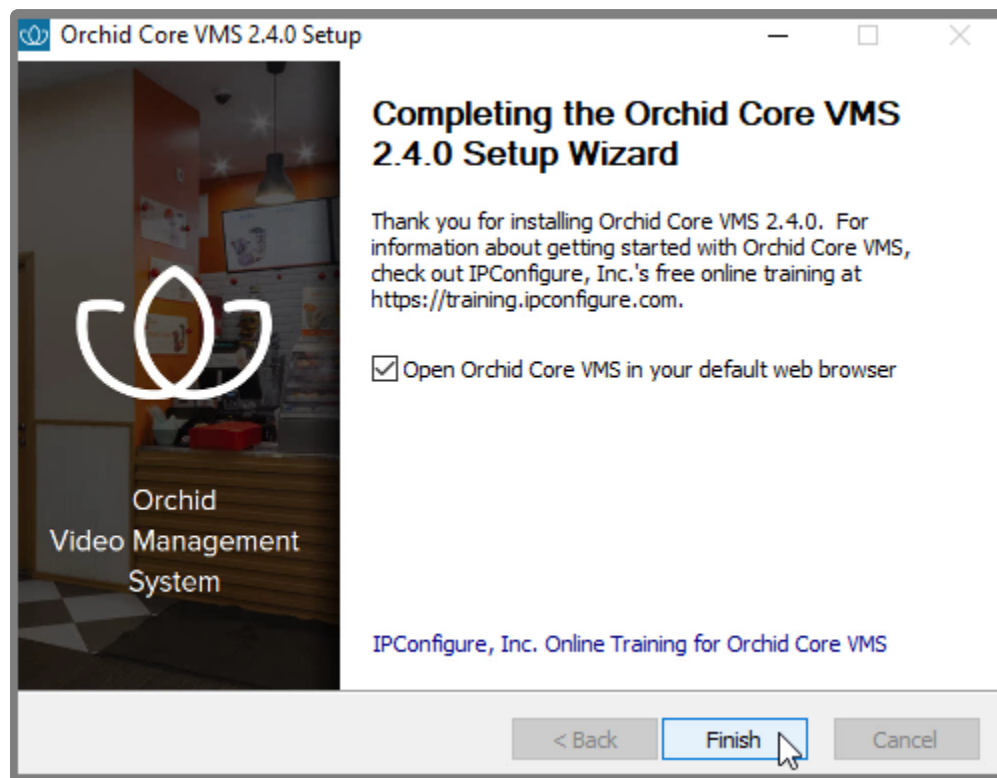


Sample Installation Screen



Sample Database Optimization Screen

10. Once the installer says “*Completing*” at the top of the window, mark the *Open Orchid VMS...* checkbox if you want to open Orchid Core VMS in your default web browser upon exit.



11. Click the **Finish** button to close the installer. Orchid Core VMS will automatically open in the

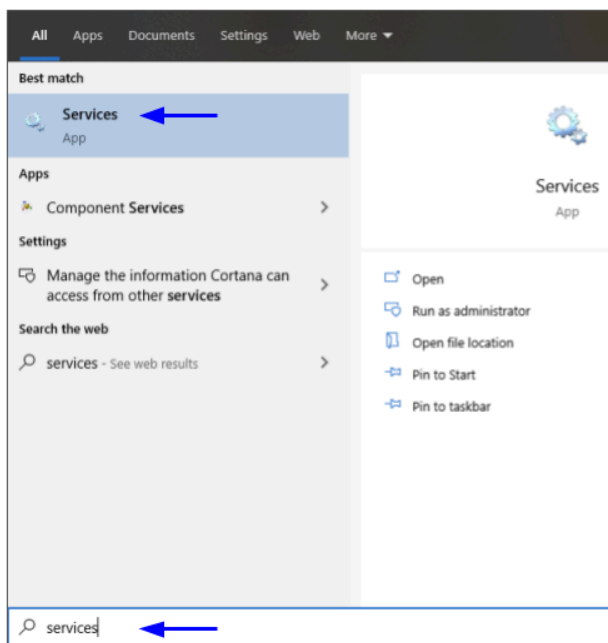
computer's default web browser (if so marked).

If **Orchid Core VMS** is being installed on **Windows Server**, there may be some complications that prevent Orchid Core VMS from starting. If this is the case, please review the following topic.

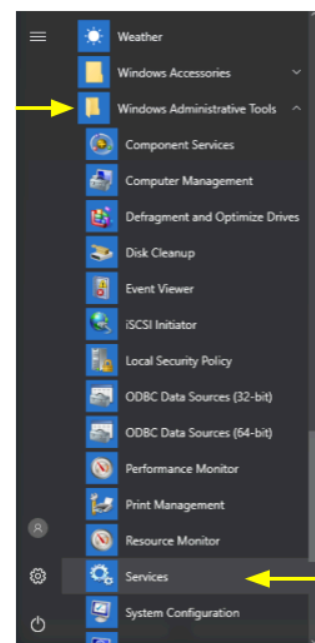
Orchid Core VMS Not Starting In Windows Server

Unless changed during installation, Orchid Core VMS uses port 80 by default for its internal web server. This can cause problems in Windows Server and prevent Orchid Core VMS from starting. To remedy this, please follow the procedure below.

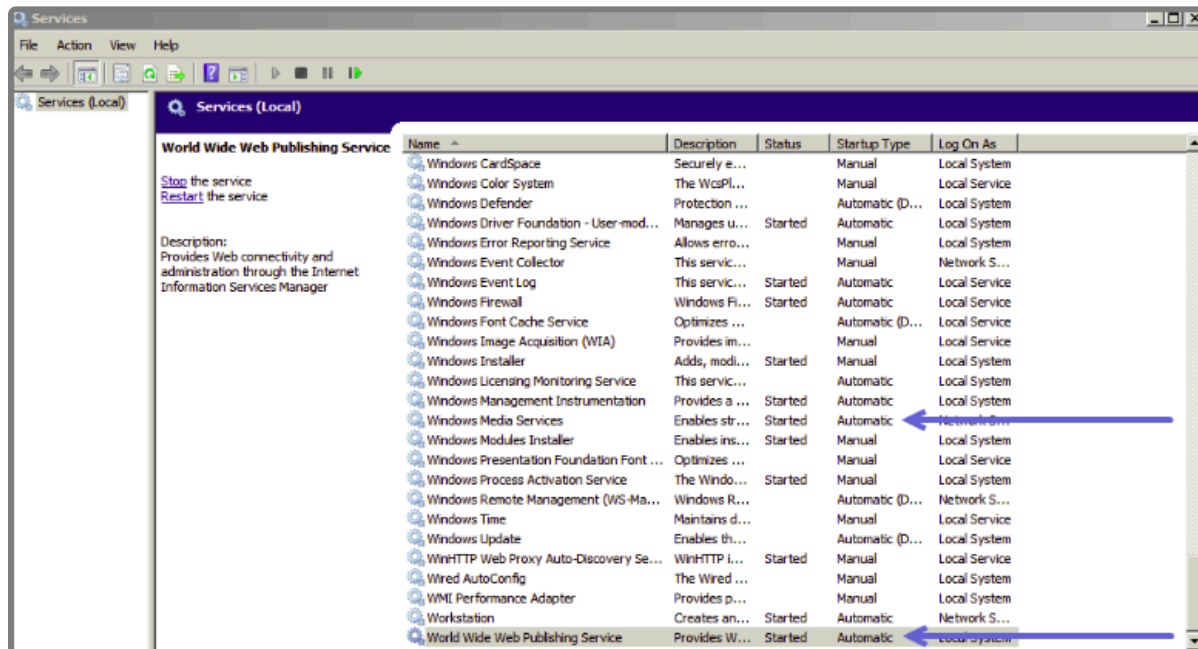
1. Open a web browser and go to *http://localhost*. If you receive a *directory forbidden* screen, or any screen that does not look like Orchid Core VMS, there is another program running that is using port 80.
2. Open the Windows Start Menu and type **Services** into the search bar, or select *Windows Administrative Tools*.



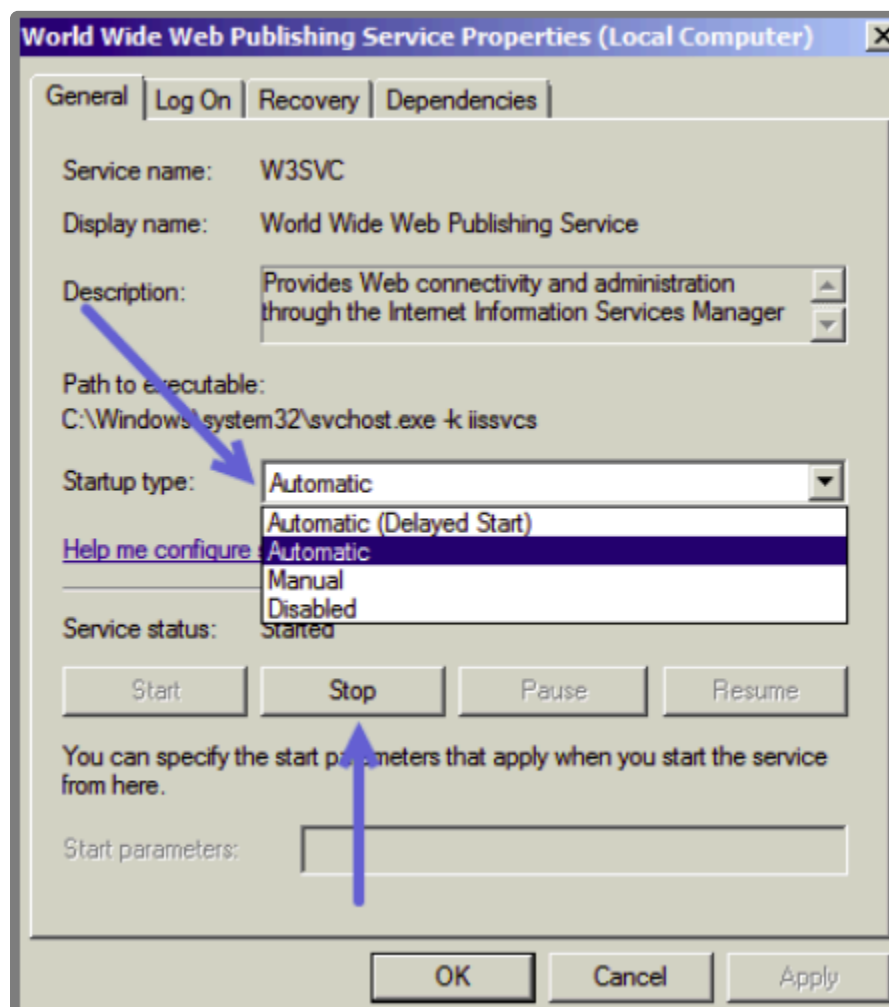
- OR -



3. Click the **Services** icon to open the *Services Manager*.



4. Locate the service called *World Wide Web Publishing Service*.
5. Right-click on the service and click **Properties** to open the service's settings.



6. Click the **Stop** button to stop the service.
7. Change the startup type to *Disabled* to stop the service from automatically starting at boot.
8. Click the **OK** button to save the new settings and close the window.
9. Repeat steps 4-8 for the *Windows Media Services* service. This service will not prevent Orchid Core VMS from starting, but it will prevent it from streaming live video through port 554.
10. Once both services have been stopped and disabled, locate the Orchid Server service. Right-click on it and select **Start** to start the Orchid Server service.

Orchid Core VMS will now be accessible through the browser and will be able to play and record video.

How to Edit a Configuration File in Windows

Beginning with version 2.10, some of the configuration settings can be edited from within the Orchid Core VMS software. (This is done using the *Advanced Settings* feature which is explained in the [Orchid Core VMS Administrator Guide](#).) There are some settings, however, that will still need to be changed by editing the configuration file directly. These settings need to be protected from unauthorized changes because they are critical for program stability and reliability. These critical settings include the following:

• archives.dir	• streampipeline.bgseg.threshold
• database.type	• streampipeline.decode.keyFramesOnly
• logger.dir	• streampipeline.filesplit.motionMode
• orchid.admin.password	• streampipeline.filesplit.recordState
• orchid.uuid	• streampipeline.filesplit.timePeriod
• rtsp.protocol	• streampipeline.mode
• sqlite.filepath	• streampipeline.motionReducer
• streampipeline.bgseg.boxArea	• tls.certificate
• streampipeline.bgseg.dialate	• tls.key
• streampipeline.bgseg.postErode	• webserver.archives.rootpath
• streampipeline.bgseg.preErode	• webserver.html.rootpath
	• webserver.protocol

If it becomes necessary to change one of these critical settings, you can edit the Orchid Core VMS configuration files using a text editor like WordPad or Notepad.



In order to edit Orchid Core VMS's configuration files, you will need to be signed in as an

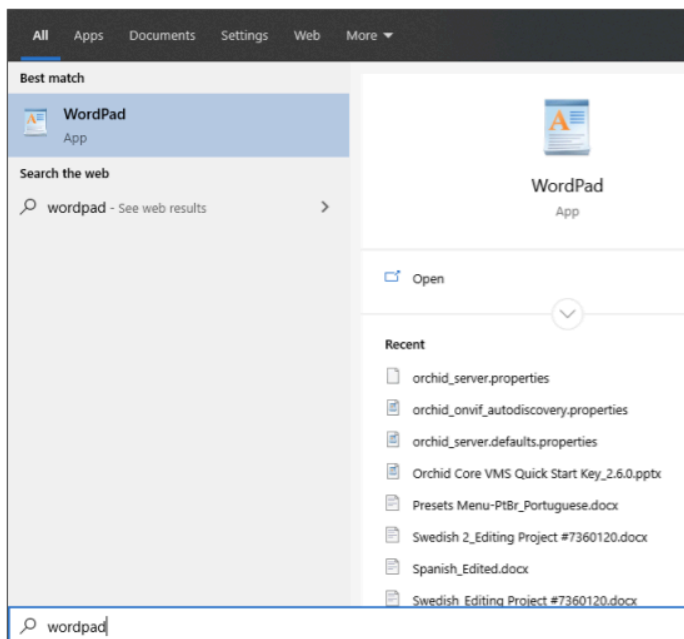
Administrator.

The default locations for Orchid Core VMS's configuration files in Windows are:

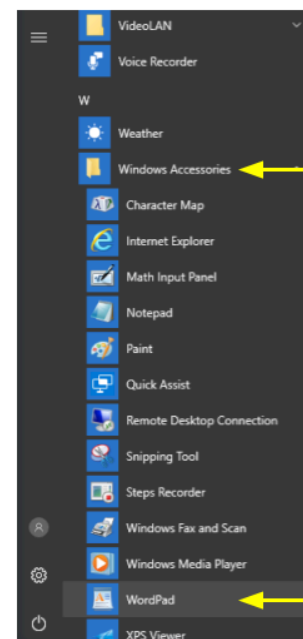
- **Orchid Server Properties:** *C:\Program Files\IPConfigure\Orchid\bin\orchid_server.properties*
 - Stores all of the Orchid Core VMS settings and can be used to update things like the Orchid Core VMS port number, manually update the admin password, etc.
 - Settings entered in this file will override the default settings in the Orchid Server Default Properties file (described below).
- **Orchid Server Default Properties:** *C:\Program Files\IPConfigure\Orchid\bin\orchid_server.defaults.properties*
 - Stores all of the Orchid Core VMS default settings and serves as a good reference. [While you may make changes in this file, settings will be overridden by the Orchid Server Properties file (described above).]
- **Orchid ONVIF Auto-Discovery:** *C:\Program Files\IPConfigure\Orchid\onvif_autodiscovery\orchid_onvif_autodiscovery.properties*
 - Used to edit the settings for the Orchid ONVIF Auto-Discovery service used by Orchid Core VMS.

Refer to the [Installation Support Topics](#) section for a complete list of available properties.

1. Open the Windows start menu and type *Wordpad* into the search bar, or go to *Windows Accessories*

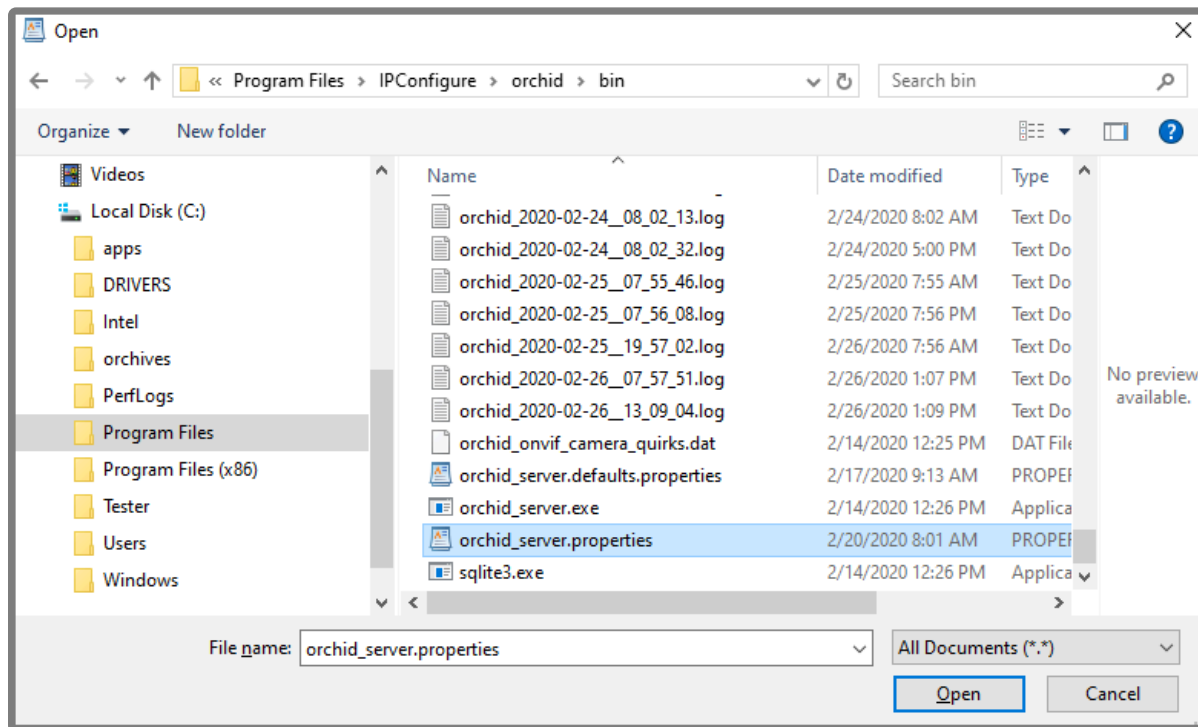


- OR -

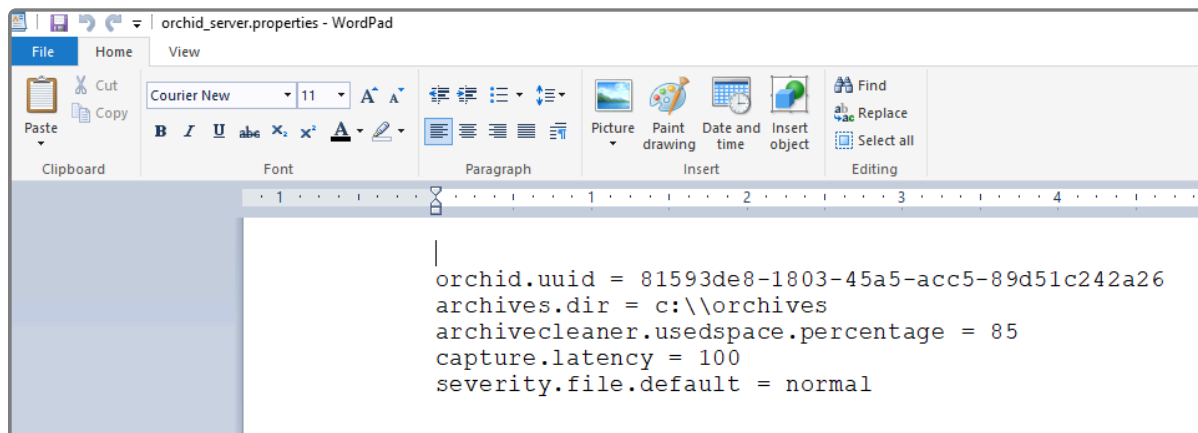


2. Right click on the **WordPad** icon and click *Run as administrator*.
3. Click the **Yes** button to let WordPad make changes to the computer.

4. Select **File/Open**. When the window opens, navigate to the configuration file you need to edit. (If no files appear, ensure the *All Documents* option is selected.)



5. Select the file you want to edit and click the **Open** button.
6. The file you selected will open in WordPad. Make setting changes as necessary.



7. When you are ready to save the file, select **File/Save** to save the configuration file.
8. You must restart the Orchid Server service in Windows to implement the new settings. (See next section.)

How to Manage the Orchid Core VMS Services in Windows

The two services listed below are used by Orchid Core VMS on Windows. If you need to check the status,

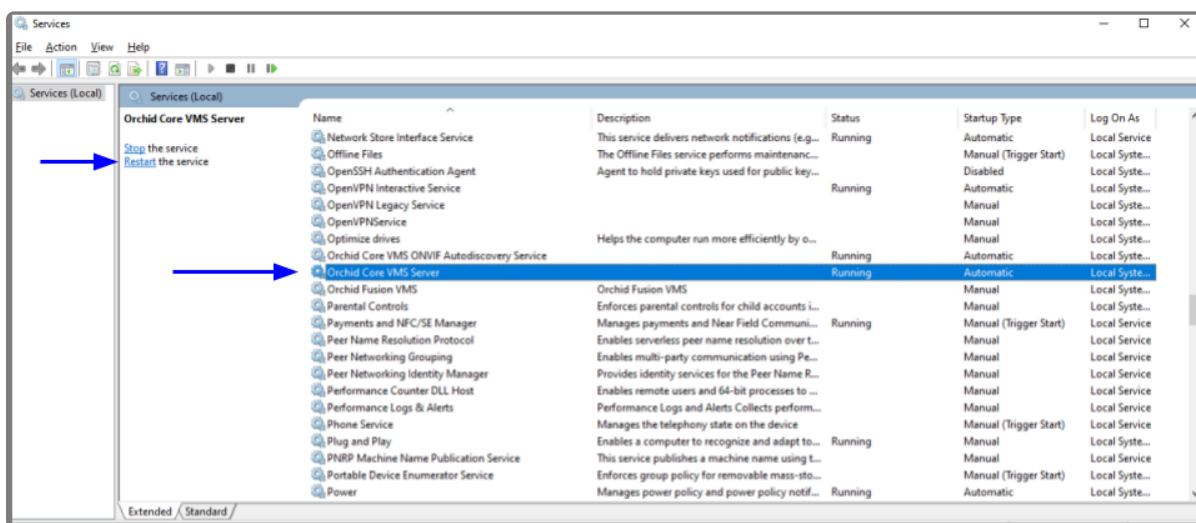
start, or stop one of these services, you can do this through the *Services Manager* whenever necessary. (You will need to restart the appropriate service whenever a change has been made to one of Orchid Core VMS's configuration files.)

- **Orchid Server Service:** The main Orchid Core VMS service that records and archives video.
- **Orchid ONVIF Auto-Discovery Service:** Used by Orchid Core VMS to automatically find cameras that support ONVIF.

✿ You must be signed into the computer as a user with administrator privileges in order to use the *Services Manager*.

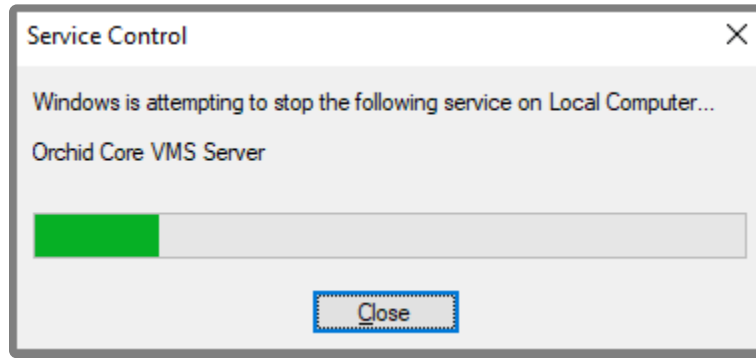
To manage an Orchid Core VMS service:

1. Open the Windows Start Menu and type *Services* into the search bar, or go to *Windows Administrative Tools*.
2. Click the **Services** icon to open the *Services Manager*. The *Services Manager* will display a list of all the services setup in Windows.



3. Scroll through the list and click on the service you need to restart. (Notice that the status of the service will appear in the *Status* column.)
4. Click the **Restart the service** button (at the left of the list of services). (Click the **Stop the Service** link if you need to stop the service.)

A status window will appear to show the progress of the restart. Once the service has restarted successfully, the software will return to the *Services Manager* window; the *Status* column will indicate that the service is *Running*.



Uninstalling Orchid Core VMS for Windows

To remove the Orchid Core VMS software, follow the steps below. (This will remove all files installed and created by Orchid Core VMS except the *C:\orchives* directory.)

1. To uninstall Orchid Core VMS, locate the uninstall file on the computer. The default location for this file is *C:\Program Files\IPConfigure\Orchid\uninstall.exe*.
2. Double-click on the *uninstall* file.
3. Click the **Yes** button to allow the application to make changes to the computer.
4. Click the **Uninstall** button to proceed with the uninstall process. This may take a moment.
5. Once the uninstall is complete, click the **Close** button to exit.

Working in Ubuntu 14.04

Installing Orchid Core VMS on Ubuntu 14.04 LTS

IPConfigure distributes Orchid Core VMS for Ubuntu through debian package files (.deb files). The recommended method for installing the package file is through GDebi Package installer. GDebi can be used either through command line, or through the Graphical User Interface (GUI).

* Orchid Core VMS can only be installed on a 64-bit operating system. If you are currently running a 32-bit operating system, the installer will return an “Architecture not supported” error and Orchid Core VMS installation will fail.

* Orchid Core VMS requires Linux kernel 3.17.0 or greater.

* You must sign in to the computer as a user with “root” or “sudo” privileges.

* The Ubuntu 14.04 and 16.04 installers are different.

1. Download the Orchid .deb file. You can find the latest version of Orchid Core VMS on IPConfigure's website at <http://www.ipconfigure.com/products/orchid#download>.
2. Once you've downloaded the Orchid Core VMS installation package, decide whether you want to perform the installation via the [Command Line](#) or the [GUI](#).

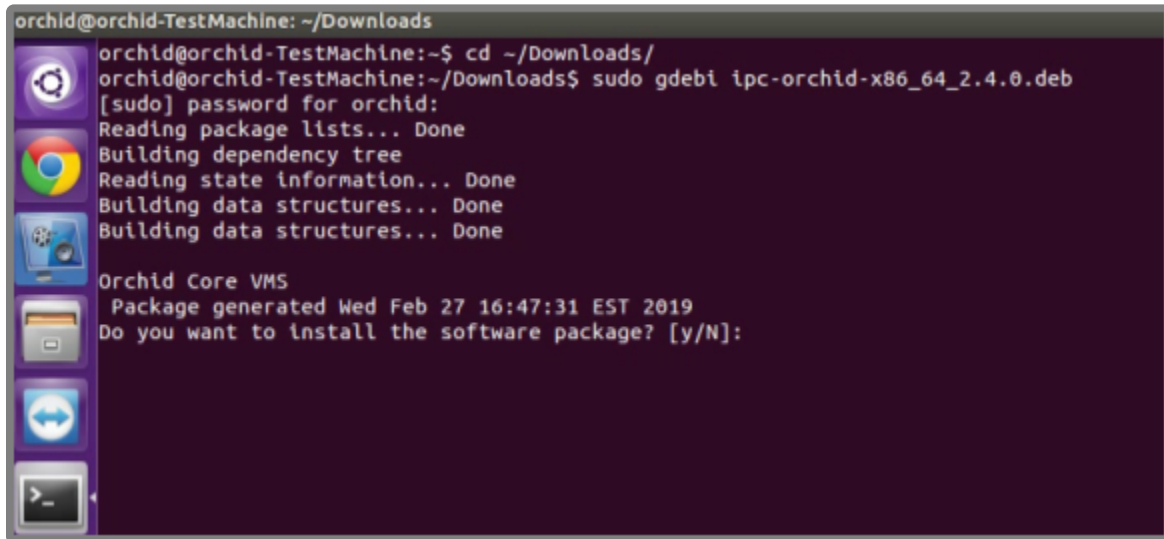
Installing through the Command Line (Ubuntu Server)

1. Open the *Terminal* program (**CTRL+ALT+T**) and navigate to the directory where you downloaded the Orchid Core VMS installation package. (The package is probably stored in the *Downloads* folder.)
2. Unless GDebi has been installed manually, it will need to be installed using the following command:

sudo apt-get install gdebi-core

It may take a few minutes for GDebi to install, depending on the speed of your system.

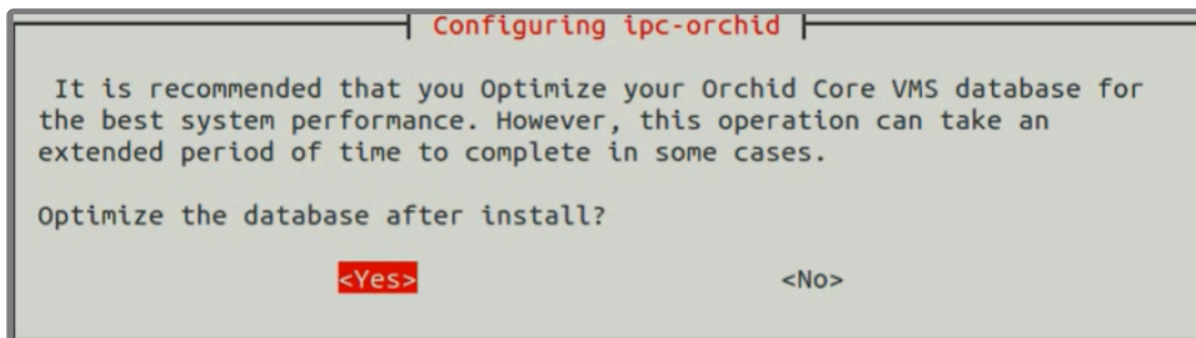
3. The GDebi command can now be used to install the Orchid Core VMS debian package. The syntax is **sudo gdebi (package-name).deb**. For example, if the name of the package is *ipc-orchid-x86_64_2.6.0-sysvinit.deb*, the following command would be used: **sudo gdebi ipc-orchid-x86_64_2.6.0-sysvinit.deb**



```
orchid@orchid-TestMachine: ~/Downloads
orchid@orchid-TestMachine:~$ cd ~/Downloads/
orchid@orchid-TestMachine:~/Downloads$ sudo gdebi ipc-orchid-x86_64_2.4.0.deb
[sudo] password for orchid:
Reading package lists... Done
Building dependency tree
Reading state information... Done
Building data structures... Done
Building data structures... Done

Orchid Core VMS
Package generated Wed Feb 27 16:47:31 EST 2019
Do you want to install the software package? [y/N]:
```

4. The system may ask for your Ubuntu user password. Type in the password and press **Enter**.
5. The system will then ask if you want to install the software. Enter **Y** for yes, and press **Enter**.
6. If this is a software upgrade, the installer will give you the opportunity to optimize the database. Optimization is recommended (since it will improve the overall performance of the system, especially notable in larger systems with video archives greater than 40 TB). Be aware, however, that the optimization process may take a while to complete (and Orchid Core VMS will be unavailable during this time).

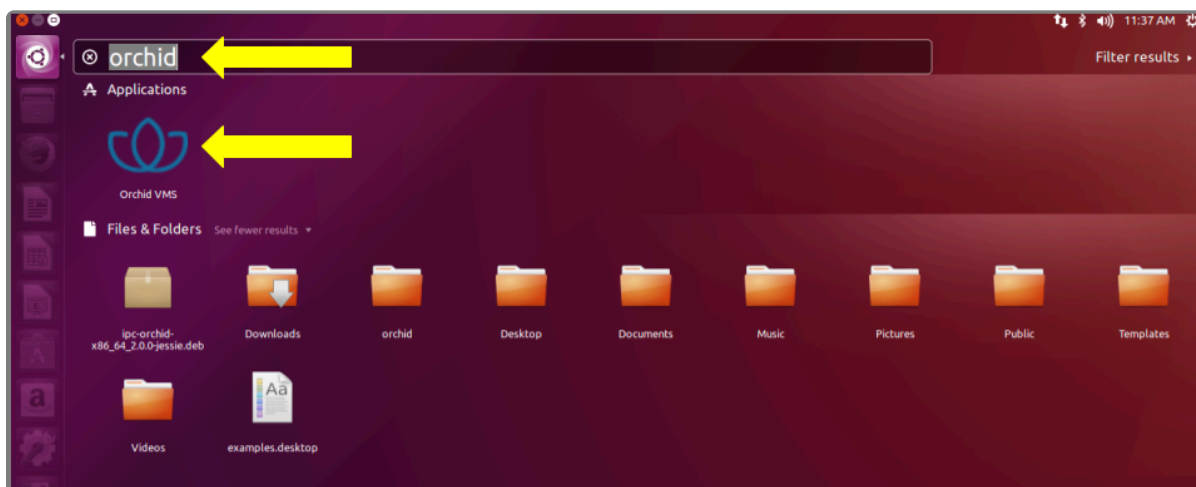
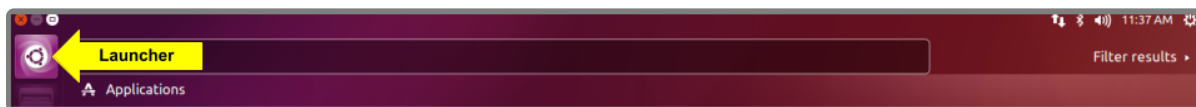


- To proceed with optimization, use the **Tab** key to highlight Yes, and press **Enter**. (Skip ahead to step 10.)
7. On a new installation, you will be asked to accept the End User License Agreement. After reading the agreement, press the **Tab** key to select Ok, then the **Enter** key to accept it.
 8. You will then be asked to accept the agreement in a separate prompt. Use the **Left Arrow** or **Tab** key to select **Yes**, and press **Enter** to accept it.
 9. Next, the installer will ask you to set the Web Server Port, Admin Password, and the Archive Directory for storage.
 - By default, the web server port is set to port 80 (which is the recommended port for most installations). If Orchid Core VMS needs to use a different port, update the port, then press the

Tab key to select *Ok*, and press **Enter**.

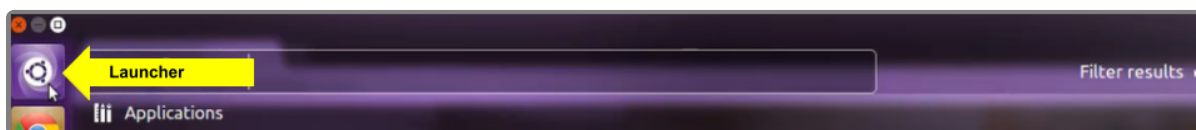
- Enter the password you would like to set for the default admin account, then press the **Tab** key to select *Ok*, and press **Enter**.
- Set the directory for video archives. The default folder is */archives*. Enter a new archives location, if needed, then press the **Tab** key to select *Ok*, and press **Enter**.

10. The installation will complete automatically without any additional prompts. This process may take a few minutes (and perhaps longer if the optimization process was selected). The Orchid Core VMS services start automatically once the package installation is done, after which you can access the Orchid Core VMS user interface in your web browser. (Please refer to the *Sign in* topic in the [Orchid Core VMS Administrator Guide](#) for more details.)
11. You can automatically launch a browser to Orchid Core VMS using the menu link installed on your server:
 - a. Click on the **Launcher** icon in the top left corner of the screen.
 - b. Type **Orchid** in the search box, then click the **Orchid VMS** icon listed under *Applications*.

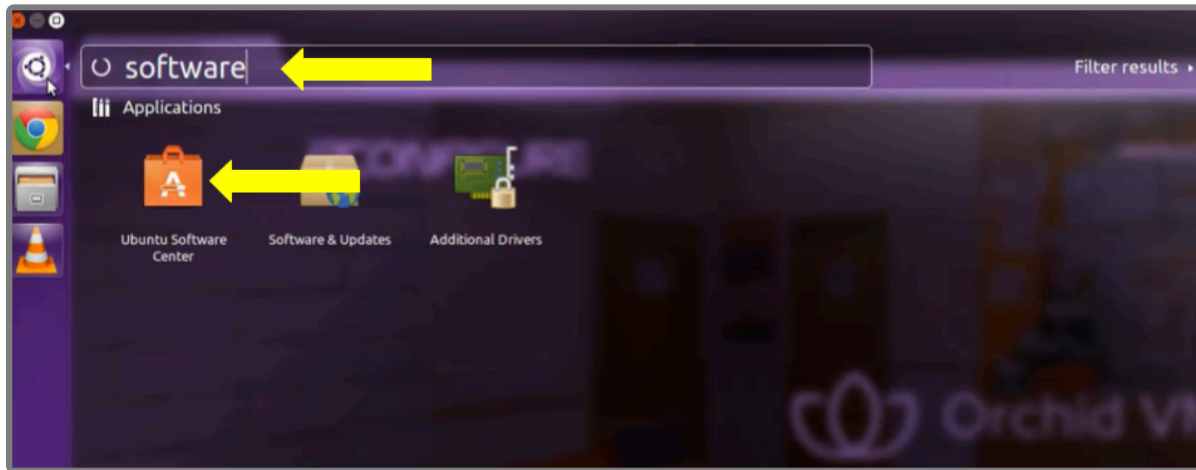


Installing through the GUI (Ubuntu Desktop)

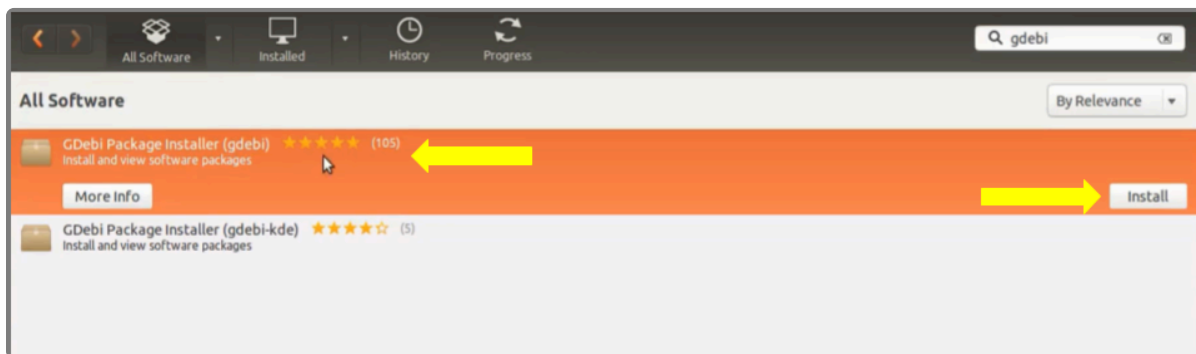
1. Click on the **Launcher** icon and then type in **Software Center**.



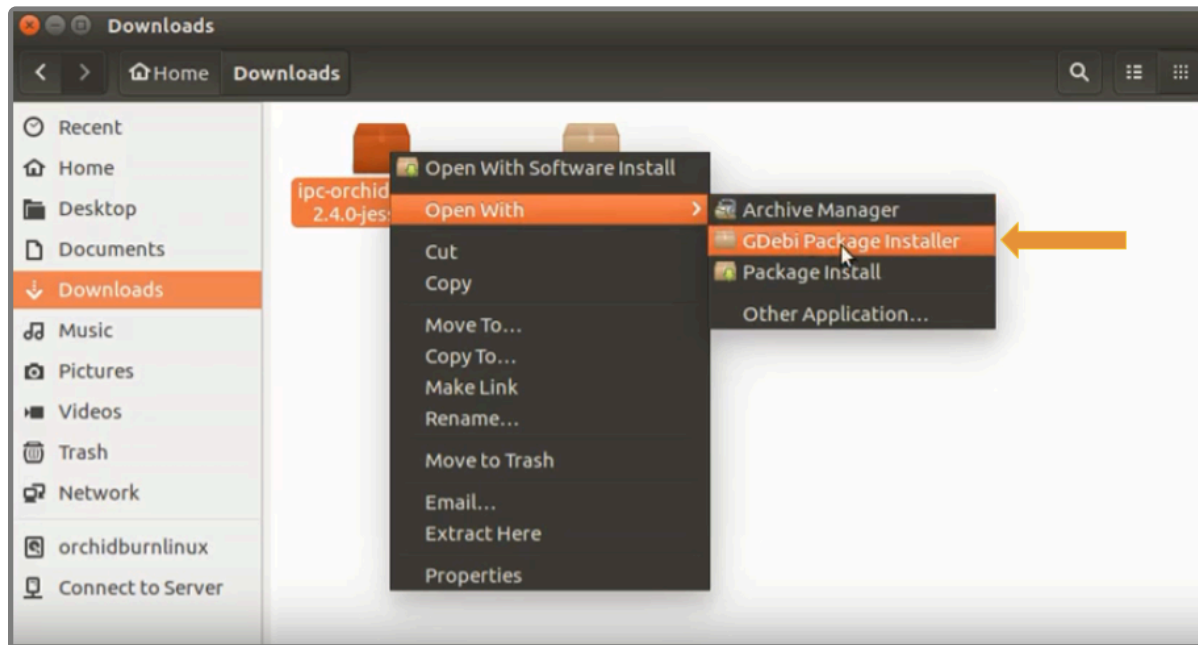
2. Click the **Ubuntu Software Center** icon to open it.



3. In the search bar in the top right-hand corner of the Software Center, type **gdebi**.
4. Select *GDebi Package Installer (gdebi)* (which should be the first result), and then click the **Install** button.



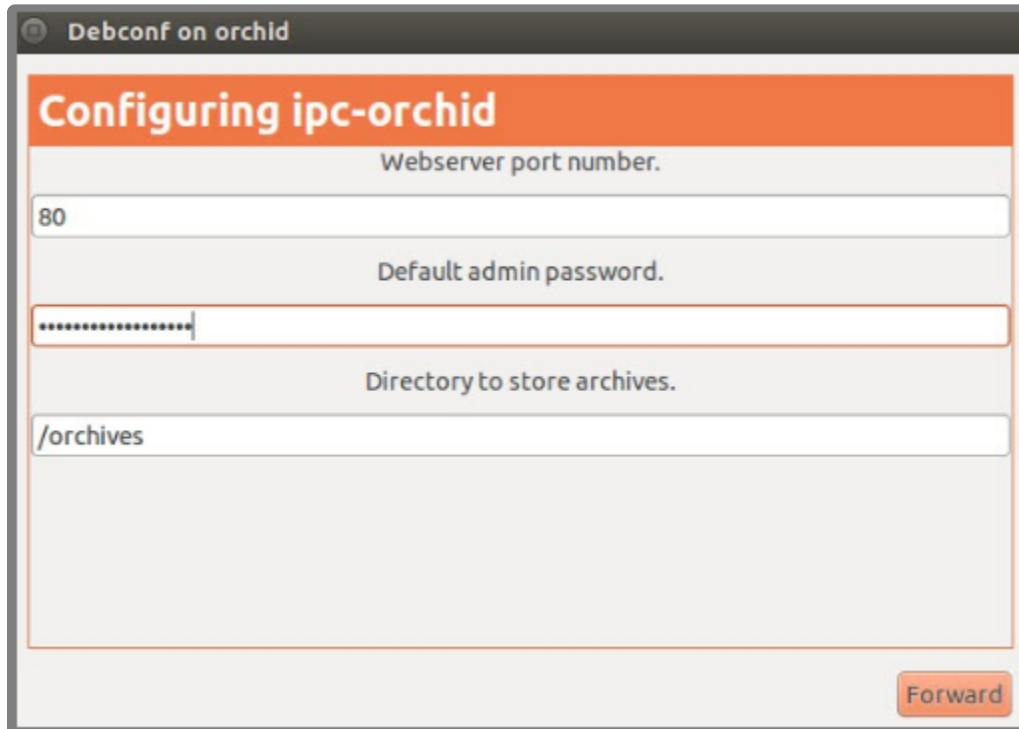
5. After GDebi has finished installing, click the **Files** icon to open the *Files Explorer*, then navigate to the folder storing your Orchid Core VMS package (.deb file). (The package is probably stored in the *Downloads* folder.)
6. Right-click on the Orchid Core VMS package, hover over *Open With* with the mouse, then select the **GDebi Package Installer** option.



7. Once the GDebi package installer loads, click the **Install Package** button in the top right-hand corner of the window.
8. You may be asked for your system password. Type it in and click **OK**.
9. If this is a software upgrade, the next screen will give you the opportunity to optimize the database. Optimization is recommended (since it will improve the overall performance of the system, especially notable in larger systems with video archives greater than 40 TB). Be aware, however, that the optimization process may take a while to complete (and Orchid Core VMS will be unavailable during this time).



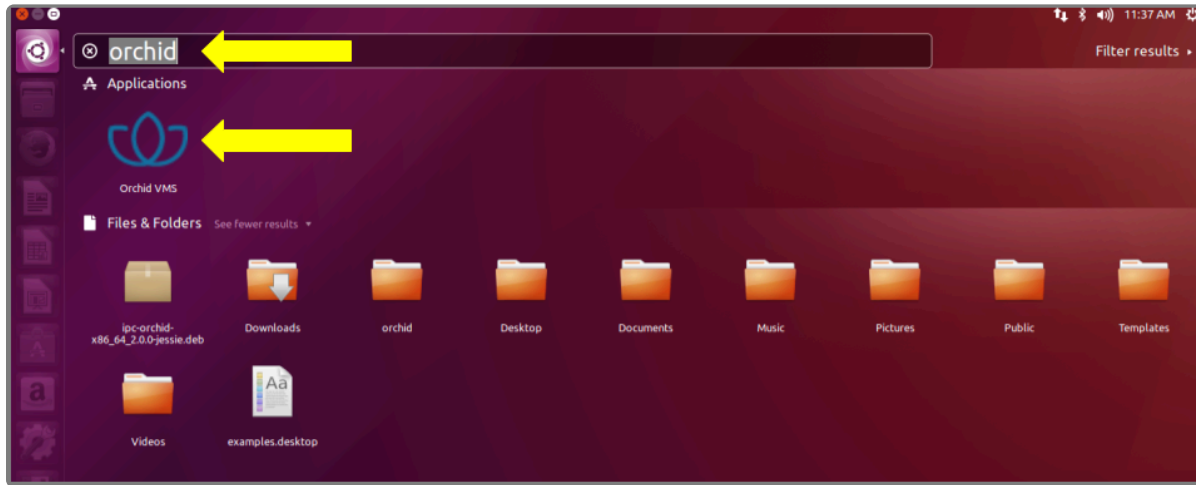
- To proceed with optimization, mark the checkbox and click the **Forward** button. (Skip ahead to step 12.)
10. If this is a new installation, you will be asked to accept the End User License Agreement. After you read the agreement, mark the *Do you accept the terms of agreement* checkbox and click the **Forward** button.
 11. Next, the installer will ask you to set the Web Server Port, Admin Password, and the Archive Directory for storage.



- By default, the web server port is set to port 80, which is recommended for most installations. Update the port number only if Orchid Core VMS needs to use a port other than 80.
 - Enter the password you would like to set for the default admin account.
 - The default folder for video archives on Linux is `/orchives`. Enter a new archives location, if needed.
12. When finished, click the **Forward** button.

The installation will complete automatically without any additional prompts. This may take a few minutes (and perhaps longer if the optimization process was selected).
 13. Once the package installer displays an “Installation Finished” message at the top of the screen, click the **Close** button to close the installer and complete the installation. The Orchid Core VMS services will start automatically once the package installation is done, after which you can access the Orchid Core VMS user interface in your web browser. (Please refer to the *Sign in* topic in the [Orchid Core VMS Administrator Guide](#) for more details.)
 14. You can automatically launch a browser to Orchid Core VMS using the menu link installed on your server:
 - a. Click on the **Launcher** icon in the top left corner of the screen.
 - b. Type **Orchid** in the search box, then click the **Orchid VMS** icon listed under Applications.





How to Edit a Configuration File in Ubuntu 14.04 LTS

Beginning with version 2.10, some of the configuration settings can be edited from within the Orchid Core VMS software. (This is done using the *Advanced Settings* feature which is explained in the [Orchid Core VMS Administrator Guide](#).) There are some settings, however, that will still need to be changed by editing the configuration file directly. These settings need to be protected from unauthorized changes because they are critical for program stability and reliability. These critical settings include the following:

• archives.dir	• streampipeline.bgseg.threshold
• database.type	• streampipeline.decode.keyFramesOnly
• logger.dir	• streampipeline.filesplit.motionMode
• orchid.admin.password	• streampipeline.filesplit.recordState
• orchid.uuid	• streampipeline.filesplit.timePeriod
• rtsp.protocol	• streampipeline.mode
• sqlite.filepath	• streampipeline.motionReducer
• streampipeline.bgseg.boxArea	• tls.certificate
• streampipeline.bgseg.dialate	• tls.key
• streampipeline.bgseg.postErode	• webserver.archives.rootpath
• streampipeline.bgseg.preErode	• webserver.html.rootpath
	• webserver.protocol

If it becomes necessary to change one of these critical settings, you can edit the Orchid Core VMS configuration files using standard text editors in Linux. This section will describe two methods for editing the configuration files: using the [Command Line](#) and using the [Graphical User Interface](#).

* In order to edit text files as the root user, you will need administrator access to the computer on which Orchid Core VMS is installed.

The default locations for Orchid Core VMS's configuration files in Linux are:

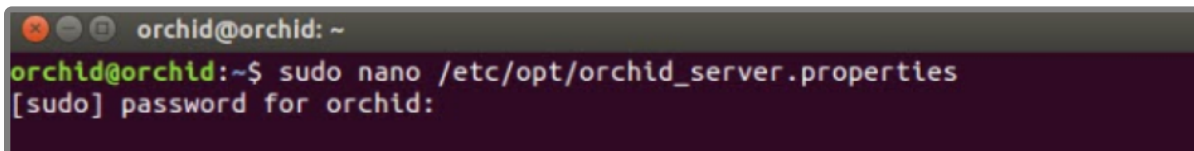
- **Orchid Server Properties:** `/etc/opt/orchid_server.properties`
 - Stores all of the Orchid Core VMS settings and can be used to update things like the port number, manually update the admin password, etc.
 - Settings entered in this file will override the default settings in the *Orchid Server Default Properties* file (described below).
- **Orchid Server Default Properties:** `/etc/opt/orchid_server.properties.default`
 - Stores all of the Orchid Core VMS default settings and may serve as a good reference. [Any changes made to this file will be ignored.]
- **Orchid ONVIF Auto-Discovery:** `/etc/opt/orchid_onvif_autodiscovery.properties`
 - Used to edit the default settings for the ONVIF auto-discovery service used by Orchid Core VMS.

Refer to the [Installation Support Topics](#) section for a complete list of available properties.

Editing Configuration Files through the Command Line:

1. Open the *Terminal* program (**CTRL+ALT+T**) and open Orchid Core VMS's configuration file in the nano text editor by typing the following command: **sudo nano /etc/opt/orchid_server.properties**. Then press **Enter**.

* If a different file needs to be edited, such as the Orchid ONVIF auto-discovery configuration file, change the filename in the command above, as needed.



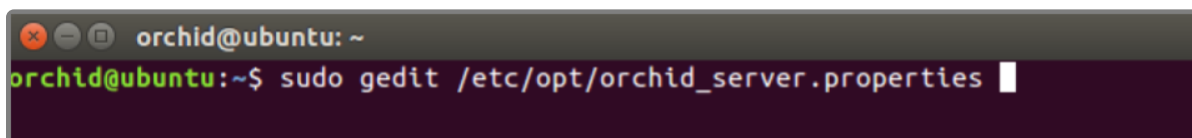
```
orchid@orchid: ~  
orchid@orchid:~$ sudo nano /etc/opt/orchid_server.properties  
[sudo] password for orchid:
```

2. After running that command, you will be prompted to enter the `[sudo] password` for your user. Type the password used to sign in to your computer, then press **Enter**. The configuration file will open.
3. Use the arrow keys to move the cursor around the screen and update any default settings. You may also add new settings to the end of the file.
4. When you are ready to save the file, click **CTRL+X** on the keyboard, then type **Y** to save the file and close the text editor. If you do not want to save the file, type **N** (instead of Y) after typing **CTRL+X**.
5. Restart the Orchid Server service in [Linux](#) to implement the new settings.

Editing Configuration Files through the Graphical User Interface (GUI):

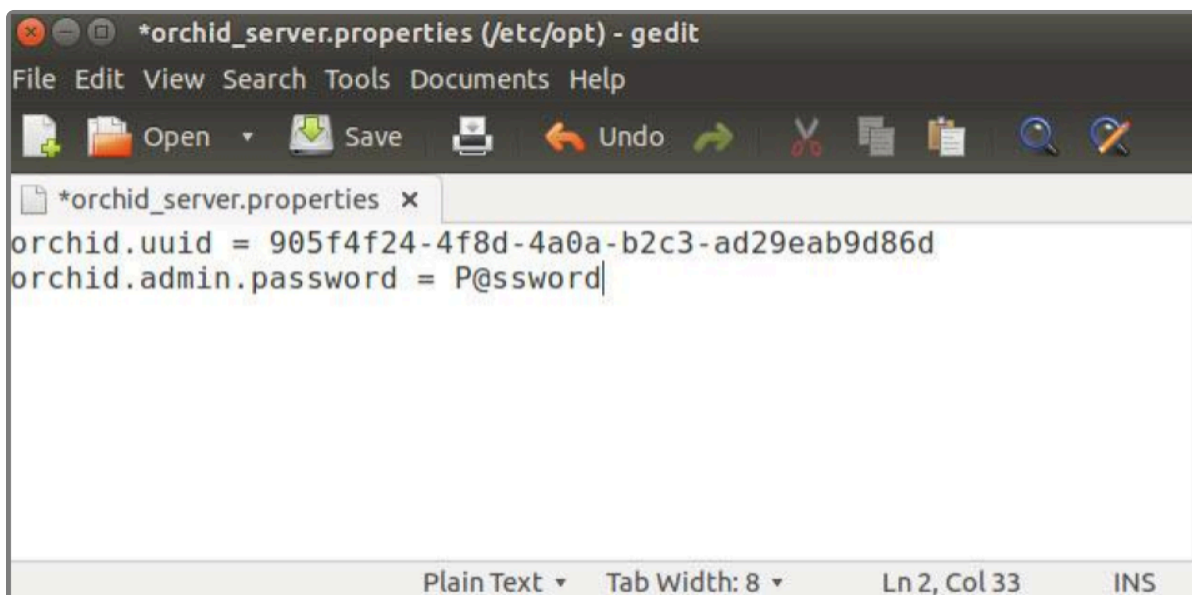
1. Open the *Terminal* program (**CTRL+ALT+T**) and open Orchid Core VMS's configuration file by typing the following command: **sudo gedit /etc/opt/orchid_server.properties**. Then press **Enter**.

✿ If a different file needs to be edited, such as the Orchid ONVIF auto-discovery configuration file, change the filename in the command above, as needed.



```
orchid@ubuntu: ~  
orchid@ubuntu:~$ sudo gedit /etc/opt/orchid_server.properties
```

2. After running that command, you will be prompted to enter your password to perform administrative tasks. Type the same password you use to sign in to your computer, then press **Enter**.
3. A text editor will open in a new window allowing you to edit the configuration file. Update default settings as needed. You may also add new settings to the end of the file.



```
*orchid_server.properties (/etc/opt) - gedit  
File Edit View Search Tools Documents Help  
Open Save Undo  
*orchid_server.properties x  
orchid.uuid = 905f4f24-4f8d-4a0a-b2c3-ad29eab9d86d  
orchid.admin.password = P@ssword  
Plain Text Tab Width: 8 Ln 2, Col 33 INS
```

4. When you are ready to save the file, click **File/Save** to save the configuration file.
5. You must restart the Orchid Server service in [Linux](#) to implement the new settings.

How to Manage the Orchid Core VMS Services Through the Command Line

Orchid Core VMS runs on Linux as a service. If you need to check the status, start, or stop one of these services, you can do this from the command line.

There are two main services used by Orchid Core VMS on Linux:

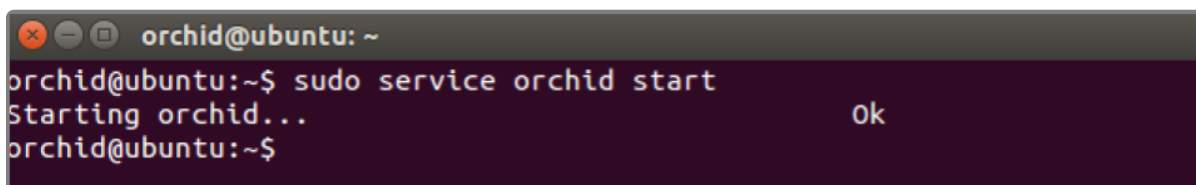
- **Orchid Server Service:** The main Orchid Core VMS service that records and archives video.
- **Orchid ONVIF Auto-Discovery Service:** Used by Orchid Core VMS to automatically find cameras that support ONVIF.

Tips

- After you've configured your Orchid Core VMS properties and started the services, you should check the status of both services to verify Orchid Core VMS is running.
- You will need to restart the services whenever a change has been made to the Orchid Core VMS configuration files.

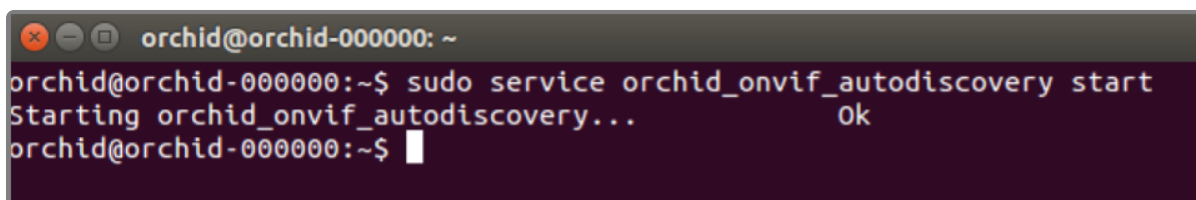
To manage the Orchid Server service from the command line:

1. Open the *Terminal* program (**CTRL+ALT+T**).
2. Type the following command: **sudo service orchid (command)** (where the *command* is **start**, **stop**, **restart**, or **status**). Then press **Enter**.



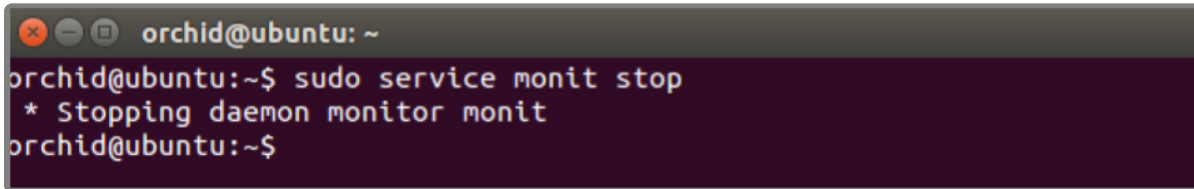
```
orchid@ubuntu: ~  
orchid@ubuntu:~$ sudo service orchid start  
Starting orchid... ok  
orchid@ubuntu:~$
```

✿ This set of commands will only manage the Orchid Server service. If you need to manage the Orchid ONVIF Auto-Discovery Service, replace **orchid** with **orchid_onvif_autodiscovery** in the command line as in the example below.



```
orchid@orchid-000000: ~  
orchid@orchid-000000:~$ sudo service orchid_onvif_autodiscovery start  
Starting orchid_onvif_autodiscovery... ok  
orchid@orchid-000000:~$
```

- ✳ As a fail-safe measure, the Monit Service Manager will restart the Orchid Server and Orchid ONVIF Auto-Discovery services if they go down. In order to stop these services, the Monit Service Manager should be stopped first (using the command in the example below).



```
orchid@ubuntu: ~  
orchid@ubuntu:~$ sudo service monit stop  
* Stopping daemon monitor monit  
orchid@ubuntu:~$
```

How to Manage the Orchid Core VMS Services Through the GUI

Orchid Core VMS runs on Linux as a service. If you need to check the status, start, or stop one of these services, you can do this from the GUI.

There are two main services used by Orchid Core VMS on Linux:

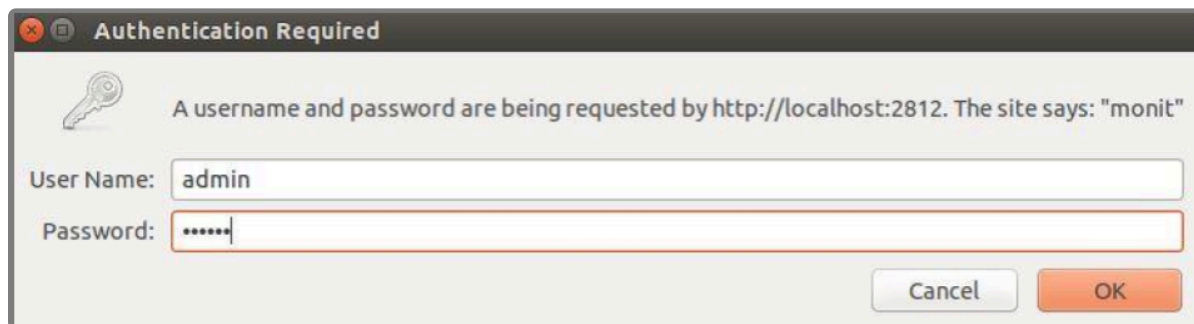
- **Orchid Server Service:** The main Orchid Core VMS service that records and archives video.
- **Orchid ONVIF Auto-Discovery Service:** Used by Orchid Core VMS to automatically find cameras that support ONVIF.

Tips

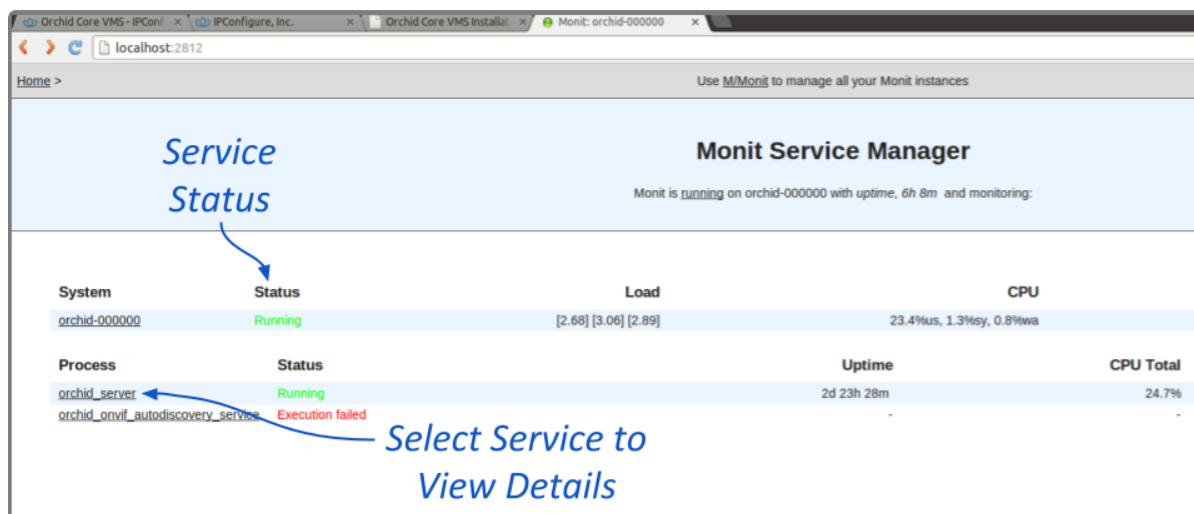
- After you've configured your Orchid Core VMS properties and started the services, you should check the status of both services to verify Orchid Core VMS is running.
- You will need to restart the services whenever a change has been made to the Orchid Core VMS configuration files.

To manage the Orchid Core VMS services from a web browser running on the same computer as the service:

1. Open a web browser and type `http://localhost:2812` into the address bar to access Monit (Orchid Core VMS's process monitor).
2. You will be asked for a username and password. The username is `admin` and the password is `Orc#1d` (unless it was manually changed through Monit's configuration file).



A list of the services setup with Monit will appear, which will include *orchid_server* and *orchid_onvif_autodiscovery_service*. The status of each service is listed in the *Status* column.



3. Click the name of the service you need to stop, start, or restart. A detailed information screen for the monitored service you selected will appear.

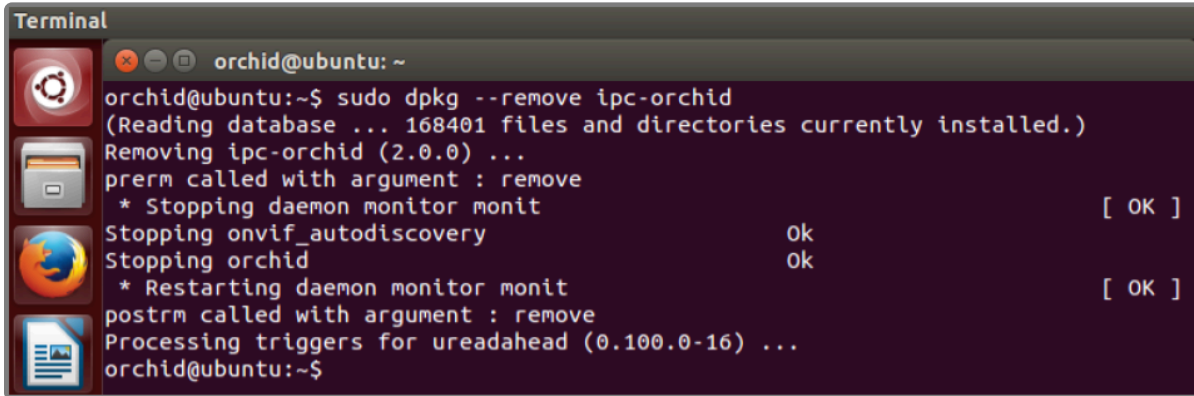
Process status	
Parameter	Value
Name	orchid_server
Pid file	/var/run/orchid.pid
Status	Running
Monitoring mode	active
Monitoring status	Monitored
Start program	/etc/init.d/orchid start' timeout 60 second(s)
Stop program	/etc/init.d/orchid stop' timeout 30 second(s)
Existence	If doesn't exist 1 times within 1 cycle(s) then restart else if succeeded 1 times within 1 cycle(s) then alert
Data collected	Fri, 07 Jul 2017 08:58:47
Process id	9367
Parent process id	1
Process uptime	1d 21h 55m
Children	0
CPU usage	3.2% (Usage / Number of CPUs)
Total CPU usage (incl. children)	3.2%
Memory usage	11.4% [871352kB]
Total memory usage (incl. children)	11.4% [871352kB]
Pid	If changed 1 times within 1 cycle(s) then alert
Ppid	If changed 1 times within 1 cycle(s) then alert
<div> Start service Stop service Restart service Disable monitoring </div>	

- Click the **Stop Service** button to stop the selected service. This action will keep the service off until the **Start Service** button is clicked.
- Click the **Start Service** button at the bottom of the screen to start the selected service.
- Click the **Restart Service** button to restart the service. The status of the service will update from *Running* to *Running-restart pending*. Once the service has restarted successfully, the status will return to *Running*.

Uninstalling Orchid Core VMS in Ubuntu 14.04

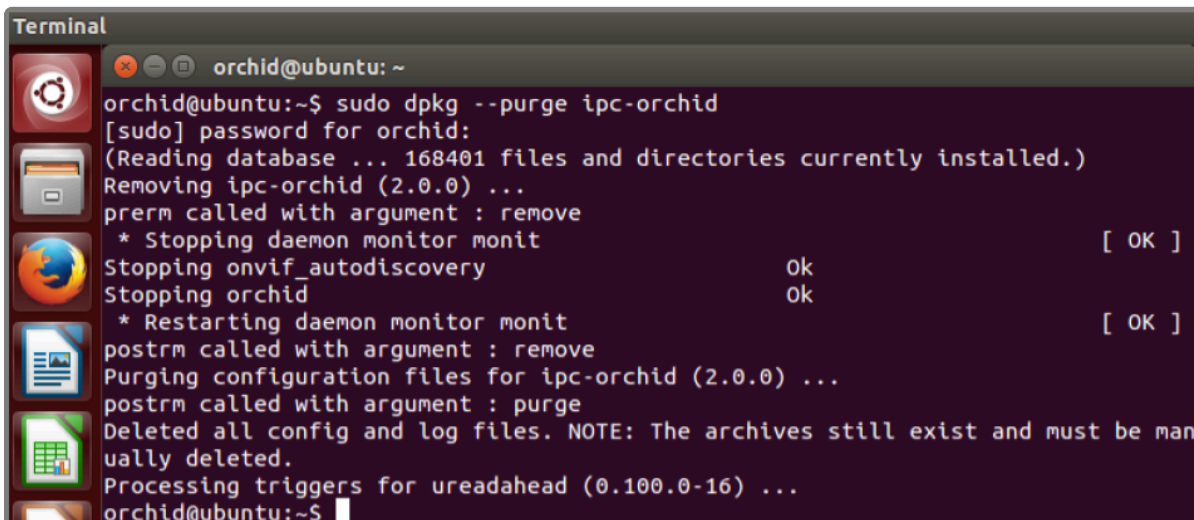
There are a couple of options for removing the Orchid Core VMS software. The *Remove* command will uninstall all files installed and created by Orchid Core VMS except the configuration files and the */archives* directory. The *Purge* command will uninstall all files installed and created by Orchid Core VMS except the */archives* directory.

- Open the *Terminal* program (**CTRL+ALT+T**).
- To uninstall Orchid Core VMS, do either of the following:
 - To uninstall Orchid Core VMS (while keeping the configuration files and the archives), type the following command, then press **Enter**, and enter the password when prompted to do so: **sudo dpkg --remove ipc-orchid**

A terminal window titled "Terminal" with a dark background and light text. The prompt is "orchid@ubuntu: ~". The user enters the command "sudo dpkg --remove ipc-orchid". The output shows the package being removed, with status updates for "daemon monitor monit", "onvif_autodiscovery", and "orchid". The process ends with "Processing triggers for ureadahead (0.100.0-16) ...".

```
Terminal
orchid@ubuntu: ~
orchid@ubuntu:~$ sudo dpkg --remove ipc-orchid
(Reading database ... 168401 files and directories currently installed.)
Removing ipc-orchid (2.0.0) ...
prerm called with argument : remove
* Stopping daemon monitor monit [ OK ]
Stopping onvif_autodiscovery      ok
Stopping orchid                   ok
* Restarting daemon monitor monit [ OK ]
postrm called with argument : remove
Processing triggers for ureadahead (0.100.0-16) ...
orchid@ubuntu:~$
```

- To uninstall Orchid Core VMS (keeping only the archives), type the following command, then press **Enter**, and enter the password when prompted to do so: **sudo dpkg --purge ipc-orchid**

A terminal window titled "Terminal" with a dark background and light text. The prompt is "orchid@ubuntu: ~". The user enters the command "sudo dpkg --purge ipc-orchid". The output shows the package being purged, with status updates for "daemon monitor monit", "onvif_autodiscovery", and "orchid". It also shows that configuration files are being purged and a note that archives still exist. The process ends with "Processing triggers for ureadahead (0.100.0-16) ...".

```
Terminal
orchid@ubuntu: ~
orchid@ubuntu:~$ sudo dpkg --purge ipc-orchid
[sudo] password for orchid:
(Reading database ... 168401 files and directories currently installed.)
Removing ipc-orchid (2.0.0) ...
prerm called with argument : remove
* Stopping daemon monitor monit [ OK ]
Stopping onvif_autodiscovery      ok
Stopping orchid                   ok
* Restarting daemon monitor monit [ OK ]
postrm called with argument : remove
Purging configuration files for ipc-orchid (2.0.0) ...
postrm called with argument : purge
Deleted all config and log files. NOTE: The archives still exist and must be manually deleted.
Processing triggers for ureadahead (0.100.0-16) ...
orchid@ubuntu:~$
```


Working in Ubuntu 16.04 to 20.04

Installing Orchid Core VMS on Ubuntu 16.04 to 20.04 (LTS versions)

IPConfigure distributes Orchid Core VMS for Ubuntu through debian package files (.deb files). The recommended method for installing the package file is through GDebi Package installer. GDebi can be used either through command line, or through the Graphical User Interface (GUI).

The installation instructions provided for Ubuntu 16.04 LTS also apply to Ubuntu 18.04, Ubuntu 20.04, Debian Jessie and Raspbian Jessie. Please note, however, that there is a different installation package file for Ubuntu, Debian Jessie, and Raspbian Jessie.

* Orchid Core VMS can only be installed on a 64-bit operating system. If you are currently running a 32-bit operating system, the installer will return an “Architecture not supported” error and Orchid Core VMS installation will fail.

* Orchid Core VMS requires Linux kernel 3.17.0 or greater.

* You must sign in to the computer as a user with “root” or “sudo” privileges.

* The Ubuntu 14.04 and 16.04 installers are different.

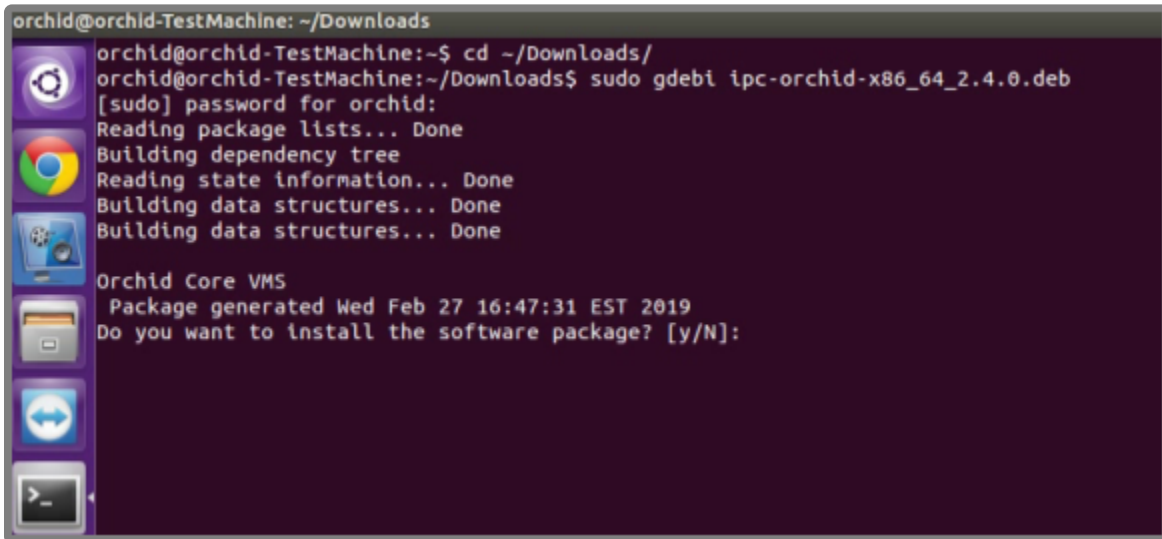
1. Download the Orchid .deb file. You can find the latest version of Orchid Core VMS (for Ubuntu 16.04, Ubuntu 18.04, Debian Jessie, and Raspbian Jessie) on IPConfigure’s website at <http://www.ipconfigure.com/products/orchid#download>.
2. Once you’ve downloaded the Orchid Core VMS installation package, decide whether you want to perform the installation via the [Command Line](#) or the [GUI](#).

Installing through the Command Line (Ubuntu Server)

1. Open the *Terminal* program (**CTRL+ALT+T**) and navigate to the directory where you downloaded the Orchid Core VMS installation package. (The package is probably stored in the *Downloads* folder.)
2. Unless GDebi has been installed manually, it will need to be installed by typing the following command: **sudo apt-get install gdebi-core**. Then press **Enter**.

It may take a few minutes for GDebi to install, depending on the speed of your system.

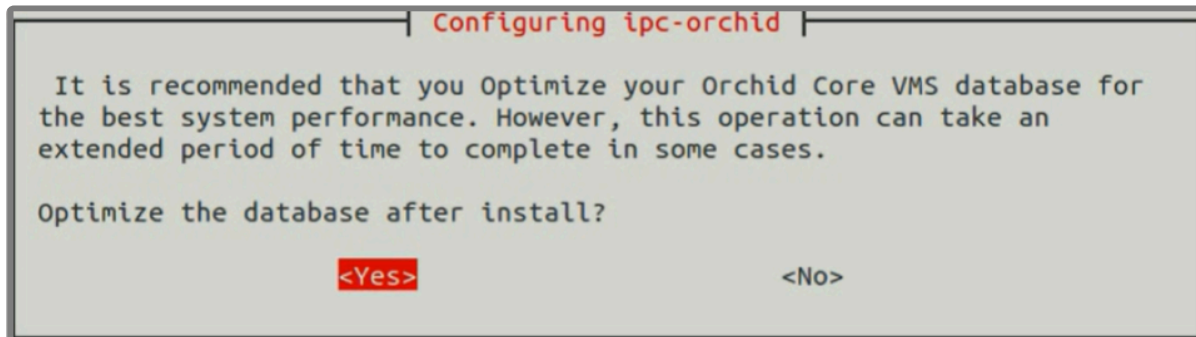
3. The GDebi command can now be used to install the Orchid Core VMS debian package. The syntax is **sudo gdebi (package-name).deb**. For example, if the name of the package is *ipc-orchid-x86_64_2.6.0-jessie.deb*, type the following command: **sudo gdebi ipc-orchid-x86_64_2.6.0-jessie.deb**. Then press **Enter**.



```
orchid@orchid-TestMachine: ~/Downloads
orchid@orchid-TestMachine:~$ cd ~/Downloads/
orchid@orchid-TestMachine:~/Downloads$ sudo gdebi ipc-orchid-x86_64_2.4.0.deb
[sudo] password for orchid:
Reading package lists... Done
Building dependency tree
Reading state information... Done
Building data structures... Done
Building data structures... Done

Orchid Core VMS
Package generated Wed Feb 27 16:47:31 EST 2019
Do you want to install the software package? [y/N]:
```

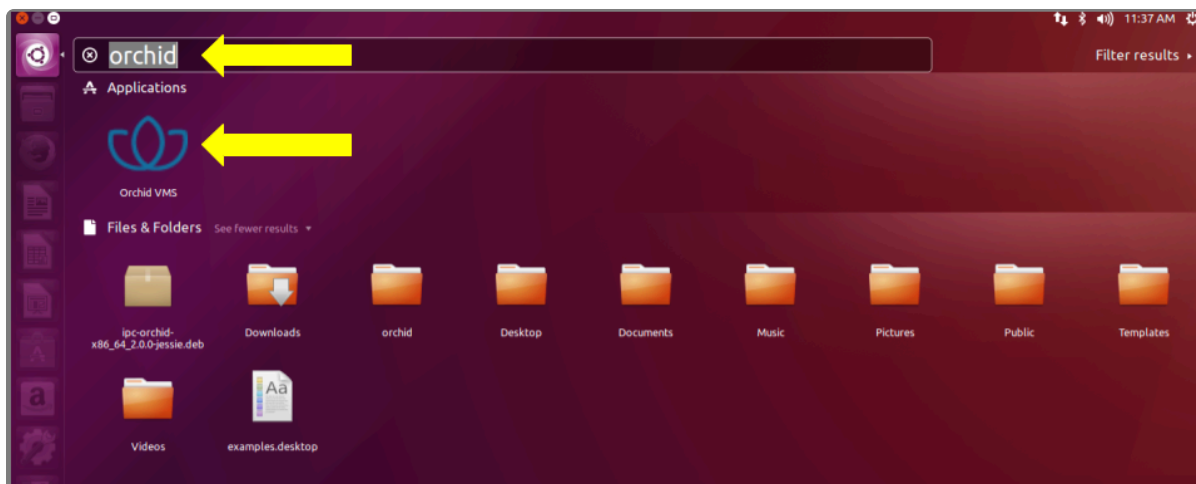
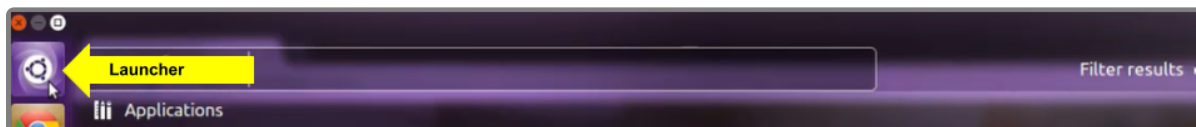
4. The system may ask for your Ubuntu user password. Type in the password and press **Enter**.
5. The system will then ask if you want to install the software. Enter **Y** for yes, and press **Enter**.
6. If this is a software upgrade, you will be given the opportunity to optimize the database. Optimization is recommended (since it will improve the overall performance of the system, especially notable in larger systems with video archives greater than 40 TB). Be aware, however, that the optimization process may take a while to complete (and Orchid Core VMS will be unavailable during this time).



- To proceed with optimization, use the **Tab** key to highlight Yes, and press **Enter**. (Skip ahead to step 10.)
7. If this is a new installation, you will be asked to accept the End User License Agreement. After reading the agreement, press the **Tab** key to select **Ok**, then the **Enter** key to accept it.
 8. You will then be asked to accept the agreement in a separate prompt. Use the **Left Arrow** or the **Tab**

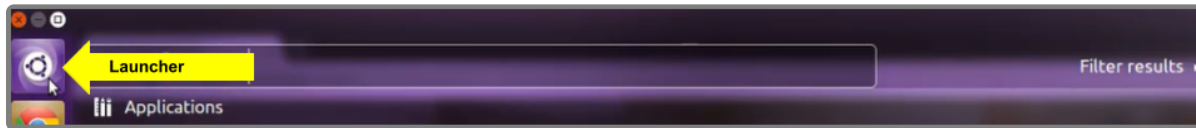
key to select Yes, and press **Enter** to accept it.

9. Next, the installer will ask you to set the Web Server Port, Admin Password, and the Archive Directory for storage.
 - By default, the web server port is set to port 80 (which is the recommended port for most installations). If Orchid Core VMS needs to use a different port, update the port then press the **Tab** key to select **Ok**, and press **Enter**.
 - Enter the password you would like to set for the default admin account, then press the **Tab** key to select **Ok**, and press **Enter**.
 - Set the directory for video archives. The default folder is `/archives`. Enter a new archives location, if needed, then press the **Tab** key to select **Ok**, and press **Enter**.
10. The installation will complete automatically without any additional prompts. This process may take a few minutes (and perhaps longer if the optimization process was selected). The Orchid Core VMS services start automatically once the package installation is done, after which you can access the Orchid Core VMS user interface in your web browser. (Please refer to the *Sign in* topic in the [Orchid Core VMS Administrator Guide](#) for more details.)
11. You can automatically launch a browser to Orchid Core VMS using the menu link installed on your server:
 - a. Click on the **Launcher** icon in the top left corner of the screen.
 - b. Type **Orchid** in the search box, then click the **Orchid VMS** icon listed under Applications.

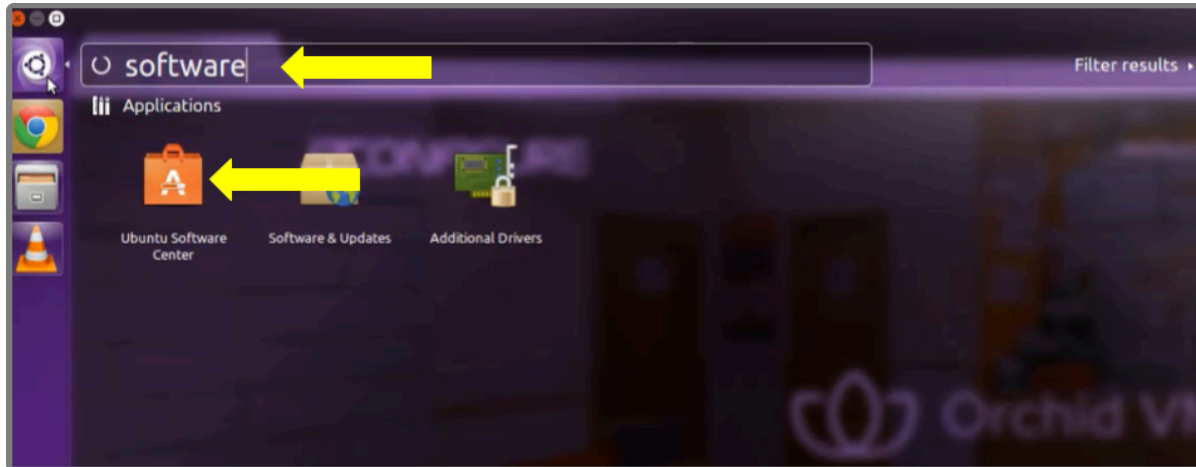


Installing through the GUI (Ubuntu Desktop)

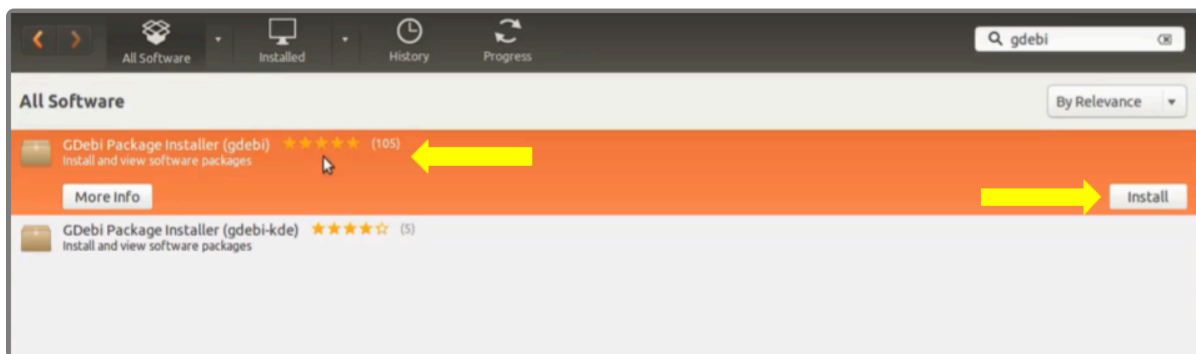
1. Click on the **Launcher** icon and then type in **Software Center**.



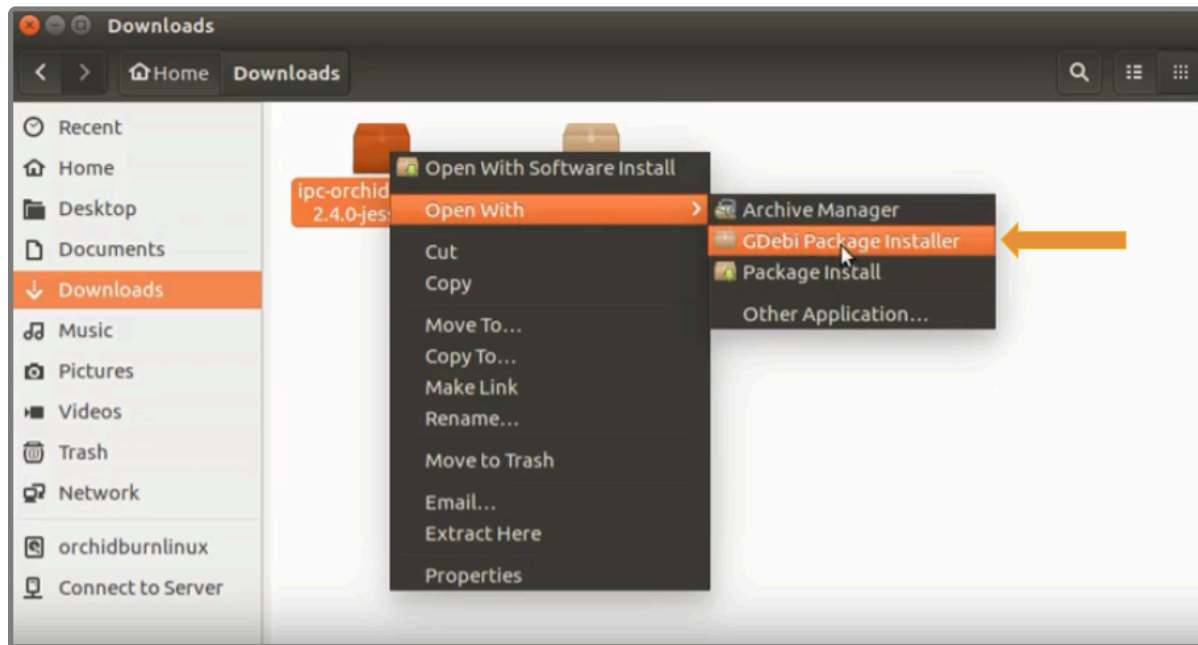
2. Click the **Ubuntu Software Center** icon to open it.



3. In the search bar in the top right-hand corner of the Software Center, type **gdebi**.
4. Select **GDebi Package Installer (gdebi)** (which should be the first result), and then click the **Install** button.



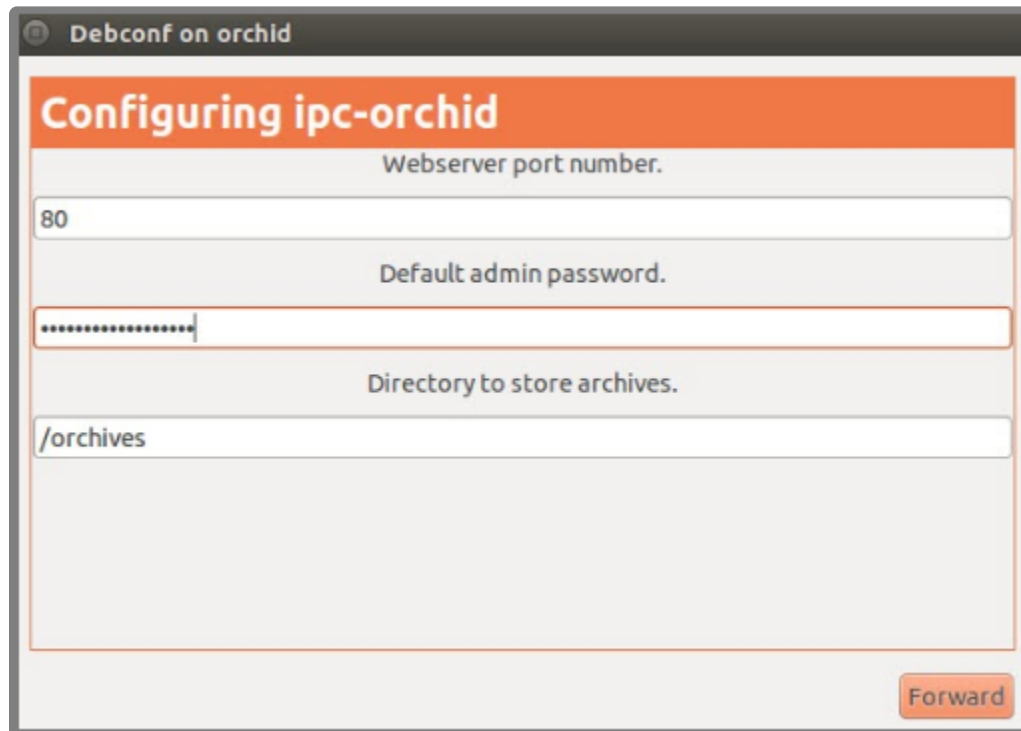
5. After GDebi has finished installing, click the **Files** icon to open the *Files Explorer*, then navigate to the folder storing your Orchid Core VMS package (.deb file). (The package is probably stored in the *Downloads* folder.)
6. Right-click on the Orchid Core VMS package, hover over *Open With* with the mouse, then select the **GDebi Package Installer** option.



7. Once the GDebi package installer loads, click the **Install Package** button in the top right-hand corner of the window.
8. You may be asked for your system password. Type it in, then click **OK**.
9. If this is a software upgrade, the next screen will give you the opportunity to optimize the database. Optimization is recommended (since it will improve the overall performance of the system, especially notable in larger systems with video archives greater than 40 TB). Be aware, however, that the optimization process may take a while to complete (and Orchid Core VMS will be unavailable during this time).



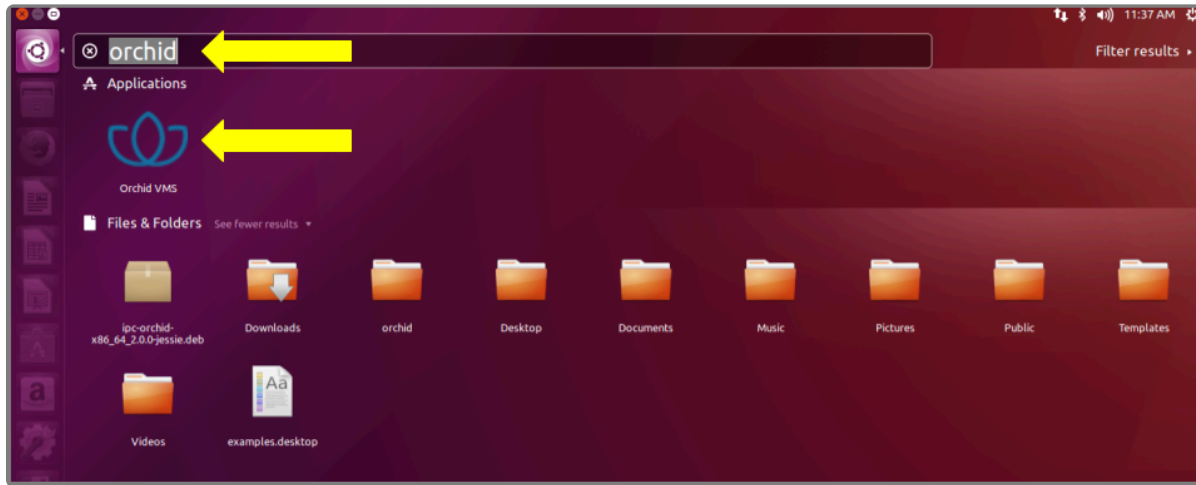
- To proceed with the optimization, mark the checkbox. (Skip ahead to step 12.)
10. If this is a new installation, you will be asked to accept the End User License Agreement. After you read the agreement, mark the *Do you accept the terms of agreement* checkbox and click the **Forward** button.
 11. Next, the installer will ask you to set the Web Server Port, default Admin Password, and the Archive Directory for storage.



- By default, the web server port is set to port 80, which is recommended for most installations. Update the port number only if Orchid Core VMS needs to use a port other than 80.
 - Enter the password you would like to set for the default admin account.
 - The default folder for video archives on Linux is `/orchives`. Enter a new archives location, if needed.
12. When finished, click the **Forward** button.

The installation will complete automatically without any additional prompts. This may take a few minutes.
 13. Once the package installer displays an "Installation Finished" message at the top of the screen, click the **Close** button to close the installer and complete the installation. The Orchid Core VMS services will start automatically once the package installation is done, after which you can access the Orchid Core VMS user interface in your web browser. (Please refer to the *Sign in* topic in the [Orchid Core VMS Administrator Guide](#) for more details.)
 14. You can automatically launch a browser to Orchid Core VMS using the menu link installed on your server:
 - a. Click on the **Launcher** icon in the top left corner of the screen.
 - b. Type **Orchid** in the search box, then click the Orchid VMS icon listed under *Applications*.





How to Edit a Configuration File in Ubuntu 16.04 to 20.04 (LTS versions)

Beginning with version 2.10, some of the configuration settings can be edited from within the Orchid Core VMS software. (This is done using the *Advanced Settings* feature which is explained in the [Orchid Core VMS Administrator Guide](#).) There are some settings, however, that will still need to be changed by editing the configuration file directly. These settings need to be protected from unauthorized changes because they are critical for program stability and reliability. These critical settings include the following:

• archives.dir	• streampipeline.bgseg.threshold
• database.type	• streampipeline.decode.keyFramesOnly
• logger.dir	• streampipeline.filesplit.motionMode
• orchid.admin.password	• streampipeline.filesplit.recordState
• orchid.uuid	• streampipeline.filesplit.timePeriod
• rtsp.protocol	• streampipeline.mode
• sqlite.filepath	• streampipeline.motionReducer
• streampipeline.bgseg.boxArea	• tls.certificate
• streampipeline.bgseg.dilate	• tls.key
• streampipeline.bgseg.postErode	• webserver.archives.rootpath
• streampipeline.bgseg.preErode	• webserver.html.rootpath
	• webserver.protocol

If it becomes necessary to change one of these critical settings, you can edit the Orchid Core VMS

configuration files using standard text editors in Linux. This section will describe two methods for editing the configuration files: using the [Command Line](#) and using the [Graphical User Interface](#).

* In order to edit text files as the root user, you will need administrator access to the computer on which Orchid Core VMS is installed.

The default locations for Orchid Core VMS's configuration files in Linux are:

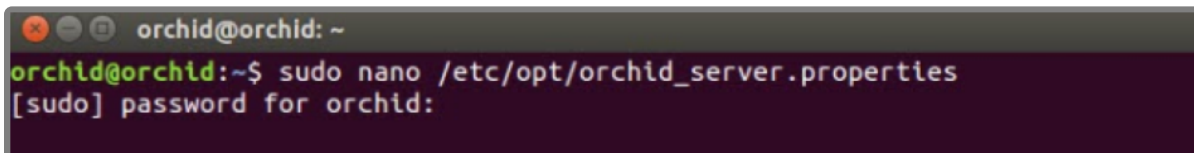
- **Orchid Server Properties:** `/etc/opt/orchid_server.properties`
 - Stores all of the Orchid Core VMS settings and can be used to update things like the port number, manually update the admin password, etc.
 - Settings entered in this file will override the default settings in the *Orchid Server Default Properties* file (described below).
- **Orchid Server Default Properties:** `/etc/opt/orchid_server.properties.default`
 - Stores all of the Orchid Core VMS default settings and may serve as a good reference. [Any changes made to this file will be ignored.]
- **Orchid ONVIF Auto-Discovery:** `/etc/opt/orchid_onvif_autodiscovery.properties`
 - Used to edit the default settings for the Orchid ONVIF auto-discovery service used by Orchid Core VMS.

Refer to the [Installation Support Topics](#) section for a complete list of available properties.

Editing Configuration Files Through the Command Line

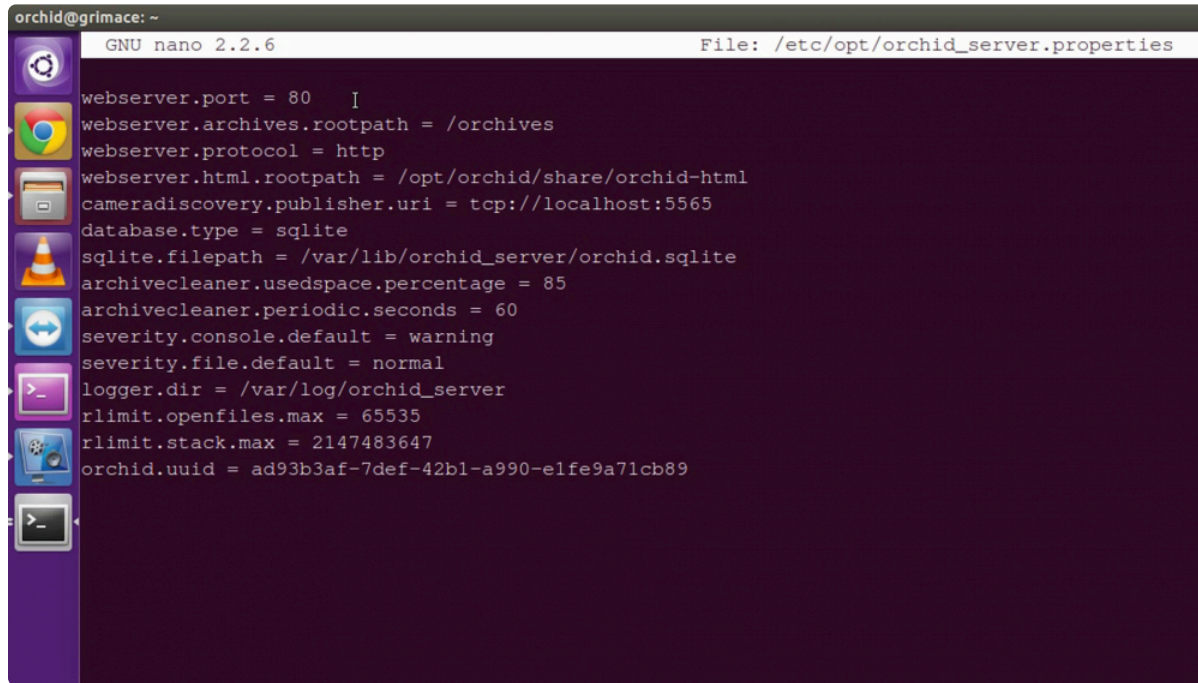
1. Open the *Terminal* program (**CTRL+ALT+T**) and open Orchid Core VMS's configuration file in the nano text editor by typing the following command: `sudo nano /etc/opt/orchid_server.properties`. Then press **Enter**.

* If a different file needs to be edited, such as the Orchid ONVIF auto-discovery configuration file, change the filename in the command above, as needed.



```
orchid@orchid: ~  
orchid@orchid:~$ sudo nano /etc/opt/orchid_server.properties  
[sudo] password for orchid:
```

2. After running that command, you will be prompted to enter the `[sudo]` password for your user. Type the password used to sign in to your computer, then press **Enter**. The configuration file will open.



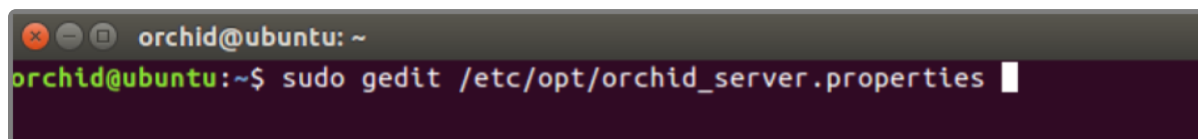
```
orchid@grlmace: ~  
GNU nano 2.2.6 File: /etc/opt/orchid_server.properties  
webserver.port = 80  
webserver.archives.rootpath = /orchives  
webserver.protocol = http  
webserver.html.rootpath = /opt/orchid/share/orchid-html  
cameradiscovery.publisher.uri = tcp://localhost:5565  
database.type = sqlite  
sqlite.filepath = /var/lib/orchid_server/orchid.sqlite  
archivecleaner.usedspace.percentage = 85  
archivecleaner.periodic.seconds = 60  
severity.console.default = warning  
severity.file.default = normal  
logger.dir = /var/log/orchid_server  
rlimit.openfiles.max = 65535  
rlimit.stack.max = 2147483647  
orchid.uuid = ad93b3af-7def-42b1-a990-e1fe9a71cb89
```

3. Use the arrow keys to move the cursor around the screen and update any default settings. You may also add new settings to the end of the file.
4. When you are ready to save the file, click **CTRL+X** on the keyboard, then type **Y** to save the file and close the text editor. If you do not want to save the file, type **N** (instead of Y) after typing **CTRL+X**.
5. Restart the Orchid Server service in Linux to implement the new settings.

Editing Configuration Files Through the GUI

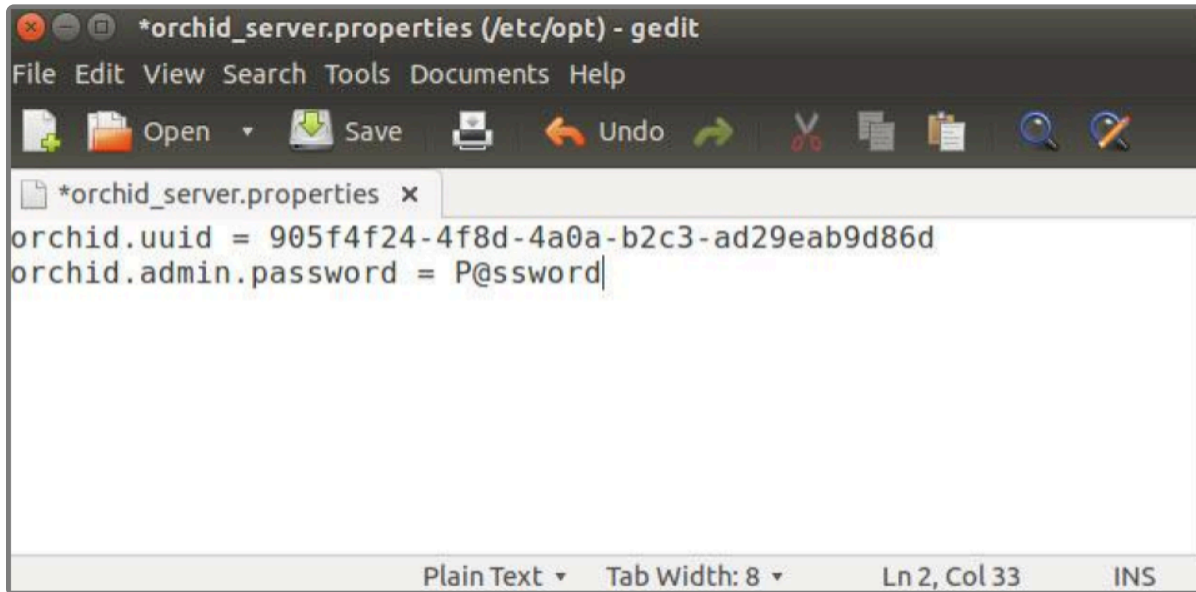
1. Open the *Terminal* program (**CTRL+ALT+T**) and open Orchid Core VMS's configuration file by typing the following command: **sudo gedit /etc/opt/orchid_server.properties**. Then press **Enter**.

* If a different file needs to be edited, such as the Orchid ONVIF auto-discovery configuration file, change the filename in the command above, as needed.



```
orchid@ubuntu: ~  
orchid@ubuntu:~$ sudo gedit /etc/opt/orchid_server.properties
```

2. After running that command, you will be prompted to enter your password to perform administrative tasks. Type the same password you use to sign in to your computer, then press **Enter**.
3. A text editor will open in a new window allowing you to edit the configuration file. Update default settings as needed. You may also add new settings to the end of the file.



4. When you are ready to save the file, click **File/Save** to save the configuration file.
5. You must restart the Orchid Server service in Linux to implement the new settings.

How to Manage Orchid Core VMS Services Through the Command Line

Orchid Core VMS runs on Linux as a service. If you need to check the status, start, or stop one of these services, you can do this using the appropriate command at the command line.

There are two main services used by Orchid Core VMS on Linux:

- **Orchid Server Service:** The main Orchid Core VMS service that records and archives video.
- **Orchid ONVIF Auto-Discovery Service:** Used by Orchid Core VMS to automatically find cameras that support ONVIF.

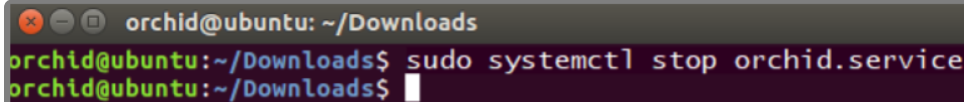
Tips

- After you've configured your Orchid Core VMS properties and started the services, you should check the status of both services to verify Orchid Core VMS is running.
- You will need to restart the services whenever a change has been made to the Orchid Core VMS configuration file.

To manage the Orchid Server service from the command line:

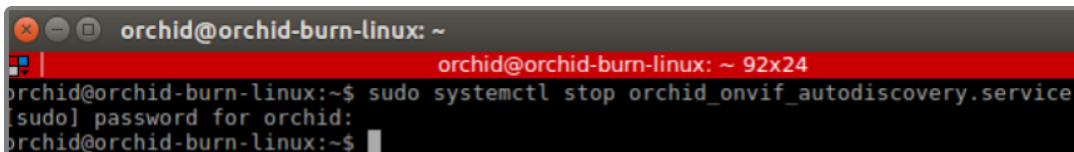
1. Open the *Terminal* program (**CTRL+ALT+T**).
2. Type the following command: **sudo systemctl (command) orchid.service** (where the **command** is

start, stop, restart, or status). Then press **Enter**.



```
orchid@ubuntu: ~/Downloads
orchid@ubuntu:~/Downloads$ sudo systemctl stop orchid.service
orchid@ubuntu:~/Downloads$
```

* This set of commands will only manage the Orchid Server service. If you need to manage the Orchid ONVIF Auto-Discovery Service, replace **orchid** with **orchid_onvif_autodiscovery** in the command line as in the example below.

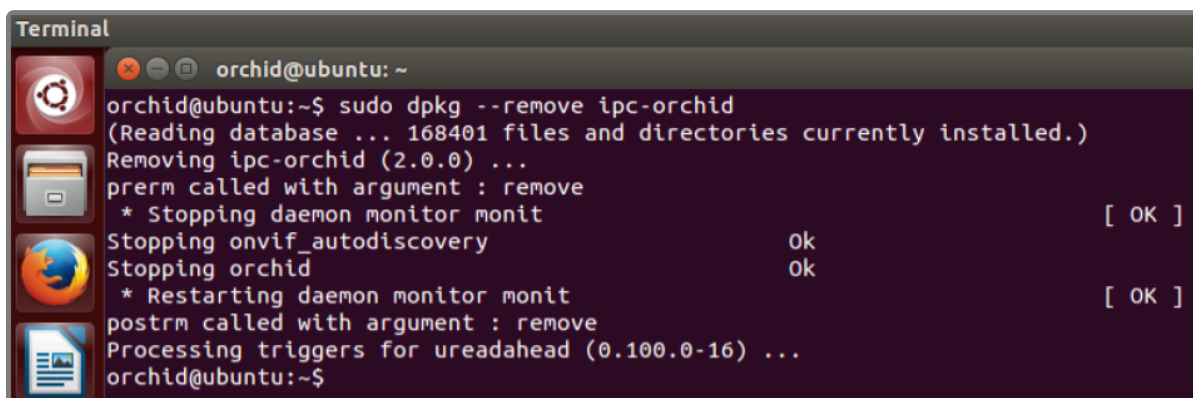


```
orchid@orchid-burn-linux: ~
orchid@orchid-burn-linux: ~ 92x24
orchid@orchid-burn-linux:~$ sudo systemctl stop orchid_onvif_autodiscovery.service
[sudo] password for orchid:
orchid@orchid-burn-linux:~$
```

Uninstalling Orchid Core VMS in Ubuntu 16.04 to 20.04 (LTS versions)

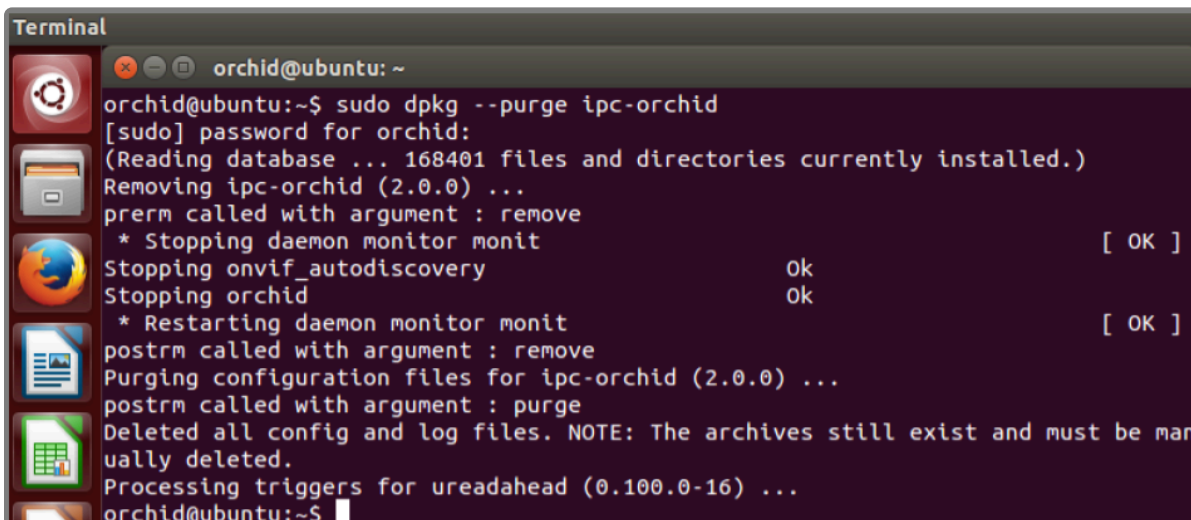
There are a couple of options for removing the Orchid Core VMS software. The *Remove* command will uninstall all files installed and created by Orchid Core VMS except the configuration files and the */orchives* directory. The *Purge* command will uninstall all files installed and created by Orchid Core VMS except the */orchives* directory.

1. Open the *Terminal* program (**CTRL+ALT+T**).
2. To uninstall Orchid Core VMS, do either of the following:
 - To uninstall Orchid Core VMS (while keeping the configuration files and the archives), enter the following command (then enter the password when prompted to do so): **sudo dpkg --remove ipc-orchid**



```
Terminal
orchid@ubuntu: ~
orchid@ubuntu:~$ sudo dpkg --remove ipc-orchid
(Reading database ... 168401 files and directories currently installed.)
Removing ipc-orchid (2.0.0) ...
prerm called with argument : remove
* Stopping daemon monitor monit [ OK ]
Stopping onvif_autodiscovery ok
Stopping orchid ok
* Restarting daemon monitor monit [ OK ]
postrm called with argument : remove
Processing triggers for ureadahead (0.100.0-16) ...
orchid@ubuntu:~$
```

- To uninstall Orchid Core VMS (keeping only the archives), enter the following command (then enter the password when prompted to do so): **sudo dpkg --purge ipc-orchid**

A terminal window titled "Terminal" with a dark background and light text. The prompt is "orchid@ubuntu: ~". The command "sudo dpkg --purge ipc-orchid" has been entered. The output shows the package being removed, including stopping services like "monit", "onvif_autodiscovery", and "orchid", and purging configuration files. A note states that archives still exist and must be manually deleted. The prompt returns to "orchid@ubuntu:~\$".

```
Terminal
orchid@ubuntu: ~
orchid@ubuntu:~$ sudo dpkg --purge ipc-orchid
[sudo] password for orchid:
(Reading database ... 168401 files and directories currently installed.)
Removing ipc-orchid (2.0.0) ...
prerm called with argument : remove
* Stopping daemon monitor monit [ OK ]
Stopping onvif_autodiscovery      ok
Stopping orchid                   ok
* Restarting daemon monitor monit [ OK ]
postrm called with argument : remove
Purging configuration files for ipc-orchid (2.0.0) ...
postrm called with argument : purge
Deleted all config and log files. NOTE: The archives still exist and must be manually deleted.
Processing triggers for ureadahead (0.100.0-16) ...
orchid@ubuntu:~$
```

Working in Red Hat

Installing Orchid Core VMS on Red Hat Enterprise Linux 7 and 8

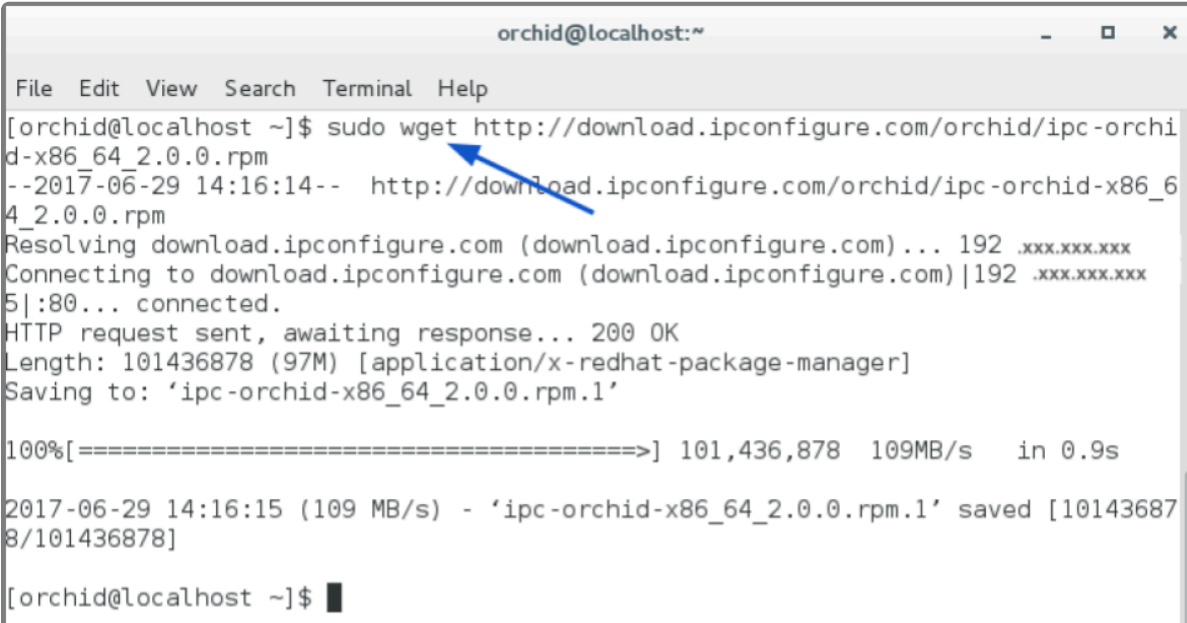
IPConfigure distributes Orchid Core VMS for Red Hat using an .rpm file. Use this file to install Orchid Core VMS on systems running Red Hat Enterprise Linux versions 7 and 8, and CentOS versions 7 and 8.

The following installation instructions provided for Red Hat Enterprise Linux 7 and 8 also apply to CentOS 7 and 8.

✿ Orchid Core VMS requires Linux kernel 3.17.0 or greater.

✿ You must sign in to the computer as a user with “root” access.

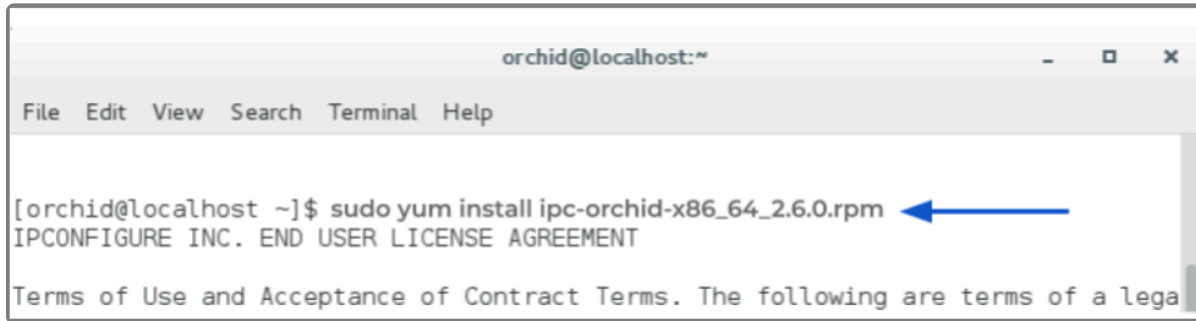
1. Download the Orchid Core VMS installation package (.rpm file) with a web browser, or from the command line by typing the following command: **sudo wget http://download.ipconfigure.com/orchid/ipc-orchid-x86_64_(VERSION).rpm**. Then press **Enter**.



```
orchid@localhost:~  
File Edit View Search Terminal Help  
[orchid@localhost ~]$ sudo wget http://download.ipconfigure.com/orchid/ipc-orchid-x86_64_2.0.0.rpm  
--2017-06-29 14:16:14-- http://download.ipconfigure.com/orchid/ipc-orchid-x86_64_2.0.0.rpm  
Resolving download.ipconfigure.com (download.ipconfigure.com)... 192.xxx.xxx.xxx  
Connecting to download.ipconfigure.com (download.ipconfigure.com)|192.xxx.xxx.xxx  
5|:80... connected.  
HTTP request sent, awaiting response... 200 OK  
Length: 101436878 (97M) [application/x-redhat-package-manager]  
Saving to: 'ipc-orchid-x86_64_2.0.0.rpm.1'  
  
100%[=====>] 101,436,878 109MB/s in 0.9s  
  
2017-06-29 14:16:15 (109 MB/s) - 'ipc-orchid-x86_64_2.0.0.rpm.1' saved [101436878/101436878]  
  
[orchid@localhost ~]$
```

2. Install some additional packages for Enterprise Linux by typing the following command: **sudo yum install epel-release**. Then press **Enter**.
3. Install Orchid Core VMS by typing the following command: **sudo yum install ipc-orchid-**

x86_64_(VERSION).rpm. Then press **Enter**.



This will install all necessary files for the Orchid Server service and Orchid ONVIF_autodiscovery service. By default, these programs will not be started.

4. Press the **Y** key to accept the EULA, or **N** to decline.
5. After the installation is complete:
 - a. You must set the **admin password** and the **archive directory**. (Refer to the next section for details.)
 - b. If this was an upgrade, you should consider optimizing the database. (For more details and instructions, refer to the [Optimize](#) section.)

How to Edit a Configuration File in Red Hat

Beginning with version 2.10, some of the configuration settings can be edited from within the Orchid Core VMS software. (This is done using the *Advanced Settings* feature which is explained in the [Orchid Core VMS Administrator Guide](#).) There are some settings, however, that will still need to be changed by editing the configuration file directly. These settings need to be protected from unauthorized changes because they are critical for program stability and reliability. These critical settings include the following:

• archives.dir	• streampipeline.bgseg.threshold
• database.type	• streampipeline.decode.keyFramesOnly
• logger.dir	• streampipeline.filesplit.motionMode
• orchid.admin.password	• streampipeline.filesplit.recordState
• orchid.uuid	• streampipeline.filesplit.timePeriod
• rtsp.protocol	• streampipeline.mode
• sqlite.filepath	• streampipeline.motionReducer
• streampipeline.bgseg.boxArea	• tls.certificate
• streampipeline.bgseg.dialate	• tls.key

• streampipeline.bgseg.postErode	• webserver.archives.rootpath
• streampipeline.bgseg.preErode	• webserver.html.rootpath
	• webserver.protocol

Immediately after installation, and if it becomes necessary to change one of these critical settings later, you can edit the Orchid Core VMS configuration files using your favorite text editor. (If you don't have a favorite, try nano.)



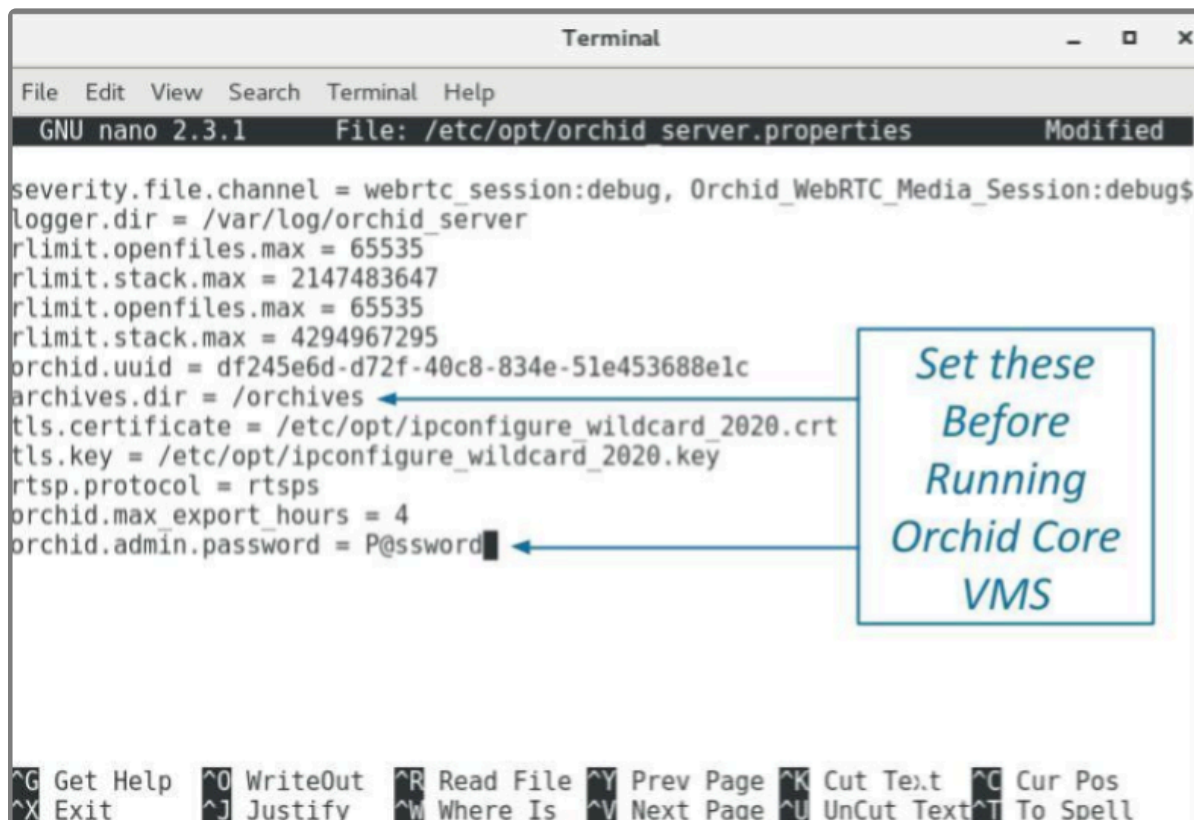
You must sign in to the computer as a user with “root” access.

The default locations for Orchid Core VMS's configuration files in Linux are:

- **Orchid Server Properties:** */etc/opt/orchid_server.properties*
 - Stores all of the Orchid Core VMS settings and can be used to update things like the Orchid Core VMS port number, manually update the admin password, etc.
 - Settings entered in this file will override the default settings in the *Orchid Server Default Properties* file (described below).
- **Orchid Server Default Properties:** */etc/opt/orchid_server.properties.default*
 - Stores all of the Orchid Core VMS default settings and may serve as a good reference. [Any changes made to this file will be ignored.]
- **Orchid ONVIF Auto-Discovery:** */etc/opt/orchid_onvif_autodiscovery.properties*
 - Used to edit the default settings for the Orchid ONVIF auto-discovery service used by Orchid Core VMS.

Refer to the [Installation Support Topics](#) section for a complete list of available properties.

1. Open the text editor, then type the following command: **nano /etc/opt/orchid_server.properties**. Then press **Enter**.



```
Terminal
File Edit View Search Terminal Help
GNU nano 2.3.1 File: /etc/opt/orchid_server.properties Modified
severity.file.channel = webrtc_session:debug, Orchid_WebRTC_Media_Session:debug$
logger.dir = /var/log/orchid_server
rlimit.openfiles.max = 65535
rlimit.stack.max = 2147483647
rlimit.openfiles.max = 65535
rlimit.stack.max = 4294967295
orchid.uuid = df245e6d-d72f-40c8-834e-51e453688e1c
archives.dir = /archives
tls.certificate = /etc/opt/ipconfigure_wildcard_2020.crt
tls.key = /etc/opt/ipconfigure_wildcard_2020.key
rtsp.protocol = rtsp
orchid.max_export_hours = 4
orchid.admin.password = P@ssword
^G Get Help ^O WriteOut ^R Read File ^Y Prev Page ^K Cut Text ^C Cur Pos
^X Exit ^J Justify ^W Where Is ^V Next Page ^U UnCut Text ^T To Spell
```

- Set the two parameters below. They take effect only when Orchid Core VMS is started for the first time [typically meaning that the Orchid Core VMS database (at `/var/lib/orchid_server/orchid.sqlite`) does not exist when Orchid Core VMS starts].

orchid.admin.password

Sets the admin password used upon first signing in. After the first sign in, the admin password can be configured via the user interface.

archives.dir

Specifies the directory to which video files are saved. After the first sign in, this property can be changed by editing the configuration file.



You must set the administrator password and the archive directory **before** you start running Orchid Core VMS.

The following parameters may be changed at any time and take effect upon restarting Orchid Core VMS.

webserver.port

Controls the port on which the Orchid Core VMS user interface is accessed. The default port is 80, but if your RHEL system is running an HTTP server such as Apache or Nginx, you will likely need to change this value.

archivecleaner.usedspace.percentage

Controls the percentage of disk space Orchid Core VMS will use. Find it on the volume specified in *webserver.archives.rootpath*.

If, during the course of your modifications, the properties file becomes malformed, Orchid Core VMS may fail to start. If this happens, check the Orchid Core VMS logs (at */var/log/orchid_server/*) for error details.

3. After you edit the configuration file, you must enable and start the Orchid Core VMS services. (Refer to the next section for instructions.)

How to Manage the Orchid Core VMS Services in Red Hat

The two main services used by Orchid Core VMS are listed below. If you need to enable, check the status, start, or stop either service, you can do this from the command line.

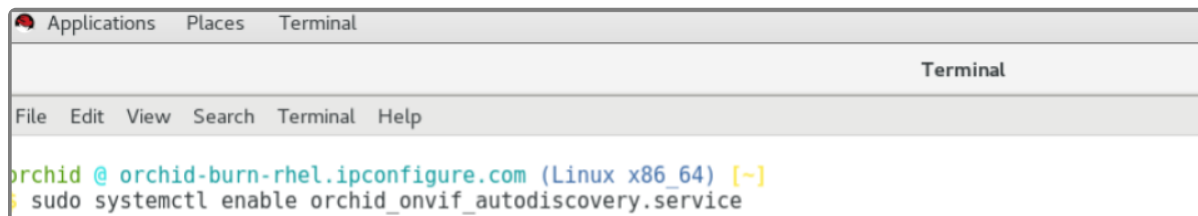
- **Orchid Server Service:** The main Orchid Core VMS service that records and archives video.
- **Orchid ONVIF Auto-Discovery Service:** Used by Orchid Core VMS to automatically find cameras that support ONVIF.

Tips

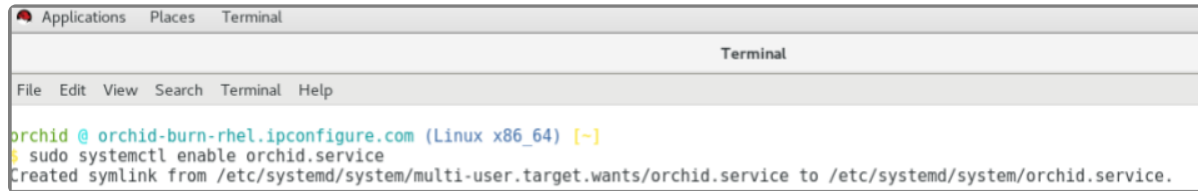
- In Red Hat, you have to enable the Orchid Core VMS services. This will allow the services to automatically start on bootup and restart in the case of failure.
- After you start the services, you should configure the firewall.
- After you've configured your Orchid Core VMS properties and started the services, you should check the status of both services to verify they are running.
- You will need to restart the services whenever a change has been made to the Orchid Core VMS configuration file.

To enable the Orchid Core VMS services:

1. Type each of the following two commands:
 - a. **sudo systemctl enable orchid_onvif_autodiscovery.service**. Press **Enter**.
 - b. **sudo systemctl enable orchid.service**. Press **Enter**.



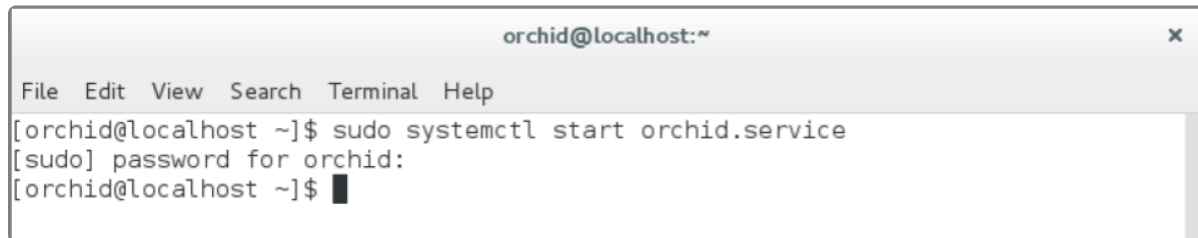
The screenshot shows a terminal window titled 'Terminal' with a menu bar (File, Edit, View, Search, Terminal, Help). The prompt is 'orchid @ orchid-burn-rhel.ipconfigure.com (Linux x86_64) [~]'. The command entered is 'sudo systemctl enable orchid_onvif_autodiscovery.service'.



```
Applications Places Terminal
Terminal
File Edit View Search Terminal Help
orchid @ orchid-burn-rhel.ipconfigure.com (Linux x86_64) [~]
$ sudo systemctl enable orchid.service
Created symlink from /etc/systemd/system/multi-user.target.wants/orchid.service to /etc/systemd/system/orchid.service.
```

To manage the Orchid Core VMS service:

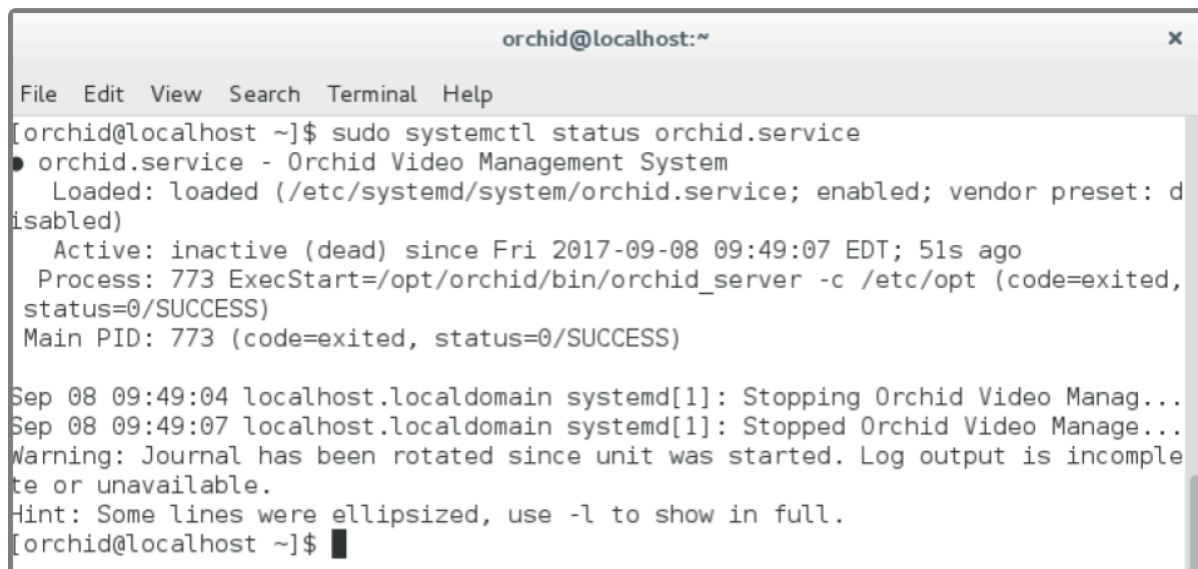
1. Type the following command: **sudo systemctl (command) orchid.service** (where the *command* is **start**, **stop**, or **status**). Press **Enter**.



```
orchid@localhost:~
File Edit View Search Terminal Help
[orchid@localhost ~]$ sudo systemctl start orchid.service
[sudo] password for orchid:
[orchid@localhost ~]$
```



```
orchid@localhost:~
File Edit View Search Terminal Help
[orchid@localhost ~]$ sudo systemctl stop orchid.service
[orchid@localhost ~]$
```

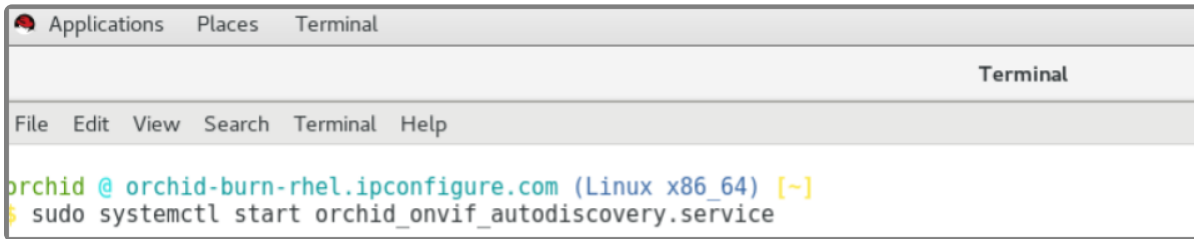


```
orchid@localhost:~
File Edit View Search Terminal Help
[orchid@localhost ~]$ sudo systemctl status orchid.service
● orchid.service - Orchid Video Management System
   Loaded: loaded (/etc/systemd/system/orchid.service; enabled; vendor preset: disabled)
   Active: inactive (dead) since Fri 2017-09-08 09:49:07 EDT; 51s ago
     Process: 773 ExecStart=/opt/orchid/bin/orchid_server -c /etc/opt (code=exited, status=0/SUCCESS)
    Main PID: 773 (code=exited, status=0/SUCCESS)

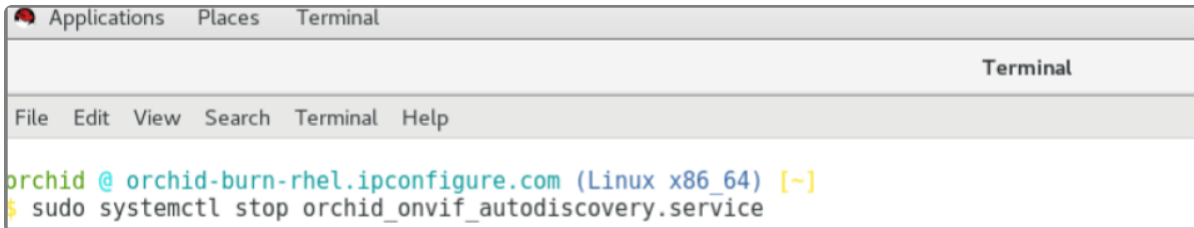
Sep 08 09:49:04 localhost.localdomain systemd[1]: Stopping Orchid Video Manag...
Sep 08 09:49:07 localhost.localdomain systemd[1]: Stopped Orchid Video Manage...
Warning: Journal has been rotated since unit was started. Log output is incomplete or unavailable.
Hint: Some lines were ellipsized, use -l to show in full.
[orchid@localhost ~]$
```

To manage the Orchid ONVIF Autodiscovery service:

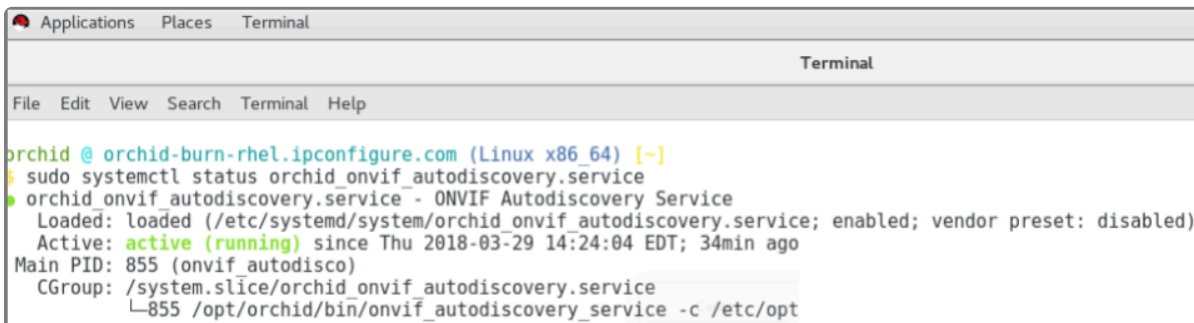
1. Type the following command: **sudo systemctl (command) orchid_onvif_autodiscovery.service** (where the *command* is **start**, **stop**, or **status**). Then press **Enter**.



```
Applications Places Terminal
Terminal
File Edit View Search Terminal Help
orchid @ orchid-burn-rhel.ipconfigure.com (Linux x86_64) [~]
$ sudo systemctl start orchid_onvif_autodiscovery.service
```



```
Applications Places Terminal
Terminal
File Edit View Search Terminal Help
orchid @ orchid-burn-rhel.ipconfigure.com (Linux x86_64) [~]
$ sudo systemctl stop orchid_onvif_autodiscovery.service
```



```
Applications Places Terminal
Terminal
File Edit View Search Terminal Help
orchid @ orchid-burn-rhel.ipconfigure.com (Linux x86_64) [~]
$ sudo systemctl status orchid_onvif_autodiscovery.service
● orchid_onvif_autodiscovery.service - ONVIF Autodiscovery Service
   Loaded: loaded (/etc/systemd/system/orchid_onvif_autodiscovery.service; enabled; vendor preset: disabled)
   Active: active (running) since Thu 2018-03-29 14:24:04 EDT; 34min ago
 Main PID: 855 (onvif_autodisco)
   CGroup: /system.slice/orchid_onvif_autodiscovery.service
           └─855 /opt/orchid/bin/onvif_autodiscovery_service -c /etc/opt
```

How to Optimize the Database in Red Hat

Although the Red Hat installer does not prompt users to optimize the database, optimization is recommended after a software upgrade. This process will improve the overall performance of the system, especially notable in larger systems with video archives greater than 40 TB.

Be aware that the optimization process may take a while to complete (and Orchid Core VMS will be unavailable during this time).

1. First stop the Orchid Core VMS server service. Type the following command: **sudo systemctl stop orchid.service**. Then press **Enter**.
2. To run the optimization, type the following command: **sudo /opt/orchid/bin/orchid_server —optimize-database**. Then press **Enter**.
3. When the optimization is complete, start the Orchid Core VMS service. Type the following command: **sudo systemctl start orchid.service**. Then press **Enter**.

Configure the Firewall

By default, the *firewalld* service will block access to Orchid Core VMS. Refer to the [Installation Support](#)

[Topics](#) section for a list of the ports used by Orchid Core VMS, and consult your RHEL 7 documentation for configuring *firewalld*. The following example will open default ports used by Orchid Core VMS, but you should understand the security implications of modifying your firewall settings before proceeding.

```
sudo firewall-cmd --zone=public --add-port=80/tcp --permanent
sudo firewall-cmd --zone=public --add-port=554/tcp --permanent
sudo firewall-cmd --zone=public --add-port=40000-50000/udp --permanent
sudo firewall-cmd --zone=public --add-port=5565/tcp --permanent
sudo firewall-cmd --reload
```

How to Sign in to Orchid Core VMS in Red Hat

Sign in to Orchid Core VMS using a web browser pointed to your server's IP address at the port specified above (default is 80). Unless changed during the configuration process, the default sign in credentials are *admin* and *password*.

Uninstalling the Orchid Core VMS Package in RedHat

1. To remove the Orchid Core VMS package, use the following command: **rpm -e ipc-orchid-(version).x86_64**.

(This will remove all files installed and created by Orchid Core VMS except the */archives* directory specified at **webserver.archives.rootpath** in the properties file.)

Installation Support Topics

The Orchid Core VMS configuration file contains settings that determine how Orchid Core will operate. Most of these settings don't need to be changed, but some of them may help you to customize the Orchid Core VMS system to better meet your needs. This section will provide an overview of the available configuration settings, instructions on how to change some of the most commonly edited settings, plus additional tips for working with Orchid Core VMS.

Orchid Core VMS Configuration Settings

Orchid Core VMS uses two properties files to configure the system: *orchid_server.properties* and *orchid_server.defaults.properties*. These files contain settings that don't change on a regular basis, and are reserved for those with administrator access. Both files can be used to configure all of the Orchid Core VMS properties, but the *orchid_server.properties* file has priority over the other file.

Beginning with version 2.10, some of the configuration settings can be edited from within the Orchid Core VMS software. (This is done using the *Advanced Settings* feature which is described in the [Orchid Core VMS Administrator Guide](#).) There are some settings, however, that will still need to be changed by editing the configuration file directly. These settings need to be protected from unauthorized changes because they are critical for program stability and reliability.

If you need to make a change to any of the protected configuration settings, please refer back to the instructions provided for your operating system.

Orchid Core VMS's configuration settings are listed below.



The settings displayed in **blue** are protected, and must be changed by editing the configuration file directly.

Web Server Settings

webserver.protocol

Possible values include *http* and *https*. (The *tls.key* and *tls.certificate* also need to be set. See [TLS Settings](#).)

webserver.port

Port number of the web server.

webserver.html.rootpath

Root path to the Orchid Core VMS HTML files.

webserver.maxthreads

Maximum number of threads used by the web server to handle requests. (Default: 16)

webserver.maxqueued

Maximum number of queued connections. (Default: 100)

webserver.sessions.user.max_age

Maximum age (seconds) of user session. (Default: 1 year)

webserver.sessions.remote.max_age

Maximum age (seconds) of remote session. (Default: 1 day)

webserver.ssl.ciphers

Enable/disable SSL/TLS ciphers (openssl cipher list [format](#))

Archive Properties

archives.dir

Full path for the desired storage location of media archives. This takes the place of the **webserver.archives.rootpath** setting from previous versions. Unlike the old property, this one can be changed after installation and properly updates the archives to link to the new storage directory. Anytime you change this property, a new *orchid-device.tag* file will be created and saved in the new storage directory.

WebRTC Properties

webrtc.stun.host

IP address of the STUN server. (Note: If the **host** is set, the **port** must also be set. STUN can be disabled by setting **host** to “None” and not specifying a port. If **host** is not set, the STUN server defaults to **stun.ipconfigure.com:3478**.)

webrtc.stun.port

Port of the STUN server.

webrtc.turn.host

IP address of the TURN server.

webrtc.turn.password

Password of the TURN server.

webrtc.turn.port

Port of the TURN server.

webrtc.turn.type

Relay type of the TURN server.

webrtc.turn.username

Username of the TURN server.

RTSP Server Settings

rtsp.protocol

Protocol of the RTSP server. Note that the RTSP server transport (UDP/TCP/HTTP) is dynamically chosen by the client, while the encryption RTSP v. RTSPS is set by the server.

- **rtsp**
Default – Orchid Core VMS UI will access the streams via UDP.
- **rtspt**
Orchid Core VMS UI will access the streams via TCP-interleaved.
- **rtspS**
Orchid Core VMS UI will access the streams via UDP SRTP.
- **rtspst**
Orchid Core VMS UI will access the streams via TCP-interleaved TLS.

rtsp.service

Configure RTSP server to accept connections on the given service. This should be a string containing the service name or a string containing a port number between 1 and 65535. When service is set to **0**, the server will listen on a random free port.

rtsp.session_cleanup_period

Number of seconds between checking to cleanup inactive sessions.

rtsp.server_backlog

The maximum amount of queued requests for the server.

rtsp.max_threads

The maximum threads used by the pool to handle client requests. A value of **0** will use the pool mainloop; a value of **-1** will use an unlimited number of threads.

rtsp.max_sessions

The maximum allowed number of sessions. A value of **0** means there is an unlimited number of sessions.

rtsp.rtp_port_range.min

Sets the minimum RTP port range.

rtsp.rtp_port_range.max

Sets the maximum RTP port range.

capture.latency

Sets the maximum allowed latency/delay in milliseconds of an RTSP stream coming in to Orchid. A setting of **100** ms (the default) means that any media frames received by Orchid that are older than **100** ms will be ignored. (Increasing this setting may be useful when recording from cameras that are not on the same local network as the Orchid Core VMS server.)

TLS Settings

tls.certificate

Full path to the PEM encoded TLS certificate file. This can include a chain of certificates.

tls.key

Full path to the PEM encoded TLS key file.

Camera Discovery Settings

cameradiscovery.publisher.uri

URI to the auto-discovery service. This allows you to connect to another ONVIF Auto-discovery service on another subnet. Usually this is set to **tcp://127.0.0.1:5565**.

Database Settings

sqlite.filepath

Full path (with filename) for the desired location of the sqlite database file.

sqlite.wal

To enable sqlite WAL mode, set to **true**. (Default: **true**.)

sqlite.busy.timeout

Set the sqlite PRAGMA busy_timeout (milliseconds).

sqlite.optimize.interval

Sets the interval (in minutes) at which the database will be optimized. A value of 0 or less disables periodic optimization. (Default: 60 minutes)

database.timeout.seconds

Database write lock timeout (seconds).

database.type

Database type to be configured by ODB.

Orchid Core VMS Server Settings

orchid.admin.password

Orchid Core VMS default administrator user password.

orchid.uuid

Server ID. Changing this value will disassociate all currently saved Orchid Core VMS settings and video archives with the Orchid Core VMS server.

orchid.max_player_count

Maximum number of allowed Players on the *Stage* per client.

orchid.max_export_hours

Maximum number of hours allowed for video export. (Default: 1 hour.)

clockwatcher.skew.threshold.seconds

The maximum amount of time (in seconds) the clock is allowed to skew before the Orchid Core VMS server is shut down.

RLIMIT/ULIMIT/Limits.conf (Linux Only) Settings

rlimit.core.max

Maximum core size. Equivalent to **ulimit -c. -1** for unlimited.

rlimit.openfiles.max

Maximum number of open files. Equivalent to **ulimit -n**.

rlimit.stack.max

Maximum stack size. Equivalent to **ulimit -s**.

Logging Settings

severity.file.default

File logging level. The Orchid Core VMS logging system uses the levels below to determine what information will be logged. These levels are listed in order of ascending severity (but descending detail). For example, if you set this to *trace*, the system will keep very detailed logging. If you set this to *critical*, the system will log fewer details, including only those events that are critical. (Keep in mind that increasing the amount of detail in the log file will reduce the total amount of time that the logs will cover.)

- **trace**
- **debug**
- **normal** – Recommended

- **notice**
- **warning**
- **error**
- **critical**

logger.dir

Log file location.

severity.console.default

Console logging level.

severity.syslog.default

Syslog logging level.

severity.console.channel

Console channel log levels (ie. **Gst_Logger:trace, filesplit:debug**)

severity.file.channel

File channel log levels.

severity.syslog.channel

Syslog channel log levels.

gst.debug

Gstreamer Debugging levels (ie. **rtspclient:5, filesrc:3**).

logs.file_size

Maximum size of a single log file in MB.

logs.split_time

Maximum duration of a single log file in minutes.

logs.total_size

Maximum size of all log files (in MB) until cleanup occurs.

syslog.address

Hostname of syslog server.

syslog.port

Port of syslog server.

Archive Cleaner Settings

archivecleaner.usedspace.percentage

Maximum disk usage percentage before the archive cleaner will start deleting archives.

archivecleaner.delete.percentage

Percentage of additional space to delete when overflow detected.

archivecleaner.periodic.seconds

Archive cleaner check period in seconds.

Low-bandwidth Playback Settings

playback.maxpipelines

Maximum number of allowed playback pipelines. (Default: **16**)

framepuller.timeout

Number of seconds to wait before closing playback pipeline if no additional frames are requested. (Default: **10**)

framepuller.threadpool.count

Number of threads for handling playback pipeline construction. (Default: **12**)

framepuller.threadpool.maxtasks

Maximum number of playback pipeline construction requests before dropping new requests. (Default: **1024**)

framepuller.websocket.base64simd

Overrides the default SIMD instructions for encoding JPEG frames to base64. (Note: If the platform does not support the SIMD instruction set specified, low bandwidth mode will not work and may crash the Orchid Core VMS server.)

Video Archive Writer Settings

filewriter.max.finalize.duration

Sets the maximum duration in milliseconds for the file writer to finalize a file before abandoning the file and entering failover mode. (Default: **500**)

filewriter.max.op.duration

Set the maximum duration in milliseconds that an individual file operation is permitted to take. (Default: **30000**)

filewriter.max.threads

Maximum number of filewriter threads per stream. (Default: **2**)

Camera Stream Settings

The settings listed below should *never* need to be changed. Changes should only be performed by those with highly advanced knowledge of the software.

streampipeline.bgseg.boxArea

Minimum motion region size to report.

streampipeline.bgseg.dilate

Size of square structuring element for dilation.

streampipeline.bgseg.postErode

Size of square structuring element for second erosion.

streampipeline.bgseg.preErode

Size of square structuring element for first erosion.

streampipeline.bgseg.threshold

Minimum threshold in difference image to classify motion.

streampipeline.decode.keyFramesOnly

For H264 streams, set whether to decode all frames or key frames only. Note this affects motion detection and low-bandwidth live view.

streampipeline.filesplit.motionMode

Set the motion mode of the filesplit element.

streampipeline.filesplit.recordState

Set the record state of the filesplit element.

streampipeline.filesplit.timePeriod

Set the split time of the archived files (in seconds).

streampipeline.mode

Default stream pipeline mode.

streampipeline.motionReducer

Enable h264reducer. This will only take effect if the stream is H264 and motion detection is enabled. This will install an h264drop element before filesaver and detect motion events (on the gstreamer bus) to enable and disable the dropper. Motion will record at the full framerate, while non-Motion will drop non-keyframes.

Orchid Core VMS Firewall/Ports Configuration

This topic describes all of the network ports used by Orchid Core VMS and which configuration properties allow you to change each port.

Required External Ports

This port is *required* to access Orchid Core VMS in any configuration.

- Web server TCP port
 - Default: 80
 - Configuration property: **webserver.port** (number between 1 and 65535)

Optional External Ports

Orchid Core VMS's RTSP server ports may be configured with the optional parameters below. The RTSP server is not used by the Orchid Core VMS or Orchid Fusion VMS user interfaces, but may be used by certain third-party integrations or other applications.

- RTSP TCP port
 - Default: 554
 - Configuration property: **rtsp.service** (number between 1 and 65535)
- RTP UDP port range
 - Default: None (chosen dynamically; if manually specified, 40000 – 50000 is recommended)
 - Configuration properties: **rtsp.rtp_port_range.min** and **rtsp.rtp_port_range.max** (numbers between 1 and 65535)

Optional Internal Ports

If a software firewall is running directly on your Orchid Core VMS server itself, the following port needs to be open (for localhost) for Orchid Core VMS to communicate with its Orchid ONVIF Auto-Discovery Service.

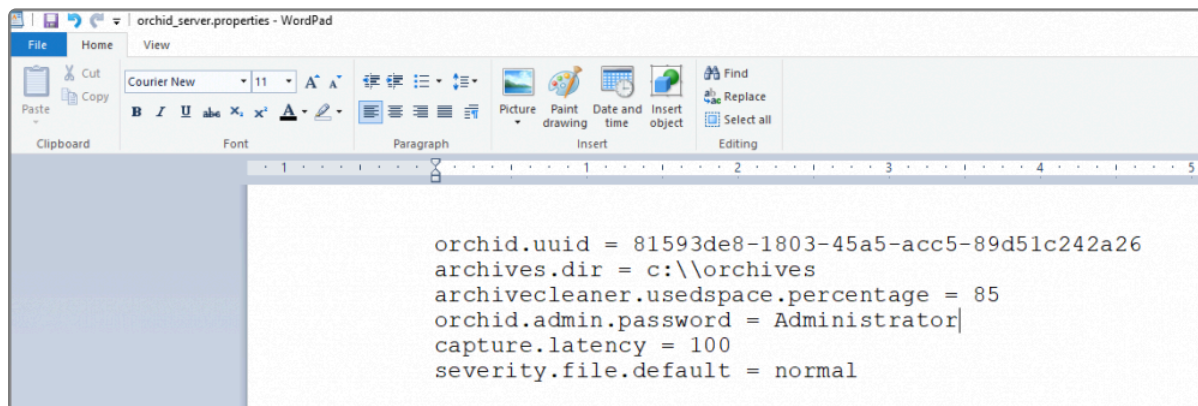
- Orchid ONVIF Auto-Discovery URI
 - Default: tcp://127.0.0.1:5565
 - Orchid Core VMS Configuration Property: **cameradiscovery.publisher.uri** (a full URI string, as above)
- Orchid ONVIF Auto-Discovery Server Port (configured in autodiscovery.properties)
 - Default: 5565
 - Orchid ONVIF Auto-Discovery Configuration Property: **port** (number between 1 and 65535)

Changing the Orchid Core VMS Administrator Password

You may change the password for the default Administrator account any time after installation. You can do this in Orchid Core VMS through the *Users* menu (as described in the [Orchid Core VMS Administrator Guide](#)), or you can change it by modifying the Orchid Core VMS properties file (as described below).

✿ In order to perform this change, you need to be signed in as an Administrator.

1. Open the Orchid Core VMS properties file. (If you need extra help, refer back to the *How to Edit a Configuration File* section that corresponds to the operating system you are using.)
2. Change the **orchid.admin.password** property to implement a new setting.



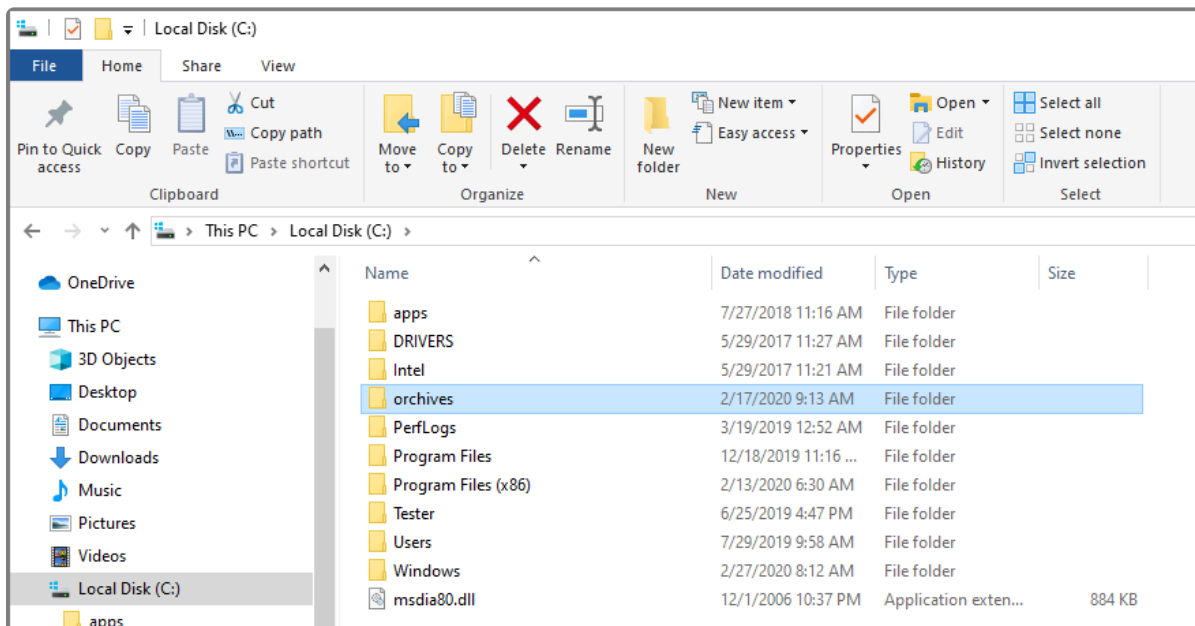
3. Save and close the file.
4. After you update the Orchid Core VMS properties file, you must restart the Orchid Core VMS services. (If you need extra help, refer back to the *How to Manage the Orchid Core VMS Services* section that corresponds to the operating system you are using.)
5. Once the restart is complete, you can sign into Orchid Core VMS.

Changing the Orchid Core VMS Archives Storage Location

If, some time after installation, you need to move the Orchid Core VMS archives to a new location, please follow the procedure below.

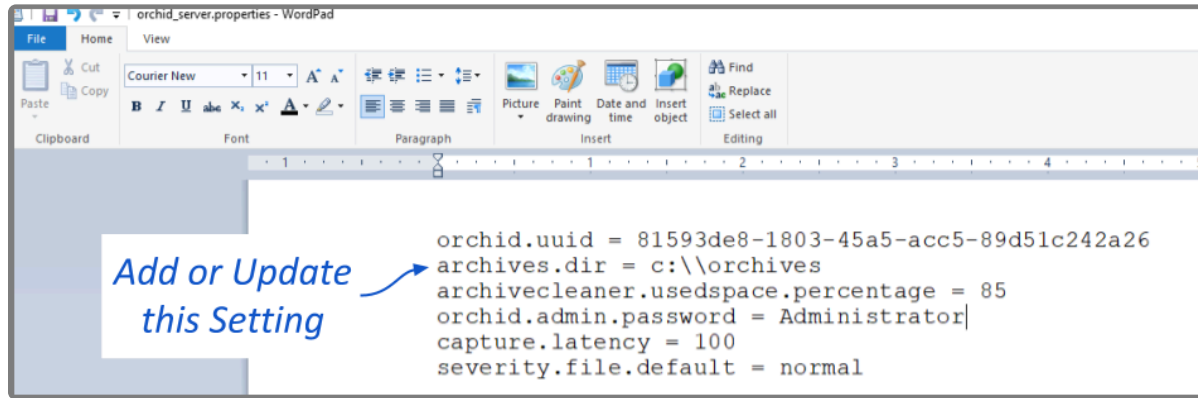
✿ In order to perform this change, you will need to be signed in as an Administrator.

1. Sign out of the Orchid Core VMS application, and then stop both of the associated services (Orchid Core VMS Server service, and Orchid Core VMS ONVIF Autodiscovery service). (If you need extra help, refer back to the *How to Manage the Orchid Core VMS Services* section that corresponds to the operating system you are using.)
2. Move all of your archive files (including the parent directory) from the old location to the new location. For example, in the image below, you would move the *archives* folder (and all of its contents) to a new location.



3. After you physically move the files, you'll need to update the Orchid Core VMS configuration file. Change the **archives.dir** property (shown in the image below) to reflect the new program storage location. (If you need extra help, refer back to the *How to Edit a Configuration File* section that corresponds to the operating system you are using.)

✿ Anytime you change this property, a new *orchid-device.tag* file will be created and saved in the new storage directory.



4. Save and close the file.
5. After you update the Orchid Core VMS configuration file, you can restart the Orchid Core VMS services. (If you need extra help, refer back to the *How to Manage the Orchid Core VMS Services* section that corresponds to the operating system you are using.)
6. Once the restart is complete, you can sign into Orchid Core VMS.

Changing the Orchid Core VMS Archives Retention Percentage

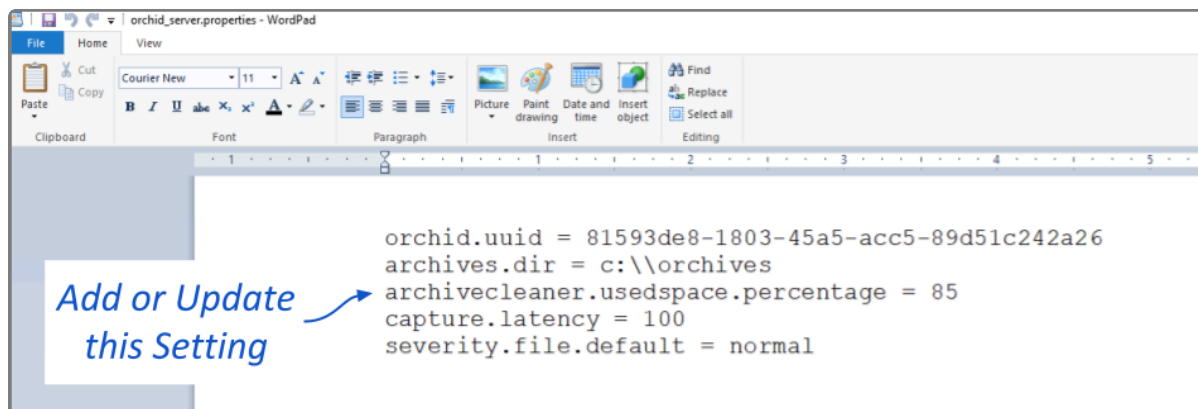
In an effort to maintain a certain amount of free space on the hard disk, Orchid Core VMS has a self-imposed limit for saving video archive files. Once this limit is reached, the system will begin to delete the oldest video archive files to make room for new ones.

The default setting for this limit is 85%, but you can change it using either of the following methods:

- You can use the *Advanced Settings* feature in the software (which is described in the [Orchid Core VMS Administrator Guide](#)).
- You can modify the Orchid Core VMS properties file (as described below).

✿ In order to perform this change, you will need to be signed in as an Administrator.

1. Open the Orchid Core VMS properties file. (If you need extra help, refer back to the *How to Edit a Configuration File* section that corresponds to the operating system you are using.)
2. Change the **archivecleaner.usedspace.percentage** property to implement a new setting.



3. Save and close the file.
4. After you update the Orchid Core VMS properties file, you must restart the Orchid Core VMS services. (If you need extra help, refer back to the *How to Manage the Orchid Core VMS Services* section that corresponds to the operating system you are using.)
5. Once the restart is complete, you can sign into Orchid Core VMS.

Enabling a STUN Server for WebRTC Mode

If your Orchid Core VMS server has access to the internet, it will use **stun.ipconfigure.com** as a STUN server by default, and no additional configuration will be required. If your Orchid Core VMS server is on a private network, or if you prefer to use a different STUN server, see the following instructions.

To set up the STUN server, first identify servers that you can use, then you'll need to set the **webrtc.stun.host** and **webrtc.stun.port** settings. You may use either of the following methods:

- You can use the *Advanced Settings* feature in the software (which is described in the [Orchid Core VMS Administrator Guide](#)).
- You can modify the Orchid Core VMS properties file (as described below).

For more details on these properties, please refer back to [Orchid Core VMS Configuration Settings](#).




In order to edit the configuration file, sign in as an Administrator.



For more details about Orchid Core VMS and WebRTC, please refer to the [Orchid Core VMS Administrator Guide](#).

1. Open the Orchid Core VMS properties file. (If you need help, refer back to the *How to Edit a Configuration File* section that corresponds to your operating system.)
2. To setup a STUN server, add the following properties to the configuration file:
 - a. `Webrtc.stun.host`
 - b. `Webrtc.stun.port`

```
orchid.uuid = 1a9d4b64-c3f6-4b1a-b47a-9c79c56e5465
webserver.port = 80
webserver.protocol = http
webserver.html.rootpath = C:\\Program Files\\IPConfigure\\orchid
\\share\\orchid-html
archives.dir = c:\\archives
cameradiscovery.publisher.uri = tcp://localhost:5565
database.type = sqlite
sqlite.filepath = orchid.sqlite
archivecleaner.usedspace.percentage = 85
archivecleaner.periodic.seconds = 60
severity.console.default = warning
severity.file.default = normal
rlimit.openfiles.max = 65535
rlimit.stack.max = 2147483647
rtsp.service = 8554
webrtc.stun.host = 209.85.232.127
webrtc.stun.port = 19302
```



*Properties Required for
Custom STUN Server*

3. When all changes are complete, save and close the file.
4. After you update the Orchid Core VMS properties file, you must restart the Orchid Core VMS services.
(If you need extra help, refer back to the *How to Manage the Orchid Core VMS Services* section that corresponds to the operating system you are using.)
5. Once the restart is complete, you can sign into Orchid Core VMS.

Linux Tips & Tricks

If you are using Orchid Core VMS with Linux, these tips will help you navigate the system so that you can perform tasks and find files faster.

Open a Terminal:

1. Access a Linux command line terminal to perform system administration tasks by pressing **Ctrl-Alt-T**.

Navigate the filesystem using a few simple commands:

pwd

Show the working (current) directory

ls

List the contents of the working directory

ls -lh —color

List detailed contents of the working directory

cd directory

Change to a new working directory

cd ..

Go up one directory

mv src dst

Move a file or directory

cp src dst

Copy a file

nano file

Edit a text file

sudo cmd

Run any command (editing a file, for example) as the superuser (root/Administrator).

sudo gedit

Open a graphical text editor with superuser permission



Commands, files, and directories can be auto-completed by tapping the **Tab** key—use it liberally, it makes things much easier!

Important Directories and Files

Important Directories and Files

Orchid Core VMS stores video, logs, configuration files, and a variety of other data in different directories. The default locations are as follows:

Directory/File	In Windows	In Linux
Installation directory	C:\Program Files\IPConfigure\orchid	/opt/orchid
Executable files	C:\Program Files\ IPConfigure\orchid\bin	/opt/orchid/bin
Library files	C:\Program Files\ IPConfigure\orchid\lib	/opt/orchid/lib
Video archive files	C:\orchives	/orchives
Log file	C:\Program Files\ IPConfigure\orchid\bin	/var/log/orchid_server
Database file	C:\Program Files\ IPConfigure\orchid\bin\ orchid.sqlite	/var/lib/orchid_server/ orchid.sqlite
Configuration file	C:\Program Files\ IPConfigure\orchid\bin\ orchid_server.properties	/etc/opt/ orchid_server. properties
Uninstall file	C:\Program Files\ IPConfigure\orchid\ uninstall.exe	N/A
Downloads (Exported video)	User's Downloads folder	~/Downloads



For additional help with Orchid Core VMS, please visit our training site at training.ipconfigure.com.