

Comic Collector for Windows

V19 — Last update: 20 April 2023

Collectorz.com

Table of Contents

Getting Started	5
Adding your first comics	6
Editing your comic entries	7
Customizing Comic Collector	8
Your Wish List.....	9
Adding.....	11
Adding Comics Automatically	12
Searching by Series.....	13
Searching by Barcode.....	14
Scanning barcodes with CLZ Scanner	15
Pull List.....	17
Daily Updates	19
Adding Comics Manually	20
Barcode Scanner	21
Webcam barcode scanning	22
Pre-fill Settings.....	23
Managing your Database	24
Edit Comic Entries	25
Edit Comic Screen	26
Editing Multiple Comics.....	27
Managing your Wish List	29
User Defined Fields	34
Maintenance	36
Update File Links	37
Add, Edit, Merge List Items	39
Re-assigning Index Numbers	41
Delete Orphaned Images	42
Find duplicate comics	43
Loan Manager.....	44
Multiple collections.....	48
Browsing.....	49
Searching.....	50
Quick Search	51
Filter	52
Sorting your collection.....	55
Grouping into Folders.....	59
Choosing Columns.....	61
Importing / Exporting	63

Import from Text / CSV	64
Full import via CLZ Cloud	65
Limited import.....	66
Export to Text / CSV	69
Creating a Backup	70
Printing a Simple List	71
Export to Excel.....	72
CLZ Cloud / Core	73
Synchronize with CLZ Cloud	74
Syncing your collection with CLZ Cloud	75
Uploading Images	76
How the CLZ Cloud works.....	77
Linking your comics for CLZ Cloud.....	78
Report / Submit to Core	80
CLZ Comics Mobile App.....	81
Sync with CLZ Cloud.....	82
Exporting with Wi-Fi / USB	83
CLZ Comics for iOS	84
CLZ Comics for Android	85
Subscriptions and Updates	86
Subscriptions	87
Unlocking the software.....	88
Updating your software	90
Troubleshooting	92
Connection problems	93
Export to CLZ Comics: “Device not found”	95
CLZ Cloud Sync problems.....	99
Different number of comics in desktop, cloud and app	100
Error: Database synced with different CLZ Account	101
Error: Cleared collection in CLZ Cloud	102
Error: Different database than the one in CLZ Cloud.....	103
Errors in Sync Report	104
SYNC FAILED: The old CLZ Cloud Sync system has been discontinued	106
Warnings and Error Messages	107
“Failed to open database. Your license key is already in use”.....	108
Error during installation / updating.....	109
MoveFile failed; code 183	110
System Error. Code: 2. The system cannot find the file specified	111
System Error. Code: 5. Access is denied	112
Cannot open file: jquery.code.v2.js” The system could not find the path specified.....	113

After updating I get “Call to OS Function Failed” or “Cannot Create...” error	114
Frequently Asked Questions	117
Your database and images.....	118
My series are not sorted correctly?	119
Some series are duplicated / split up?	121
Download from CLZ Cloud is disabled: “Upload New Fields First”	122
How do I transfer the program, my database and images to another computer?	123
Windows to Windows.....	124
macOS to macOS.....	126
macOS to Windows	129
I do not see my data any more.....	131
I do not see my images anymore.	134
Can I change the field value for multiple items in one go?.....	136
Move all userdata and images to a new location	137
License / Service Plan questions.....	138
How do I re-download the software for which I own a license?.....	139
Can I use 1 license on more than one computer?	140
How do I order as a gift?.....	141
Do you charge extra for credit card orders?	142
I am having problems ordering, please help?	143
I purchased the wrong software.	144
How can I get a refund?	145
Syncing with CLZ Cloud / Connect	146
Merge databases (before syncing).....	147
Core, Cloud and Connect explained.....	148
Which fields are synced?	150
I do not see my own cover images after syncing.	152

Getting Started

Thanks for checking out Comic Collector! To get started with Comic Collector you'll need to register for a free trial. There is no time limit with the trial desktop software, but you can only add a limited number of comics before the trial will automatically expire.

1. If you haven't already done so, [register for a free trial](#) on our website. A welcome mail will be sent to your email address which includes a download link.
2. Click the download link and save the installation file to your computer.
3. Locate the file on your computer, double click on the installation file and follow the steps in the installation process.
4. Here you can select the installation location for your Collectorz software. We recommend installing to the default location.
Tick the box if you'd like to create a desktop shortcut for quicker access to Comic Collector.
5. Click "Finish" to start Comic Collector

Now it's time to [add your first comics](#)

Adding your first comics

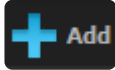
Adding Comics from CLZ Core

There are 2 ways you can add comics to your collection/wish list from CLZ Core:

1. [By typing the series title and selecting the issues you own](#)
2. [By typing/scanning barcodes](#)

All methods are located in the Add Comics from CLZ Core screen. In this Getting Started we will be covering how to use the “by series” tab in the “*Add Comics from CLZ Core*” screen.

Adding an issue by typing the series title:

1. To begin, open “*Add Comics from CLZ Core*”  and click the “*by Series*” tab.
2. Type the first few letters of the Series and select a result from the dropdown.
3. To add your selected comic use “*Add [issue]*” on the bottom right.

✿ You can also check the boxes in the list to select multiple issues to add in one go with the button bottom left.

Editing your comic entries

Here's how you can efficiently edit your comic entries, e.g. to add personal information, like purchase info, notes, your own ratings, etc..

Editing a single comic

All editing takes place in the "Edit Comic" screen, which you can open with the Edit button on the toolbar or by choosing Edit Comic from the Edit menu.

In this screen, you can find all the comic's properties, on multiple tab pages. Many of the comic details will already be filled in, provided by our online database. You can modify it all, to change or to complete the information.

However, the main reason to edit your comic entries, is to add information that is specific to you, e.g. when and where you purchased the comic, who in your household owns it, your personal notes or ratings, etc... The most important personal fields are in the "fixed" area at the bottom of the screen, the rest can be found on the tab page called "Personal".

After changing some fields, click the *OK* button to save the changes and return to the main screen of Comic Collector. If you're unhappy with the changes, click *Cancel*.

Editing Multiple comics

If you need to change the properties of many comics, e.g. to set the Owner field for all your comics, or to set the Purchase Date for all your recently added comics, you can use *Edit Multiple*

1. First of all, you need to make sure that the comics you want to edit are listed in the "list panel". Choose View > Folders > No Folders to have all your comics show up there.
2. Now select the ones you want to edit. You can use the standard Ctrl/CMD+click and Shift+click to select multiple comics.
3. From the menu, choose *Edit > Edit Multiple Comics*. This opens the Edit Multiple Comics screen, which is the same as the normal Edit Comic screen, but with all fields shown empty.
 - All values you enter here will be applied to all selected comics.
 - If you leave a box empty, that field will be left untouched for all selected comics.

When you're done making changes, click OK. That's it, you have changed multiple comics in your database in one go.

If you'd like to clear a field for all comics you're editing at the same time, click in the field and press F8.



It's possible to overwrite or wipe out a lot of data with a few button clicks, and once you click "OK" you can not undo this process.

Customizing Comic Collector

Tens of thousands of users are using Comic Collector and they all use it differently, with their own screen layout, sort settings and display styles.

Here's a quick overview of the customization settings the program offers:

Templates and Styles

Choose your own preferred look for the Details Panel. Right click the comic details panel in the bottom right of your screen, and select from multiple layouts, each in several colors and styles.

Screen Layout

Switch between multiple layouts and resize all panels.

Use View / Layout from the menu to choose your preferred layout, then drag the panel dividers to resize all sub-panels.

Column list, Cover Thumbnails or Cover Flow

Decide how you want to browse your comics, as a list with many data columns, as a wall of cover thumbnails or in the cool 3D Cover Flow. To switch, use the tabs (Windows) / buttons (Mac) above the panel.

Columns and Sort Order

For the List View, it is fully up to you which fields are visible as columns, and in which sort order (by title, by year, etc..) your comics will be listed. Both can be changed using the Columns and Sort Orders button above the list.

Font Style and Size

Click menu *View > Change Fonts* to change the screen font to a size and style that you are comfortable with.

Customize your toolbar

When you install Comic Collector, the toolbar contains buttons for the features most users use on a regular basis. But your usage of Comic Collector may differ, so you may want to add other buttons there, or remove some. You can do all that by right clicking the toolbar and choosing *Customize*. You can drag/drop icons to or away from the toolbar.

Your Wish List

Comic Collector can be a great help in keeping track of the comics you plan to buy or watch: your Wish List.

The “Collection Status” field

You control the status of a comic in your collection with the Collection Status field. Possible values for this field are “For Sale”, “On Order” and the most important ones: “In Collection” and “On Wish List”.

You can change the value of the Collection Status field in the Edit screen (at the bottom).

Add comics to your Wish List using the Quick Fill popup screen

Normally, when you add comics to your database, this field is automatically set to “In Collection”, indicating that you actually own the comic.

However, the Add Comics Automatically screen also lets you add comics to your wish list directly, using the Quick Fill popup screen.

1. Check the boxes for the issues you wish to add to your wish list in the Add Automatically screen.
2. Click “Add Checked”.
3. The Quick Fill popup should now show and you can change the collection status to “Wanted” there to add the items to your wish list.

The Quick Fill popup is enabled by default. Disable it by unchecking the “Always show this popup” checkbox at the bottom. If you accidentally disabled it you can re-enable it through the Settings Screen in your program under the Add/Update Comics Automatically setting.

Once you have some comics added to both your Collection and your Wish List,

On Windows:

You can use the Quick Filter panel to quickly switch between showing either your Collection, your Wish List or just everything. The Quick Filter panel is located top left, and opened with the blue button with the square and the arrow in it.

On macOS:

Use the tabs at the bottom left of the main screen to quickly switch between showing either your Collection, your Wish List or just everything.

Take your Collection and Wish List with you everywhere you go

You can access your Collection and Wish List on the go. To do this, we’ve created 2 solutions for you:

Free CLZ Cloud

Upload your database to your own free CLZ Cloud, then access your collection and wish list from any online device. PCs, Macs, tablets, smart phones, etc.

CLZ Cloud is completely free for you. Check out our [demo CLZ Cloud page](#) to see what it looks like.

CLZ Comics mobile app for iOS and Android

Transfer your collection database and wish list to the mobile app, then use it to browse and search both lists from wherever you are. You can access it from the app, without an internet connection. Check out some screenshots on our [CLZ Comics page](#). (requires separate purchase).

Adding

- [Adding Comics Automatically](#)

Adding Comics Automatically

Introduction

The *Add Comics from CLZ Core* screen is the fastest way to add comics to your database. It connects to our central CLZ Core database and add comics with detailed information to your own collection. You can search by Series title, by Barcode, add from your Pull List or check out our daily updates to add comics directly to your collection, or to your wish list.



<https://www.youtube.com/embed/PjZAG5JILto?rel=0>

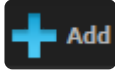
Contents

- [Searching by Series](#)
- [Searching by Barcode](#)
- [Pull List](#)
- [Daily Updates](#)

Searching by Series

You can search and add comics to your collection by typing in the series title of the issue(s) you're looking for. All issues of your series will show up for you to check and add to your collection/wish list.

Adding an issue by typing the series title:

1. To begin, open "Add Comics from CLZ Core"  and click the "by Series" tab.
2. Type the first few letters of the Series and select a result from the dropdown.
3. To add your selected comic use "Add [issue]" on the bottom right.

* You can also check the boxes in the list to select **multiple issues** to add in one go with the button on the bottom left.

* You can right click the results to sort them, or filter out the issues you already own.

Adding Trade Paperbacks:

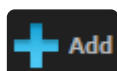
To add a trade paperback, first search the series title, then hold CTRL and highlight the issues you wish to add as a Trade Paper Back. Then right click on the selection and click "Add Selected Result(s) as TPB".

Searching by Barcode

You can search and add comics to your collection by barcode with the Add Comics from CLZ Core screen. Barcodes added to the queue will instantly show series title, issue number, issue extension, barcode and the cover image.

You can either search 1 barcode to add to your collection/wish list, or search multiple barcodes and add them all in one go.

Searching by Barcode



1. Open “Add Comics” and click the “by Barcode” tab.
2. Type/Scan the barcode into the barcode box.
3. Use “Search CLZ Core” to add the barcode to the add queue and instantly find your comic.
4. To add your comic use “Add [series issue]” on the bottom right.



You can type/scan **multiple barcodes** and search them. They will all be stored in the left hand panel for you to add in one go with the button bottom left.

Most of the time your barcode search will immediately give you 1 correct result which is selected for you. If you decide you want to add a different variant or issue, or the server is unable to directly select one, you can click the “dropdown” button in the list to expand the result and select a different result.

Delete a barcode

Accidentally scanned a barcode you decided you don’t want to add it? To delete a barcode you can either:

- Right click the results to delete selected entries.
- Hover your mouse over the cover image and click the small “Delete” icon.

Scanning barcodes

If you have a smartphone, tablet or webcam, you can use it to scan barcodes into the *Add Comics from CLZ Core screen* directly:

- If you have a smartphone or tablet, you can scan and enter barcodes with our **free** barcode scanning app [CLZ Barry](#).
- If you have a webcam, you can activate it using the top right hamburger menu.

Scanning barcodes with CLZ Scanner

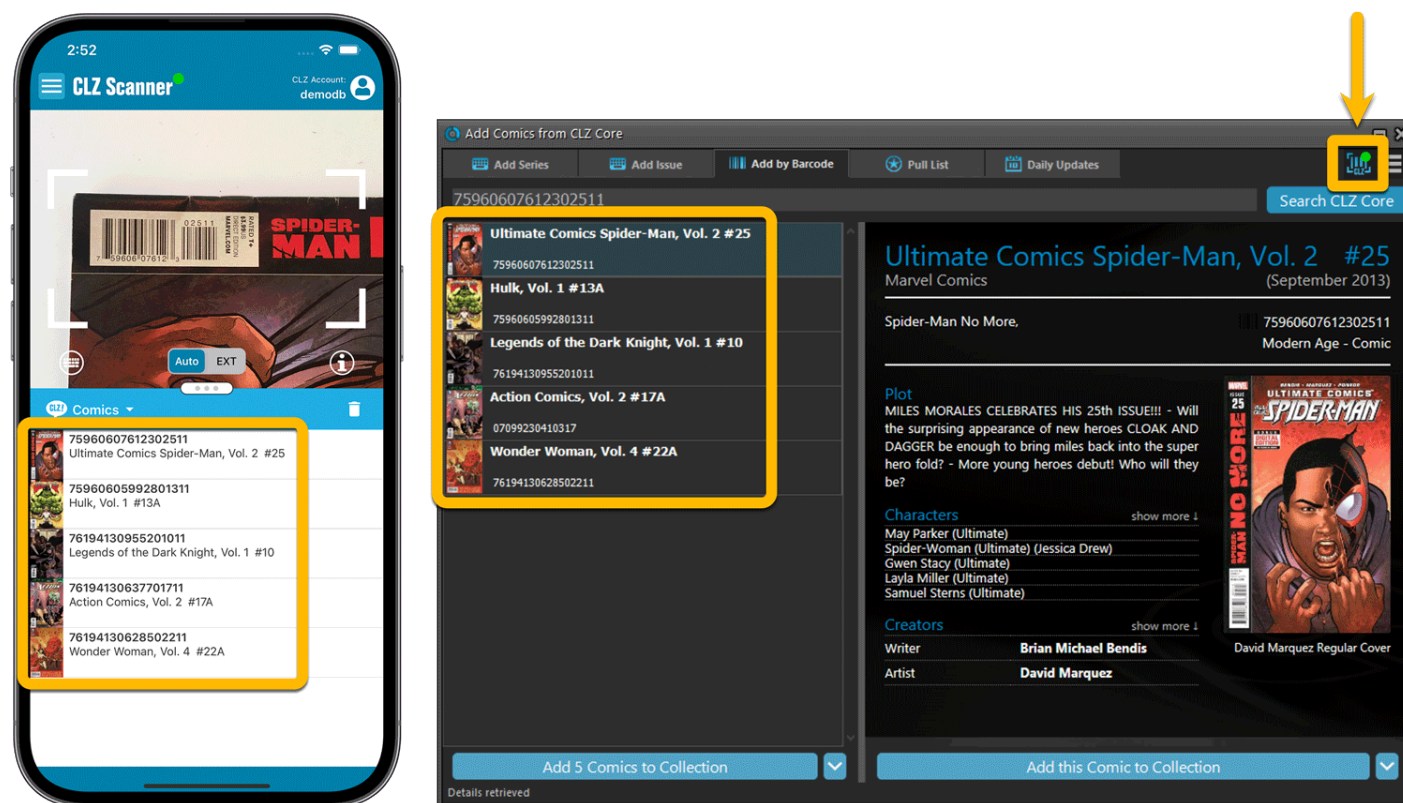
CLZ Scanner is a barcode scanner app. You can use it on your phone to scan barcodes and then instantly send those scanned barcodes to the Add Comics screen of the Comic Collector software running on your computer. From there, you can then easily and comfortably add the scanned comics to your computer software.

How to get started with the CLZ Scanner app:

Getting started with CLZ Scanner is super quick and easy. Here's how:

1. In Comic Collector, open the Add Comics screen and go to the Barcode tab.
2. Click the CLZ Scanner icon on the top right follow instructions to download the CLZ Scanner app **and** log in to the app.

When set up, just scan barcodes with the app and they will automatically appear in the Barcode queue of Comic Collector's Add Comics screen!



Using CLZ Scanner

Next time you want to use CLZ Scanner, you don't have to go through those steps again. CLZ Scanner can sync to your barcode queue even while you do not have Comic Collector open:

1. Scan barcodes with CLZ Scanner app.
2. Open the Add Comics screen in Comic Collector and the barcodes will automagically show up in your barcode queue!

You don't even have to be online with your phone while scanning. You can still scan to your app's queue while offline. The queue will then sync the first time you are online with the app again.

Or: you do have the Add Comics screen open while scanning and the scanned barcodes will instantly sync to your Barcode queue there. And when you add a comic, the barcode will be removed from your queue on both sides automatically.

Pull List

The Pull List tab shows you all issues of your pull list series that either have been released in the last 7 days or are going to be released in the upcoming months.

Add/Remove series to/from your Pull List

You can Add/Remove series to/from your Pull List by clicking the star icon top left on the series image.

1. Search a series title with the “by Series” tab.
2. Hover your mouse over the series image and click on the little star that appears in the top left corner of the image.
3. Click “Add to Pull List” (or remove from pull list)



<https://www.youtube.com/embed/nUwPZIdqb5M?rel=0>

Filter your Pull List

Click the “Pull List” tab. You can filter the Pull List to either show:

- New issues in your Pull List series (default).

- New issues in your series.
- New issues in all series.

 To show all comic issues of a serie, use “click here to show all comics” at the bottom.

Daily Updates

The Daily Updates tab is a list showing you which entries in our CLZ Core online comic database were recently updated by our content managers. It only shows issues from series you already have something added from in your local database.

The tab exists for users who like to see if their error reports have recently been processed.

Adding Comics Manually

Adding a comic is done with the [Add Comics Automatically](#) screen. Just let the program download all comic details and cover images from the Core for Comics online database.

If we do not have the comic you're looking for, you can choose to add your comic manually.

Adding comics manually

Click menu "*Edit > Add Comic Manually*" to begin.

This screen is just like the Edit Comic screen that you may already be familiar with. Only now all entry boxes are empty, ready for you to fill in. There are several different tabs with different Fields to fill out.

Click OK to save your new comic to your database.

Barcode Scanner

You can use our free CLZ Scanner barcode scanning app to scan barcodes and add comics to your database.

Find out how to [scan barcodes with CLZ Scanner](#).

Webcam barcode scanning

Use your webcam as a barcode scanner, to add or find comics by barcode.

To begin, click the menu icon top right, and click **Open Webcam Scanner**

- Scan barcodes with your webcam
Use the live camera view to point your webcam at the barcode and let our software detect the barcode that is in view.
- Use the webcam scanner to add comics by barcode
Pop-up the scan window and scan comics
- Or use it in the main screen to find comics by barcode
Scan a comic while in the main screen, to quickly search your local database by barcode.



The barcode scanning works best with auto-focus or manual-focus webcams. Fixed focus cameras will not work well (or at all).

Pre-fill Settings

The Pre-fill settings screen allows you to assign default values to pre-fill fields for comics when adding them to your collection.

For example, If you're adding lots of comics purchased from Amazon, you can define the **Purchase Store** using the Pre-fill settings. Each comic you add will then be assigned that store.

Setting Pre-fill fields

1. Go to “**Tools > Pre-fill Settings**”
2. Here you can define default values for comics you're going to add next.

You can click the Fields button to select which fields you want to pre-fill.

Managing your Database

- [Edit Movie Entries](#)
- [User Defined Fields](#)
- [Managing your Wish List](#)
- [Maintenance](#)
- [Loan Manager](#)
- [Multiple collections](#)

Edit Comic Entries

- [Edit Comic Screen](#)
- [Editing Multiple Comics](#)

Edit Comic Screen

All editing takes place in the “Edit Comic” screen, which you can open with the Edit button on the toolbar (blue pencil button) or by choosing Edit Comic from the Edit menu.



In this screen, you can find all the comic’s properties, on multiple tab pages. Many of the comic details will already be filled in, provided by our online database. You can modify it all, to change or to complete the information.

However, the main reason to edit your comic entries, is to add information that is specific to you, e.g. when and where you purchased the comic, who in your household owns it, your personal notes or ratings, etc...

Example of adding a “Storage Box” to one of your comics

1. Select the comic in your collection.
2. Click the blue pencil button in the toolbar (the edit button).
3. Bottom left of this tab you should spot the “Storage Box” field for you to enter the location in.
4. Click “OK” to save and close the comic entry



If you would like to edit the list of options you have in your “Storage Box” field, check out the [“Add, Edit Merge List Items”](#) topic.

After editing some fields, click the *OK* button to save the changes and return to the main screen of Comic Collector. If you’re unhappy with the changes, click *Cancel*.

Editing Multiple Comics

You can edit multiple comics in one go by using the Edit Multiple screen.

! Edit Multiple is the **only** feature in Comic Collector that **overwrites existing data**. Use it with great care.

Editing Multiple Comics

1. Select the comics you want to edit by checking the checkboxes or use CTRL / Shift + click.
2. Click the Edit button.
3. Use the **checkboxes** to indicate which field(s) you want to change.
4. Make your changes.

Edit Multiple Comics

Main | Creators & Characters | Covers | **Personal** | Plot & Notes

☒ **Owner**
James Master

☒ **Location**

Purchase / Value Info

☐ **Store** ☐ **Purchase Date** D M Y

☐ **Purchase Price** ☐ **Current Value**

☐ **Condition** ☐ **Rare**
☐ Yes ☐ No

☐ **Times Read** ☐ **Reading Date** D M Y

☒ **Read It**
☐ Yes ☒ No

Collection Status

Collection: ☐ In Collection ☐ For Sale ☐ Not In Collection

Wishlist: ☐ On Wish List ☐ On Order

Index 0

Quantity

Rating ★★★★★★★★★★

Last Modified: 13/12/2017 15:42:04

CLZ Comic ID: 0

OK Cancel



To clear a field for all selected comics, just click the checkbox and leave the entry box empty. The box will highlight in red to indicate the CLEAR action.

Edit all comics in one go

If you wish to set a value or clear all values for a particular field for all your comics follow these steps:

1. Choose *View > Folders > No Folders* to have all your comics show up in the Main List.
2. Click menu *Edit > Select All* to select all comics.
3. Click the Edit button.
4. Use the **checkboxes** to indicate which field(s) you want to change.
5. Make your changes.

Editing comics one by one without leaving the Edit screen

- Edit one comic,
- Use the *Next* or *Previous* button bottom left to edit the next or previous comic in your collection.

Managing your Wish List

Contents

- [Introduction](#)
- [Collection Status Filters](#)
- [Adding to your Wish List](#)
- [Controlling your Wish List](#)

Introduction

Comic Collector's Wish List allows you to keep track of comics you desire, but don't yet own. You can add comics directly to your wish list and quickly move them to your collection. You can quickly switch between your wish list and comics you already own using Comic Collector's Collection Status tabs at the bottom of the main screen. Sync your collection with CLZ Cloud to have your entire collection (including your wish list) viewable in your free CLZ Cloud or in your CLZ Comics iOS / Android app.

Collection Status Filters

You can control the Collection Status of comics within your database using the Collection Status radio buttons, found at the bottom of the Add/Edit Comic screen.

Edit Comic: Action Comics #891A - Part Two

Main | Creators & Characters | Covers | Personal | User Defined | Plot & Notes | Details/Contents | Links

Series: Action Comics | Issue No.: 891 | Issue Ext: A | Edition: | Crossover: | Story Arc: Black Ring

Title: Part Two | Title Sort: | Sub Title: | Publisher: DC Comics | Imprint: | Release Date: Y 2010 M 7 D 28 | Cover Date: Y 2010 M 9 D | Barcode: 76194120001989111 | Format: Comic | No. of Pages: 32 | Cover Price: 3.99 | Color: Color

Genre: ☒ Super-Heroes ☐ Action ☐ Adventure ☐ Comedy ☐ Crime ☐ Fantasy ☐ Horror ☐ Science Fiction ☐ Thriller ☐ War

Series Group: | Printed By: | Age: Modern | Country: USA | Language: English

Collection Status: ☒ In Collection ☐ For Sale ☐ Not In Collection | Wishlist: ☐ Wanted ☐ On Order

Index: 23 | Rating: 9 stars | Quantity: 1

Clz Comic ID: 248717

There are two main distinctions.

1. Collection
2. Wish List

Once you have some comics added to both your Collection and your Wish List,

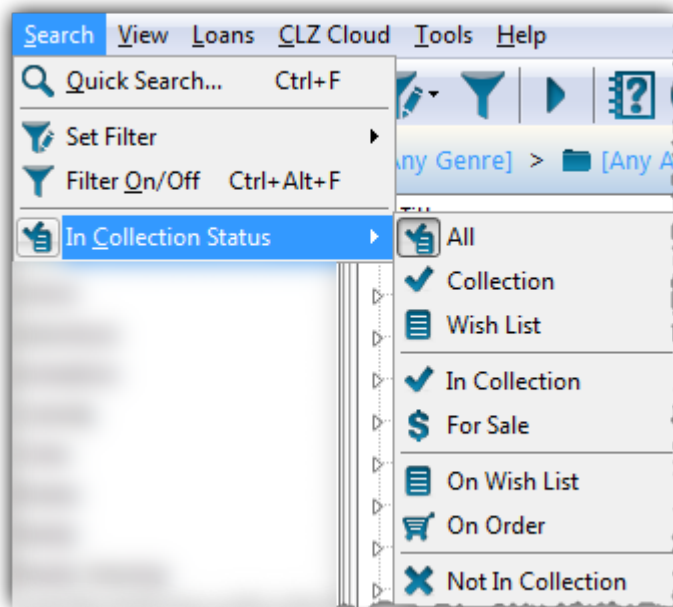
On Windows:

You can use the Quick Filter panel to quickly switch between showing either your Collection, your Wish List or just everything. The Quick Filter panel is located top left, and opened with the blue button with the square and the arrow in it.

On macOS:

Use the tabs at the bottom left of the main screen to quickly switch between showing either your Collection, your Wish List or just everything.

Alternatively, you can click menu *Search > In Collection Status* to view comics with a particular collection status.



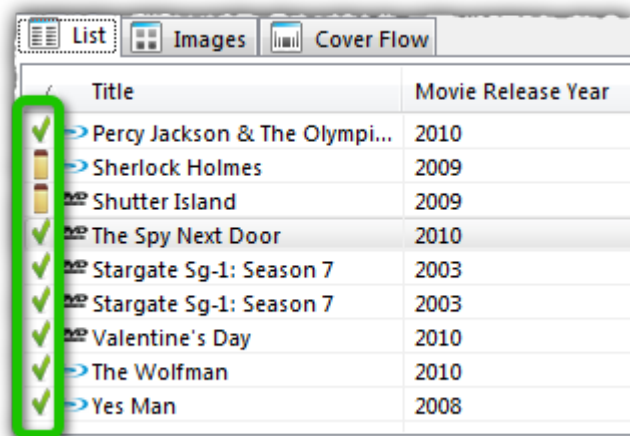
- [Back to Contents](#)

Adding to your Wish List

The easiest way to add comics to your Wish List is via the Add Comics Automatically screen. In the bottom right corner of the Add Automatically screen, you have two radio buttons. Use these to define whether a comic will be added to your collection or to your wish list.

When you add a comic to your collection and put it on your wish list, an icon will appear next to the comic in your Main List as well as in the Details Panel.

Main List:



Detail Template:



Shutter Island
 Paramount (2009)
 Crime, Mystery, Thriller

 **#16**

★★★★★☆☆☆☆☆

Seen It: Yes
 8714865505151  **8.0**

138 mins USA/English

Leonardo DiCaprio	<i>Teddy Daniels</i>	Director	Martin Scorsese
Mark Ruffalo	<i>Chuck Aule</i>	Producer	Laeta Kalogridis
Ben Kingsley	<i>Dr. Cawley</i>		Martin Scorsese
Max Von Sydow	<i>Dr. Naehring</i>	Writer	Laeta Kalogridis
Michelle Williams	<i>Dolores Chanal</i>		Dennis Lehane
Emily Mortimer	<i>Rachel 1</i>	Cinematography	Robert Richardson
Patricia Clarkson	<i>Rachel 2</i>		

These are known as Collection Status Indicators. You can enable/disable the indicators from appearing in the main list using Comic Collector's options.

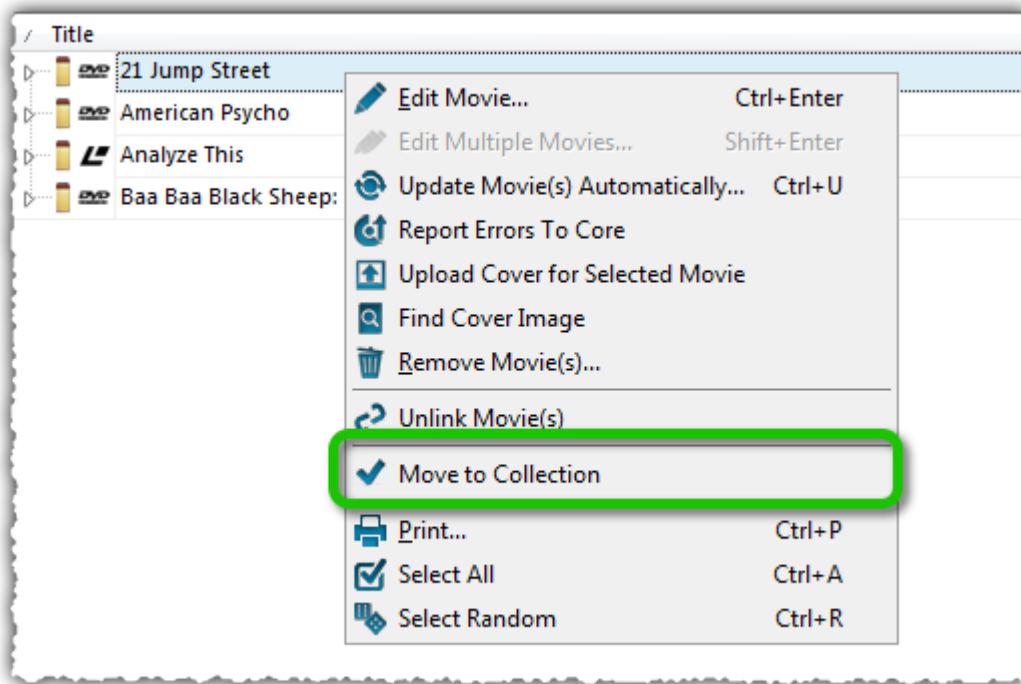
- Click *Tools > Options > Customization*.
- Look for the option "Show 'Collection Status' Indicator in List".
- The indicators are enabled by default, to disable them, uncheck the box.

• [Back to Contents](#)

Controlling your Wish List

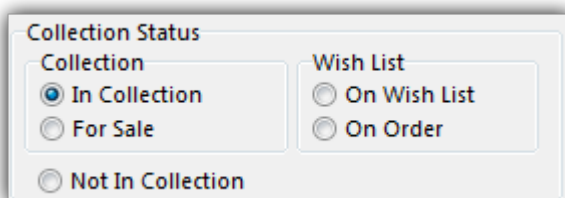
After you buy a comic on your Wish List, you'll need to move it to your collection. You can do so in a couple of ways:

- Right click on the comic in your Main List and click 'Move to Collection'



Or,

- Open the Edit Comic screen and click the In Collection button under the Collection Status heading.



- [Back to Contents](#)

User Defined Fields

If you feel like you're missing a field you really need for your collection, the Manage User Defined Fields screen comes in handy.

Add User Defined Fields to your Comic's Edit Screen

You can add User Defined Fields to your own User Tab in the Edit screen. And you can add as many as you need.

Here's how you can add your own fields to the software:

1. Click menu *Tools > User Defined Fields* to start.
2. Click the *blue "+" icon* to add a user defined field, and select the *Field Type* (*see below) you wish to add.
3. Now give your new User Defined Field a name.
4. This name will also appear in your Edit screen and Template.
5. Repeat for as many User Defined Fields you'd like to have.

✿ **Tip:** On the right hand side you can see what your Edit Comic screen will look like with your own created fields. Don't like the order? Use the blue arrow buttons on the left to move your fields up or down! Or simply drag the fields inside the list up or down to get them into another order.

Field Types

You get to choose between 7 different field types:

- **Text:** A free form text field.
- **Pick List:** The standard dropdown box where you choose one of the values.
Add values for this field via the Edit Lists screen.
- **Number (whole):** A number field that does not allow decimals.
- **Number (decimals):** A number field that does allow decimals.
- **Checkbox:** A Yes/No checkbox.
- **Date:** A standard date field with a calendar popup.
- **Checkbox List:** A list of entries for you to check or leave unchecked.
Add entries for this field via the Edit Lists screen.

Create your own Header

All your User Defined Fields (including any old ones you've used in the past) will appear under 1 tab in the Edit Comic and under one Header in the Templates in the Details Panel.

✿ **Tip:** Give your own collection of fields a Header (Tab Title) by filling in the Header field, top left of the “Manage User Defined Fields” screen. This name will be used in your “Edit Comic” screen and in the Template in the Details Panel.

Check your User Defined Fields

Edit any comic and go to your User Defined Fields tab to see your fields, and start using them.

If you add your user defined fields as columns to your list, you can also use the program’s “Edit in List” feature to edit those fields.

Your user defined fields can be printed, used for columns, used for sorting, used for statistics, export to CSV/XML etc.

Any user defined field that you can add to/edit via “Edit > Manage Pick Lists” can be folder-grouped on too via menu “View > Folders > Select Folder Fields”.

Use Caution

When you change the field types, in a lot of cases the data will stay put (type “pick list” to type “free text” for instance). In some cases you will lose everything you filled in for your own field types for all movies when you change the type. In this case:

A warning will display when there’s a chance of data loss when you move fields around/change field types.

! Proceed with caution, there is no “undo” button.

Delete a User Defined Field

1. Click menu *Tools > User Defined Fields*
2. Select the field you wish to remove.
3. Click the Recycle Bin button.
4. Click YES on the warning.

Note: this can not be undone.

Export to CLZ Mobile / CLZ Cloud / Connect for Comic

Right now, User Defined Fields are limited to our Windows and Mac OS X version **only**.

This means that currently, the User Defined Fields are *not exported* to our other products. So you will not see them on your CLZ Comics iOS / Android app, in your CLZ Cloud or in Connect for Comic.

Maintenance

- [Update File Links](#)
- [Add, Edit, Merge List Items](#)
- [Re-assigning Index Numbers](#)

Update File Links

Your comics in Comic Collector uses filepaths to show and open actual (image and digital comic) files from their original location on your computer. It can only show/open these files if they are in the location that the filepath is telling Comic Collector they are.

If you...

- Have switched computers
- Moved certain files and folders from one place to another

....then it could be that the filepath Comic Collector has stored for that image/file is now *wrong*, and that the image/file does not exist in that location anymore.

If you wish to move your images or digital files to a new location (or have indeed done so already), you can tell Comic Collector where to find them using the built in "Update File Links" screen.

Fixing broken links

Here's how to fix your broken links:

- In Comic Collector, click *Tools > Maintenance > Update File Links*
- Use the dropdown menu to filter on specific files, or leave it at "All Types" and then click "*Next Step*".
- Missing links will now show in the top panel.
- You then have two options, [Automatic](#) or [Manual](#).

Option 1: Automatically fix broken links (search your HDD for new file locations)

The automatic feature makes relinking easier if you don't know the base folder for your files, but the downside is that it can take a while longer, depending on how automatic you'd like it to be. Automatic is useful if you have a very long list of broken links, if you've moved multiple types of data (images, digital music etc) or if your images/files have been moved, but you aren't sure where you moved them to.

- Click the *Automatic* radio button and click "*Next Step*".
- Browse to the folder on your computer containing your files. Decide if you wish to also search "Subfolders" by checking the box.



Tip: Try to zoom in as deep on the folder containing your files as possible and do not just scan your entire HDD as it can take hours to scan an entire HDD.

- Click "*Next Step*".

The *New Folder* field is now populated with the new location. For every item. Check and verify that the “New Folder” column is filled in now with the found path.

- To confirm the new path that it found, click *Update File Links*.

Any links that could not be found will remain in the Update File Links screen.

Option 2: Manually fix broken links (use “Find and Replace” on the file path)

- Click the *Manual* radio button and click “*Next Step*”.
- In the top box *type* the part of the file path that you wish to replace with something else.
- In the bottom box *type* what you wish to replace it with.

Alternatively you can *Browse* to the new folder containing your files, and it will just replace the entire path with your new folder path.

The *New Folder* field is now populated with the new location. For every item. Check and verify that the “New Folder” column is filled in now with your new chosen path.

- To confirm the new path that it found, click *Update File Links*.

Any links that could not be found will remain in the Update File Links screen.

Add, Edit, Merge List Items

With every comic you add to your collection, Comic Collector stores common information in Lists. These lists come in most handy when add, or edit new comics.

All common information, such as Year, Genre, Format, Location, Owner, etc., is stored in Lists that you can easily edit. You can add, edit, delete and merge these List Items. When you do, the results of your changes are immediately visible in the drop down boxes in each Edit Comic screen.

Contents

- [Adding New Values to your Lists](#)
- [Managing your Lists in the “Manage Pick Lists” screen](#)
- [Merging List Items](#)
- [The Benefits of Pick Lists](#)

Adding New Values to your Lists

There are 2 kinds of List Fields:

- Pick List fields
- Checkbox List fields.

Adding new values to these List fields can be done from the Edit Comic Screen.

1. “Pick List” fields (dropdown boxes in Edit Comic Screen)

- Open the Edit Comic screen.
- Click on a dropdown field to see what you already have in this Pick List field.
- Type in a new value to add it to the Pick List field.
- Then click OK to save the changes and the new value will be added to the Pick List field for future use in any other comic.

2. “Checkbox List” fields (lists of checkboxes in Edit Comic Screen)

An example for a multi-value Checkbox List field is “Genre”.

For Checkbox List fields, the process is slightly different. These show up in the Edit Comic Screen as a list of checkboxes.

- To add a new value: type it in the box that is below the checklist, then click the blue + icon.
- The value will be added, checked, and saved for future use in any other comic.

[Back to Contents](#)

Managing your Pick Lists

For full control of your pick lists, you can use the Manage Pick Lists screen.

On Windows: Click *Edit* > *Manage Pick Lists* to get there and choose the list you wish to work on.

On macOS: Click *Tools* > *Manage Pick Lists* to get there and choose the list you wish to work on.

Now you can use the Add Item button (blue “plus” icon) to add your own list items. You can also remove existing entries, edit their names, merge duplicate entries and fix erroneous entries.

You can manage all the program’s “pick lists” here (Formats, Subjects, Studios, Publishers, Platforms, Series, etc...) and of course all people lists (Artists, Authors, Producers, Actors, etc...).

[Back to Contents](#)

Merging List Items

If you have “duplicates” in your Pick Lists, you can actually “merge” two list items into one. Select each one of them, then **right click** and select “Merge to:” and then pick one.

[Back to Contents](#)

The Benefits of Pick Lists

- They save you a lot of typing. Once a value has been entered in the list, you can just select it from a list instead of retyping it every time.
- The actual item name is stored in the database only once, so if you fix a typo, it automatically fixes that typo for all comics that use that item name.
- They let you control the correct sorting of person names, by entering their first and last names.
- A correctly maintained pick list ensures that your comics are correctly grouped into folders on the main screen.

[Back to Contents](#)

Re-assigning Index Numbers

How Index numbers work

Comic Collector automatically assigns and increments index numbers. The Index value is assigned when you add a comic to the database. The next comic you add to your collection will have an index number that is incremented by 1. Each Index number is only used once. When a number is deleted, the next added comic will still increment on the last added comic.

Example:

- If you have #s 1,2,3,4,5,6,7,8,9,10
- You delete #4
- The next comic you add will automatically be #11. #4 will not return.
- If you manually change #11 to #4, the next comic you add will be #12 – so you will be missing #11.

Auto Increment Index can be switched off if you want via menu *Tools > Options > Index Field*

Automatically Re-assign Index Numbers

If you automatically want to fill in the gaps, you can re-assign Index numbers:

1. Click menu *Tools > Maintenance > Re-Assign Index fields*
2. Choose which fields the software should sort all comics on, and it will assign index numbers based on that sorting.



Automatically re-assigned Index numbers can not be reverted.

Manually change Index Numbers

1. Select the comic
2. Click the Edit button (pencil button on toolbar)
3. Change the number in the INDEX field for that comic. (bottom of the edit screen).
4. Click OK.

Delete Orphaned Images

Clean up your hard-disk by deleting all unused cover images and thumbnails.

Open the tool using *Tools > Maintenance > Delete Orphaned Images*

- This tool scans your configured Images Folders to find all images that are not linked to your current database file.
- Browse the list of found orphaned images in List or Images View. Check thoroughly to make sure these can all be deleted.
- Finally, use the red “Delete Selected Images” button, and all “checked” images will be removed from your computer.



Do NOT use this tool if you have multiple databases !!!!
This tool deletes all images that are not linked to the database you have open, so that includes images that are linked to **other** databases!

Find duplicate comics

You can use this tool to find out if you've accidentally added multiple versions of the same comic, but perhaps with a different barcode or something else.

Find and remove duplicate comics

1. Click menu *Tools > Maintenance > Find Duplicates*.
2. Select which field to find duplicates on using the dropdown menu
3. Click "**Find Duplicates**" to find your duplicates.
4. Now use the blue "**Keep**" button to keep a group of duplicates, or use the red "**Remove**" button to remove a duplicate!

If you click "Remove all duplicates automatically" the program will remove all duplicate entries and will only keep 1 single entry (the oldest one) in your database.



Use the **columns button**, top right, to set up the columns you'd like to see!

Loan Manager

Introduction

Comic Collector's Loan Manager allows you to track comics that you've loaned, who you've loaned them to and when they are due to be returned. The Loan Manager can also warn you when a comic on loan is overdue.

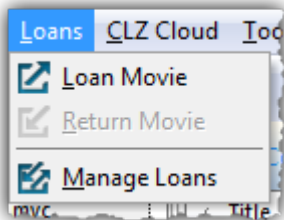
Contents

- [Loaning a comic](#)
- [The Loan Manager](#)
- [Using a barcode scanner to loan comics](#)
- [Returning comics](#)
- [Managing Loanees](#)
- [Overdue loans](#)

Loaning a comic

Loaning a comic from Comic Collector can be done in a few different ways:

1. Via the Loans menu.



- Select the comic you wish to loan from your Main List
- Click *Loans* > *Loan Comic*

2. Using the icon in your toolbar



- Select the comic you wish to loan
- Click the icon with the arrow (shown above)*

After selecting one of the methods above, a new screen will appear.

Here you can define who you are loaning the comic to as well as specifying the loan and due date.

If you accidentally set a return date, click *Clear* to remove it.

✿ You can place multiple comics on loan to one person by holding CTRL then clicking on the comics in your Main List. With all the comics selected, use one of the methods above to place all those comics on loan.

Once you've defined the date and the Loanee click OK and the comic will be placed into your Loan Manager.

- [Back to Contents](#)

The Loan Manager

The Loan Manager enables you to quickly see which comics are on loan, who they are on loan to and most importantly, which comics are overdue. You can also loan and return comics directly from here using your barcode scanner.

To access the Loan Manager click *Loans > Manage Loans*.

At the top you can see comics which are currently on loan.

Entries highlighted in red indicate that the comic is overdue.

Below the Current Loans you have your Loan History, this contains the history of all comics you've ever loaned, who to, and when they were returned.

✿ You can sort or filter your list using the columns and search box. Click a column header to change the sort order, or type something, such as the loanee name into the search box. To activate/deactivate a filter, click the funnel icon next to the search field.

- [Back to Contents](#)

Using a Barcode Scanner To Loan Comics

You can use your barcode scanner to quickly loan and return comics via the Loan Manager screen. Here's how:

- Click *Loans > Loan Manager*
- Select 'Loan a comic'
- Define a Loanee and due date for the loan

- Click in the barcode field then scan the comic's barcode with your scanner
- The comic will automatically be added to your current loans
- [Back to Contents](#)

Returning Comics

Returning comics is just as easy as putting them on loan. You can use the same menu or icons you used when loaning the comic.

1. Via the Loans menu

- Select the comic you wish to return from your Main List
- *Click Loans > Return Comic*

2. Using the Loan icon in your toolbar

- Select the comic you wish to return from your Main List
- Click the icon shown above to return the comic

3. Via the Loan Manager

- Click 'Return an comic'
- Scan the barcode into the barcode field
- You can also return comics by dragging them from the Current Loans to the Loan History.

Managing Loanees

During the process of loaning a comic you are asked to specify who it will be on loan to. When you do this, the name is automatically added to your 'Loaned To' list.

You can add details such as the loanee's home address, telephone number and e-mail address. Here's how:

- Click *Tools > Manage Pick Lists*
- Use the blue folder icon in the top left to locate the 'Loaned To' list
- Click the + to create a new entry, or double click an existing one to edit
- Here you can enter additional information about the loanee

Overdue loans

The new Loan Manager now has a built in notification system. If a comic on loan becomes overdue, a pop up appears when you start Comic Collector.

This warning will appear each time you start Comic Collector and you have an overdue loan. You can disable the warning by ticking the box 'Don't notify me...'. You can also toggle this warning in the Options.

- Click Tools > Options > Loans (*on macOS click Comic Collector > Preferences > Loan Management*)
- Here you can control whether or not you'll be warned about overdue loans

Multiple collections

Comic Collector allows multiple sub-collections within one database file. The collections will appear as little tabs at the bottom (e.g. like in Excel), so that you can easily switch between them.

Create and manage collections

Go to menu **File > Manage Collections** to create a new collection, rename existing collections, remove a collection or change their order (drag and drop).

Merging existing database files

You can merge existing database files into one single database with multiple collections.

Use **File > Import from > Other Database** to import other database files into one master database, as separate collections. You will get a popup asking you if you wish to import the database as a separate collection.

Moving comic(s) to other collections

You can freely move one or multiple comics between collections in your database file.

1. Right click on a comic (or multiple) and select **Move to other collection**.
2. Select the collection you wish to move it/them in.

The option to move to other collection only appears if you have multiple collections (so use File > Manage Collections to create an extra collection first).

Browsing

- [Searching](#)
- [Sorting your Collection](#)
- [Grouping into Folders](#)
- [Choosing Columns](#)

Searching

- [Quick Search](#)

Quick Search

The Quick Search box can be found top right of your screen. Type the series or barcode of the comic you wish to find and type “Enter” to perform the search.

Comic Collector will find your title, but it can also find other entries depending on what you searched as the program also searches quite a few other fields of all comics.

Click on the “X” inside the Quick Search box to cancel the search and return to your list of comics.

Filter

With the filter screen you can filter your comics on all sorts of details. You may be looking for a comic with a specific price (or maybe higher than / lower than) or perhaps a comic from a certain year. You can create a filter for every field you have added to your comics in your database.

The Filter Screen

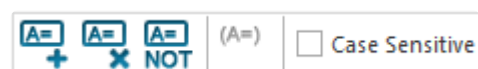
Open the filter screen by clicking menu “*Search > Set Filter > Create/Modify Filters*”. On the right, you can see 4 buttons. From left to right they are:



1. New Filter
2. Duplicate Filter
3. Rename Filter
4. Delete Filter

Underneath those 4 filter buttons you see a white box, this is where your saved filters will be. It should contain a couple of example filter settings.

On the left you see a large white block which is your “*Condition Panel*”, where you set up the filter. At the top of the Condition Panel the buttons from left to right are:



1. Add a condition
2. Remove condition
3. Not: Invert selected conditions
4. Group selected conditions

Creating a new filter

The best way to explain how to add a new filter is to give an example. For this example you’re going to create a filter for:

“Expensive comics released between 2010 and 2016”.

First think of how such a filter would work: expensive comics released between 2010 and 2016. So you need these 3 conditions:

- Purchase Price higher than X (I will choose “90” for this example)

- Released after 2010.
- Released before 2016

This means you need to add 3 conditions to your Condition Panel on the left and set them up:

1. First click the “New Filter” button (the blue plus icon) to create a filter.
2. Give the new filter a name. For example: “Expensive comics released between 2010 and 2016”.
3. Add a condition by clicking the “*Add a condition*” button (top left of the screen) and set up these 3 things:
 - a. Field: From this list select “Purchase Price”
 - b. Comparison: Set it to: “greater than or equal”
4. Value: Set the value it should be greater than or equal to, for instance: “90”.

Add two more conditions the same way, but for “Field” you now choose “*Release Year*”.

1. Set the second condition to: Release Year > Greater than > 2009
2. Set the third condition to: Release Year > Less than > 2017
3. Hit “OK” to activate the filter.

Result: This will give you comics that have a purchase price of “90” or higher, and have been released in either 2010, 2011, 2012, 2013, 2014, 2015 or 2016.

And / Or

When you add a new condition you will see “AND” between them. This is to indicate both conditions are “required” for the results. You can also set it to “OR” to indicate you want either of the 2 conditions (or more) to be used for the results.

NOT: Invert Selected Condition

Select a condition and click on the “NOT” button to invert the selected condition.

Group Selected Conditions

If you wish to create a filter where a certain condition is executed first, you will need to group selected conditions between brackets.

Here’s an example where you would need it:

Say you’d like to show items with purchase price 30 that have the country field in filled in as either France or Spain. For this you would need this filter:

“Purchase Price equals 30 AND (Country equals France OR Spain)”

So you’ve made your filter:

- Purchase Price equals 30

- AND
- Country equals France
- OR
- Country equals Spain

You now need to group the 2 country conditions. Here's how:

1. Click the condition for "Country equals France".
2. Hold SHIFT on your keyboard.
3. Press ARROW DOWN twice until you get to condition "Country equals Spain"
4. Click the button to group selected conditions: **(A=)**

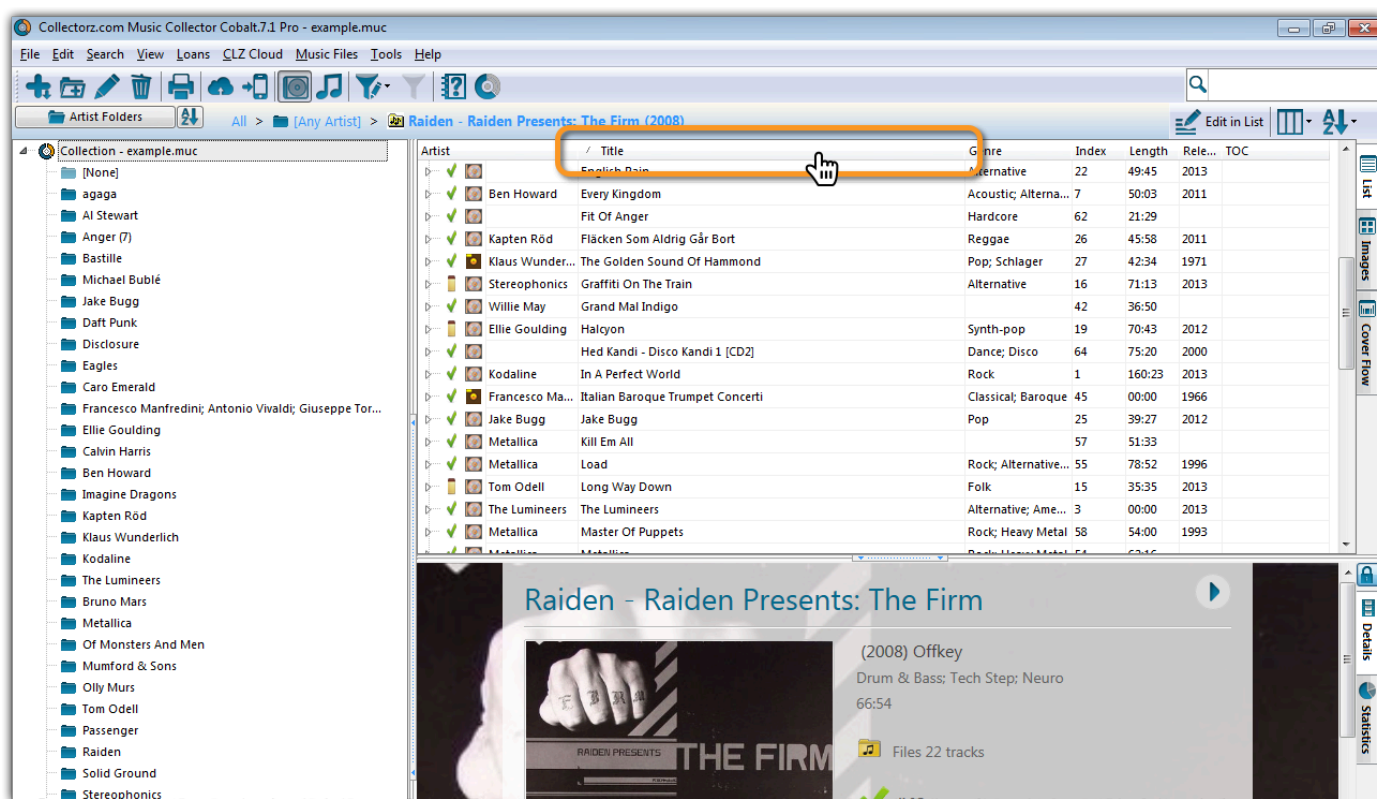
Sorting your collection

With your collection stored digitally on your computer, sorting your list in various different ways can be done in a few clicks:

- [Click a Column Header](#)
- [Sorting on Multiple Fields](#)
- [Sorting by Series](#)
- [Sorting by Person fields](#)
- [Sorting on Date Added](#)

Click a Column Header

The most basic way to sort your list is to click on the column header of the field that you want to sort on.



For example, if you want to sort by Release Year, click on the header of the Release Year column in the list. Instantly your list will rearrange, oldest items at the top, the newest ones at the bottom. If you wish to have it sorted the other way around, click on the column header again to reverse the order.

Read more about [changing columns](#) in our manual.

Sorting on Multiple Fields

Comic Collector also lets you sort on multiple fields:

You can define your own Sorting settings views via the “Select Sort Fields” screen.

- Click `_View` > Sort order > Manage Sort Presets
- Click *Create new preset* to create a completely new preset.
- Checkbox the fields you wish to sort on.
- Make sure you drag the first field you wish to sort on to the top of the list on the right.

In your list of Sort Presets you can also modify or delete existing presets, and you can drag/drop them up/down the list.

Sorting by Title

If you tell the program to sort on the Title field, it actually uses the “Title Sort” field instead (if it is filled in). If the Title Sort field is not filled, the Title field itself is used. You can find and change the Title Sort field in the Edit Comic screen. For instance, if the series is “The Scrupulous Comic”, you can set the Title Sort field to “Scrupulous Comic” to make it appear in the S’s when sorting, while still displaying ‘The Scrupulous Comic’.

✿ You can use the *Generate* button above the Title Sort field to generate the Title Sort field automatically.
 Use *Tools > Options > Title Sort* to tweak the list of recognized articles (we already added a couple for you there).

Sorting by Person field

When sorting on a “person” field, the program automatically sorts on the person’s “Sort Name” which is Last Name, First Name. By default, the program shows the Display Names in lists, while it sorts on the Sort Names. For the name John Doe for example, the program will use “Doe, John” for sorting, making sure the item is sorted in the D (of Doe) range instead of the J (of John) range. This only works if the person’s first and last name are filled in correctly.

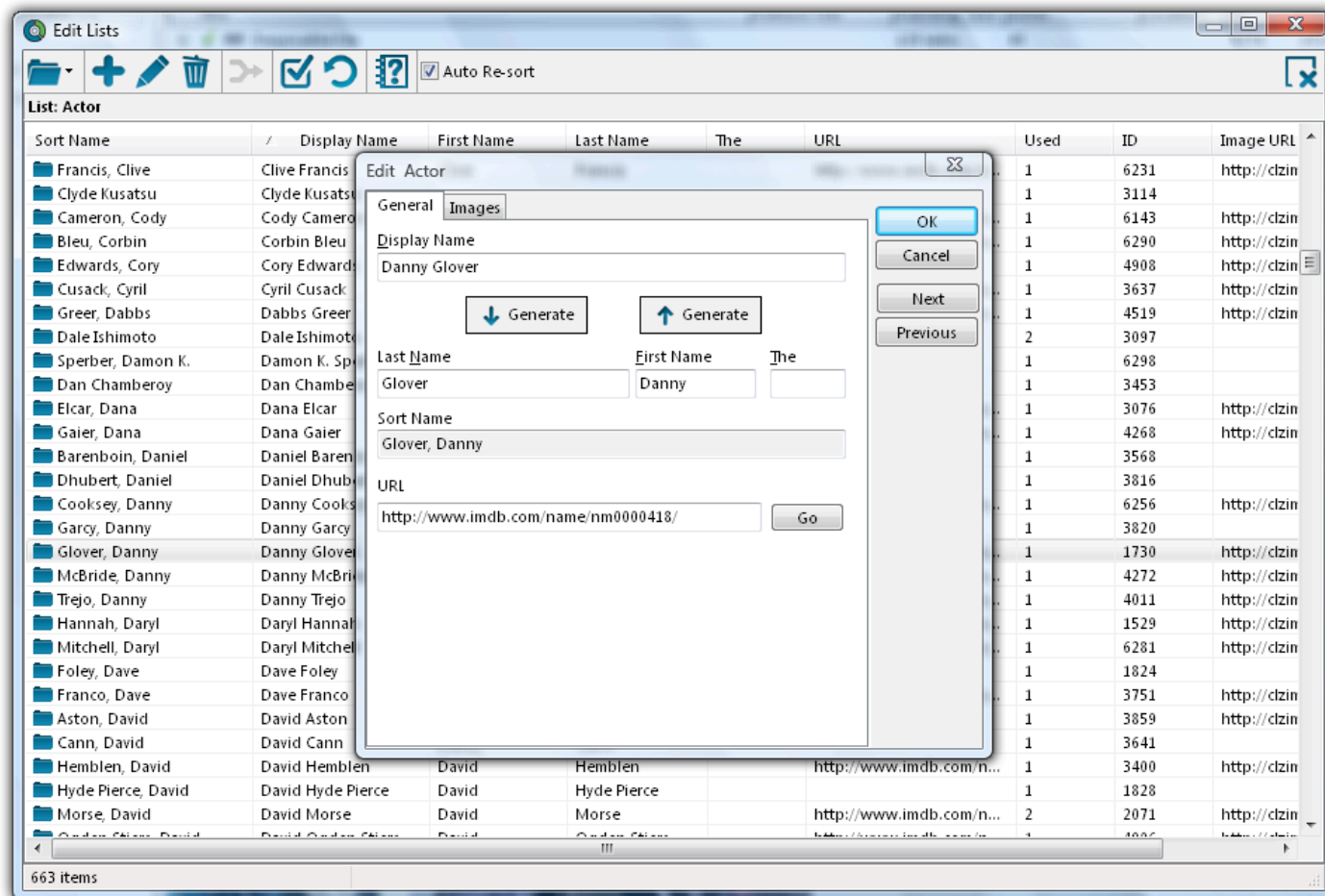
You can change a name by editing the comic this person is in, and finding the field this person is in on the various tabs. You can directly modify the first and last name there.

Any other comic that is using the same person, will also receive these name changes so you only have to set the name correct once.

- Edit names via the Edit Comic screen:

Alternatively, you can go to *Edit > Manage Pick Lists* Select which list you want to edit (e.g. the Writer List). Double click items to modify or fill in First and Last Names.

- Edit names via the Edit Lists screen:



If you want, you can make the program show Sort Names in lists instead by checking the “Show Names as “Last Name, First Name” setting.

This option is found in the menu *Tools > Options > Sorting / AutoCap / Index*.

Sorting on date added

You can choose “Date Added” as a column in your list from the *View > Columns > Edit Current Column Favorite* screen

Then, in the main screen, click the column header to sort by date added.

Grouping into Folders

Introduction

Folder grouping allow you to browse your comics grouped into folders. Almost any field in Comic Collector can be set as a folder group option.

Comic Collector comes with a variety of pre-set folder group sets, but you can also create your [own Saved Folder Presets](#).

Selecting a Folder view

To start viewing your comics grouped in folders:

- Click on menu *View > Folders*, and then pick one of the pre-sets.

Comic Collector then automatically groups all your comics into folders based on the information it has on those comics.

If you wish to disable folders, click *View > Folders > No Folders*.

Define your own Folder views

You can define your own folder views via the Folder Field Selection screen.

- Click *_View > Folders > Manage Folder Presets*
- Click *Create new preset* to create a completely new preset.
- Checkbox the fields you wish to folder group on.

In your list of Folder Presets you can also modify or delete existing presets, and you can drag/drop them up/down the list.

The [None] Folder

When selecting certain Folder Sets, you may notice the [None] folder at the top of the list.

The [None] folder contains comics in your collection that have not been assigned a value for the folder set you've selected. For example, if you have selected Genre folders, the [None] Folder will contain comics in your collection that do not have a Genre assigned. If the Subject folders are selected, then the [None] folder contains comics that do not have a subject, etc.

To remove items from the [None] Folder, you will need to specify a value for the comic that appears in the [None] Folder. Open the Edit Comic screen and enter something for that field, the comic will then be moved

out of the [None] Folder.

Important to know:

Q: *How do I create a new folder?*

A: You don't actually "create" folders in your main screen. Folder grouping happens automatically based on what information you have for your comics.

Example: If you are using "Genre" folders right now, and you set "Comedy" as a Genre for a comic, that comic will appear in the "Comedy" folder.

Q: *How do I move comics to another folder?*

A: Example: Wish to move the comic from the "Comedy" genre folder to the "Horror" genre folder?

To do this, Edit the comic and uncheck "Comedy" as a genre, and then check "Horror" as genre. Hit OK and it will now be in the "Horror" folder in your main screen.

Q: *Why do I see my comic in multiple folders?*

A: Example: If an comic has multiple genres, it will appear in multiple genre folders.

Choosing Columns

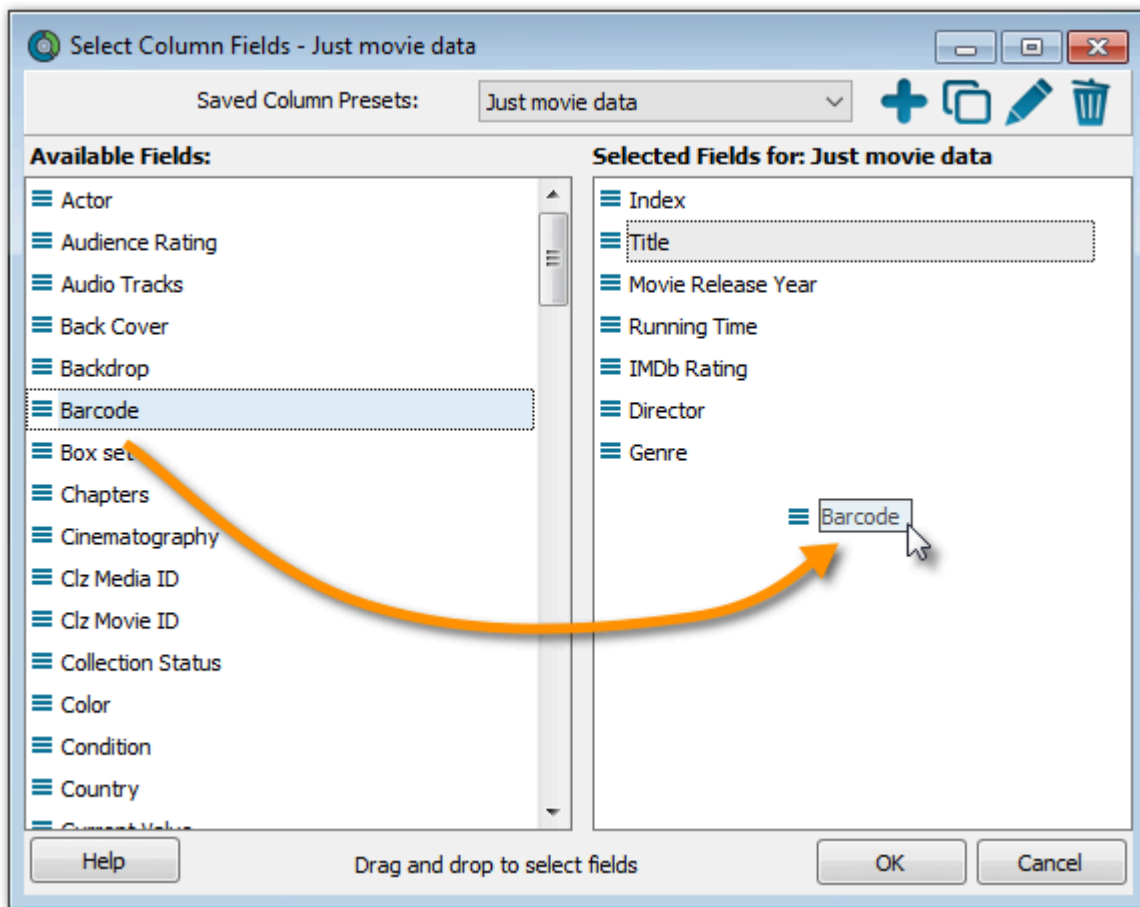
Contents

- [Adding or Removing a Column](#)
- [Change the order of the columns](#)
- [Create/change a Saved Column Preset](#)

Adding or Removing a Column:

To add or remove a column, first access the Column Field Selection screen:

- Windows: Click on menu *View > Columns > Select Column Fields*
- Mac OS X: Click on menu *View > Select Column Fields*



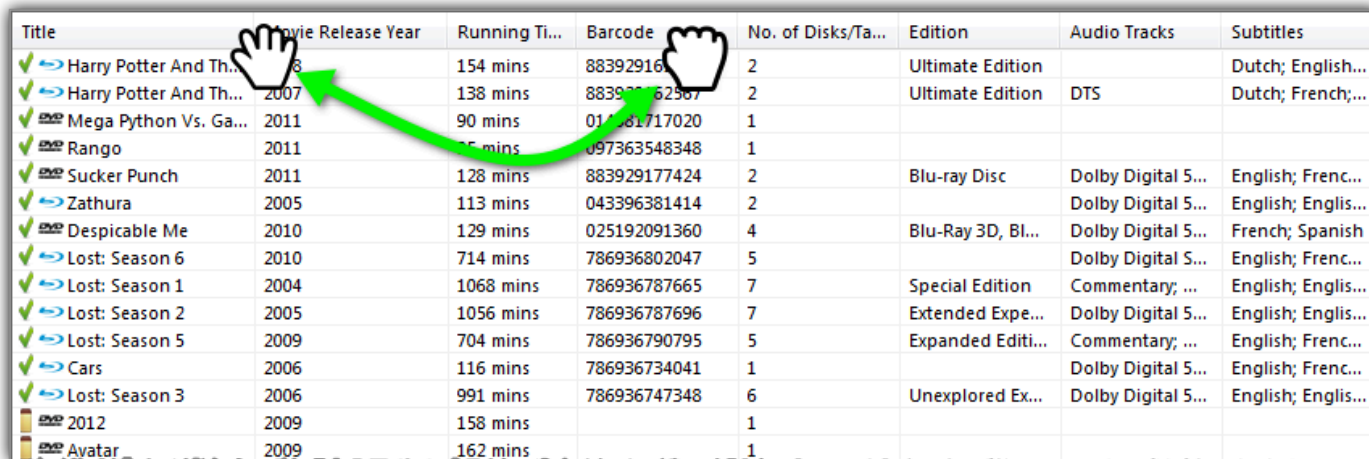
- This is the Select Column Fields screen.
- Fields available for use as Columns are shown on the left.
- Fields currently used as Columns are shown on the right.

You can click and drag from the section on the left to the Selected Columns area on the right. (or drag back fields you don't want).

- [Back to Contents](#)

Changing the order of the columns

In the main screen in your list, you can change the order of your columns by clicking and dragging them left/right to another position:



Title	Movie Release Year	Running Time	Barcode	No. of Disks/Tapes	Edition	Audio Tracks	Subtitles
✓ Harry Potter And The...	2008	154 mins	88392916	2	Ultimate Edition		Dutch; English...
✓ Harry Potter And Th...	2007	138 mins	883929162587	2	Ultimate Edition	DTS	Dutch; French;...
✓ Mega Python Vs. Ga...	2011	90 mins	01981717020	1			
✓ Rango	2011	75 mins	097363548348	1			
✓ Sucker Punch	2011	128 mins	883929177424	2	Blu-ray Disc	Dolby Digital 5...	English; Frenc...
✓ Zathura	2005	113 mins	043396381414	2		Dolby Digital 5...	English; Englis...
✓ Despicable Me	2010	129 mins	025192091360	4	Blu-Ray 3D, BI...	Dolby Digital 5...	French; Spanish
✓ Lost: Season 6	2010	714 mins	786936802047	5		Dolby Digital 5...	English; Frenc...
✓ Lost: Season 1	2004	1068 mins	786936787665	7	Special Edition	Commentary; ...	English; Englis...
✓ Lost: Season 2	2005	1056 mins	786936787696	7	Extended Expe...	Dolby Digital 5...	English; Englis...
✓ Lost: Season 5	2009	704 mins	786936790795	5	Expanded Editi...	Commentary; ...	English; Frenc...
✓ Cars	2006	116 mins	786936734041	1		Dolby Digital 5...	English; Frenc...
✓ Lost: Season 3	2006	991 mins	786936747348	6	Unexplored Ex...	Dolby Digital 5...	English; Englis...
✓ 2012	2009	158 mins		1			
✓ Avatar	2009	162 mins		1			

- [Back to Contents](#)

Create/change a Saved Column Preset

You can switch between Saved Column Preset via the “Column” icon top right of your “List” panel in the main screen.

We added a couple you can check out. Click the “Column” icon and see which ones you can try.

You can also create your own:

- Windows: Click on menu *View > Columns > Select Column Fields*
- Mac OS X: Click on menu *View > Select Column Fields*

Create a new Saved Column Preset with the blue plus icon. Give it a name and click OK.

Now drag the fields you wish to use in this Saved Column Preset from the available fields on the left, to the right.

Importing / Exporting

Text/CSV import:

- [Full import via Connect](#)
- [Limited import](#)

Export to Text/CSV/Excel:

- [Export to Text / CSV](#)
- [Export to Excel](#)

Backup :

- [Creating a Backup](#)

Import from Text / CSV

You can import an existing text or CSV file into Comic Collector.

The program has an import screen available with which you can import a limited set of fields:

- [Full import via CLZ Cloud](#)
- [Limited import](#)

Full import via CLZ Cloud

To perform a full import from a text or CSV file you can use the CLZ Cloud Import Tool. The steps consist of first importing all items into CLZ Cloud, and then syncing those items from CLZ Cloud to Comic Collector on your computer.

1. Importing your Text/CSV file to CLZ Cloud

1. Go to the [CLZ Cloud](#) website and log in with your CLZ Account.
2. Click the menu icon top left and click “**Import Data**” to enter the import screen.
3. Click “**Import from Text / CSV File**”.
4. Upload your Text / CSV file.
5. Change the data format settings so it looks correct under the preview.
6. Under “Select your Column fields” pick the fields to **match** your fields! Note that you can also skip fields.
7. Click “**Import comics**” to run the import.



It is important that you match your text file to the fields **we have**. You do this **in step 5** where you **select the fields to import**.

Import problems?

If you're having troubles with this, make sure you re-check **step 4** to make sure all columns you're importing **match a field** that we provide.

If you can not match a field to one we have, you can decide to add that column of information to the notes of each comic or just skip that column altogether.

2. Syncing from CLZ Cloud to Comic Collector on your computer

After you've done the import you now need to get all those imported comics from CLZ Cloud to Comic Collector on your computer:

1. Start Comic Collector.
2. Click menu *CLZ Cloud > Synchronize*.
3. Log in using the same CLZ Account you created/used on the Comic Cloud page.
4. Click *Sync Changes* to sync all comics to your computer.

Done! You should now have all comics in Comic Collector on your computer.

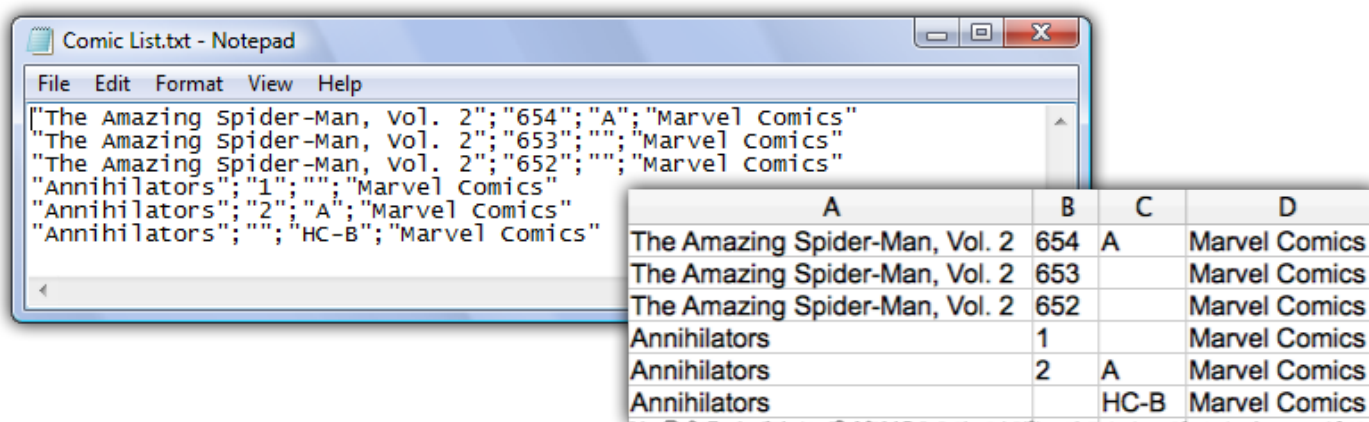
Limited import

Contents

- [Preparing for import](#)
- [Importing](#)
- [Updating your data](#)

Preparing for import

With Comic Collector you can import a [.csv](#) or text list. Comic Collector's text import is limited to these fields: **Series**, **Issue No.**, **Issue Ext** and **Publisher**. It is not possible to import any additional fields.



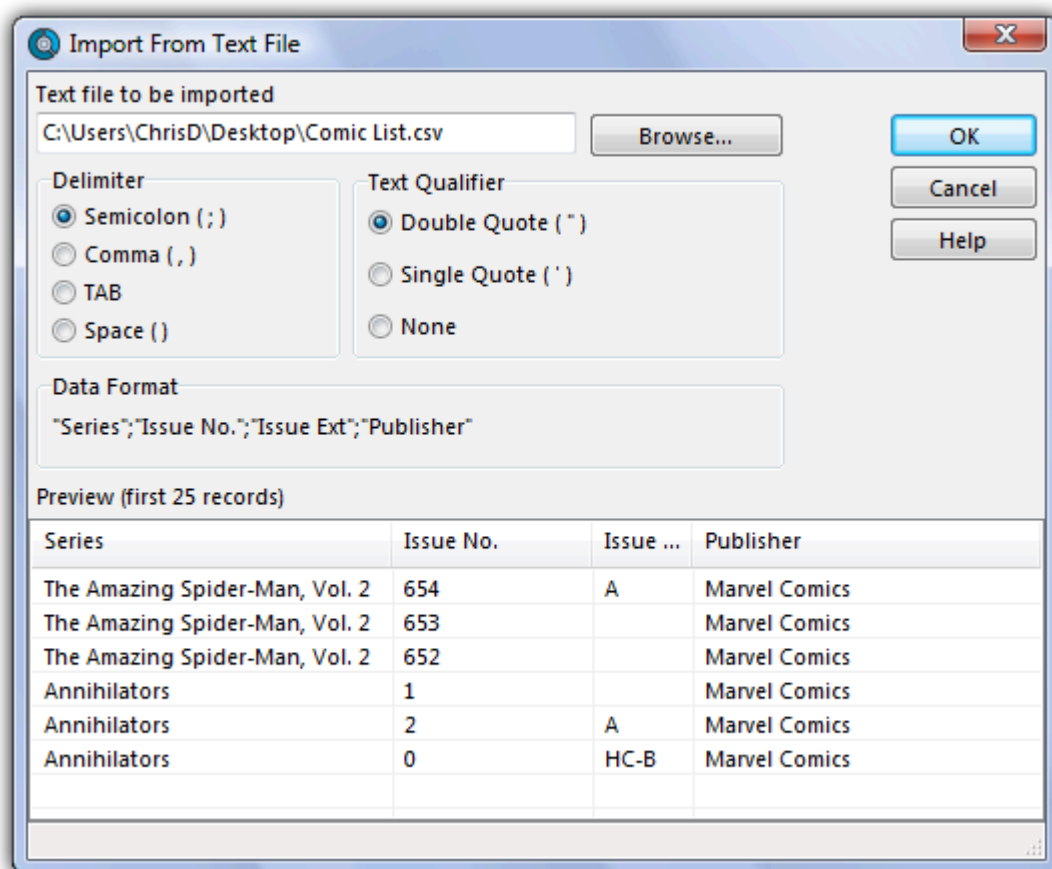
✿ Your text file must contain only these fields, and must also use the same order: **Series**, **Issue No.**, **Issue Ext** and **Publisher**.

1. Create a *.txt or *.csv file with a text editor program such as Notes or TextEdit with all your "to be imported" comics (you can also export to a *.txt or *.csv file from your Spreadsheet program).
2. Save this text or CSV file (with UTF8 encoding).

Importing

Here's how to import your text / csv file:

1. Start Comic Collector
2. Click: *File > Import From > Text*
3. Click *Browse* and locate your txt/csv file
4. Set the text qualifiers and delimiters to match your text file
5. *Check the preview** to ensure everything appears correctly
6. Once complete, click OK to import the list



✿ If you check the preview and nothing shows, at all, it means your Text or CSV file is not saved with "UTF8" Encoding. Open it with your text editor and **re-save it with UTF8 encoding**.

Updating your data

After importing you can retrieve more information from the Core for Comics Online Database. Here's how:

1. Click *Edit > Select All*
2. Click *CLZ Core > Update Comic(s) from Core*
3. A message will appear asking you if you'd like to link your comics, click Yes.
4. Comic Collector will now search our online database
5. Results will be shown at the bottom of the screen
6. Select a result from our database then click *Update*

Link Comics

Your Issues:

Issue	Series	Title	Date	Publisher	Status
2	Annihilators			Marvel Comics	3 matches found and 1 selected
0	Annihilators			Marvel Comics	Not searched yet
1	Annihilators			Marvel Comics	Not searched yet
6...	The Amazing Spide...			Marvel Comics	Not searched yet
6...	The Amazing Spide...			Marvel Comics	Not searched yet
6...	The Amazing Spide...			Marvel Comics	Not searched yet

Search Issue Search All Stop Skip Link Link All

Collectorz.com Online Issues

Issue	Series	Title	Edition	Date	Publisher
<input type="radio"/> [None]					
<input checked="" type="radio"/> 2A	Annihilators	Dark Sun Rise		2011...	Marvel Comics
<input type="radio"/> 2B	Annihilators	Dark Sun Rise ...		2011...	Marvel Comics
<input type="radio"/> 2	Annihilators Earthfall			2011...	Marvel Comics

Image download completed

Annihilators #2A

Comic Collector

no cover image
click here to find one now

Marvel Comics

Annihilators #2A

Dark Sun Rise

Find Cover

Marvel Comics

- [Back to Contents](#)

Export to Text / CSV

Here's how you can export your collection to a text or CSV file:

- Click: *File > Export to > Text...*
- In the Export to Text screen, you can select the Sort Order (or use the Main Screen setting). You can also select the fields you want to export.
- Name your file and give it a location using the BROWSE button
- Click the Export button to export!



On macOS computers, the file will always save as a .txt file. You can change the extension of the file to .csv later if you'd like.

Creating a Backup

Automatic Database Backups

Comic Collector automatically keeps multiple time-stamped backups of your database file

- The software keeps multiple time-stamped database backups, saved to your Backups folder as “backup of [yourdatabasename] – [timestamp]”.
- Use the “Number of Days” setting in Tools / Options / Backup to select how many days of backups you want to keep. Older files are automatically pruned.
- Use the Tools / Maintenance / Restore Database submenu to easily restore a backup. Restored backups are copied back to your Data folder as “[yourdatabasename] RESTORED”.

! The automatic database backups do not include your image files, it is just a backup of the database itself.

Creating an External Backup manually

Although Comic Collector creates an immediate backup of your database file, it's advisable to create an external backup of your complete collection (including thumbnails and images), in case your computer catches a virus. Or worse.

To do this, copy the complete Comic Collector folder (with it's subfolders) to an external hard disk, a USB stick or burn it to a CD-ROM or DVD.

Below are the default locations of the Folder that you need to backup:

Default location of the user folder used in Comic Collector

Windows Vista, 7, 8 and 10: Documents/Comic Collector



The *.CMC file contains all information on your collection, but not the images.

Printing a Simple List

To print a basic list, follow the steps below.

- Click menu *File* > *Print* to start.
- Top left, you can select which comics to print. If you wish to print all comics, leave it at **All Comics**. If you wish to print a selection you made, set it to **Selected Comics**
- Top right, under **Sort Order** is where you control in which order your comics will be printed, e.g. alphabetically by Title, or in Purchase Date order, you decide. Your choices here:
 - Have your list the same way your main screen is currently sorted by clicking “Use main screen setting”.
 - Or click “Custom setting for printing” and see that the “Sort Fields...” button is enabled. Use this button choose the fields you want your list to sort on (Title, Release Year, anything you want).
- Next, make sure that the selection on the left (under “Layout”) is set to **List**.
- Now you can use the **Columns** button to select the fields that you want to see as columns in your printed list.

This is the most important setting as it determines what your list will look like.
- Under List type, select **Single Long List**.
- Choose a **Report title** for this list (e.g. My Movie List). This title will appear on page one at the top of your list.

Export to Excel

Step 1: In Comic Collector:

1. Use the menu *File > Export to > Text*.
2. Choose which fields you would like to export through the **Fields** button.
3. Click 'Browse' to define a location for your export.
4. Choose a filename for the export, and save as either **.txt** or **.csv**.

Step 2: In Excel:

1. Open the .csv or .txt file you saved.
2. Excel will place the fields properly into columns.



Note: You can not import changed data back into our software from Excel.

Warning: "Could not create file"

If you get this warning, please ensure you've specified a location for the export. So: Make sure you click 'Browse' from within the Export to File screen to define a location for the export.

CLZ Cloud / Core

- [Synchronize with CLZ Cloud](#)
- [How the CLZ Cloud works](#)
- [Linking your comics for CLZ Cloud](#)

Synchronize with CLZ Cloud

CLZ Cloud is an online service for storing and backing up your collection database in the cloud. It is also used to sync data between devices, e.g. from your Windows or Mac software to your app, but also between phones and tablets.

If you own multiple devices, e.g. a phone and tablet, you will need a CLZ Account so that you can sync data between your devices.

Syncing your collection with CLZ Cloud

Windows / Mac

1. Click on menu “*CLZ Cloud > Synchronize*” or click this button on the toolbar:
2. The program will now check if there are any changes that need to be synced up or down.
3. Click the “Sync Changes” button to process all changes.



* If you cancel the sync at any point, or the connection gets interrupted, you can restart the sync and it will continue where it stopped.

iOS / Android

1. Tap the menu top left and tap “Sync with CLZ Cloud”
2. The app will now check if there are any changes that need to be synced up or down.
3. Tap the “Sync Changes” button to process all changes.

* If you cancel the sync at any point, or the connection gets interrupted, you can restart the sync and it will continue where it stopped.

If you're getting any errors, please consult [the troubleshooter](#).

Uploading Images

Comic Collector will try to upsync cover images for comics that don't already have a cover in the CLZ Cloud. The images are restricted to 500kb in size, if your images are larger than this, they won't be uploaded.

Images are only automatically upsynced to CLZ Cloud if:

- The image is below 500kb in size
- Your comic is not linked
- We don't already have a cover for that comic
- The cover we have is of lower quality

If we already have a cover for your comic the default image from Core for Comics. That's why" it's important to link your comics":#linking-your-items to the correct comic in Core for Comics (only possible on PC/Mac currently).

If you have a cover that you want to upsync to CLZ Cloud even though there's already one in CLZ Cloud you can do this using this method:

Manually Upload a Cover to CLZ Cloud

Windows/Mac

1. Edit the comic
2. Click the "Images" tab and check the box for "Custom Image"

iOS/Android Mobile device

1. Select an comic
2. Tap the pencil icon to edit the item.
3. Near the cover image check the box for "Custom Image"

How the CLZ Cloud works

CLZ Cloud is a free service for storing and backing up your collection database in the cloud. It is also the recommended way for syncing data between devices, e.g. from your Windows or Mac Comic Collector to CLZ Comics on iOS / Android, but also to sync between your mobile devices.

If you own multiple devices, e.g. iPad and iPhone, you will need a free CLZ Account with free CLZ Cloud service enabled so that you can sync data between your two devices.

Using the CLZ Cloud service is free for everyone, including desktop software owners, and owners of the mobile apps.

Linking your comics for CLZ Cloud

Linking your comics for syncing with CLZ Cloud

Before uploading your comics to CLZ Cloud from the Windows or Mac software, you can “link your comics”.

Comic Collector, CLZ Cloud and Linking

Comic Collector is built around our central online database: **Core for Comics**. For the online user databases in CLZ Cloud, all factual comic details (cover artist, writer, etc) and cover images are used and shown directly from *Core for Comics*.

This factual comic data is not stored per user. Instead, it is stored only once, inside Core for Comics then linked to for every CLZ Cloud user that owns that comic.

This factual data is not uploaded to CLZ Cloud when you sync your data from Comic Collector. It only uploads your personal data fields like Collection Status, Purchase information, Notes, Rating, etc...), plus the link to the corresponding comic entry in Core for Comics (basically just the CLZ Comic ID of the entry inside Core for Comics).

So in order to see full comic details and cover images in CLZ Cloud, it is essential that your local comic entries are linked to the corresponding entries in Core for Comics.

Without linking, your comic entries will show up as simple Title entries, with just your personal data. No cover artist, writer, etc.

How to link your comics

If you have been using the Add Comics Automatically screen to catalog your comics, selecting and downloading the data from Core for Comics, then most of your comics will already be linked.

You will only need to link the comics that you added manually.

To link your comics, click menu *CLZ Cloud > Link Comics* and let the program search for your comics in the Core for Comics. Link whatever you can (no problem if you can't link a couple).

You can search all of them at once, or check the results and focus on each single comic before linking it.

The advantages of the Linking with Core for Comics and central shared data in Core for Comics

*Automatic Updates: * When our content managers or other users update the comic information in *Core for Comics* (e.g. to add a better cover image, to improve data, or to fix a typo), you will immediately see those

changes in CLZ Cloud.

No need to “Update Comics Automatically”. Your collection in CLZ Cloud always automatically shows the latest version of the data and cover art.

It’s fast: Sharing the factual comic data means that its retrieval can be optimized (e.g. by caching), resulting in a smooth experience when browsing your CLZ Cloud comic collection. Also, syncing up from your desktop/mobile app v is very fast, because only your personal data and a single ID value needs to be uploaded to your CLZ Cloud.

It’s efficient: Shared factual comic data is only stored once, which means our servers are not clogged by duplicate copies of data and images (that are all the same for every user). This also makes it possible for our systems to make daily backups of your comic collection data.

What if a comic is not in Core for Comics?

This shouldn’t happen too often, but here’s what you can do to handle this situation and at the same time help us improve Core for Comics:

Good to know: You **can** upload and keep unlinked comics in your CLZ Cloud. Unlinked items will show up online with just some basic information and will include your personal data, including the cover image that you may have added yourself to the unlinked comic.

TIP: For comics not available in our central database, make sure to include the barcode in your unlinked entry, so that our Content Team can spot popular “un-linked” comics and add them to the central database. As soon as they do, your entry will automatically become a full entry with all comic information.

Also, if you **do** have full information for that comic you can right click it in your collection and report it to Core to add/make correction in Core for Comics.

Report / Submit to Core

Comic Collector is built around the our central online database: **Core for Comics**. It's the central online database that is searched when you use the Add Automatically screen in Comic Collector, and the central online database that is used to display all kinds of shared information in your CLZ Cloud.

Our content managers work on Core for Comics every workday here to keep Core up to date with the latest comics and their cover artist, writer, etc.

Of course, it can and will happen that we're missing some details for your comics here and there. It might also happen we don't have your comic at all.

For this we created a Report / Submit to Core option in Comic Collector.

Submit a comic directly from Comic Collector

1. Select any comic in your collection and click menu "*CLZ Cloud > Submit Comic to Core*".
2. Comic Collector will grab your comic and upload it to Core for Comics.
3. Your webbrowser will open up Core for Comics and ask you to login with your CLZ Account
4. You can compare your submitted data to the data that is stored in Core for Comics
5. **Important:** After you're done with the repairs you wish to make in Core for Comics, click the **green "Submit Changes" button**, bottom left of the page.



The "*Submit to Core*" button can also be found in the right click menu (when you right click an comic and also inside the "Edit Comic" screen.

Report a missing comic

If you try to search a comic automatically with the Add Automatically screen, but Core for Comics doesn't have it, you will be prompted to report the missing comic to core.

CLZ Comics Mobile App

- [Sync with CLZ Cloud](#)
- [Exporting with Wi-Fi / USB](#)
- [CLZ Movies for iOS](#)
- [CLZ Movies for Android](#)

Sync with CLZ Cloud

You can sync your collection from your Windows / Mac computer to CLZ Comics for iPhone / iPad / Android via CLZ Cloud.

Instructions can be found in our CLZ Comics manual:

- [I have an iPhone / iPad](#)
- [I have an Android mobile device](#)

Exporting with Wi-Fi / USB



We do not recommend using WiFi or USB export from Comic Collector, we recommend using [CLZ Cloud syncing](#).

You can sync your collection from your Windows / Mac computer to CLZ Comics for iPhone / iPad / Android via your home WiFi network, or by creating a file and putting that file on your mobile device (USB).

Instructions can be found in our CLZ Comics manual:

- [I have an iPhone / iPad](#)
- [I have an Android mobile device](#)

CLZ Comics for iOS

Please find all instructions on how to export your comic collection to your iPhone / iPad (and everything else regarding CLZ Comics) on our dedicated manual page:

- [Manual for CLZ Comics for iOS](#)

CLZ Comics for Android

Please find all instructions on how to export your comic collection to your Android device (and everything else regarding CLZ Comics) on our dedicated manual page:

- [Manual for CLZ Comics for Android](#)

Subscriptions and Updates

- [Subscriptions](#)
- [Unlocking the software](#)
- [Updating your software](#)
- [About Update Plans / Service Plans](#)

Subscriptions

The Collector desktop software is subscription software.

The subscription fee includes:

- all software updates
- 2nd line customer support
- access to the following CLZ online services:
 - the CLZ Core online database (to get automatic details and cover images)
 - the CLZ Cloud storage (for backups, sharing and syncing to other devices)
 - the Find Cover Online service

A subscription can be used on ONE PC or Mac.

(for a multiple computer solution, consider our Connect web-based software)

Subscriptions can be purchased / renewed through the [secure CLZ shop at shop.clz.com](https://shop.clz.com).

Two payment options are available:

- Pay monthly, for US \$2.95 per month (auto-renewing)
- Pay yearly, for US \$29.95 per year

Unlocking the software

Here's how to install and unlock your software:

Installing the software

(if you are already running the trial edition, you can skip these steps)

1. Download the full installer from your account at my.clz.com.
After downloading, run the installer to install the program on your computer.
2. Start the program:
On Windows: Choose Start / Programs / Collectorz.com, then select the program icon.
On macOS: Open your Applications folder and click the program icon.

Unlocking the software

Here's how to unlock the trial edition into the full software:

1. Start your Collectorz.com program.
2. A 'Trial Edition' screen will appear.
3. At the bottom of this screen, click the Unlock Software button.
Alternatively, if you have already clicked Continue, choose Unlock Software from the Buy menu.
4. The My CLZ Account screen will open.
At the top of the screen, enter your CLZ Username (or email address) and your CLZ Password, then click the Login button. Note: you do not need to enter your license key!
5. The program will now connect to the Collectorz.com server to validate your License and Subscription.
6. That's it. Your software has now been unlocked for use and you're all set!



Don't remember the password of your CLZ Account?
You can request a new password on the my.clz.com website.

Can't find the Unlock option?

If you don't get the Trial Edition screen or don't see a Buy menu, that probably means your software is already unlocked. To verify this, click on menu "*Tools > My CLZ Account*".

Does this mean that I always need to be online to use the software?

No, you can still use the software without being online. The program only needs to be online **once**, to let it validate your License and the expiry date of your Subscription.

When that's done and you restart the program later, it will **try** to get the latest License info, Expiry Date and

Latest Version from our server. This way it can automatically detect changes, e.g. if your Subscription was renewed/extended. This is also used to notify you of a newer version being available.

If at startup, your computer is **not online**, the program will stick to the License, Expiry Date and Latest Version Number that was downloaded last time it was able to do an online check. So if you're not online after the initial check, your program will behave as normal.

What data is being sent when the program connects to CLZ servers?

When the program connects to get the License, Expiry Date and Latest Version Number, it only sends the information the server needs to return the correct data:

- Product (which program you're using)
- Platform (Windows or macOS)
- your CLZ Username and Password (both encrypted)
- your current version number.

Updating your software

Our programs for Windows and macOS are under continuous development and new software versions are being released on a regular basis. These new versions bring new features, improvements to existing functionality, bug fixes, compatibility updates and security updates.

We recommend to always use the latest version of your software!

Here's how to update to the latest version:

- for Windows: start your existing software, then from the menu choose "*Help > Check for Update...*"
- for macOS: start your existing software, then from the menu choose "*Comic Collector > Check for Updates...*"

Valid Subscription required!

Important: To update your software you need a valid Subscription.

If your Subscription has expired, you need to renew it first, through the [secure CLZ shop at shop.clz.com](https://shop.clz.com).

About Update Plans / Service Plans

Subscriptions for the desktop software were previously called “Update Plans” or “Service Plans”.

On Feb 12, 2019 the desktop software has become subscription software, and the new “Subscriptions” replaced the old “Update Plans” / “Service Plans”

For **new** customers, who purchased **after** Feb 12, 2019, a Subscription is necessary to access the following CLZ services:

- the CLZ Core online database (to get information and images)
- the CLZ Cloud storage (for backups, sharing and syncing to other devices)
- the Find Cover Online service
- software updates (new features, improvements and maintenance builds)
- second line tech support

Grandfathering of the old policy

Don't worry: if your original Update Plan was started **before** Feb 12, 2019, you will be “grandfathered” on the old policy. In that case, your Core, Cloud and Find Cover functionality will always keep working, whether you have an active subscription or not.

Still you **do** need an active Subscription to get access to:

- Software updates
- 2nd line customer support.
- any new “premium” CLZ online services introduced after Feb 12, 2019, for example:
 - Getting IMDb Rating and Votes and Adding Movies from IMDb, in Movie Collector
 - Getting comic pricing from GoCollect, in Comic Collector
 - Adding Hardware from Core and Adding Games by Platform, in Game Collector

Also, by keeping your Subscription active, you are supporting the development and maintenance of the CLZ online services (Core, Cloud, Find Cover, etc..).

Troubleshooting

- [Connection problems](#)
- [Export to CLZ Comics: "Device not found"](#)
- [CLZ Cloud Sync problems](#)
- [Warnings and Error Messages](#)
- [Error during installation / updating](#)

Connection problems

If you have any kind of connection problems (e.g. no results in the Add Automatically screen), your best bet is to take a look at your firewall and/or router.

- [Possible issues](#)
- [Things you can try](#)
- [Still having connection issues](#)

Possible issues:

Comic Collector can't connect after first install on a new computer:

Please check your firewall/router using the information under "[Things you can try](#)".

Comic Collector couldn't connect after I updated it to a new version (it worked before):

Firewalls can not detect program version changes. This means that if a program has changed after updating it to a new version, you may need to tell the firewall to allow it access **again** – even if you had already done so.

Comic Collector can't connect, but my other Collectorz.com software can:

Note that Firewalls can block **per program** so it doesn't matter to your Firewall if any Collectorz.com software works, but Comic Collector doesn't. Please check your firewall/router using the information under "[Things you can try](#)".

[Back to Contents](#)

About Firewalls and Routers in general:

A firewall is software on your computer which can prevent that programs access the Internet. Firewalls can block per program, so even if you can visit websites, Comic Collector may still be blocked.

A (wireless) router is a device that gives you a (often wireless) Internet connection for your PC or Mac. They usually have built in Firewalls that can block software from making a connection to the Internet. .

There are many different Firewall programs. Most of Firewalls nowadays come integrated in what is called "Internet Security" software. Such software contains antivirus software, anti spam programs, and firewall software, all-in-one. Well known packages are : Norton Internet Security, McAfee, Zone Alarm, Kaspersky, Etrust and Panda. All of these packages come in different versions (with different features/or they're older/newer versions).

It's important that you change their settings to allow Collectorz.com software onto the Internet.

It's important to know that firewalls can block each program on your computer separately, not just websites

you are trying to access. This means that if you allow Comic Collector access but not a different Collectorz.com program, the first will work and the second won't.

It's also possible that your web-browser is allowed Internet access by default, which is why that does work, even when Comic Collector does not.

[Back to Contents](#)

Things you can try:

- Check that your computer is online. Start your web browser and enter a web address like `www.google.com`
- Comic Collector has a built-in button to Check the Connection, you can find it top right of the Add Automatically screen. It's a "signal" icon. When you click on it, the message should read 'Connection OK'. If the message indicates 'No connection is allowed', check your firewall settings.
- Check your firewall, it should not be blocking Comic Collector from accessing the Internet. This can occur especially after installing a new version of your Comic Collector. In that case, change your firewall configuration to allow Internet access again.
- Get your firewall to ask for new rules for Comic Collector by removing its reference in the program list of your firewall. Once done, start up your Comic Collector, which should make the firewall prompt you to set a new rule.
- Disable your firewall. If that doesn't help, uninstall it. Some firewalls are known to interfere with Internet access even when they are disabled.
- Check that you have no invalid proxy settings. To check these settings, select Tools | Options on the menu, then select the 'Check for Update' tab, and press the 'Proxy Info' button. Clear all fields in the Proxy Settings screen.

[Back to Contents](#)

Still having connection issues:

If none of the above helped you locate and fix the problem, the best thing to try is contact the developer of your Firewall/Router or the company you bought the PC/Mac to see if they can send you instructions on how to allow a program like Comic Collector to be allowed full connection to the Internet.

Export to CLZ Comics: “Device not found”

If you can't find your mobile device running CLZ Comics using the “File > Export to > CLZ Mobile” with WiFi, there's a few possible causes you can check to making it work:

Contents

1. [Make sure you have Bonjour installed](#)
2. [CLZ Comics is not on the import page](#)
3. [Your WiFi may be disabled or automatically disconnected](#)
4. [Firewall software is blocking the connection](#)
5. [WiFi Router problems](#)
6. [Device is not on the same “subnet” as your computer](#)
7. [Alternatives to WiFi export](#)

1. Make sure you have Bonjour installed

If you have Windows and you want to export to CLZ Comics, you need to have “Bonjour” installed in order for your Windows computer to talk with CLZ Comics. The program basically connects CLZ Comics to Comic Collector

- If you have iTunes installed on your computer, you have Bonjour installed too.
- If you don't know if you have Bonjour installed, please [download Bonjour](#) and install it, then try exporting via WiFi again.

You can also try to restart Bonjour if you're on Windows:

1. Click the “Start” button located at the bottom of the desktop screen and type “Services” in the search field above the Start button.
2. Click the “Services” tab in the Programs section of the pop-up menu to run the Services tool.
3. Right-click on “Bonjour Service” and select “Restart” on the shortcut menu.

If you're on Mac, you don't have to try to restart Bonjour.

2. CLZ Comics is not on the import page

Make sure CLZ Comics app is actually on the import page. To reach the import page:

- Tap the menu, then “Maintenance”, then “Old Import from Comic Collector”

Unstable WiFi connection: Move closer to your WiFi access point.

3. Your WiFi may be disabled or automatically disconnected

After a few minutes your mobile device could become idle and disable its WiFi automatically). To fix this, go to your mobile device preferences screen and in “General” or “Wifi” “Settings” switch off “Auto Lock” – or something similar that locks your device after a few seconds (or even minutes).

4. Firewall software is blocking the connection

Make sure that your Collectorz.com software is allowed to connect “through” your firewall. Any new (updated) version of Comic Collector can actually cause your firewall to start blocking the connection.

Try switching off all firewalls, and be sure not to forget the Windows firewall. Also disable Windows Defender if you are on Vista, Windows 7 or Windows 8

5. WiFi Router problems

If the above suggestions didn't do anything for you the problem is most likely caused by your router.

First, try powercycling the router (disconnect it from power, wait 10 seconds, then reconnect).

If that doesn't help, check if the manufacturer has any firmware updates available for your router. Updating the firmware to the latest version could also resolve connection problems.

Please keep in mind that any new (updated) version of Comic Collector can actually cause your router (or router's internal firewall) to start blocking the connection.

6. Device is not on the same “subnet” as your computer

The device (iOS/Android) needs to be on the same home network, and the same subnet as your computer. To find out if they are, follow the steps below:

iPhone, iPod touch, iPad

1. On your iPhone or iPod touch go to Settings
2. Choose Wi-Fi
3. There you see your network with a check in front of it, tap on the blue arrow on the right
4. On this screen you see your IP Address and the subnet Mask of your device

Android

1. On your Android go to Settings
2. Choose Wi-Fi Settings
3. There you see your network (where it says “Connected”), tap it once
4. On this popup or screen you will see your IP Address.

Windows:

1. On your computer, press Windows Key + R (Or go to start, choose run)
2. Typ "cmd /k ipconfig /all"
3. On this screen you see your IP Address and the subnet Mask of your computer

Mac OS X:

1. On your Mac, click the Apple logo top left of your screen and select "System Preferences"
2. Click on the Network icon.
3. Select your Internet Connection from the list. You have to be sure which one you are using
4. Click "Advanced"
5. Select the TCP/IP tab
6. On this screen you see your IP Address and the subnet Mask of your Mac

Comparing the address/subnet of iOS/Android versus the address/subnet of Windows/Mac

The IP address of your device and computer should almost be the same. Your IP address will consist of 4 groups of numbers. Example:

Computer IP address: **192.168.1*.102** and mobile device IP address: 192.168.1*.108

As long as the first 3 groups of numbers (in this case "192.168.1") are the same, you can assume you are on the same network. If this is not the case, your mobile device is on a different network than your computer! Fix this and the WiFi export should start working.

7. Alternatives to WiFi export

Alternatively to WiFi export you can use:

- Export to File (it's located in the same screen). Then put the file on your mobile device and import like that.
- Recommended: Sync via CLZ Cloud

When refreshing the device list, I get “Unable to initialize Bonjour”.

We suggest that you use [CLZ Cloud syncing](#) when you want to send your collection to your mobile app.

If you do not want this, then please check out [this troubleshooter for “Direct Export”](#).

CLZ Cloud Sync problems

Pick the item you wish to know more about:

- [Different number of movies in desktop, cloud and app](#)
- [Error: Database synced with different CLZ Account](#)
- [Error: Cleared collection in CLZ Cloud](#)
- [Error: Different database than the one in CLZ Cloud](#)
- [Errors in Sync Report](#)
- [SYNC FAILED: The old CLZ Cloud Sync system has been discontinued](#)

Different number of comics in desktop, cloud and app

In some rare situations, your desktop, cloud and mobile app database can get “out-of-sync”, causing a different number of comics to be listed.

The solution is simple, but may take some time. In short:

1. **Clear** your CLZ Cloud.
2. Upload your most up-to-date database **to** the CLZ Cloud
3. On all OTHER computers and mobile devices: **re-download** the data **from** the CLZ Cloud

Step 1: Clear your CLZ Cloud

1. Go to your [CLZ Cloud page](#) and **log in**.
2. Click the menu button top left and choose Maintenance, then “Clear Database”

Step 2: Upload your most up-to-date database to the CLZ Cloud

Open the desktop program or mobile app that has your **most up-to-date database** and use **Sync with CLZ Cloud** to upload that database to the CLZ Cloud.

For most users, we recommend uploading from the desktop software, as that is most likely to have the most complete copy of your database.

Step 3. On all OTHER computers and mobile devices: re-download the data from the CLZ Cloud

Do the following on all your OTHER devices and computers to download the new CLZ Cloud data:

In the CLZ mobile apps:

- tap the menu top left, and choose “**Clear Database**”.
- tap the menu top left and choose “Sync with CLZ Cloud”

In the desktop software:

- use File / New Database to start a new database, save it under a NEW filename.
- choose Synchronize from the CLZ Cloud menu.

Error: Database synced with different CLZ Account

The database you're trying to sync with CLZ Cloud has been synced before, but to a **different** CLZ Account. This can happen if you have more than one CLZ Account with us.

Solution 1: Login with the correct CLZ Account

Windows / Mac desktop software

1. Close the "Synchronize with CLZ Cloud" screen.
2. Click menu "**Tools > My CLZ Account**".
3. Login with the correct CLZ Account that you previously used to sync this specific database with.

iOS / Android mobile device

1. Close the sync screen.
2. Go to the settings of the mobile app.
3. Open CLZ Account login details and login with the correct CLZ Account that you previously used to sync this specific database with.

Solution 2: Clear your CLZ Cloud data

Alternatively to solution 1, you could also clear the database out of the CLZ Cloud and then perform the sync once again. Here's how:

1. Go to your [CLZ Cloud page](#) and **log in**.
2. Click the menu button top left and choose "Clear Database"
3. Go back to your mobile app and try syncing once again.

Error: Cleared collection in CLZ Cloud

It seems you cleared your collection in CLZ Cloud, meaning you have logged into your CLZ Cloud and used the red button named **“Remove all comics from database”**.

You will be presented with the option to “Upload this database” meaning you are about to upload your entire comics database from your local computer or mobile device up into CLZ Cloud.

If you would like to continue you need to **“Upload this database”**.

Error: Different database than the one in CLZ Cloud

The database you're trying to sync with CLZ Cloud is a completely different one than we have in the CLZ Cloud. Perhaps you have opened a different database file?

Solution 1: Open the correct database

Open the same database that we have in [CLZ Cloud](#) for you. To verify, login to [CLZ Cloud](#) and check which database is in there.

1. Close the "Synchronize with CLZ Cloud" screen.
2. Click menu "**File > Open Database**".
3. Open the database that is the same as the one in the CLZ Cloud.
4. Try syncing again.

Solution 2: Clear your CLZ Cloud data

It could happen that you do not have that same database anymore, or for any reason at all you now wish to sync this database you have in front of you instead of the one in CLZ Cloud.

So, alternatively to solution 1, you could also clear the database out of the CLZ Cloud and then perform the sync once again. Here's how:

1. Go to your [CLZ Cloud page](#) and **log in**.
2. Click the menu button top left and choose "Clear Database"
3. Go back to your the program/app and try syncing once again.

Errors in Sync Report

It can happen that something goes wrong during sync. If that happens, you will be notified, and you can check here what the error means:

- [Error downloading/uploading cover](#)
- [Other Messages](#)
- [Clear database in CLZ Cloud](#)

Error downloading/uploading cover:

A cover (or more than 1 cover) didn't download or upload correctly.
Restart the CLZ Cloud sync to try again!

“Error Uploading cover” keeps coming back

If you keep getting the **error uploading** for the same cover every time you sync, and you have a stable internet connection, it could be that the cover image is corrupt.

Find the actual cover for that comic on your PC/Mac or iOS/Android mobile device and see if it's actually there:

- If the image seems bad, remove the image and add a new image to the comic
- If it seems fine and it keeps failing, it might be too big or corrupt (but you can't actually see it's corrupt). Try to remove the image and add a new image to the comic.

Other messages:

If you get any error messages, restarting the CLZ Cloud sync will usually do the trick, so always try that first!

This database was exported directly from Comic Collector and can not be synced with CLZ Cloud.

To enable CLZ Cloud 2.0 syncing please empty your database on your mobile device first using “**Settings > Empty Database**”.

There are no changes to be synchronized with CLZ Cloud.

No changes were found between your local database and your database in CLZ Cloud.

If, however, you are sure it should be syncing, you could opt to clear your DB in CLZ Cloud (this forces an upsync from any device/pc up into the CLZ Cloud).

Clear database in CLZ Cloud

Here's how you can, if you want, clear your database in CLZ Cloud:

1. Go to your [CLZ Cloud page](#) and **log in**.
2. Click the menu button top left and choose “Clear Database”
3. Now try syncing once again. .

SYNC FAILED: The old CLZ Cloud Sync system has been discontinued

Since July 1, 2017, the old CLZ Cloud Syncing system has been discontinued. You now need Comic Collector version 15 or later to sync with the CLZ Cloud.

If you are running into the above “SYNC FAILED” error, that means you will have to upgrade your Comic Collector software to the latest version.

You can [purchase the upgrade in our CLZ Shop](#).

Why has the old CLZ Cloud syncing been discontinued?

In April 2015, with version 15 of our Comic Collector software, we introduced our **new** CLZ Cloud Syncing 2.0 system, which is easier to use, faster, more efficient and better capable of syncing large collections. In the meantime, most users have moved to the new system and are enjoying simpler and faster cloud syncing.

However, a considerable group of pre-v15 users was still using the old-skool syncing. This was causing a disproportionately high load on our servers, causing regular performance problems, also for users who paid to upgrade to the **new** system.

On top of that, it was becoming harder and harder to keep the old syncing system up-and-running, slowing down our development in other areas.

All in all, this has led to the decision to discontinue the **old** CLZ Cloud Syncing method.

CLZ Cloud is here to stay!

Don't worry, the CLZ Cloud itself is not being discontinued. It is the center of all our cataloging tools, so it is here to stay, and still completely free.

It is only the old cloud **Syncing System** that is being discontinued. So to keep syncing with the CLZ Cloud, you need a software version that uses the **new** syncing system. For the desktop version of Comic Collector, that means v15 or newer.

Do I also need to update my CLZ Comics mobile app?

Yes, for the CLZ Comics you also need a version that supports the **new** syncing method, which means CLZ Comics version 3 or later. However, since updates for the mobile apps are free, it is likely that you are already running the latest version there.

Warnings and Error Messages

- [“Failed to open database. Your license key is already in use”.](#)

“Failed to open database. Your license key is already in use”.

The most common reason this message can appear is if you have copied your data from one computer to another recently. It can also happen if the program wasn't closed correctly.

Here's what to do:

1. Close down the program.
2. Open the location of your database file (usually Documents > Comic Collector)
3. Find the file that has the same name as the database, but with an extension ending in “lck”
4. It is called “YOURDATABASE.cmclck
5. Remove that file!
6. Now start up the program again, the warning message should no longer come up.

The other reason the warning can come up is if are trying to open the same database from more than one computer (concurrently) over a network using one and the same license key. This is not allowed, and you will in this case require additional licenses which you can purchase via our online shop.

Error during installation / updating

If you've received an error during a fresh installation or updating Comic Collector, you may be able to find a solution below:

- [MoveFile failed; code 183](#)
- [System Error. Code: 2. The system cannot find the file specified](#)
- [System Error. Code: 5. Access is denied](#)
- [Cannot open file: jquery.code.v2.js" The system could not find the path specified](#)
- [After updating I get "Call to OS Function Failed" or "Cannot Create..." error](#)

MoveFile failed; code 183



An error occurred while trying to rename a file in the destination directory: MoveFile failed; code 183. Cannot create a file when that file already exists.

The above error can be caused by **an older version of Malwarebytes** ransomware protection. It is blocking the update and then removes the executable that is needed to run Comic Collector.

If you do not have Malwarebytes, you can still try the solution below:

Quick solution:

The quickest solution for now is to download a new installer from [your CLZ Account](#) and reinstall.

For the future:

Make sure you've downloaded the latest version of Malwarebytes. The problem and blockade should not happen in the latest version of Malwarebytes!

Don't have Malwarebytes?

1. Download a new installer from [your CLZ Account](#) and save it to your computer.
2. Right click the installer and click "Run as administrator"

System Error. Code: 2. The system cannot find the file specified

This error usually pops up when Comic Collector doesn't have enough rights to access certain files, however it can also happen if you use some kind of data sync program such as Google Drive, OneDrive, iDrive or something similar.

It might be a “rights” problem

To try and fix this problem please reinstall { software with Admin Rights. Here's what to do:

1. Download your Collectorz software again from your [CLZ Account page](#).
2. Click the download button for your platform and download the version you're entitled to, save it to your computer (do not run the installer).
3. Right click on the downloaded installer, and select 'Run as Administrator'.
4. This will install the program with Administrative rights.
5. Now launch the program and see if the problem has been resolved.

Google Drive, OneDrive, Dropbox is in the way

If you use Google Drive, OneDrive, Dropbox or something similar, try and **exclude the Comic Collector folder in Documents** from syncing with Google Drive (or similar).

System Error. Code: 5. Access is denied

This error usually indicates the (older version of the) program was still open at some point while installing or downloading. It can also mean Google Drive, OneDrive, Dropbox or other software is currently taking a folder or file that Comic Collector uses “hostage”. Here are some things you can try:

Google Drive, OneDrive, Dropbox is in the way

If you use Google Drive, OneDrive, Dropbox or something similar, try and **exclude the Comic Collector folder in Documents** from syncing with Google Drive (or similar).

The older version was still open while installing

If this was the case (this may have happened without you noticing), the fix is to uninstall the current version of the software and then re-install using the instructions below.

1. Shut down the computer.
This is essential as it will close any open Comic Collector instances.
2. Start the computer again.
3. Uninstall the program by clicking Start (Windows button) > Collectorz.com > Uninstall Comic Collector
4. Reinstall the program from your [My CLZ page](#)

The above steps will not affect your database, your database will just open normally after uninstalling and reinstalling the program.

Cannot open file: jquery.code.v2.js” The system could not find the path specified



Cannot open file: “C:\Program Files (x86)\Collectorz.com\Movie Collector\Templates\V18\jquery.code.v2.js”. The system could not find the path specified

If you're getting this error message, it likely means the latest installation or update wasn't able to install the jquery file correctly. Here's what to do:

1. Close the program.
2. Restart the computer (do not skip this step please!!!)
3. Go to this folder:
C:\Program Files (x86)\Collectorz.com\Comic Collector\
4. Rename the folder called “Templates” to “Templates OLD”.
5. Reinstall your program by [redownloading it your CLZ Account](#).

After updating I get “Call to OS Function Failed” or “Cannot Create...” error

It sometimes happens that errors like these pop up after updating the software or after upgrading your Windows on your computer.

- Call to an OS Function Failed
- Cannot create “filename.xml” (or something similar)

If this happens to you, there are a couple things you can try:

1. Restart your computer and restart the program

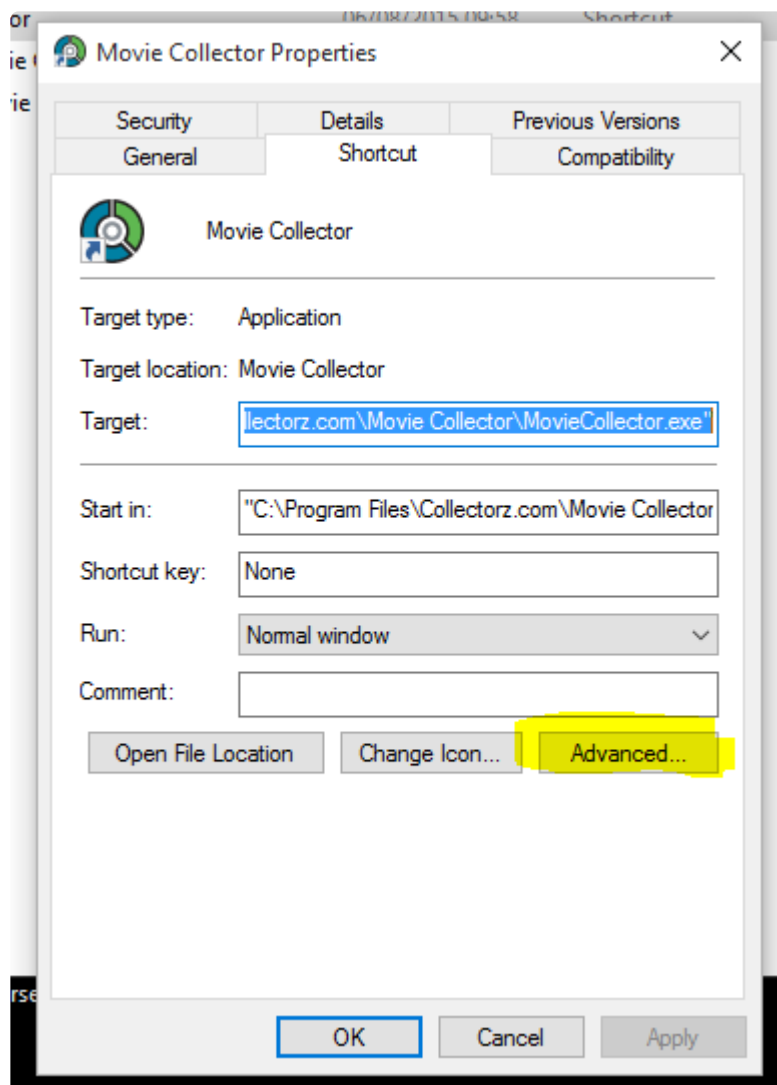
Sounds simple, but does help sometimes.

2. Reinstall the program “As an Administrator”

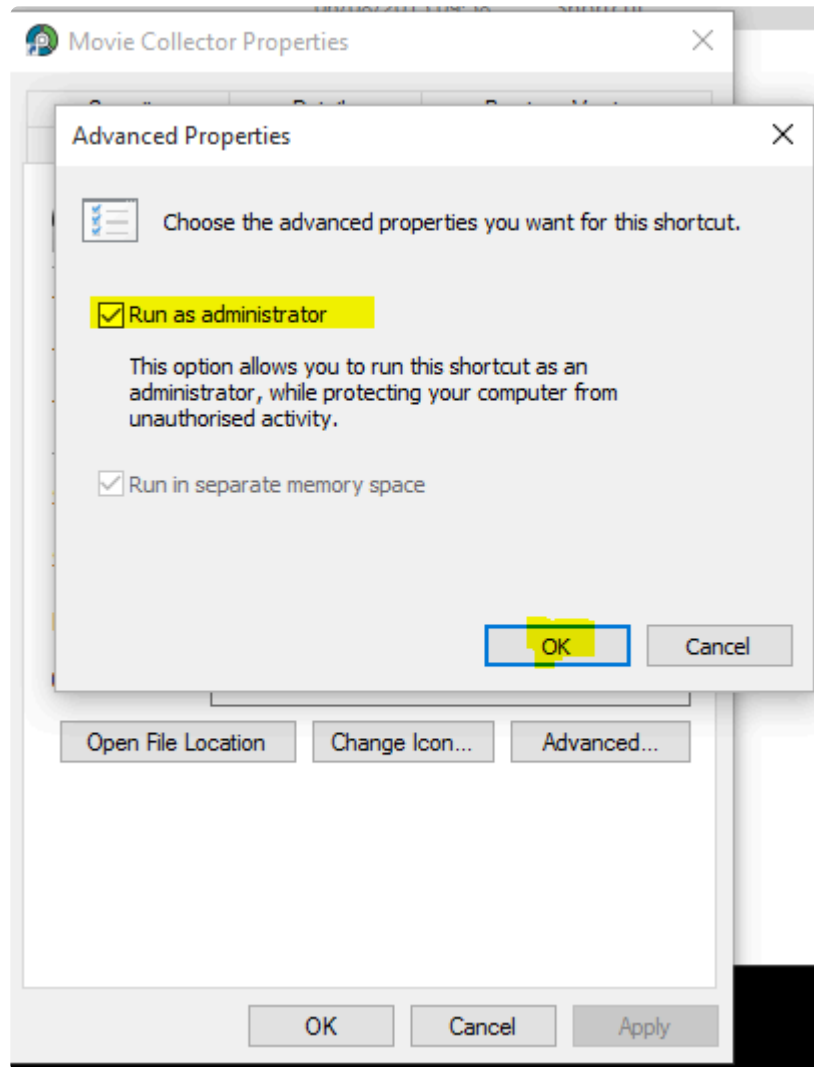
1. Download your Collectorz software again from your [CLZ Account page](#).
2. Click the download button for your platform and download the version you’re entitled to, save it to your computer (do not run the installer).
3. Right click on the downloaded installer, and select ‘Run as Administrator’.
4. This will install the program with Administrative rights.
5. Now launch the program and see if the problem has been resolved.

3. Run the program “As an Administrator”

1. Close the program if it’s open.
2. Right click the shortcut to your Collectorz program and then select “Properties”.
3. Click the Shortcut tab.
4. There, click the Advanced button:



- Tick the “Run as Administrator” box:



- Click OK and you're done.

4. Check the folder mentioned in the error to see if it is “Read Only” or “Hidden”

1. The “Cannot create..” error usually mentions a filepath. Take note of this filepath.
2. Go to the folder of that file, right click it and select “Properties”.
3. Make sure the folder is not “Read Only” – and make sure it is not “Hidden”. (checkboxes can be found there).

Frequently Asked Questions

- [Your database and images](#)
- [License / Service Plan questions](#)
- [Syncing with CLZ Cloud / Connect](#)

Your database and images

- [My series are not sorted correctly?](#)
- [Some series are duplicated / split up?](#)
- [Download from CLZ Cloud is disabled: "Upload New Fields First"](#)
- [How do I transfer the program, my database and images to another computer?](#)
- [I do not see my data any more.](#)
- [I do not see my images anymore.](#)
- [Can I change the field value for multiple items in one go?](#)
- [Move all userdata and images to a new location](#)

My series are not sorted correctly?

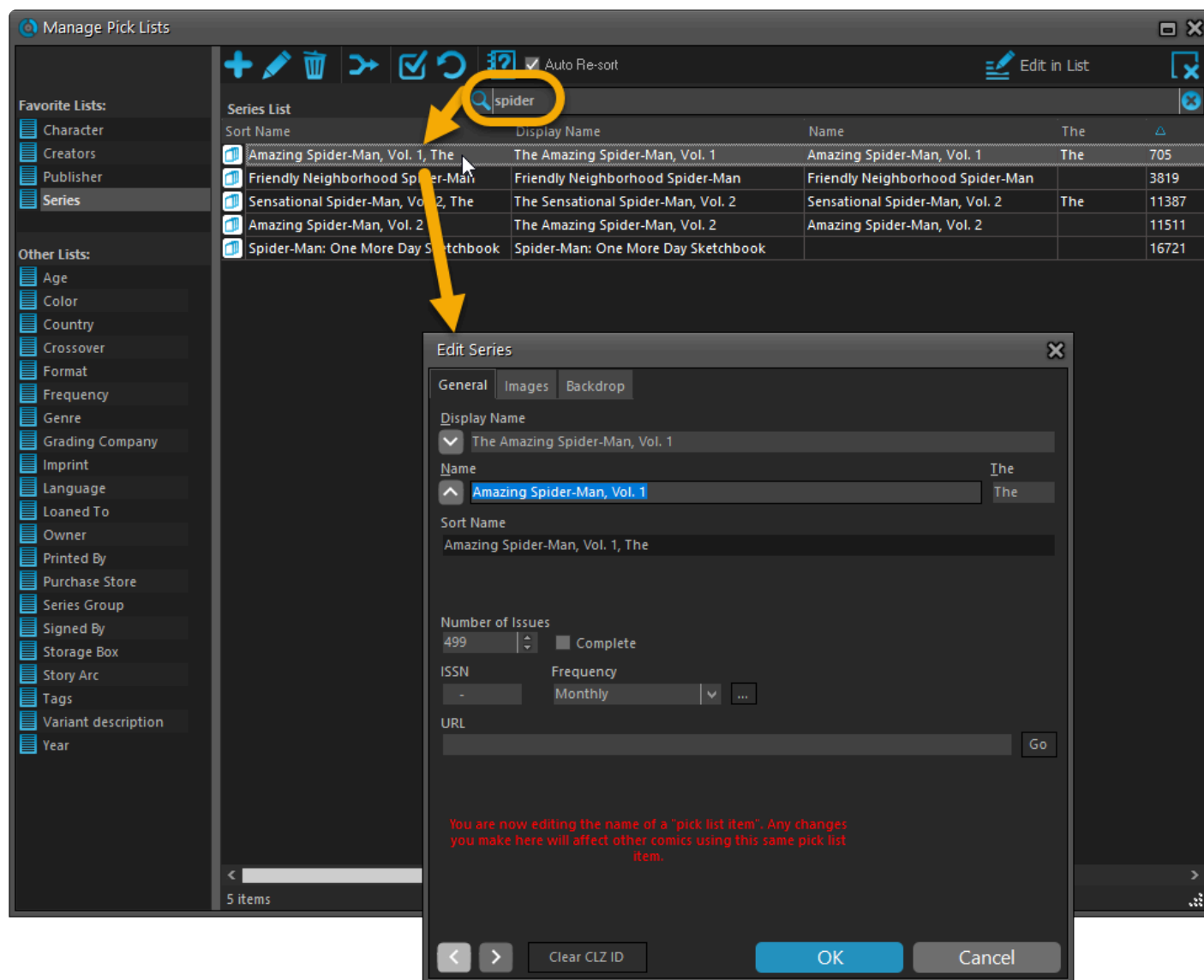
If you find that your series list is not sorted correctly, that is most likely to be caused by incorrect series **sort names**.

The easiest way to check and correct series sort names is through the Manage Pick Lists screen.

To open that screen, click menu *Edit*, then choose *Manage Pick Lists*.

On the left side, click “*Series*”. That will show you your complete series list, with Sort Names, Display Names and more.

1. Double click on a series to edit it
2. Now fill in the **Name** field accordingly
3. The sort name will be generated automatically based on the Name field
4. Verify the sort name field is now correctly filled in



✿ Use the special Sort Name options in the “*Tools > Options > Sorting / AutoCap / Index*” screen if you prefer to **show Sort Names** for series everywhere (makes your sorted list a bit easier on the eye), or if you want to **ignore Sort Names** altogether (that is, you prefer to sort by the series display names).

If you are having any other sort issues, please find our complete manual on sorting here:

[Sorting your collection](#)

Some series are duplicated / split up?

Sometimes you may find that some series folders have duplicated, with their comics list split up between two separate folders for the same series.

This may happen when different comics in our Core had slightly different spellings of the series name.

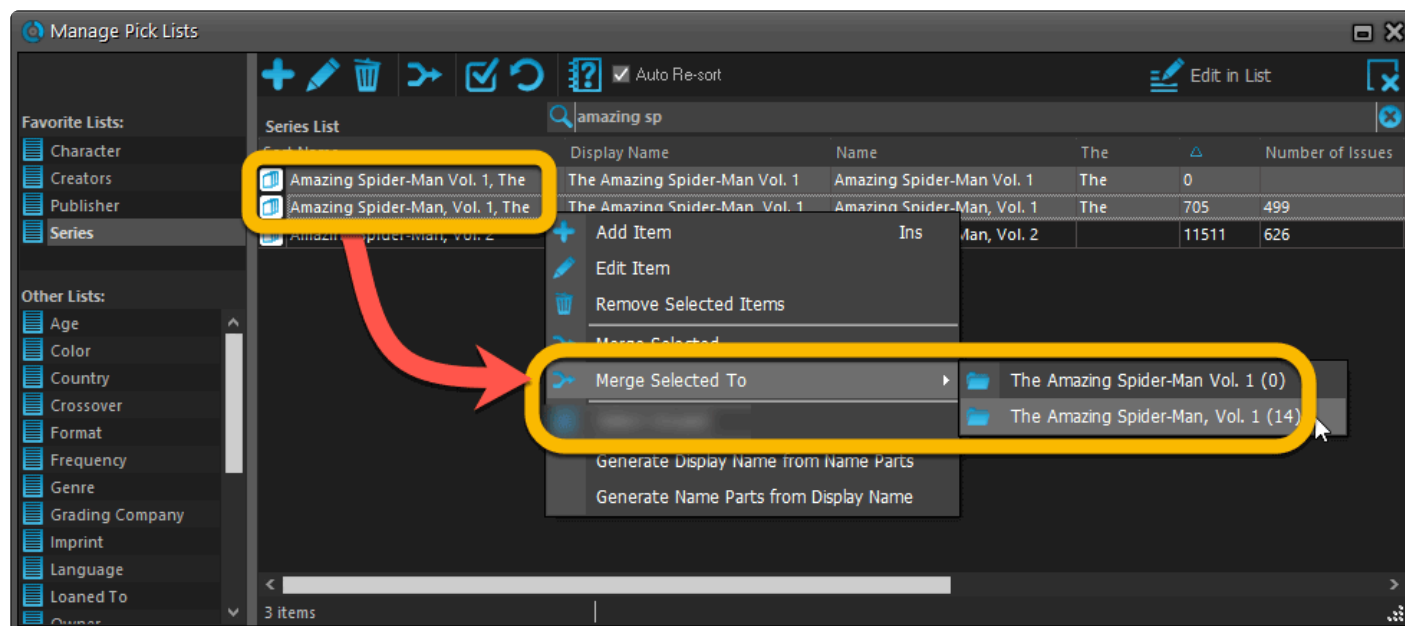
Luckily, this duplicate series problem can be resolved easily by **merging** the entries through the Manage Pick Lists screen.

To open that screen, click menu *Edit*, then choose *Manage Pick Lists*.

On the left side, click “series”. That will show you your complete author list, with Sort Names, Display Names and more.

Now:

- Find the duplicate series using the search box top right
- **Select** the duplicate series (hold CTRL/CMD and click them)
- Finally, **right click on the selection** and go to “Merge Selected To”, and select the series entry you want to merge to, that is, the one you want to keep.
(in most cases, that would be the one that lists the most comics)



Download from CLZ Cloud is disabled: “Upload New Fields First”

To get rid of this message in Comic Collector, you need to upload to CLZ Cloud first:

1. Open the CLZ Cloud sync screen in Comic Collector via menu “CLZ Cloud > Synchronize”
2. Click “Upload to CLZ Cloud”
3. Uncheck all Removals, Additions and Updates (so you have “0 out of 0” on all three).
4. Click “Upload to CLZ Cloud”

After uploading to CLZ Cloud following the steps above, the “Download From CLZ Cloud” will be enabled again.

How do I transfer the program, my database and images to another computer?

I'm transferring my program, data and images from...

- [Windows to Windows](#)
- [macOS to macOS](#)
- [macOS to Windows](#)

Windows to Windows

Follow the steps below to transfer your program, your database and your images from the old computer to the new computer.

1. Install Comic Collector on the new computer

- Download your latest version of Comic Collector from your [My CLZ account](#).
- Install Comic Collector on the new computer.
- Unlock Comic Collector with your My CLZ username and password.

2. Copy the “Comic Collector” folder in “Documents” to your new computer

You need to copy the Comic Collector folder from your Documents folder on the old computer to the Documents folder on the new computer.

- **Important:** Old computer: Close Comic Collector if it's open.
- Old computer: Go to your “Documents” folder and find a folder called “Comic Collector”.
- Copy this folder to a USB stick, or burn it to a CD, or transfer it over your Network to your new computer.

! If you have saved your Comic Collector database file (*.CMC) somewhere else, you need to find and copy it separately.
You will be looking for a file with the extension: *.CMC

3. Place the “Comic Collector” folder in “Documents” on your new computer

- **Important:** New computer: Close Comic Collector if it's open.
- Go to your “Documents” folder and place the copied “Comic Collector” folder here.
(also place your database file here if it was stored separately on your old computer).
- If you're asked if you would like to replace files, answer with YES.

* On your new computer, you should now have one folder called “Comic Collector” in your “Documents” folder.
If by accident you now have a folder called “Comic Collector – copy”, move all the files into the “Comic Collector” folder.

4. Start the program and open your database

- New computer: Start Comic Collector
- Use menu “File > Open Database” and open your Comic Collector database file.
- If you can't find the file, it should be in your “Documents > Comic Collector” folder and it has an

*.CMC extension.

5. Optional: Fix your cover images automatically

If you don't see your cover images right away, it could be that the filepaths to your image/other files are broken. Use the “[Tools > Maintenance > Update File Links](#)” screen to fix this.

macOS to macOS

Follow the steps below to transfer your program, your database and your images from the old computer to the new Mac.

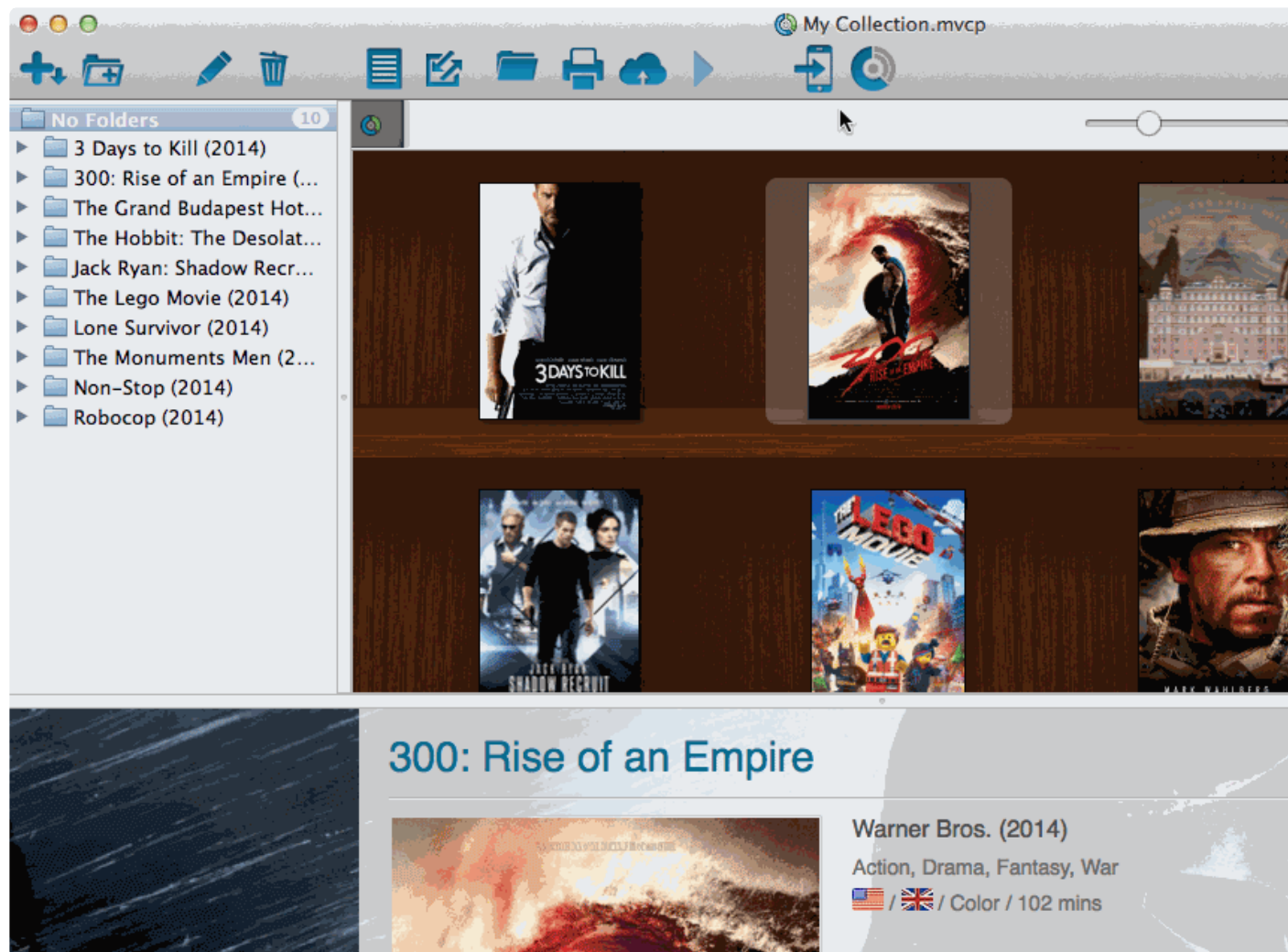
1. Install Comic Collector on the new Mac

- Download your latest version of Comic Collector from your [My CLZ account](#).
- Load the DMG file and install Comic Collector on the new computer.
- Unlock Comic Collector with your My CLZ username and password.

2. Find your database file on your old Mac

You need to copy the Comic Collector database file from your old Mac to your new Mac.

- Open Comic Collector
- Now right-click (or hold CTRL and left-click) on the title of your database.
- Now left-click on the “folder” right below your database name to open the folder where your *.CMCP database file resides.



- Copy the *.CMCP database file to a USB stick, or burn it to a CD, or transfer it over your Network to your new computer.

* By default, images are stored inside this *.CMCP database file.
If you've set the program to store the images "externally", you have to copy your images folder to the new Mac too.

3. Place the "Comic Collector" *.CMCP database file on your new Mac

- Place the *.CMCP database file in your Documents folder.
- Start Comic Collector
- Click on menu "File > Open Database" and go to your "Documents" folder to open your *.CMCP database file.

That's it, you've successfully moved everything to your new Mac.

4. Optional: Fix your cover images automatically

If you were using external storage for your images, use the “Tools > Maintenance > Update File Links” screen to relink your image files.

macOS to Windows

If you've decided to move from macOS to Windows, you can bring your database with you to your new Windows computer by exporting it to XML, and importing the XML in Comic Collector on Windows.

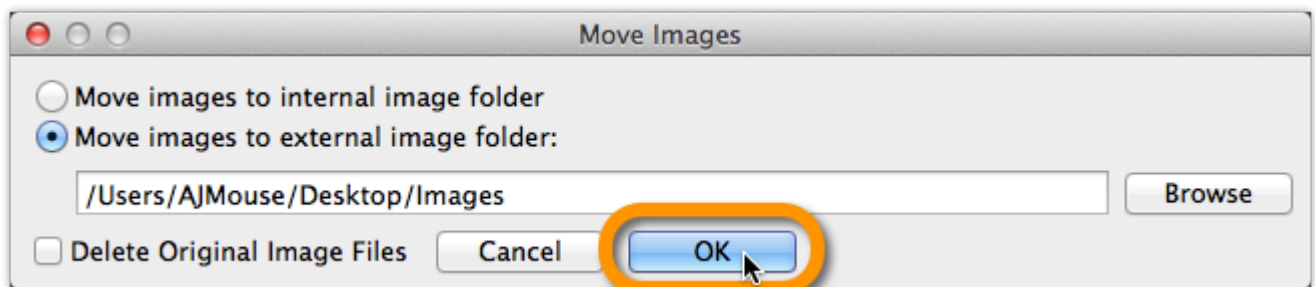
Follow the steps below to transfer your program, your database and your images from the old Mac computer to the new Windows computer.

1. On macOS: Copy your images folder and Export your data to XML

You need to get 2 items copied to your Windows computer. You need the **Images folder** and **XML file**.

A. Export your images to a folder

- Click menu "Tools > Maintenance":
- Select "Move images to external image folder",
- uncheck "Delete Original Image Files",
- then click Browse:
- Click "Create" to create a new folder and give it the name "Images". Then click "Open":
- Everything is now set. Click "OK" to start moving the images to your external "Images" folder on your Desktop:



If you were already using an external images folder, you need to copy that folder to your new Windows computer.

B. Exporting the database to an XML file

- Click menu "File > Export to > XML":
- Click "All Comics"
- Click "Browse":
- Browse to your desktop and give the XML a name (in the "File Name" box):

- Click “Save”
- Click “Export” to generate the XML:
- Copy the **Images folder** and **XML file** to a USB stick, or burn them to a CD, or transfer them over your Network to your new Windows computer.
- Place the **Images folder** and **XML file** on your new Windows computer’s “Desktop”.

2. Install Comic Collector on the new Windows computer

- Download your latest version of Comic Collector from your [My CLZ account](#).
- Run the downloaded installer and install Comic Collector on the new computer.
- Unlock Comic Collector with your My CLZ username and password.

3. Import the XML in Comic Collector on Windows

- Click File > Import from > XML:
- Click “Browse” behind “Import XML File” and select the XML file from your Desktop:

*Now click “Import”

✿ Depending on the size of your collection, this process can take a while.

4. Import your images in Comic Collector on Windows

- Move your “**Images folder**” from your Windows Desktop into your “Documents > Comic Collector folder”.
- Use the “[Tools > Maintenance > Update File Links](#)” screen to get your images into Comic Collector.

I do not see my data any more.

It is highly unlikely that your data is gone.

Upgrading to a newer version never causes you to lose any data. When you start the new version for the first time, your database will be opened as well.

If we have worked on database changes (such as new fields) the new version will also convert your database to the new database format. All of this is seamless, you don't have to do anything.

Find out where your data has gone.

- First, take a look at the screenshot below (Movie Collector Windows, but will also work for your program).
- Just below the alphabet bar, there's a number that indicates the total number of comics that are in the current collection E.g. "Total: 315 Comics".

The screenshot shows the 'Collectorz.com Movie Collector 19.4.2 - MyCollection8.mvc' window. At the top, a yellow callout bubble points to the '315 movies' count, with the text 'Check the total number of items in your collection here'. The main interface displays a list of movies, with 'Baby Driver' selected. Below the list, a detailed view of 'Baby Driver' is shown, including its cover art, title, studio (TriStar Pictures), year (2017), genre (Action, Comedy, Crime, Music, Thriller), and IMDb rating (7.7). A yellow callout bubble points to the 'Filter: [None]' status at the bottom, with the text 'Check the Filter status'.

- **Does this number match the number of items that you had in your database?** If so, your data is all there and you're experiencing a problem with a "view setting" that prevents your items from showing up in the main screen.

To fix this, try the following:

1. Maybe you have an “In Collection Status” filter active? Choose the menu **Search > In Collection Status** from the menu and make sure it is set to “All”.
2. **Windows Only:** You may have a search Filter active. To check, take a look at the bar at the bottom again, somewhere along the bar it should say “Filter: [None]”. If it says something else after “Filter:” then you have a filter active. Switch OFF the Filter by choosing **Search > Filter On/Off** from the menu.
3. If after both of the above suggestions you still don’t see your data, try the **Tools > Maintenance > Reset to Defaults** command from the menu. This command resets all View settings to the initial settings the program has when it is first installed.

The Total listing is indicating 0 items.

In case the “Total:” listing at the bottom indicates there are zero items in the database (or a number that is much lower than it should be), then it sounds like you have inadvertently opened a different database (using File > Open Database) or maybe created a new empty one (using File > New Database). In that case, you have to “Open” your own database file again.

1. Choose File > Open Database.
 2. This opens the Open collection screen, showing the files in the “Data” folder. You should see one or more files having the circular Collectorz.com icon.
 3. Your database file is probably called “my collection” or something similar, unless you named it otherwise.
 4. If you see your database file, select it and click the Open button. You should now see your entered data in the main screen again.
- If you do not see any files with a circular Collectorz.com icon, use the “Look in:” drop down to find your database folder.
 - By default, it is located in a folder like “My Documents\Movie Collector\”, but you may have decided to save your database elsewhere.
 - On the Mac the database files will by default be stored in your Documents folder. “~/Documents”

Not found your file yet?

- Use your Windows Explorer or Mac Finder to search your computer for Collectorz.com database files (see below for the correct extensions).

If you find it, just double click it and your Collectorz.com program will start and will automatically open the database. Use File > Save Database As and save it to a new location after this so you can remember where you’re putting it.

- **Extra tip for Windows users:** You may want to look in your Backup folder, that is where the program automatically saves a backup copy of your database each time it successfully opens it. Important: if you find a working database file in your Backup folder, we recommend that you use File > Save database As to save your file into the Data folder, where it belongs. Preferably using a

descriptive name and taking care not to overwrite existing database files that may be there already.

- **Extra tip for Mac Users:** To search for your files on Mac, use the built in Spotlight search (the magnifying glass in the top right corner) to search for the database. Use the extensions listed below to search. For example if you want to locate a Music Collector database, use Spotlight to search for “.mucp” (without quotation marks). This should find any and all database files that are stored on your computer.

*Collectorz.com file extensions for Windows: *

Music Collector: search for *.muc files

Movie Collector: search for *.mvc files

Book Collector: search for *.bkc files

Comic Collector: search for *.cmc files

Game Collector: search for *.gmc files

*Collectorz.com file extensions for Mac: *

Music Collector: search for *.mucp files

Movie Collector: search for *.mvcp files

Book Collector: search for *.bkcp files

Comic Collector: search for *.cmcp files

I do not see my images anymore.

Here's how images work in our software:

Images are **not** stored inside the database. The image files are stored separate from your database, in a folder on your computer (most likely in the Data/Images folder under the program's folder in Documents). The entries in your database **refer** to those image file using a full file path.

If your cover images are not shown in the program anymore, there's only **four possible causes**:

- [Cause 1: Corrupted file paths](#)
- [Cause 2: Your images have moved to a different location](#)
- [Cause 3: The program is not allowed to access your images](#)
- [Cause 4: Only the thumbnails are missing](#)

Find out which of the four possible causes made your images disappear.

To get your images visible in the program again, it is important to find out **which** of the 4 causes we are dealing with it.

Here's how:

1. Find an entry in your database that misses its' cover image.
2. Now open that entry in the Edit screen and switch to the Covers tab.
3. Now, on the Front Cover tab, do you see the cover image? If so, you are probably looking at cause #4.
4. If you do **NOT** see the cover image there, then look at the File Path listed.
5. Now use your Windows Explorer to browse to that file path and check if the image file referred to is actually there.
6. If it **IS** there, then we must be looking at cause #3.
7. If it is **NOT** there, we're dealing with either cause #1 or #2, most likely #2.

Solutions to all four possible causes:

Cause 1: The image file paths in the database have gotten corrupted.

This is very unlikely. If this did somehow happen, please contact us.

Cause 2: The images are not in their original location anymore.

Which could be the case if the user has inadvertently moved them, or deleted them.

In any case, this is not something that can be ever caused by the software itself, or even by installing an update.

Solution:

If this is your problem, find [the solution in our manual](#).

Cause 3: The program is not permitted to access your images anymore.

The paths in the database are still correct and the files are still there, but somehow the program does not have sufficient Windows permissions to access them anymore. This can sometimes happen in the first session after updating the software, especially if the images are on a network drive. Closing and restarting the program will fix that.

Other reasons can cause this too, e.g. running the program under a Windows user different from the one it was installed under.

Solution:

1. Download your program again from your [My CLZ Account](#) page.
2. Click the download button for your platform and download the version you're entitled to, save it to your computer (do not run the installer).
3. Right click on the downloaded installer, and select 'Run as Administrator'.
4. This will install the program with Administrative rights.
5. Now launch the program with admin rights (right click > run as administrator).

Cause 4: There are no problems at all, but somehow you lost the generated mini-thumbnail versions of your cover images.

In that situation cover images **do** still show up in the Details Panel, but not in the Images View.

Solution:

1. Click menu *Tools / Maintenance / Repair Thumbnails*

Can I change the field value for multiple items in one go?

Yes you can by using the “Edit Multiple” feature:

[Edit Multiple Comics](#)

Move all userdata and images to a new location

If all settings are default, most comic and program data is saved in your *Documents > Comic Collector* folder. It could be that you wish to stop using the default Documents location (maybe you have a new HDD/SSD/Network location that you wish to use).

Move all data to the new Drive Location

1. Close the Comic Collector if it's open.
2. Go to your Documents folder and find your Comic Collector folder there.
3. Select this Comic Collector folder and **move it to your new drive location**.



Make sure you **move it, (not copy it)**. If you copy them, the next instructions will not work.

Fix all broken image paths

Now that you've moved all files to the new location, the image links in your Comic Collector's database are all broken.

1. Open Comic Collector and open your database (because it will not automatically open your database).
2. Use the [Tools > Maintenance > Update File Links](#) screen to fix all broken image links

Prepare Comic Collector for all the new comics you will add in the future

Now to make sure new items you add also save all their images in the correct folder, you have to perform these final steps:

1. Click on Tools > Options,
2. Click "Folders"
3. Set all those user folders that are pointing to your *Documents > Comic Collector > etc. folder* to their **new corresponding folder** inside the "Comic Collector" folder on your new drive location.



If you use an external drive location or a network drive location (like a NAS device), make sure you have set a dedicated drive letter to it.

License / Service Plan questions

- [How do I re-download the software for which I own a license?](#)
- [Can I use 1 license on more than one computer?](#)
- [How do I order as a gift?](#)
- [Do you charge extra for credit card orders?](#)
- [I am having problems ordering, please help?](#)
- [I purchased the wrong software.](#)
- [How can I get a refund?](#)

How do I re-download the software for which I own a license?

If you'd like to re-download the software you own, you can do so via your [CLZ account](#).. This page is your personal access to your licenses and download links, to activate the free CLZ Cloud, to activate Service Plans, etc.

Please select below what you'd like to do, and find the instructions on how to do it there.

I would like to redownload Comic Collector for which I own a license...

You can download your latest version of Comic Collector from your [CLZ account](#).

Login there, then find the download button for your platform and download the version you're entitled to, save it to your computer and run it.

You need your username and password to unlock the versions 16 (QuickSilver), 15 (AKA the Carbon edition) and the Cobalt desktop software (= version 12).

For older versions, use your license name and key.

I forgot my CLZ Account password...

You can request a new password on the [CLZ account](#) website.

I do not have a CLZ Account..

You can create a free CLZ account on [My.CLZ.com](#)

Can I use 1 license on more than one computer?

You can not use your license on more than one computer.

For use on multiple computers, use our web-app [Comic Connect](#).

How do I order as a gift?

When ordering just enter your own name and email address, the license key and CLZ account will be generated with your name and all information will be sent to your email address. [After ordering, simply contact us here](#) and we will manually change the license name and CLZ account to the receiver's name. Don't forget to include this name/email address in your email to us.

We can easily transfer the account to the receiver but this sends out an email to him/her. This may spoil the surprise.

If you want to wait till you have given the present, no problem, there is no expiration date on the download link. Just contact us when it's safe to transfer the account and we will update the info on file.

Note that the software gets delivered electronically only. The software is available for download inside the CLZ account.

Do you charge extra for credit card orders?

We **do not have any hidden or extra charges** if you order by credit card. That said, your card company might still charge you extra.

Collectorz.com is based in Amsterdam, the Netherlands, and some credit card companies charge additional fees for international orders. If you have any concerns we recommend that you check with your credit card company before ordering.

I am having problems ordering, please help?

Entered all details correctly?

The most common reason for not getting through with your credit card payment is that you may have mistyped a digit, mistyped or forgot to enter the safety code on the back of the card or that your card cannot be used for “foreign” or “overseas” transactions (Collectorz.com is based in Amsterdam, the Netherlands).

When you know for sure that your card is valid and that you have entered all information correctly but still your order gets rejected, you may want to contact your credit card company and ask them for the reason.

Cookies and Javascript

All payments are processed by GlobalCollect, our payment processor. Orders can only be processed if your browser allows cookies and supports Java script.

When you receive a blank page or no payment screen at all, please check the security settings of your browser to allow cookies and make sure that Java script is enabled. Security add-ons like NoScript disable Java script. Also check if your browser blocks pop ups, please allow them.

Alternatively try ordering again, using a different browser, for example Firefox, Chrome or Safari.

When you use Internet Explorer it may help to run it in compatibility mode.

We have heard of customers using Firefox that it is not compatible, retry using IE or Chrome.

Still can't get your order through?

Then please [contact us](#) and we'll assist you.

I purchased the wrong software.

If you either:

- Purchased the wrong software
- Purchased a Service Plan, but for the wrong software
- Purchased a subscription to “Connect” while you wanted an “Service Plan” for the Desktop Software,

We can likely trade your wrong purchase in for a good purchase!

Contact us to change your wrong purchase for a good purchase!

To do this, please [contact us directly via the support page](#) and we'll get you sorted out within 24 hours (and that includes weekends and holidays).

How can I get a refund?

Step 1: Ask for help if you need it.

If one of these cases applies to you:

- The software (or part of it) isn't working.
- Something is bugging me in the software.
- I don't understand how to do something in the software.
- I purchased the wrong software

Then your best bet is to contact us directly as we may be able to either fix a bug or help you get started with the software. You can [contact us directly via the support page](#) and ask us anything!

If you purchased the wrong software, please do contact us directly as we can probably “switch your purchase” to reflect the product you did want to purchase!

Step 2: That's not it, I just want a refund.

If you're unhappy with the software, we offer a 90-day money back guarantee on all software sold in our shop. No questions asked.

This includes:

- All Windows and Mac desktop software products
- Update Plans for the Windows and Mac desktop software
- Subscriptions to “Connect”

To obtain a refund we ask that you please [contact us directly via via the support page](#) and include your order ID and email address so we can find your order quickly and start the refund process for you. It usually takes somewhere from 5 to 10 business days to complete a refund.

Syncing with CLZ Cloud / Connect

- [Merge databases](#)
- [Core, Cloud and Connect explained](#)
- [Which fields are synced?](#)
- [I do not see my own cover images after syncing.](#)

Merge databases (before syncing)

CLZ Cloud can only retain 1 single database per account. **A database can contain multiple sub collections**, so the solution is to merge your databases into 1 file, separated inside as multiple sub-collections.

The steps to do this:

1. Open database file 1.
2. Click **File > Import from > Other database**
3. Select database file 2.
4. You will get a popup asking you if you wish to import the database as a separate collection (you probably want this).
5. Repeat for databases file 3 and 4 and so on

After merging, you can sync this DB with CLZ Cloud.

Core, Cloud and Connect explained

What is Core?

Core is the central online database with *our* item data and cover images

In other words, Core is the source of the automatic data and images you get when using the Add Automatically feature in any of our cataloging solutions.

The desktop versions have various Report to Core features for letting us know about missing entries and for reporting and submitting data errors.

What is the CLZ Cloud?

The CLZ Cloud is the cloud storage and syncing system for *your* collection data

The CLZ Cloud is available for FREE for everyone. To start using it, just login to your account at my.clz.com and click the green “Activate” button.

The CLZ Cloud can be used for:

- **Syncing your data between devices**
E.g. to get your collection data from the desktop to your mobile app.
- *Backing up your collection data online *
Just sync up once in while and you’ll always have a backup in case of local database problems.
- *Publishing your collection list online (optional) *
Your cloud data can optionally be made visible on the cloud.collectorz.com site for online browsing.
[Browse our demo online movie collection here.](#)
(You can control your “Cloud visibility” from your [account at my.clz.com](https://account.at.my.clz.com).)

*6-month “keep-alive” policy: *

Usage of the CLZ Cloud is free and for as long as you want. That is, if you actually use it. For performance reasons, we’re using a 6-month “keep-alive” policy. Which basically means that if you sync or login at least once every 6 months, we will keep your data online. After 6 months of inactivity, your data will be removed.

What is Connect?

Connect is our online cataloging software

With Connect, you can manage your collection online, using just your web-browser. It has the familiar look of your public CLZ Cloud pages, but with full adding and editing capabilities.

The benefits of using Connect:

- The Connect software can be used by just logging in to the Connect website.
- No need to download or install software on your computer or mobile device.
- Updates are fully automatic and included in the subscription fees.
- Your data is stored in the CLZ Cloud. Automatically daily backups too.

Connect can be used in two ways:

1. **Stand-alone:** Connect can be a fully stand-alone alternative to using the desktop software or the mobile apps (we have thousand of users who only use Connect!).
2. **As an add-on:** Connect is also perfect companion software to your desktop or mobile edition, that can be used to directly edit your CLZ Cloud data, from anywhere, any computer or mobile device.

Wanna give Connect a try? Great, here's how:

- [Go to the Connect site here](#)
- Choose the app you want (Music, Movie, Book, Comic or Game Connect).
- Click the Login button top right and login with your existing CLZ Account.
- Click the Free Trial button to activate your 30-day trial period.
(After the 30 days, your trial subscription will automatically revert back to the free CLZ Cloud level.)



So to summarize...

1. Core is **our** online data.
2. CLZ Cloud is **your** online data.
3. Connect is online **software**.

Which fields are synced?

When you sync with the CLZ Cloud, the program will only sync a CLZ Comic ID, CLZ Series ID, and some predefined fields.

For the rest of the data you see in CLZ Cloud it's using data from our Core for Comics online database based on the CLZ Comic ID, such as characters and creators. We call these "central fields". (The CLZ Comic ID is obtained when you "Add Comics Automatically" and select a result to be added to your collection OR when you "Link" an comic entry to our Core for Comics online database).

The idea is that all factual data for a comic is the same for all users (because these are "facts"), so that is why the CLZ Cloud does not store this information repeatedly for all users. It just "shares" this data from the Core for Comics online database.

Predefined fields

The fields below are completely user editable, and whatever you put in them is synced to your CLZ Cloud:

- Series
- Series Sort Title
- Issue No.
- Issue Ext.
- Title
- Series Group

- Edition
- Crossover
- Story Arc
- Imprint
- Age
- Cover Price
- Cover Date

- Publisher
- Publication Date
- Barcode
- Format

- Index
- Collection Status
- Owner
- Quantity
- Location
- Rating

- Read it: Yes/No
- Read it: Date
- Purchase Date
- Condition
- Purchase Price
- Current Value
- Store
- Tags
- Notes
- Loan information

I do not see my own cover images after syncing.

When you sync with CLZ Cloud, the cloud entries will, in general, use the central cover images from *Core for Comics*. Only if you've manually modified or added a cover yourself it will be marked as Custom Image and syncs with your CLZ Cloud.

Sync Custom Images

Custom Images sync with CLZ Cloud. A front cover image is marked as "Custom Image" automatically when you:

- Use the "Find Cover" screen
- Browse for a new front cover on your computer
- Drag and drop a new front cover on your comic
- Acquire a new front cover using your image scanner

Marking images as "Custom Image"

Marking images as "Custom Image" is done automatically by Comic Collector V19 and up.

If you find that you have some custom images that aren't syncing with CLZ Cloud, you can mark them as "Custom Image" yourself:

1. Edit the comic and go to the covers tab
2. Check the box for "Custom Image"

That's all, the custom image will now be synced the next time you sync with CLZ Cloud.



You can use Tools > Maintenance > Auto Mark Custom Images to check your entire collection for custom images, you only have to do this once. This feature is not available on Music Collector.

To sync your own cover with older versions (pre-v19) of Comic Collector you have to right click the comic and select "Upload Cover".

Force upload a cover with the mobile app

In the mobile app you can force upload your cover by editing the comic and then tap the checkbox for "Custom Image", and then sync.