

# CT RELEASE NOTE



# Release Note

2023.12 — Last update: Dec 11, 2023

Suresofttech

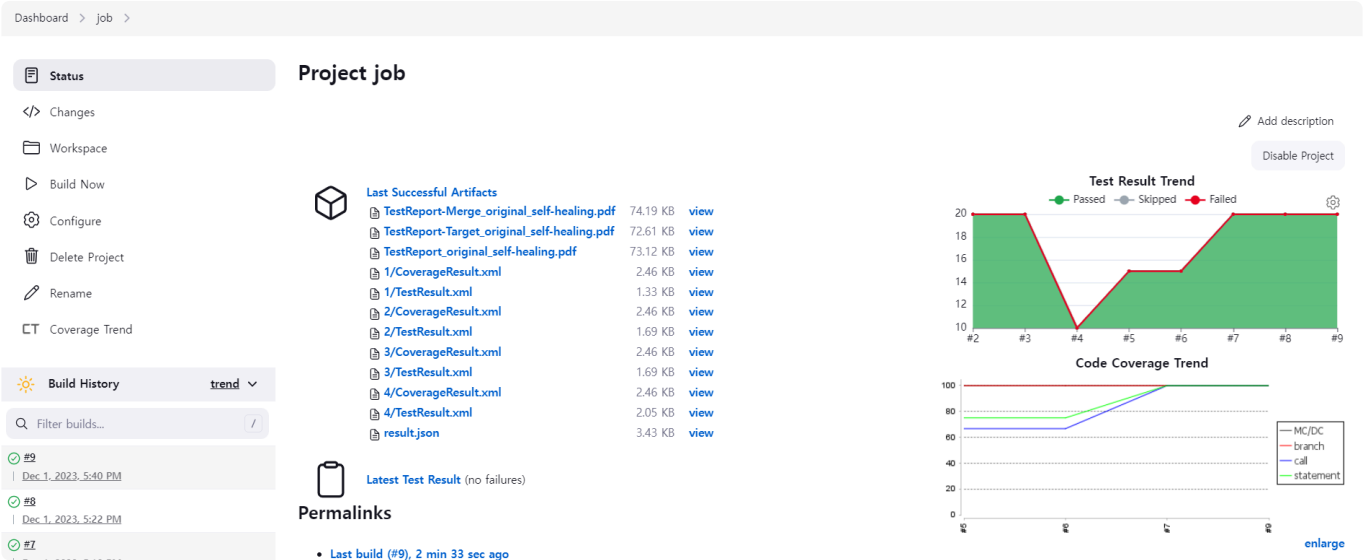
# Table of Contents

- 1. Added Features ..... 4
- 2. Improvements ..... 6
- 3. Bug Fixed ..... 8

# 1. Added Features

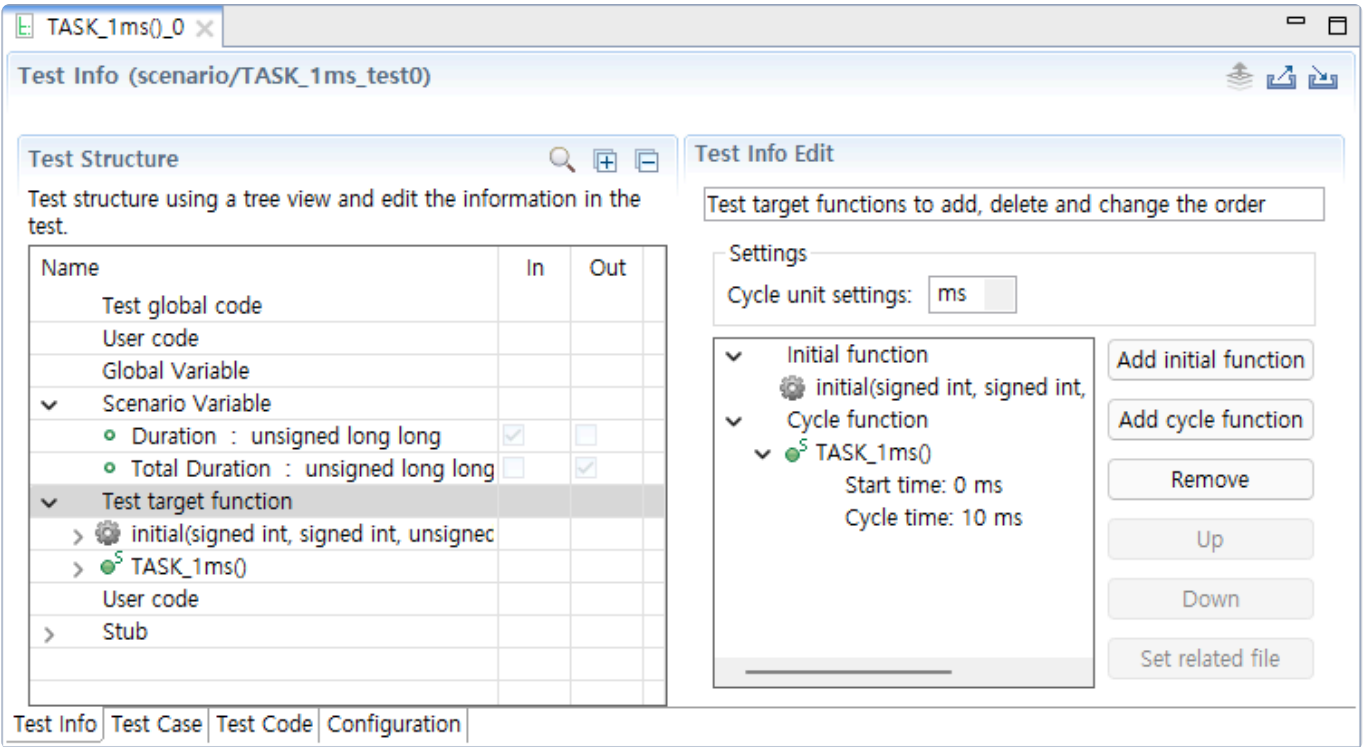
## CT Jenkins plugin

CT 2023.12 provides the CT Jenkins plugin that enables continuous integration and continuous deployment (CI/CD) for the CT 2023.12 project. With CT Jenkins plugin, you can check coverage results, test reports, and the outcomes of self-healing.



## Scenario Testing

CT 2023.12 provides scenario testing feature to test functions that are periodically invoked.

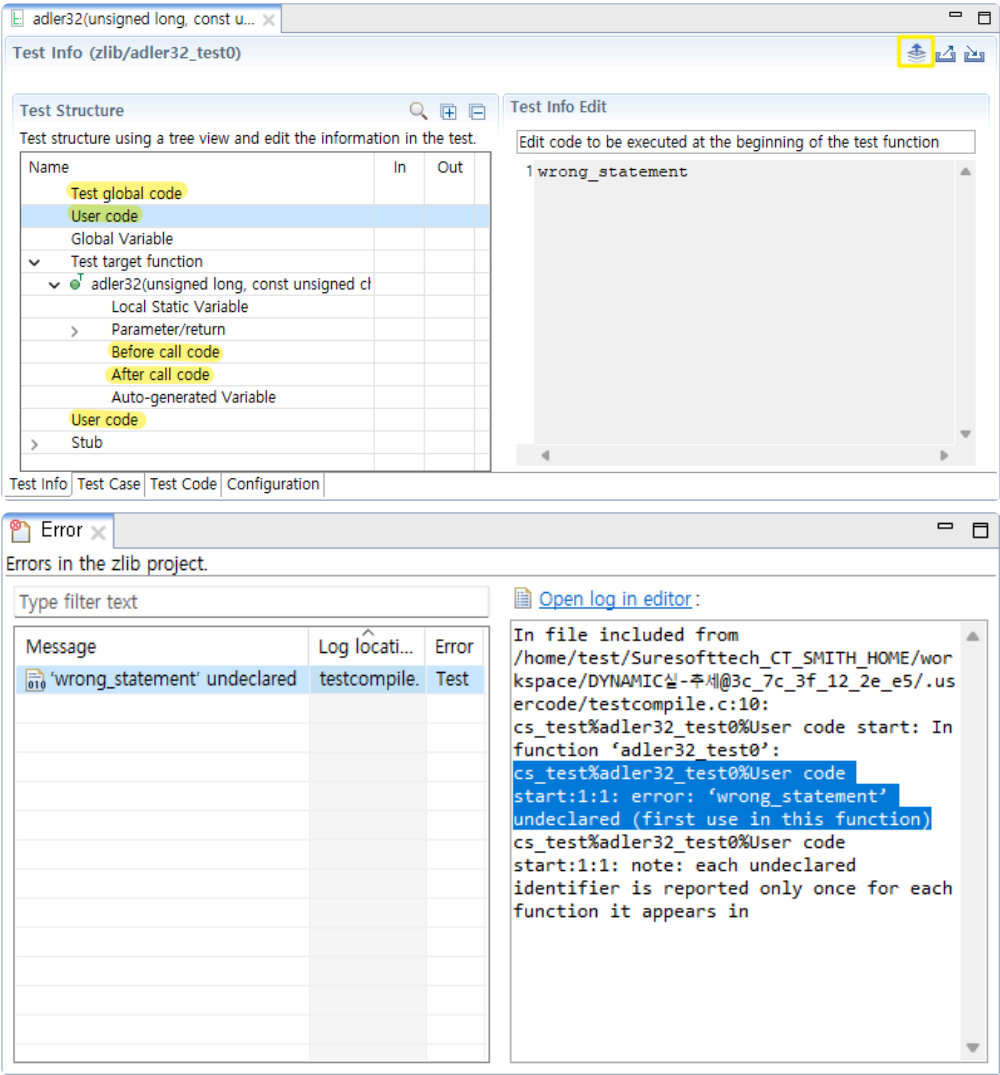


# New Toolchains

GCC 11 and GCC 12 toolchains have been added to the list of supported toolchains. You can add GCC 11 and GCC 12 toolchains using the [Add Toolchain] feature on the toolchain preference.

# Test Compile

For the RTV project, CT 2023.12 provides a test compile feature that allows users to check for errors in code related to tests before executing the tests.



## 2. Improvements

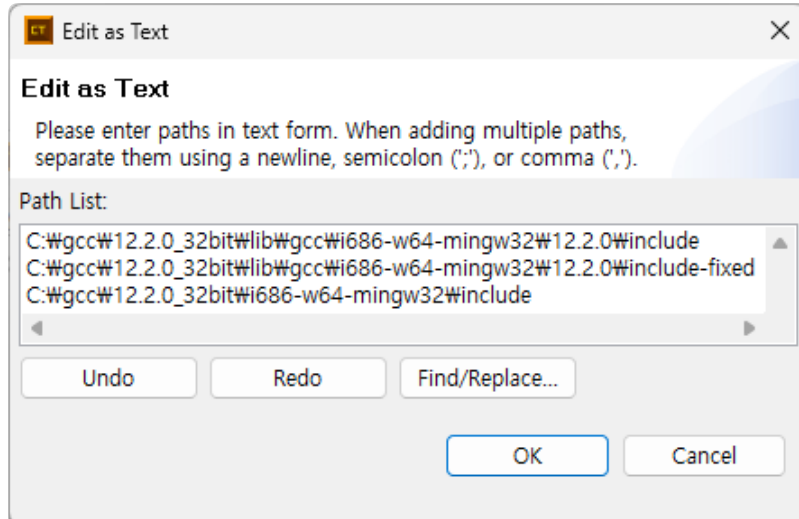
---

### Test Creation

When creating tests, some additional variables that can assist in test have been added.

### Edit as Text

Improvements have been made to edit paths as text for easier editing.



### Report

- It's now possible to generate reports including project information.
- Reports for each test now include test repetition counts and the targeted functions for testing.

### CLI

- Automated extraction of toolchains has been improved.
- When generating test reports, target/merge reports are now also created.
- Features related to team projects have been added.
- An `include_project_info` option has been added to generate reports including project information.

### Connect Isolation Stubs to Target Stubs

When creating tests, selecting isolation stub creation will connect it to the host stub. You can select [Connect Target Stub] to connect it to the target stub.

### RTV Log

When collecting project logs, improvement have been made to collect RTV logs as well.

## Icon and Logo Change

Both the icon and logo have been updated.

- New icon



- New logo



## 3. Bug Fixed

---

- Fixed issue where tests for `std::nullptr_t` type parameter were not being generated.
- Fixed issue with missing input values of double-pointer string type during exporting test data.
- Changed English title for individual test reports in integration testing.
- Fixed issue where const functions among overloaded functions showed 0% coverage.
- Modified to consider toolchain directories of previous versions during import toolchain.
- Fixed issue where fail in pilot testing when using mock objects.
- Fixed issue causing broken requirement connections during project import.
- Fixed inconsistency in TU (Translation Unit) of class code between clients in team testing.
- Fixed issue where user stubs for template functions were not working correctly.
- Fixed issue with CLI not working when DISCOVERY license is deactivated.
- Modified that can create RTV project even when the path exceeds 260 characters.
- Fixed issue where stub reports were not generated after stub deletion.
- Fixed issue where before/after call code was not retained during test reconfiguration.
- Updated team projects to be convertible to regular projects even when not connected to the server.
- Added function coverage to the summary information in integration test reports.