

ActiveDiscover - Release Notes

1.20 — Last update: 10 January 2024

Basis Technologies

Table of Contents

- 1. Introduction 3
- 2. SAP Certification 4
- 3. Features & Enhancements 5
- 4. Bug Fixes 10

1. Introduction

ActiveDiscover 1.20 was released in December 2023.

Previous releases of ActiveDiscover are detailed in separate Release Notes.

- [ActiveDiscover 1.10](#) (*released September 2023*)

Each ActiveDiscover version is currently supported by Basis Technologies until 2 new versions ($n + 2$ concept) are made available. For example, ActiveDiscover 1.20 will be out of maintenance once ActiveDiscover 1.30 and ActiveDiscover 1.40 are released. The anticipated duration between the current ActiveDiscover version and the release of 2 new ActiveDiscover versions is between 6 to 12 months. Please refer to the [Product Maintenance](#) document for details of out of support versions.

2. SAP Certification

ActiveDiscover is an SAP certified solution with the following certifications.

- Certified for deployment on SAP S/4HANA Cloud, private edition, release 2022 via the SAP integration scenario Add-On Deployment for RISE with SAP (Report number #21443).
- Certified for deployment on SAP NetWeaver 7.50 via the SAP integration scenario Add-On Deployment for SAP NetWeaver (Report number #21444).
- Compatible with SAP S/4HANA.
- Compatible with SAP S/4HANA Cloud, private edition.
- Works with RISE with SAP.
- Integration with SAP NetWeaver 7.50.
- SAP Solution Manager Ready functionality.

All ActiveDiscover SAP components exist within Basis Technologies' own '/BTI/' namespace. Some other Basis Technologies' products that are used in conjunction with ActiveDiscover exist within a separate '/BTR/' namespace.

3. Features & Enhancements

ActiveControl integration

ActiveDiscover 1.20 enables ActiveControl 9.20 to display impact score information for projects, business tasks and transports.

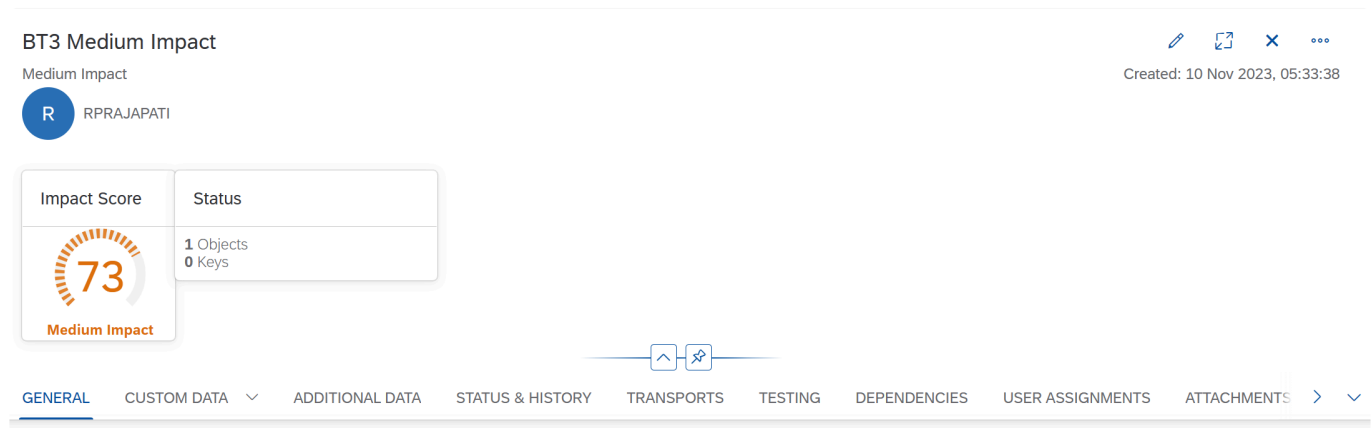


Figure AD-01a: ActiveDiscover impact assessment score in ActiveControl Business Task as a Gauge chart

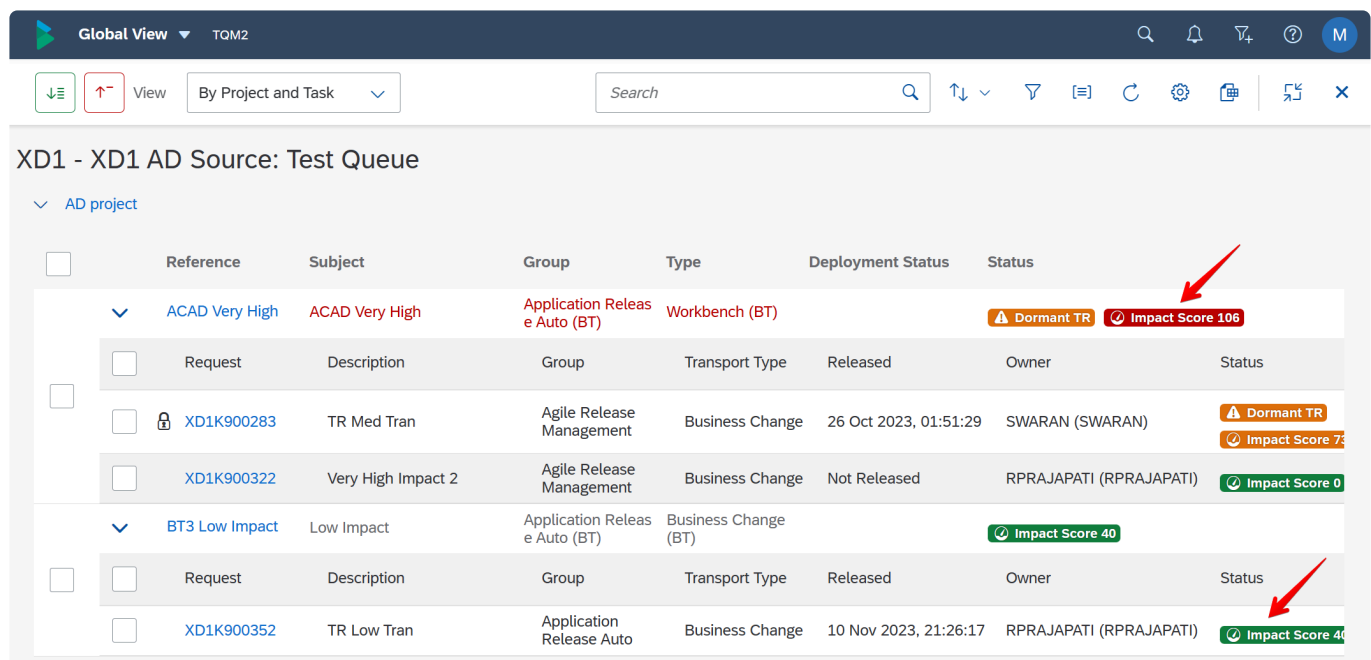


Figure AD-01b: ActiveDiscover impact assessment score in ActiveControl Global View as a RAG status

Application area impact details

The dashboard card for impact on application areas now includes a "View Details" button which takes the user to a dedicated page that displays all impacted application areas along with a Sankey diagram that shows the hierarchy of impacted areas, weighted either by number of objects, or by impact score.

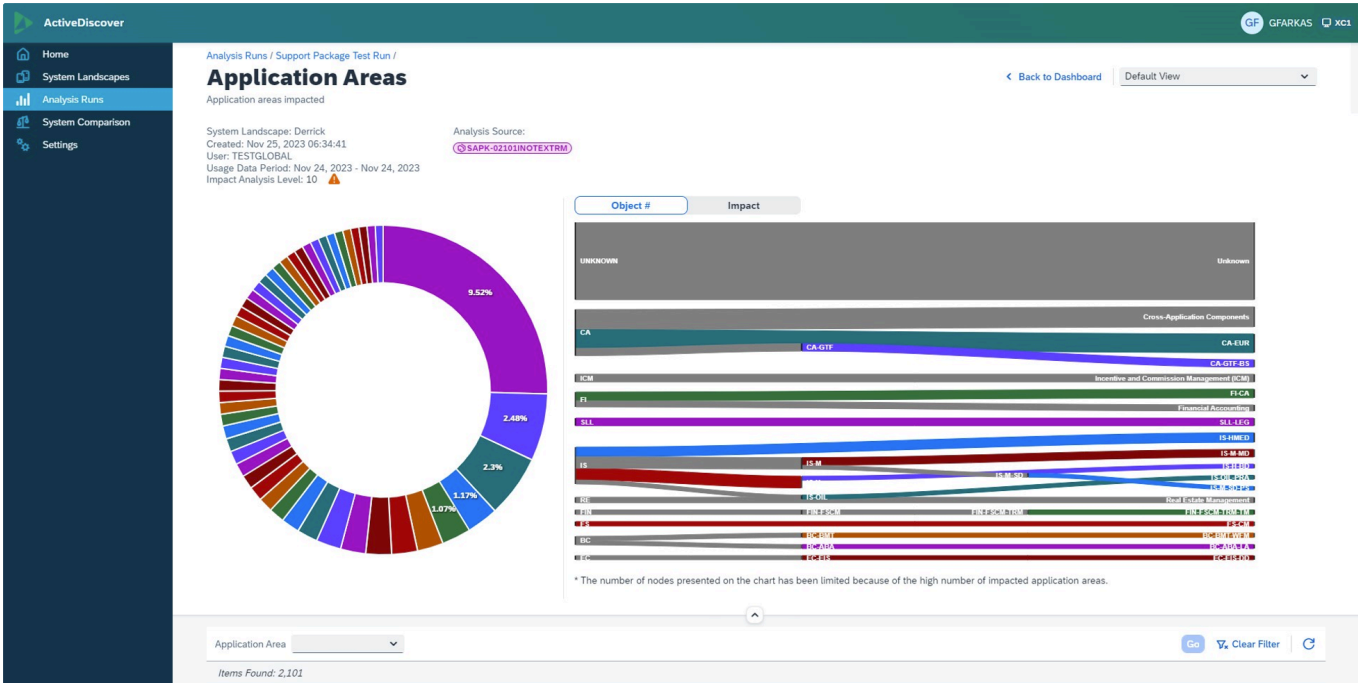


Figure AD-02: Application area impact details

Interface diagram for external systems

The detail page for impact on external systems now features an interface diagram that visualizes the connections between the impacted remote function modules and the external systems calling them.

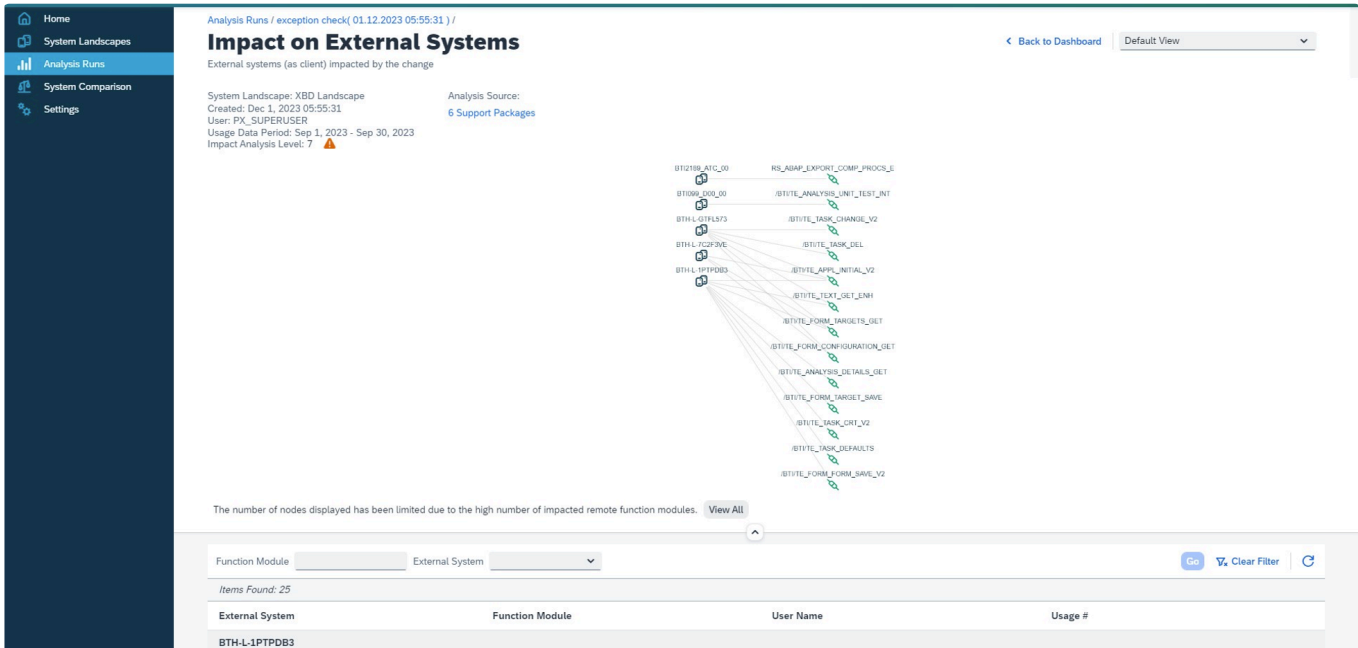


Figure AD-03: Interface diagram for external systems

Parallel processing

Both the object relationship analysis and the object comparison now leverage parallel processing, resulting in significant performance improvements.

Additionally, parameters related to parallel processing (number of background processes to be used, size of interval used to divide the work into units) are now exposed in the Settings / Advanced Settings section.

The number of background jobs can also be modified while the analysis is running by clicking on the cog icon next to the analysis progress bar in the “Active Analysis Runs” section.

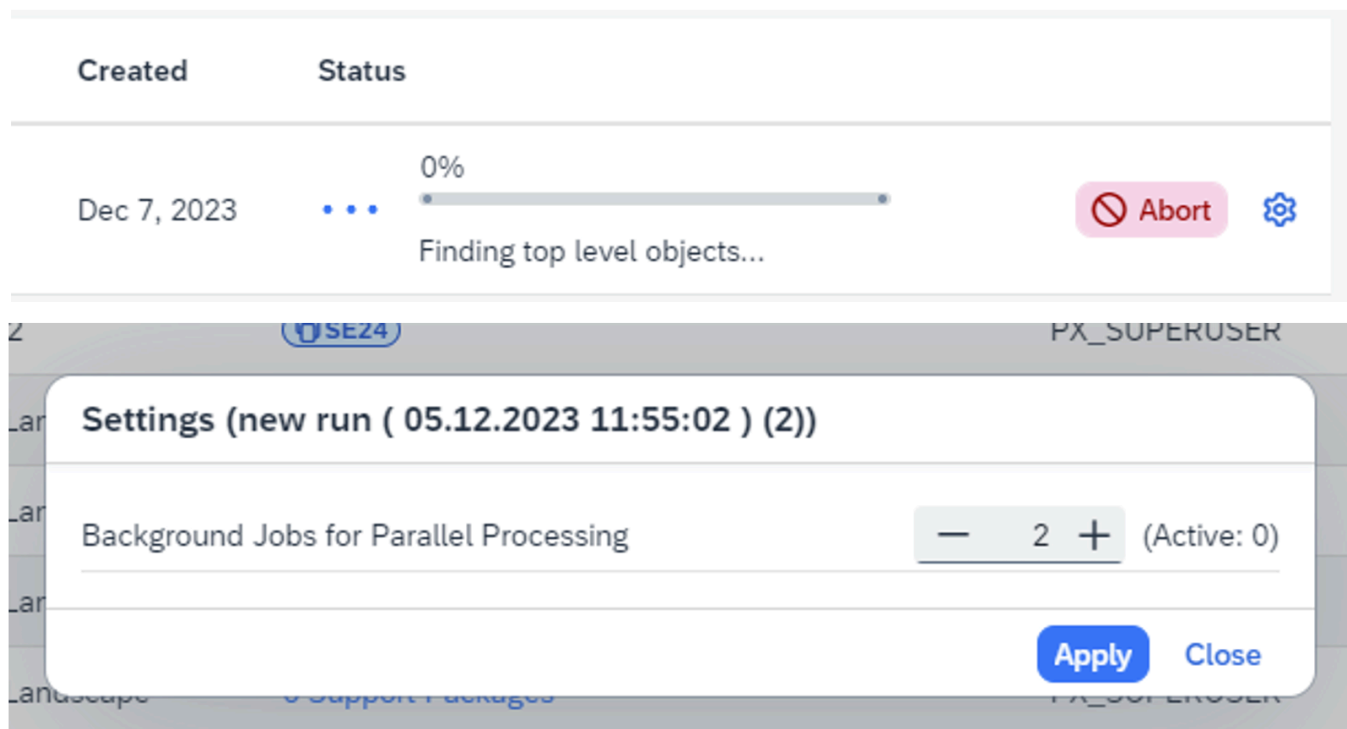


Figure AD-04: Parallel processing

Configurable criticality levels for critical objects

In the landscape configuration, when adding critical objects, the criticality can now be fine-tuned via setting it to “Low”, “Medium”, or “High”, which assign different minimum impact scores for the object.

List of Critical Objects		
Add Item to the List		
SAP GUI Transaction ▼	Object Name	+ Add Object Find Object
Type	Name	Priority
Class (ABAP Objects)	/BTI/TE_CL_RE_AUTASGMT_TESTERS	Low Medium High
Class (ABAP Objects)	/BTI/TE_CL_TESTSCRIPT_BASE	Low Medium High
Class (ABAP Objects)	/BTI/TE_CL_TESTSCRIPT_EXCEL	Low Medium High

Figure AD-05: Configurable criticality levels for critical objects

Display source objects for impacted top level objects

On the detailed page for impacted top level objects, next to the object relationship icon, there is now a new option that can be used to display all source objects for an impacted object as a simple list.




Items Found: 8,356		
Type	Object Name	Application Area
Transaction	 SE24  	Class Builder

Figure AD-06: Display source objects for impacted top level objects

Default value for analysis name when re-running an analysis

When re-running (copying) a completed analysis, the name of the copied analysis now defaults to a sensible value based on the original name, instead of an empty name.

System comparison dashboard

The results of a system comparison run are now displayed as a dashboard which summarizes the key information about the objects that have been analysed, and the differences that have been found.

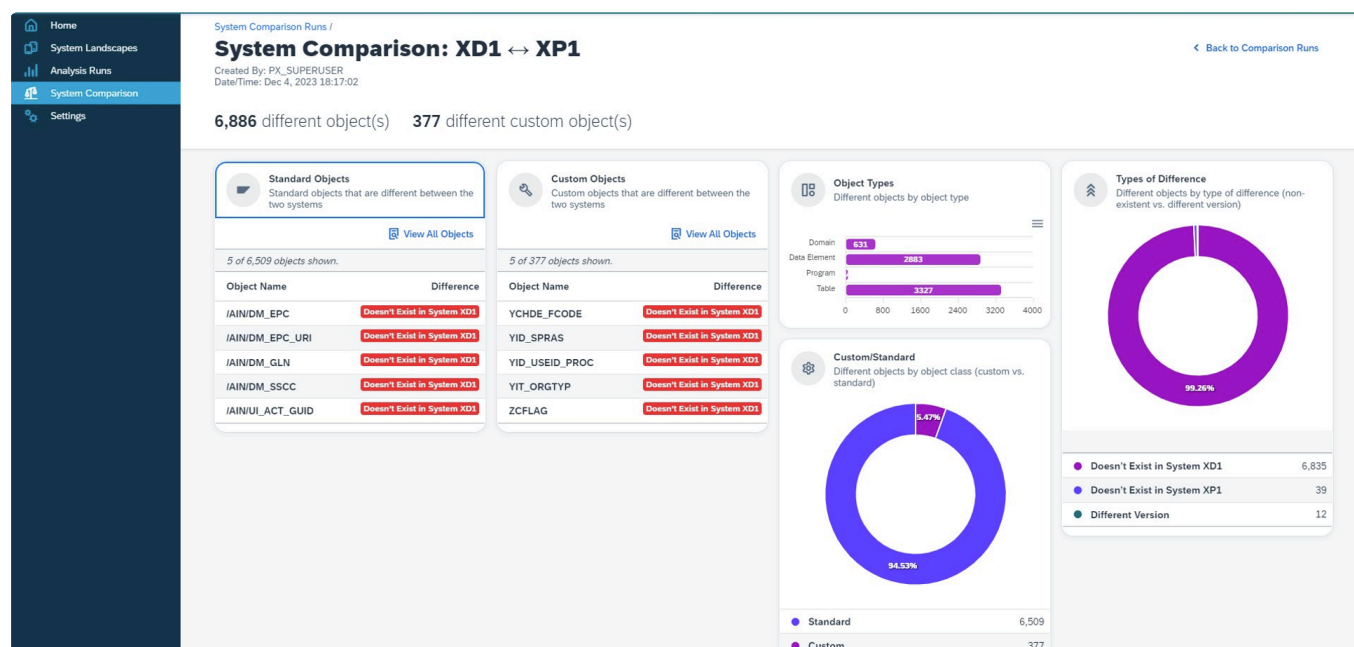


Figure AD-07: System comparison dashboard

Display all analysis settings (for audit purposes)

Now it is possible to review all settings that were used to run a particular analysis, including which analysis components were turned on, the list of critical objects and top-level object types, custom

weights, and the Failure Prediction customization.

This can be opened from the analysis dashboard by clicking on More / View Analysis Settings. (The option is not available for pre-1.2 analysis runs.)

Improvements for UI5 application analysis

Impacted UI5 applications have now been incorporated into the metric Impact on Active Users and are featured on the analysis dashboard summary.

4. Bug Fixes

The following bugs have been addressed in ActiveDiscover 1.20.

- Memory exceeded during Failure Prediction phase of analysis run.
- Loading UI is showing infinitely on Predicted Failures screen while user changes the view mode.
- Cannot return from detailed message view in Predicted Failures message dialog.
- Out of memory issue with object relationship data when collating intervals.
- Empty user group is not handled properly on the Impact on Active Users page.
- Customizing changes are not picked up by the analysis.
- Various problems with the RFC selection dialog when adding a new system to a landscape.